



Lugs and Connectors

Scotchlok 10000 and 11000 Series Connectors, and 30000 and 31000 Series Lugs

85


Scotchlok™ Lugs and Connectors are crimp connectors for power cable conductors. These connectors are used when splicing and terminating power cable.

Scotchlok 10000 and 11000 Series Connectors, and 30000 and 31000 Series Lugs

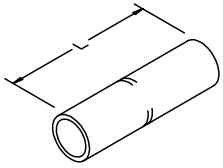
The Scotchlok 10000 and 11000 Series Connectors and the 30000 and 31000 Series Lugs are only used on copper conductors. They are available in standard or long barrel designs and are constructed of one-piece, seamless, high-conductivity tin plated copper. (UL Listed for up to 600 volt applications).



7

 Features — Benefits	
Scotchlok Lugs and Connectors	
Simple installation using readily available tools	UL Listed for use with a variety of manufacturers' tools
Entrance chambers	Facilitate cable insertion

Specifications and Ordering Information for Scotchlok™ 10000 Series Copper Connectors — Standard-Barrel up to 35kV



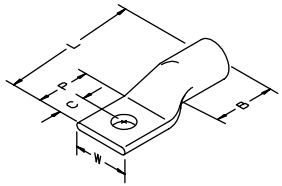
Product Number	UPC (054007-)	Color Code	Wire Size	Dimensions			Case Qty.
				I.D.	O.D.	L	
10001	12717	Blue	6 AWG	0.196" (5,0 mm)	0.290" (7,3 mm)	1.750" (44,4 mm)	50 each
10002	12725	Gray	4 AWG	0.247" (6,2 mm)	0.340" (8,6 mm)	1.750" (44,4 mm)	50 each
10003	12733	Brown	2 AWG	0.307" (7,8 mm)	0.416" (10,6 mm)	1.880" (47,6 mm)	25 each
10004	12758	Green	1 AWG	0.358" (9,1 mm)	0.462" (11,7 mm)	1.880" (47,6 mm)	10 each
10005	12766	Pink	1/0 AWG	0.394" (10,0 mm)	0.512" (13,0 mm)	1.880" (47,6 mm)	10 each
10006	12774	Black	2/0 AWG	0.439" (11,2 mm)	0.560" (14,2 mm)	2.000" (50,8 mm)	10 each
10007	12790	Orange	3/0 AWG	0.490" (12,4 mm)	0.617" (15,7 mm)	2.130" (54,0 mm)	10 each
10008	12816	Purple	4/0 AWG	0.548" (13,9 mm)	0.687" (17,4 mm)	2.130" (54,0 mm)	10 each
10009	12832	Yellow	250 kcmil	0.595" (15,1 mm)	0.750" (19,1 mm)	2.250" (57,2 mm)	3 each
10010	12857	White	300 kcmil (150 mm ²)	0.650" (16,5 mm)	0.813" (20,7 mm)	2.250" (57,2 mm)	3 each
10011	12873	Red	350 kcmil	0.700" (17,8 mm)	0.875" (22,2 mm)	2.380" (60,4 mm)	3 each
10014	12899	Brown	500 kcmil	0.836" (21,2 mm)	1.060" (27,0 mm)	2.880" (73,0 mm)	3 each
10019	12915	—	750 kcmil	1.031" (26,2 mm)	1.299" (33,0 mm)	3.380" (85,8 mm)	3 each
10024	12931	—	1000 kcmil (500 mm ²)	1.173" (29,8 mm)	1.500" (38,1 mm)	3.880" (98,4 mm)	3 each

Specifications and Ordering Information for Scotchlok 11000 Series Copper Connectors — Long-Barrel up to 35kV



Product Number	UPC (054007-)	Color Code	Wire Size	Dimensions			Case Qty.
				I.D.	O.D.	L	
11006	12782	Black	2/0 AWG	0.439" (11,2 mm)	0.560" (14,2 mm)	3.130" (79,4 mm)	10 each
11007	12808	Orange	3/0 AWG	0.490" (12,4 mm)	0.617" (15,7 mm)	3.130" (79,4 mm)	10 each
11008	12824	Purple	4/0 AWG	0.548" (13,9 mm)	0.687" (17,4 mm)	3.380" (85,8 mm)	10 each
11009	12840	Yellow	250 kcmil	0.595" (15,1 mm)	0.750" (19,1 mm)	3.380" (85,8 mm)	3 each
11010	12865	White	300 kcmil (150 mm ²)	0.650" (16,5 mm)	0.813" (20,7 mm)	4.130" (104,8 mm)	3 each
11011	12881	Red	350 kcmil	0.700" (17,8 mm)	0.875" (22,2 mm)	4.130" (104,8 mm)	3 each
11014	12907	Brown	500 kcmil	0.836" (21,2 mm)	1.060" (27,0 mm)	4.630" (117,5 mm)	3 each
11019	12923	—	750 kcmil	1.031" (26,2 mm)	1.299" (33,0 mm)	5.880" (149,2 mm)	3 each
11024	12949	—	1000 kcmil (500 mm ²)	1.173" (29,8 mm)	1.500" (38,1 mm)	6.130" (155,6 mm)	3 each

Specification and Ordering Information for Scotchlok™ 30000 Series Copper Lugs — One Hole up to 35kV



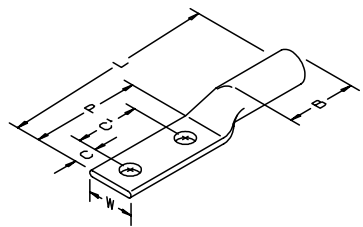
Product Number	UPC (054007-)	Color Code	Standard Wire Size	Stud Size	Dimensions						Case Qty.
					I.D.	L	B	W	P	C	
30014	12410	Blue	6 AWG	10" (5 mm)	0.196" (5,0 mm)	1.780" (45,2 mm)	0.750" (19,1 mm)	0.500" (12,7 mm)	0.750" (19,1 mm)	0.375" (9,5 mm)	50 each
30015	12428	Blue	6 AWG	1/4" (6 mm)	0.196" (5,0 mm)	1.780" (45,2 mm)	0.750" (19,1 mm)	0.500" (12,7 mm)	0.750" (19,1 mm)	0.375" (9,5 mm)	50 each
30016	12436	Blue	6 AWG	5/16" (8 mm)	0.196" (5,0 mm)	1.780" (45,2 mm)	0.750" (19,1 mm)	0.435" (11,0 mm)	0.750" (19,1 mm)	0.375" (9,5 mm)	50 each
30018	12444	Gray	4 AWG	10" (5 mm)	0.247" (6,3 mm)	1.940" (49,3 mm)	0.750" (19,1 mm)	0.485" (12,3 mm)	0.890" (22,6 mm)	0.375" (9,5 mm)	50 each
30019	12451	Gray	4 AWG	1/4" (6 mm)	0.247" (6,3 mm)	1.940" (49,3 mm)	0.750" (19,1 mm)	0.485" (12,3 mm)	0.890" (22,6 mm)	0.375" (9,5 mm)	50 each
30021	12469	Gray	4 AWG	3/8" (10 mm)	0.247" (6,3 mm)	1.940" (49,3 mm)	0.750" (19,1 mm)	0.590" (15,1 mm)	0.890" (22,6 mm)	0.375" (9,5 mm)	50 each
30022	12477	Brown	2 AWG	1/4" (6 mm)	0.307" (7,8 mm)	1.970" (50,0 mm)	0.810" (20,7 mm)	0.630" (15,9 mm)	0.890" (22,6 mm)	0.375" (9,5 mm)	25 each
30023	12485	Brown	2 AWG	5/16" (8 mm)	0.307" (7,8 mm)	1.970" (50,0 mm)	0.810" (20,7 mm)	0.630" (15,9 mm)	0.890" (22,6 mm)	0.375" (9,5 mm)	25 each
30024	12493	Brown	2 AWG	3/8" (10 mm)	0.307" (7,8 mm)	1.970" (50,0 mm)	0.810" (20,7 mm)	0.630" (15,9 mm)	0.890" (22,6 mm)	0.375" (9,5 mm)	25 each
30027	12501	Green	1 AWG	5/16" (8 mm)	0.358" (9,1 mm)	1.970" (50,0 mm)	0.810" (20,7 mm)	0.690" (17,4 mm)	0.750" (19,1 mm)	0.375" (9,5 mm)	10 each
30028	12519	Green	1 AWG	3/8" (10 mm)	0.358" (9,1 mm)	1.970" (50,0 mm)	0.810" (20,7 mm)	0.690" (17,4 mm)	0.750" (19,1 mm)	0.375" (9,5 mm)	10 each
30031	12527	Pink	1/0 AWG	5/16" (8 mm)	0.394" (10,0 mm)	2.160" (54,8 mm)	0.810" (20,7 mm)	0.750" (19,0 mm)	0.890" (22,6 mm)	0.375" (9,5 mm)	10 each
30032	12535	Pink	1/0 AWG	3/8" (10 mm)	0.394" (10,0 mm)	2.160" (54,8 mm)	0.810" (20,7 mm)	0.750" (19,0 mm)	0.890" (22,6 mm)	0.375" (9,5 mm)	10 each
30036	12543	Black	2/0 AWG	3/8" (10 mm)	0.439" (11,2 mm)	2.370" (60,2 mm)	0.870" (22,2 mm)	0.810" (20,7 mm)	1.110" (28,2 mm)	0.375" (9,5 mm)	10 each
30041	12568	Orange	3/0 AWG	1/2" (12 mm)	0.490" (12,4 mm)	2.630" (66,8 mm)	0.940" (23,8 mm)	0.910" (23,0 mm)	1.110" (28,2 mm)	0.531" (13,5 mm)	10 each
30045	12584	Purple	4/0 AWG	1/2" (12 mm)	0.548" (13,9 mm)	2.600" (65,9 mm)	0.970" (24,6 mm)	1.000" (25,4 mm)	1.110" (28,2 mm)	0.531" (13,5 mm)	10 each

Specifications and Ordering Information for Scotchlok™ 31000 Series Copper Lugs —
One Hole, Long-Barrel up to 35kV



Product Number	UPC (054007-)	Color Code	Standard Wire Size	Stud Size	Dimensions						Case Qty.
					I.D.	L	B	W	P	C	
31036	12550	Black	2/0 AWG	3/8" (72,2 mm)	0.439" (10 mm)	2.840" (11,2 mm)	1.440" (72,2 mm)	0.812" (36,5 mm)	0.890" (20,6 mm)	0.375" (22,6 mm)	10 each
31041	12576	Orange	3/0 AWG	1/2" (12 mm)	0.490" (12,4 mm)	3.130" (79,5 mm)	1.440" (36,5 mm)	0.910" (23,0 mm)	1.110" (28,2 mm)	0.531" (13,5 mm)	10 each
31045	12592	Purple	4/0 AWG	1/2" (12 mm)	0.548" (13,9 mm)	3.320" (84,4mm)	1.560" (39,7 mm)	1.000" (25,4 mm)	1.110" (28,2 mm)	0.531" (13,5 mm)	10 each
31049	12618	Yellow	250 kcmil	1/2" (12 mm)	0.590" (15,1 mm)	3.380" (85,8 mm)	1.500" (38,0 mm)	1.130" (28,6 mm)	1.110" (28,2 mm)	0.531" (13,5 mm)	10 each
31053	12634	White	300 kcmil (150 mm²)	1/2" (12 mm)	0.650" (16,5 mm)	3.780" (96,0 mm)	1.940" (49,2 mm)	1.220" (30,9 mm)	1.110" (28,2 mm)	0.531" (13,5 mm)	10 each
31056	12659	Red	350 kcmil	1/2" (12 mm)	0.700" (17,8 mm)	3.840" (97,5 mm)	1.940" (49,2 mm)	1.270" (32,3 mm)	1.110" (28,2 mm)	0.531" (13,5 mm)	10 each
31060	11978	Blue	400 kcmil	1/2" (12 mm)	0.762" (19,3 mm)	4.160" (105,7 mm)	2.000" (50,8 mm)	1.410" (35,8 mm)	1.340" (34,2 mm)	0.650" (16,66 mm)	10 each
31066	12675	Brown	500 kcmil	1/2" (12 mm)	0.836" (21,2 mm)	4.500" (114,3 m)	2.190" (55,6 mm)	1.530" (38,9 mm)	1.340" (34,2 mm)	0.660" (16,8 mm)	10 each
31067	12683	Brown	500 kcmil	5/8" (16 mm)	0.836" (21,2 mm)	4.500" (114,3 mm)	2.190" (55,6 mm)	1.530" (38,9 mm)	1.340" (34,2 mm)	0.660" (16,8 mm)	10 each
31068	11980	Green	600 kcmil	1/2" (12 mm)	0.920" (23,4 mm)	5.120" (130,0 mm)	2.690" (68,2 mm)	1.690" (42,9 mm)	1.750" (44,4 mm)	0.870" (22,2 mm)	6 each

Specifications and Ordering Information for Scotchlok 31000 Series Copper Lugs —
Two Hole, Long-Barrel up to 35kV



Product Number	UPC (054007-)	Color Code	Wire Size	Stud Size	Dimensions							Case Qty.
					I.D.	L	B	W	P	C	C'	
31145	12600	Purple	4/0 AWG	1/2" (12 mm)	0.548" (13,9 mm)	5.160" (131,0mm)	1.560" (44,4mm)	1.000" (39,7 mm)	3.000" (25,4 mm)	0.630" (76,2 mm)	1.750" (15,9 mm)	10 each
31149	12626	Yellow	250 kcmil	1/2" (12 mm)	0.595" (15,1 mm)	5.310" (134,9 mm)	1.560" (39,7 mm)	1.130" (28,6 mm)	3.000" (76,2 mm)	0.630" (15,9 mm)	1.750" (44,4mm)	10 each
31153	12642	White	300 kcmil (150 mm²)	1/2" (12 mm)	0.650" (16,5mm)	5.750" (146,0mm)	1.940" (49,2 mm)	1.220" (31,0 mm)	3.000" (76,2 mm)	0.630" (15,9 mm)	1.750" (44,4 mm)	10 each
31156	12667	Red	350 kcmil	1/2" (12 mm)	0.700" (17,8 mm)	5.750" (146,0 mm)	1.940" (49,2 mm)	1.310" (33,4 mm)	3.000" (76,2 mm)	0.630" (15,9 mm)	1.750" (44,4 mm)	10 each
31160	11979	Blue	400 kcmil	1/2" (12 mm)	0.762" (19,35 mm)	6.000" (152,4 mm)	2.120" (59,8 mm)	1.410" (35,8 mm)	3.090" (78,5 mm)	0.620" (15,7 mm)	1.750" (44,4 mm)	10 each
31166	12691	Brown	500 kcmil	1/2" (12 mm)	0.836" (21,2 mm)	6.160" (156,4 mm)	2.190" (55,6 mm)	1.530" (38,9 mm)	3.000" (76,2 mm)	0.630" (15,9 mm)	1.750" (44,4 mm)	10 each
31168	11981	Green	600 kcmil	1/2" (12 mm)	0.923" (23,44 mm)	6.720" (170,6 mm)	2.620" (66,5 mm)	1.690" (42,9 mm)	3.120" (79,2 mm)	0.620" (15,7 mm)	1.750" (44,4 mm)	6 each
31172	12709	Black	750 kcmil	1/2" (12 mm)	1.031" (26,2 mm)	7.000" (177,8 mm)	2.810" (71,5 mm)	1.720" (43,7 mm)	3.000" (76,2 mm)	0.630" (15,9 mm)	1.750" (44,4 mm)	6 each
31178	00907	—	1000 kcmil (500 mm²)	1/2" (12 mm)	1.173" (29,3 mm)	7.280" (184,9 mm)	2.940" (74,6 mm)	1.720" (43,7 mm)	3.000" (76,2 mm)	0.630" (15,9 mm)	1.750" (44,4 mm)	6 each