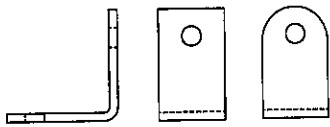
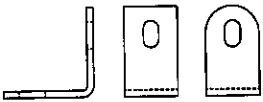
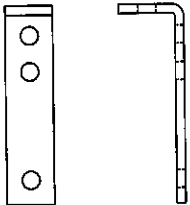
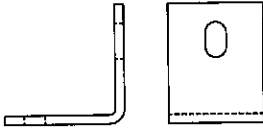


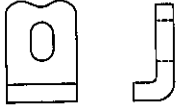
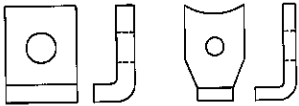
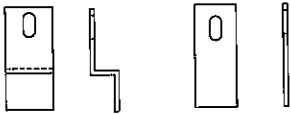
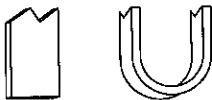
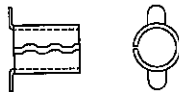
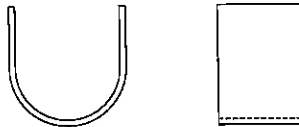

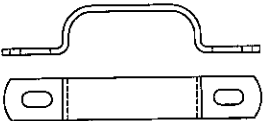


ILLUSTRATED TABLE OF CONTENTS

CLAMPS AND BRACKETS

TYPICAL CONFIGURATION	PART NUMBER	PAGE NUMBER
	4928	423
	4929	426
	4925	427
	5950	427
	4930	428
	4931	430
	2811	432

TYPICAL CONFIGURATION	PART NUMBER	PAGE NUMBER
	2811	432
		
	5356	433
	5355	433
	5357	434
	5358	434
	5310	435

Solder Lugs

Spring Clips

Spring Washers

Shoulder Washers

Stand Off Spacers

Fiat Round Washers - Metallic

Fiat Round Washers - Non-Metallic

O-Rings

Retaining Rings

Lockwashers, Retention Washers & Push-on Nuts

Clamps & Brackets

Expansion Plugs

Ground Straps, Bus Bars & Term. Blocks

Tab & Notch Washers

Misc. Washers & Tags

Solid State Insulators

Military Standards

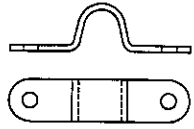
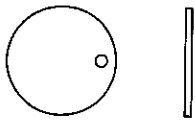
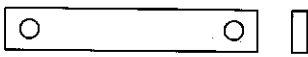
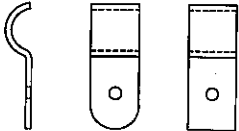
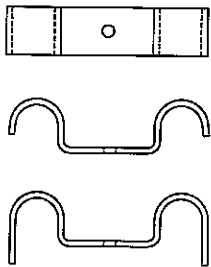
Custom Parts

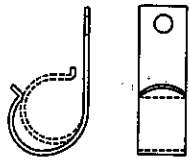
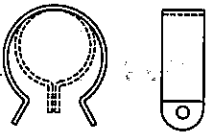
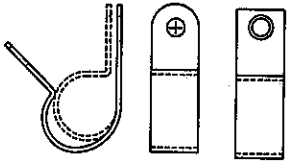
Engineering Tables

Num. & Alpha. Index of Parts

ILLUSTRATED TABLE OF CONTENTS

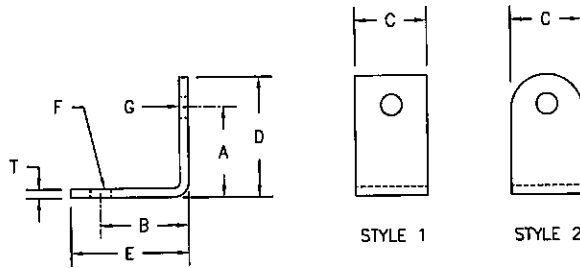
CLAMPS AND BRACKETS

TYPICAL CONFIGURATION	PART NUMBER	PAGE NUMBER
	5311	436
	2810	437
	4810	437
	5300	438
	5301	440

TYPICAL CONFIGURATION	PART NUMBER	PAGE NUMBER
	5318	441
	5315	442
	5317 5316	443 444

ANGLE BRACKETS STEEL

Custom Sizes Available . . . See Last Page of This Section



NOTE: Unless stated, all catalog parts are supplied without finish. See page 545 for specifying finishes.

PART NUMBER	STYLE	SCREW SIZE	A ± .010	B ± .010	C ± .010	D ± .016	E ± .016	F ± .005	G ± .005	T
4928-1	1	5 & 3	.156	.281	.500	.500	.500	.128	.106	.060
4928-2	1	6	.250	.250	.312	.437	.437	.148	.148	.036
4928-4	1	6	.250	.375	.312	.437	.562	.148	.148	.036
4928-6	1	6	.250	.500	.312	.437	.687	.148	.148	.036
4928-8	1	6	.250	.625	.312	.437	.812	.148	.148	.036
4928-3	1	6	.250	.750	.312	.437	.937	.148	.148	.036
4928-25	1	5 & 4	.282	.438	.406	.500	.750	.136	.125	.060
4928-26	1	5	.312	.312	.375	.500	.500	.136	.136	.060
4928-5	1	5	.344	.344	.312	.531	.531	.130	.130	.036
4928-7	1	6 & 5	.344	.344	.312	.531	.531	.157	.130	.036
4928-9	1	12	.367	.500	.750	.750	.750	.218	.218	.075
4928-10	1	6	.375	.375	.312	.562	.562	.148	.148	.036
4928-27	2	8	.375	.375	.438	.562	.562	.174	.174	.060
4928-28	2	10 & 8	.375	.375	.500	.625	.625	.205	.174	.060
4928-29	2	10	.375	.438	.500	.625	.688	.205	.205	.060
4928-12	1	6	.375	.500	.312	.562	.687	.148	.148	.036
4928-14	1	6	.375	.625	.312	.562	.812	.148	.148	.036
4928-11	1	6	.375	.750	.312	.562	.937	.148	.148	.036
4928-30	2	10	.375	.750	.500	.625	1.000	.204	.204	.048
4928-31	2	1/4 & 10	.375	.750	.500	.625	1.000	.257	.204	.048
4928-15	1	6	.438	.438	.312	.625	.625	.148	.148	.036
4928-32	2	8	.438	.438	.438	.625	.625	.174	.174	.060
4928-33	2	10	.438	.438	.500	.638	.638	.205	.205	.060
4928-16	1	6	.500	.500	.312	.687	.687	.148	.148	.036
4928-34	2	8	.500	.500	.438	.687	.687	.174	.174	.060
4928-35	2	10	.500	.500	.500	.700	.700	.205	.205	.060
4928-17	1	3 & 10	.500	.500	.500	.750	.750	.100	.193	.036
4928-18	1	6	.500	.625	.312	.687	.812	.148	.148	.036
4928-36	2	8	.500	.625	.438	.687	.812	.174	.174	.060
4928-19	2	10	.500	.625	.500	.700	.825	.205	.205	.060
4928-20	1	6	.500	.750	.312	.687	.937	.148	.148	.036
4928-37	2	8	.500	.750	.438	.687	.937	.174	.174	.060
4928-38	2	10	.500	.750	.500	.700	.950	.205	.205	.060
4928-21	1	6	.500	.875	.312	.687	1.062	.148	.148	.036
4928-39	2	8	.500	.875	.438	.687	1.062	.174	.174	.060
4928-40	2	10	.500	.875	.500	.700	1.075	.205	.205	.060
4928-41	2	6	.562	.562	.312	.750	.750	.148	.148	.036
4928-42	2	8	.562	.562	.438	.750	.750	.174	.174	.060
4928-43	2	10	.562	.562	.500	.762	.762	.205	.205	.060
4928-22	1	6	.625	.625	.312	.812	.812	.148	.148	.036

Solder Lugs

Spring Clips

Spring Washers

Shoulder Washers

Stand Off Spacers

Flat Round Washers - Metallic

Flat Round Washers - Non-Metallic

O-Rings

Retaining Rings

Lockwashers Retention Washers & Push-on Nuts

Clamps & Brackets

Expansion Plugs

Ground Straps, Bus Bars & Term. Blocks

Tab & Notch Washers

Misc. Washers & Tags

Solid State Insulators

Military Standards

Custom Parts

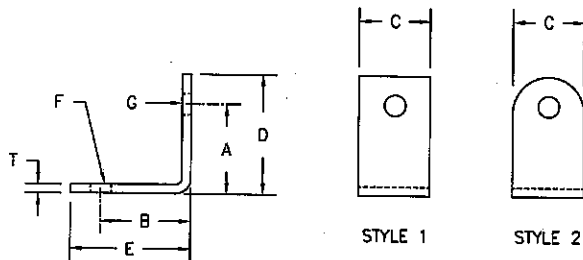
Engineering Tables

Num. & Alpha. Index of Parts

ANGLE BRACKETS

STEEL (Continued)

Custom Sizes Available . . . See Last Page of This Section



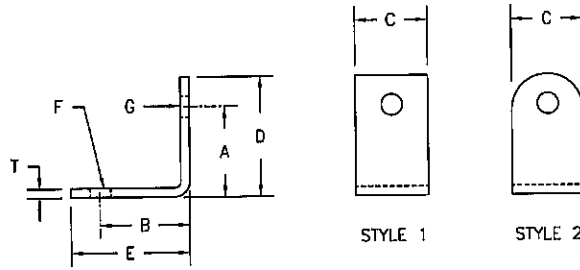
NOTE: Unless stated, all catalog parts are supplied without finish. See page 545 for specifying finishes.

PART NUMBER	STYLE	SCREW SIZE	A ±.010	B ±.010	C ±.010	D ±.016	E ±.016	F ±.005	G ±.005	T
4928-44	2	8	.625	.625	.438	.812	.812	.174	.174	.060
4928-45	2	10	.625	.625	.500	.825	.825	.205	.205	.060
4928-46	2	1/4	.625	.625	.625	.875	.875	.265	.265	.060
4928-23	1	6	.625	.719	.500	1.000	1.000	.156	.156	.120
4928-24	1	6	.625	.750	.312	.812	.937	.148	.148	.036
4928-47	2	8	.625	.750	.438	.812	.937	.174	.174	.060
4928-48	2	10	.625	.750	.500	.825	.950	.205	.205	.060
4928-13	1	6	.625	.875	.312	.812	1.062	.148	.148	.036
4928-49	2	10	.625	.875	.438	.812	1.062	.174	.174	.060
4928-50	2	10	.625	.875	.500	.825	1.075	.205	.205	.060
4928-51	1	6	.688	.688	.312	.875	.875	.148	.148	.036
4928-52	2	8	.688	.688	.438	.875	.875	.174	.174	.060
4928-53	2	10	.688	.688	.500	.888	.888	.205	.205	.060
4928-54	1	6	.750	.750	.312	.938	.938	.148	.148	.036
4928-55	2	8	.750	.750	.438	.938	.938	.174	.174	.060
4928-56	2	10	.750	.750	.500	.950	.950	.205	.205	.060
4928-57	2	1/4	.750	.750	.625	1.000	1.000	.265	.265	.060
4928-58	1	6	.750	.875	.312	.938	1.062	.148	.148	.036
4928-59	2	8	.750	.875	.438	.938	1.062	.174	.174	.060
4928-60	2	10	.750	.875	.500	.950	1.075	.205	.205	.060
4928-61	1	6	.750	1.000	.312	.938	1.187	.148	.148	.036
4928-62	2	8	.750	1.000	.438	.938	1.187	.174	.174	.060
4928-63	2	10	.750	1.000	.500	.950	1.200	.205	.205	.060
4928-64	1	6	.812	.812	.312	1.000	1.000	.148	.148	.036
4928-65	2	8	.812	.812	.438	1.000	1.000	.174	.174	.060
4928-66	2	10	.812	.812	.500	1.012	1.012	.205	.205	.060
4928-67	2	1/4	.812	.812	.625	1.062	1.062	.265	.265	.060
4928-68	1	6	.875	.875	.312	1.062	1.062	.148	.148	.036
4928-69	2	8	.875	.875	.438	1.062	1.062	.174	.174	.060
4928-70	2	10	.875	.875	.500	1.075	1.075	.205	.205	.060
4928-71	2	1/4	.875	.875	.625	1.125	1.125	.265	.265	.060
4928-72	1	6	.938	.938	.312	1.125	1.125	.148	.148	.036
4928-73	2	8	.938	.938	.438	1.125	1.125	.174	.174	.060
4928-74	2	10	.938	.938	.500	1.138	1.138	.205	.205	.060
4928-75	2	1/4	.938	.938	.625	1.188	1.188	.265	.265	.060
4928-76	1	6	1.000	1.000	.312	1.188	1.188	.148	.148	.036
4928-77	2	8	1.000	1.000	.438	1.188	1.188	.174	.174	.060
4928-78	2	10	1.000	1.000	.500	1.200	1.200	.205	.205	.060
4928-79	2	1/4	1.000	1.000	.625	1.250	1.250	.265	.265	.060
4928-80	2	8	1.125	1.125	.438	1.312	1.312	.174	.174	.060

ANGLE BRACKETS

STEEL (Continued)

Custom Sizes Available . . . See Last Page of This Section



NOTE: Unless stated, all catalog parts are supplied without finish. See page 545 for specifying finishes.

PART NUMBER	STYLE	SCREW SIZE	A ± .010	B ± .010	C ± .010	D ± .016	E ± .016	F ± .005	G ± .005	T
4928-81	2	10	1.125	1.125	.500	1.325	1.325	.205	.205	.060
4928-82	2	1/4	1.125	1.125	.625	1.375	1.375	.265	.265	.060
4928-83	2	8	1.250	1.250	.438	1.438	1.438	.174	.174	.060
4928-84	2	10	1.250	1.250	.500	1.450	1.450	.205	.205	.060
4928-85	2	1/4	1.250	1.250	.625	1.500	1.500	.265	.265	.060
4928-86	2	8	1.375	1.375	.438	1.562	1.562	.174	.174	.060
4928-87	2	10	1.375	1.375	.500	1.575	1.575	.205	.205	.060
4928-88	2	1/4	1.375	1.375	.625	1.625	1.625	.265	.265	.060
4928-89	2	8	1.500	1.500	.438	1.688	1.688	.174	.174	.060
4928-90	2	10	1.500	1.500	.500	1.700	1.700	.205	.205	.060
4928-91	2	1/4	1.500	1.500	.625	1.750	1.750	.265	.265	.060
4928-92	2	8	1.625	1.625	.438	1.812	1.812	.174	.174	.060
4928-93	2	10	1.625	1.625	.500	1.825	1.825	.205	.205	.060
4928-94	2	1/4	1.625	1.625	.625	1.875	1.875	.265	.265	.060
4928-95	2	8	1.750	1.750	.438	1.938	1.938	.174	.174	.060
4928-96	2	10	1.750	1.750	.500	1.950	1.950	.205	.205	.060
4928-97	2	1/4	1.750	1.750	.625	2.000	2.000	.265	.265	.060
4928-98	2	8	1.875	1.875	.438	2.062	2.062	.174	.174	.060
4928-99	2	10	1.875	1.875	.500	2.075	2.075	.205	.205	.060
4928-100	2	1/4	1.875	1.875	.625	2.125	2.125	.265	.265	.060
4928-101	2	8	2.000	2.000	.438	2.187	2.187	.174	.174	.060
4928-102	2	10	2.000	2.000	.500	2.200	2.200	.205	.205	.060
4928-103	2	1/4	2.000	2.000	.625	2.250	2.250	.265	.265	.060
4928-104	2	10	2.125	2.125	.500	2.325	2.325	.205	.205	.060
4928-105	2	1/4	2.125	2.125	.625	2.375	2.375	.265	.265	.060
4928-106	2	10	2.250	2.250	.500	2.450	2.450	.205	.205	.060
4928-107	2	1/4	2.250	2.250	.625	2.500	2.500	.265	.265	.060
4928-108	2	10	2.375	2.375	.500	2.575	2.575	.205	.205	.060
4928-109	2	1/4	2.375	2.375	.625	2.625	2.625	.265	.265	.060
4928-110	2	10	2.500	2.500	.500	2.700	2.700	.205	.205	.060
4928-111	2	1/4	2.500	2.500	.625	2.750	2.750	.265	.265	.060

Solder Lugs

Spring Clips

Spring Washers

Shoulder Washers

Stand Off Spacers

Flat Round Washers - Metallic

Flat Round Washers - Non-Metallic

O-Rings

Retaining Rings

Lockwashers, Retention Washers & Push-on Nuts

Clamps & Brackets

Expansion Plugs

Ground Straps, Bus Bars & Term. Blocks

Tab & Notch Washers

Misc. Washers & Tags

Solid State Insulators

Military Standards

Custom Parts

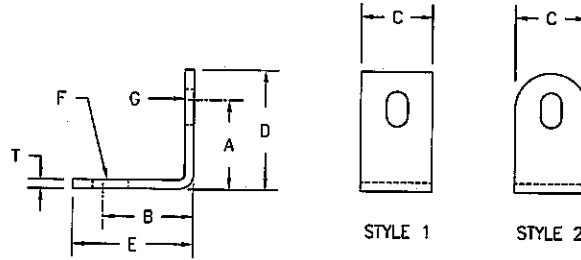
Engineering Tables

Num. & Alpha. Index of Parts

ANGLE BRACKETS

STEEL (Continued)

Custom Sizes Available . . . See Last Page of This Section



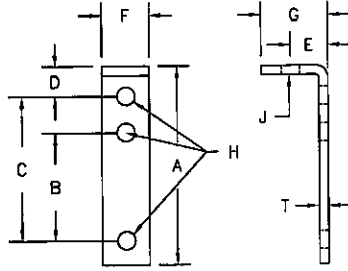
NOTE: Unless stated, all catalog parts are supplied without finish. See page 545 for specifying finishes.

PART NUMBER	STYLE	SCREW SIZE	A REF.	B REF.	C ±.010	D ±.016	E ±.016	F ±.005	G ±.005	T
4929-1	2	10	.500	.500	.500	.781	.781	.205x.283	.205x.283	.060
4929-2	2	1/4	.500	.500	.625	.812	.812	.265x.345	.265x.345	.060
4929-3	2	10	.562	.562	.500	.844	.844	.205x.283	.205x.283	.060
4929-4	2	1/4	.562	.562	.625	.844	.844	.265x.345	.265x.345	.060
4929-5	2	10	.625	.625	.500	.906	.906	.205x.283	.205x.283	.060
4929-6	2	1/4	.625	.625	.625	.937	.937	.265x.345	.265x.345	.060
4929-7	2	10	.688	.688	.500	.969	.969	.205x.283	.205x.283	.060
4929-8	2	1/4	.688	.688	.625	1.000	1.000	.265x.345	.265x.345	.060
4929-9	2	10	.750	.750	.500	1.031	1.031	.205x.283	.205x.283	.060
4929-10	2	1/4	.750	.750	.625	1.062	1.062	.265x.345	.265x.345	.060
4929-11	2	10	.812	.812	.500	1.093	1.093	.205x.283	.205x.283	.060
4929-12	2	1/4	.812	.812	.625	1.125	1.125	.265x.345	.265x.345	.060
4929-13	2	10	.875	.875	.500	1.156	1.156	.205x.283	.205x.283	.060
4929-14	2	1/4	.875	.875	.625	1.187	1.187	.265x.345	.265x.345	.060
4929-15	2	10	.938	.938	.500	1.219	1.219	.205x.283	.205x.283	.060
4929-16	2	1/4	.938	.938	.625	1.250	1.250	.265x.345	.265x.345	.060
4929-17	2	10	1.000	1.000	.500	1.281	1.281	.205x.283	.205x.283	.060
4929-18	2	1/4	1.000	1.000	.625	1.312	1.312	.265x.345	.265x.345	.060
4929-19	2	10	1.125	1.125	.500	1.406	1.406	.205x.283	.205x.283	.060
4929-20	2	1/4	1.125	1.125	.625	1.437	1.437	.265x.345	.265x.345	.060
4929-21	2	10	1.250	1.250	.500	1.531	1.531	.205x.283	.205x.283	.060
4929-22	2	1/4	1.250	1.250	.625	1.562	1.562	.265x.345	.265x.345	.060
4929-23	2	10	1.375	1.375	.500	1.656	1.656	.205x.283	.205x.283	.060
4929-24	2	1/4	1.375	1.375	.625	1.687	1.687	.265x.345	.265x.345	.060
4929-25	2	10	1.500	1.500	.500	1.781	1.781	.205x.283	.205x.283	.060
4929-26	2	1/4	1.500	1.500	.625	1.812	1.812	.265x.345	.265x.345	.060
4929-27	2	10	1.625	1.625	.500	1.906	1.906	.205x.283	.205x.283	.060
4929-28	2	1/4	1.625	1.625	.625	1.937	1.937	.265x.345	.265x.34	.060
4929-29	2	10	1.750	1.750	.500	2.031	2.031	.205x.283	.205x.283	.060
4929-30	2	1/4	1.750	1.750	.625	2.062	2.062	.265x.345	.265x.345	.060
4929-31	2	10	1.875	1.875	.500	2.156	2.156	.205x.283	.205x.283	.060
4929-32	2	1/4	1.875	1.875	.625	2.187	2.187	.265x.345	.265x.345	.060
4929-33	2	10	2.000	2.000	.500	2.281	2.281	.205x.283	.205x.283	.060
4929-34	2	1/4	2.000	2.000	.625	2.312	2.312	.265x.345	.265x.345	.060

TERMINAL BOARD BRACKETS

STEEL (Cadmium Plated [Type 1])

Custom Sizes Available . . . See Last Page of This Section

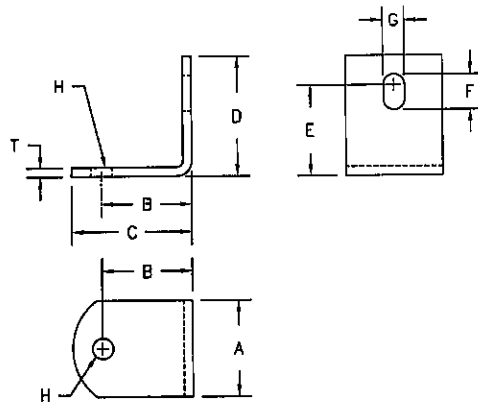


PART NUMBER	A ±.016	B ±.010	C ±.010	D ±.010	E ±.010	F ±.016	G ±.016	H ±.005	J ±.005	T
4925-1	13/16	—	3/8	1/4	31/64	3/8	5/8	.098	.156	1/16
4925-5	1-3/8	—	3/4	7/16	3/8	9/32	9/16	.145	.145	1/16
4925-9	1-1/2	—	5/8	5/8	3/8	3/8	9/16	.150	.150	1/16
4925-7	1-5/8	—	3/4	11/16	3/8	9/32	9/16	.145	.145	1/16
4925-2	2-1/8	—	1-1/2	11/32	3/8	3/8	9/16	.150	.150	1/16
4925-4	2-1/4	—	1-1/4	5/8	1/4	3/8	9/16	.150	.150	1/16
4925-6	2-5/8	1-1/2	2	11/32	3/8	3/8	9/16	.150	.150	1/16
4925-8	2-13/16	1-1/2	2	9/16	3/8	3/8	9/16	.150	.150	1/16
4925-10	3-3/32	—	2-1/2	11/32	3/8	3/8	9/16	.150	.150	1/16
4925-3	3-1/8	—	2-1/4	1/2	7/8	3/4	1-5/8	9/32	9/32x1.0	1/8

MOUNTING BRACKET

STEEL (Cadmium Plated [Type 1])

Custom Sizes Available . . . See Last Page of This Section



PART NUMBER	A ± 1/16	B ± 1/16	C ± 1/16	D ± 1/16	E REF.	F ± 1/16	G ± 1/32	H	T
5950-1	1/2	1	1-3/8	3/4	7/16	7/16	7/32	.205	.048
5950-2	3/4	1-1/4	1-3/4	3/4	7/16	7/16	7/32	.205	.048
5950-3	1-1/4	1-1/2	2-1/8	7/8	7/16	9/16	9/32	.205	.048

Solder Lugs

Spring Clips

Spring Washers

Shoulder Washers

Stand Off Spacers

Flat Round Washers - Metallic

Flat Round Washers - Non-Metallic

O-Rings

Retaining Rings

Lockwashers, Retention Washers & Push-on Nuts

Clamps & Brackets

Expansion Plugs

Ground Straps, Bus Bars & Term. Blocks

Tab & Notch Washers

Misc. Washers & Tags

Solid State Insulators

Military Standards

Custom Parts

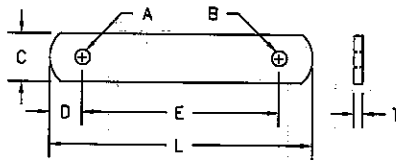
Engineering Tables

Num. & Alpha. Index of Parts

FLAT BRACKETS STEEL

(See Also Double Washers)

Custom Sizes Available . . . See Last Page of This Section



NOTE: Unless stated, all catalog parts are supplied without finish. See page 545 for specifying finishes.

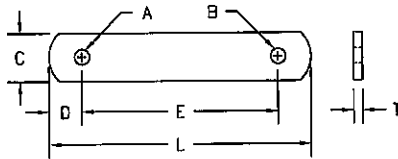
PART NUMBER	A ± .005	B ± .005	C ± .010	D ± .010	E ± .010	L ± .010	T
4930-1	.205	.205	.500	.200	.625	1.025	.060
4930-2	.205	.205	.500	.200	.688	1.088	.060
4930-3	.205	.205	.500	.200	.750	1.150	.060
4930-4	.205	.205	.500	.200	.812	1.212	.060
4930-5	.205	.205	.500	.200	.875	1.275	.060
4930-6	.205	.205	.500	.200	.938	1.338	.060
4930-7	.205	.205	.500	.200	1.000	1.400	.060
4930-8	.205	.205	.500	.200	1.125	1.525	.060
4930-9	.205	.205	.500	.200	1.250	1.650	.060
4930-10	.205	.205	.500	.200	1.375	1.775	.060
4930-11	.205	.205	.500	.200	1.500	1.900	.060
4930-12	.205	.205	.500	.200	1.625	2.025	.060
4930-13	.205	.205	.500	.200	1.750	2.150	.060
4930-14	.205	.205	.500	.200	1.875	2.275	.060
4930-15	.205	.205	.500	.200	2.000	2.400	.060
4930-16	.205	.205	.500	.200	2.125	2.525	.060
4930-17	.205	.205	.500	.200	2.250	2.650	.060
4930-18	.205	.205	.500	.200	2.375	2.775	.060
4930-19	.205	.205	.500	.200	2.500	2.900	.060
4930-20	.205	.265	.500	.230	.625	1.085	.060
4930-21	.205	.265	.500	.230	.688	1.148	.060
4930-22	.205	.265	.500	.230	.750	1.210	.060
4930-23	.205	.265	.500	.230	.812	1.272	.060
4930-24	.205	.265	.500	.230	.875	1.335	.060
4930-25	.205	.265	.500	.230	.938	1.398	.060
4930-26	.205	.265	.500	.230	1.000	1.460	.060
4930-27	.205	.265	.500	.230	1.126	1.585	.060
4930-28	.205	.265	.500	.230	1.250	1.710	.060
4930-29	.205	.265	.500	.230	1.375	1.835	.060
4930-30	.205	.265	.500	.230	1.500	1.960	.060
4930-31	.205	.265	.500	.230	1.625	2.085	.060
4930-32	.205	.265	.500	.230	1.750	2.210	.060
4930-33	.205	.265	.500	.230	1.875	2.335	.060
4930-34	.205	.265	.500	.230	2.000	2.460	.060
4930-35	.205	.265	.500	.230	2.125	2.585	.060
4930-36	.205	.265	.500	.230	2.250	2.710	.060
4930-37	.205	.265	.500	.230	2.375	2.835	.060
4930-38	.205	.265	.500	.230	2.500	2.960	.060
4930-39	.265	.265	.500	.230	.625	1.085	.060
4939-40	.265	.265	.500	.230	.688	1.148	.060

FLAT BRACKETS

STEEL (Continued)

(See Also Double Washers)

Custom Sizes Available . . . See Last Page of This Section



NOTE: Unless stated, all catalog parts are supplied without finish. See page 545 for specifying finishes.

PART NUMBER	A ±.005	B ±.005	C ±.010	D ±.010	E ±.010	L ±.010	T
4930-41	.265	.265	.500	.230	.750	1.210	.060
4930-42	.265	.265	.500	.230	.812	1.272	.060
4930-43	.265	.265	.500	.230	.875	1.335	.060
4930-44	.265	.265	.500	.230	.938	1.398	.060
4930-45	.265	.265	.500	.230	1.000	1.460	.060
4930-46	.265	.265	.500	.230	1.125	1.585	.060
4930-47	.265	.265	.500	.230	1.250	1.710	.060
4930-48	.265	.265	.500	.230	1.375	1.835	.060
4930-49	.265	.265	.500	.230	1.500	1.960	.060
4930-50	.265	.265	.500	.230	1.625	2.085	.060
4930-51	.265	.265	.500	.230	1.750	2.210	.060
4930-52	.265	.265	.500	.230	1.875	2.335	.060
4930-53	.265	.265	.500	.230	2.000	2.460	.060
4930-54	.265	.265	.500	.230	2.125	2.585	.060
4930-55	.265	.265	.500	.230	2.250	2.710	.060
4930-56	.265	.265	.500	.230	2.375	2.835	.060
4930-57	.265	.265	.500	.230	2.500	2.960	.060
4930-58	.265	.265	.500	.230	2.625	3.085	.060
4930-59	.265	.265	.500	.230	2.750	3.210	.060
4930-60	.265	.265	.500	.230	3.000	3.460	.060
4930-61	.327	.327	.625	.265	.750	1.280	.060
4930-62	.327	.327	.625	.265	.875	1.405	.060
4930-63	.327	.327	.625	.265	1.000	1.530	.060
4930-64	.327	.327	.625	.265	1.250	1.780	.060
4930-65	.327	.327	.625	.265	1.500	2.030	.060
4930-66	.327	.327	.625	.265	1.750	2.280	.060
4930-67	.327	.327	.625	.265	2.000	2.530	.060
4930-68	.327	.327	.625	.265	2.250	2.780	.060
4930-69	.327	.327	.625	.265	2.500	3.030	.060
4930-70	.327	.327	.625	.265	2.750	3.280	.060
4930-71	.327	.327	.625	.265	3.000	3.530	.060

Solder Lugs

Spring Clips

Spring Washers

Shoulder Washers

Stand Off Spacers

Flat Round Washers - Metallic

Flat Round Washers - Non-Metallic

D-Rings

Retaining Rings

Lockwashers, Retention Washers & Push-on Nuts

Clamps & Brackets

Expansion Plugs

Ground Straps, Bus Bars & Term. Blocks

Tab & Notch Washers

Misc. Washers & Tags

Solid State Insulators

Military Standards

Custom Parts

Engineering Tables

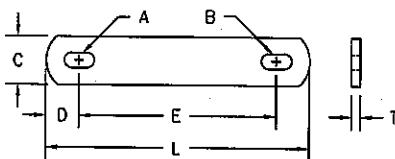
Num. & Alpha. Index of Parts

FLAT BRACKETS

STEEL (Continued)

(See Also Double Washers)

Custom Sizes Available . . . See Last Page of This Section



NOTE: Unless stated, all catalog parts are supplied without finish. See page 545 for specifying finishes.

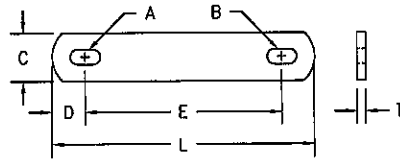
PART NUMBER	A ±.005	B ±.005	C ±.010	D ±.010	E ±.010	L ±.010	T
4931-1	.205 x .283	.205 x .283	.500	.289	.688	1.266	.060
4931-2	.205 x .283	.205 x .283	.500	.289	.750	1.328	.060
4931-3	.205 x .283	.205 x .283	.500	.289	.812	1.390	.060
4931-4	.205 x .283	.205 x .283	.500	.289	.875	1.453	.060
4931-5	.205 x .283	.205 x .283	.500	.289	.938	1.516	.060
4931-6	.205 x .283	.205 x .283	.500	.289	1.000	1.578	.060
4931-7	.205 x .283	.205 x .283	.500	.289	1.125	1.703	.060
4931-8	.205 x .283	.205 x .283	.500	.289	1.250	1.828	.060
4931-9	.205 x .283	.205 x .283	.500	.289	1.375	1.953	.060
4931-10	.205 x .283	.205 x .283	.500	.289	1.500	2.078	.060
4931-11	.205 x .283	.205 x .283	.500	.289	1.625	2.203	.060
4931-12	.205 x .283	.205 x .283	.500	.289	1.750	2.328	.060
4931-13	.205 x .283	.205 x .283	.500	.289	1.875	2.453	.060
4931-14	.205 x .283	.205 x .283	.500	.289	2.000	2.578	.060
4931-15	.205 x .283	.205 x .283	.500	.289	2.125	2.703	.060
4931-16	.205 x .283	.205 x .283	.500	.289	2.250	2.828	.060
4931-17	.205 x .283	.205 x .283	.500	.289	2.375	2.953	.060
4931-18	.205 x .283	.205 x .283	.500	.289	2.500	3.078	.060
4931-19	.205 x .283	.205 x .283	.500	.289	2.625	3.203	.060
4931-20	.205 x .283	.205 x .283	.500	.289	2.750	3.328	.060
4931-21	.205 x .283	.205 x .283	.500	.289	2.875	3.453	.060
4931-22	.205 x .283	.205 x .283	.500	.289	3.000	3.578	.060
4931-23	.265 x .345	.265 x .345	.500	.289	.812	1.390	.060
4931-24	.265 x .345	.265 x .345	.500	.289	.875	1.453	.060
4931-25	.265 x .345	.265 x .345	.500	.289	.938	1.516	.060
4931-26	.265 x .345	.265 x .345	.500	.289	1.000	1.578	.060
4931-27	.265 x .345	.265 x .345	.500	.289	1.125	1.703	.060
4931-28	.265 x .345	.265 x .345	.500	.289	1.250	1.828	.060
4931-29	.265 x .345	.265 x .345	.500	.289	1.375	1.953	.060
4931-30	.265 x .345	.265 x .345	.500	.289	1.500	2.078	.060
4931-31	.265 x .345	.265 x .345	.500	.289	1.625	2.203	.060
4931-32	.265 x .345	.265 x .345	.500	.289	1.750	2.328	.060
4931-33	.265 x .345	.265 x .345	.500	.289	1.875	2.453	.060
4931-34	.265 x .345	.265 x .345	.500	.289	2.000	2.578	.060
4931-35	.265 x .345	.265 x .345	.500	.289	2.125	2.703	.060
4931-36	.265 x .345	.265 x .345	.500	.289	2.250	2.828	.060
4931-37	.265 x .345	.265 x .345	.500	.289	2.375	2.953	.060
4931-38	.265 x .345	.265 x .345	.500	.289	2.500	3.078	.060
4931-39	.265 x .345	.265 x .345	.500	.289	2.625	3.203	.060
4931-40	.265 x .345	.265 x .345	.500	.289	2.750	3.328	.060

FLAT BRACKETS

STEEL (Continued)

(See Also Double Washers)

Custom Sizes Available . . . See Last Page of This Section



NOTE: Unless stated, all catalog parts are supplied without finish. See page 545 for specifying finishes.

PART NUMBER	A ±.005	B ±.005	C ±.010	D ±.010	E ±.010	L ±.010	T
4931-41	.265 x .345	.265 x .345	.500	.289	2.875	3.453	.060
4931-42	.265 x .345	.265 x .345	.500	.289	3.000	3.578	.060
4931-43	.265 x .345	.265 x .345	.500	.289	3.125	3.703	.060
4931-44	.265 x .345	.265 x .345	.500	.289	3.250	3.828	.060
4931-45	.327 x .408	.327 x .408	.625	.343	.812	1.498	.060
4931-46	.327 x .408	.327 x .408	.625	.343	.875	1.561	.060
4931-47	.327 x .408	.327 x .408	.625	.343	.938	1.624	.060
4931-48	.327 x .408	.327 x .408	.625	.343	1.000	1.686	.060
4931-49	.327 x .408	.327 x .408	.625	.343	1.125	1.811	.060
4931-50	.327 x .408	.327 x .408	.625	.343	1.250	1.936	.060
4931-51	.327 x .408	.327 x .408	.625	.343	1.375	2.061	.060
4931-52	.327 x .408	.327 x .408	.625	.343	1.500	2.186	.060
4931-53	.327 x .408	.327 x .408	.625	.343	1.625	2.311	.060
4931-54	.327 x .408	.327 x .408	.625	.343	1.750	2.436	.060
4931-55	.327 x .408	.327 x .408	.625	.343	1.875	2.561	.060
4931-56	.327 x .408	.327 x .408	.625	.343	2.000	2.686	.060
4931-57	.327 x .408	.327 x .408	.625	.343	2.125	2.811	.060
4931-58	.327 x .408	.327 x .408	.625	.343	2.250	2.936	.060
4931-59	.327 x .408	.327 x .408	.625	.343	2.375	3.061	.060
4931-60	.327 x .408	.327 x .408	.625	.343	2.500	3.186	.060
4931-61	.327 x .408	.327 x .408	.625	.343	2.625	3.311	.060
4931-62	.327 x .408	.327 x .408	.625	.343	2.750	3.436	.060
4931-63	.327 x .408	.327 x .408	.625	.343	2.875	3.561	.060
4931-64	.327 x .408	.327 x .408	.625	.343	3.000	3.686	.060
4931-65	.327 x .408	.327 x .408	.625	.343	3.125	3.811	.060
4931-66	.327 x .408	.327 x .408	.625	.343	3.250	3.936	.060

Solder Lugs

Spring Clips

Spring Washers

Shoulder Washers

Stand Off Spacers

Flat Round Washers - Metallic

Flat Round Washers - Non-Metallic

O-Rings

Retaining Rings

Lockwashers, Retention Washers & Push-on Nuts

Clamps & Brackets

Expansion Plugs

Ground Straps, Bus Bars & Term. Blocks

Tab & Notch Washers

Misc. Washers & Tags

Solid State Insulators

Military Standards

Custom Parts

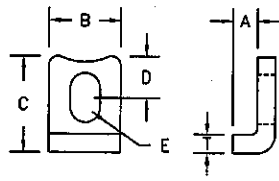
Engineering Tables

Num. & Alpha. Index of Parts

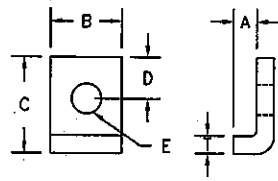
COMPONENT CLAMPS

STEEL (Cadmium Plated)

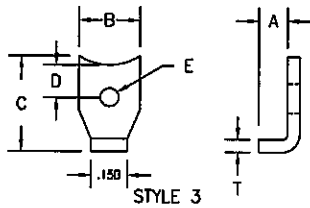
Custom Sizes Available . . . See Last Page of This Section



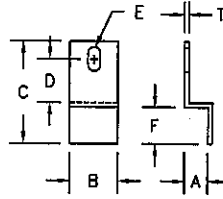
STYLE 1



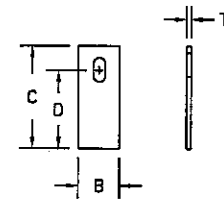
STYLE 2



STYLE 3



STYLE 4

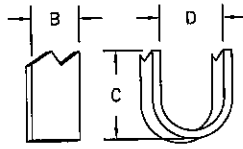


STYLE 5

PART NUMBER	STYLE	A ±.016	B ±.010	C ±.010	D ±.016	E ±.005	F ±.016	T
2811-1	1	.062	.312	.438	—	.125 x .195	—	.048
2811-2	1	.093	.312	.438	—	.125 x .195	—	.048
2811-3	1	.125	.312	.438	—	.125 x .195	—	.048
2811-4	1	.187	.312	.438	—	.125 x .195	—	.048
2811-5	2	.030	.250	.234	.078	.116	—	.015
2811-6	2	.062	.250	.344	.187	.125	—	.040
2811-7	2	.093	.250	.344	.187	.125	—	.040
2811-8	2	.125	.250	.344	.187	.125	—	.040
2811-9	2	.156	.250	.344	.187	.125	—	.040
2811-10	2	.187	.250	.344	.187	.125	—	.040
2811-11	2	.187	.450	.560	.250	.152	—	.060
2811-12	2	.250	.450	.560	.250	.152	—	.060
2811-13	2	.312	.550	.675	.300	.178	—	.075
2811-14	2	.375	.550	.675	.300	.178	—	.075
2811-15	2	.437	.650	.790	.350	.205	—	.090
2811-16	2	.500	.650	.790	.350	.205	—	.090
2811-17	3	.062	.250	.345	.171	.094	—	.048
2811-18	3	.062	.250	.345	.171	.144	—	.048
2811-19	3	.093	.250	.345	.171	.094	—	.042
2811-20	3	.093	.250	.345	.171	.144	—	.042
2811-21	3	.093	.250	.345	.171	.094	—	.048
2811-22	3	.093	.250	.345	.171	.144	—	.048
2811-23	3	.275	.250	.345	.171	.094	—	.048
2811-24	3	.275	.250	.345	.171	.144	—	.048
2811-25	4	.125	.312	.584	.221	.125 x .225	.125	.036
2811-26	4	.250	.400	.837	.294	.152 x .250	.250	.048
2811-27	4	.375	.500	1.065	.330	.178 x .300	.375	.060
2811-28	4	.500	.580	1.338	.400	.205 x .350	.500	.075
2811-29	5	—	.312	.440	.238	.125 x .225	—	.036
2811-30	5	—	.400	.700	.375	.152 x .250	—	.048
2811-31	5	—	.500	.825	.525	.178 x .300	—	.060
2811-32	5	—	.580	1.118	.755	.205 x .350	—	.075

CORD CLAMP (Strain Relief)

Custom Sizes Available . . . See Last Page of This Section

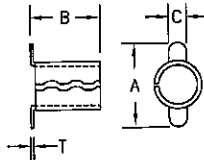


NOTE: Unless stated, all catalog parts are supplied without finish. See page 545 for specifying finishes.

PART NUMBER	D ± .010	B ± .016	C ± .016	THICKNESS	MATERIAL	FINISH
5356-1	.312	3/16	.345	.032	Brass	None

CORD CLAMP

Custom Sizes Available . . . See Last Page of This Section



PART NUMBER	TO FIT CABLE	A	B	C	THICKNESS	MATERIAL	FINISH
5355-1	7/32—1/4	1/2	7/16	7/64	.020	Brass	Cadmium Plate
5355-2	7/32—1/4	1/2	7/16	7/64	.020	Steel	Cadmium Plate
5355-3	7/32—1/4	1/2	7/16	7/64	.020	*Aluminum	None

*5052-H34

Solder Lugs

Spring Clips

Spring Washers

Shoulder Washers

Stand Off Spacers

Flat Round Washers – Metallic

Flat Round Washers – Non-Metallic

O-Rings

Retaining Rings

Lockwashers, Retention Washers & Push-on Nuts

Clamps & Brackets

Expansion Plugs

Ground Straps, Bus Bars & Term. Blocks

Tab & Notch Washers

Misc. Washers & Tags

Solid State Insulators

Military Standards

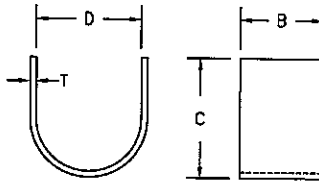
Custom Parts

Engineering Tables

Num. & Alpha. Index of Parts

CORD STRAIN RELIEF STEEL (Zinc Plated)

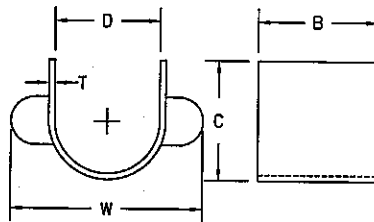
Custom Sizes Available . . . See Last Page of This Section



PART NUMBER	D ± .010	B ± .016	C ± .016	T
5357-1	.125	.100	.145	.018
5357-2	.187	.100	.209	.018
5357-3	.250	.190	.286	.030
5357-4	.312	.190	.349	.030
5357-5	.375	.190	.413	.030
5357-6	.437	.250	.489	.042
5357-7	.500	.250	.554	.042

CORD STRAIN RELIEF STEEL (Zinc Plated)

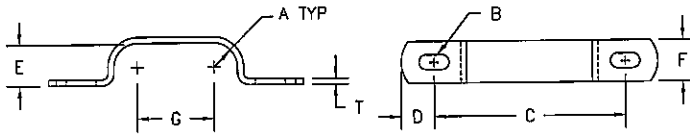
Custom Sizes Available . . . See Last Page of This Section



PART NUMBER	D ± .010	B ± .016	C ± .016	W ± .032	T
5358-1	.250	.312	.280	.538	.024
5358-2	.312	.375	.349	.652	.030
5358-3	.375	.500	.413	.755	.030
5358-4	.500	.562	.554	.964	.042

RETAINING CLAMP STEEL

Custom Sizes Available . . . See Last Page of This Section



NOTE: Unless stated, all catalog parts are supplied without finish. See page 545 for specifying finishes.

PART NUMBER	A RAD ±.010	B ±.005	C REF.	D ±.010	E ±.020	F ±.010	G ±.016	T
5310-1	.062	.150 x .230	.938	.290	.125	.250	.125	.030
5310-2	.062	.150 x .230	1.063	.290	.125	.250	.250	.030
5310-3	.125	.150 x .230	1.188	.290	.250	.250	.250	.030
5310-4	.125	.150 x .230	1.438	.290	.250	.250	.500	.030
5310-5	.156	.150 x .230	1.313	.290	.312	.250	.312	.030
5310-6	.156	.150 x .230	1.625	.290	.312	.250	.625	.030
5310-7	.187	.180 x .260	1.438	.290	.375	.375	.375	.030
5310-8	.187	.180 x .260	1.813	.290	.375	.375	.750	.030
5310-9	.218	.180 x .260	1.563	.290	.437	.375	.436	.030
5310-10	.218	.180 x .260	2.000	.290	.437	.375	.872	.030
5310-11	.250	.180 x .260	1.688	.290	.500	.375	.500	.030
5310-12	.250	.180 x .260	2.188	.290	.500	.375	1.000	.030
5310-13	.281	.180 x .260	1.812	.290	.562	.375	.562	.030
5310-14	.281	.180 x .260	2.375	.290	.562	.375	1.125	.030
5310-15	.312	.205 x .283	1.938	.290	.625	.500	.625	.030
5310-16	.312	.205 x .283	2.563	.290	.625	.500	1.250	.030
5310-17	.344	.205 x .283	2.064	.290	.688	.500	.688	.030
5310-18	.344	.205 x .283	2.752	.290	.688	.500	1.375	.030
5310-19	.375	.205 x .283	2.188	.290	.750	.500	.750	.030
5310-20	.375	.205 x .283	2.938	.290	.750	.500	1.500	.030
5310-21	.406	.205 x .283	2.312	.290	.812	.500	.812	.030
5310-22	.406	.205 x .283	3.125	.290	.812	.500	1.625	.030
5310-23	.438	.265 x .345	2.438	.290	.875	.500	.875	.030
5310-24	.438	.265 x .345	3.313	.290	.875	.500	1.750	.030
5310-25	.500	.265 x .345	2.748	.290	1.000	.500	1.000	.060
5310-26	.500	.265 x .345	3.748	.290	1.000	.500	2.000	.060
5310-27	.531	.265 x .345	2.873	.290	1.062	.500	1.062	.060
5310-28	.531	.265 x .345	3.935	.290	1.062	.500	2.125	.060
5310-29	.562	.265 x .345	2.998	.290	1.125	.500	1.125	.060
5310-30	.562	.265 x .345	4.123	.290	1.125	.500	2.250	.060
5310-31	.594	.265 x .346	3.122	.290	1.187	.500	1.186	.060
5310-32	.594	.265 x .346	4.309	.290	1.187	.500	2.372	.060
5310-33	.625	.265 x .346	3.248	.290	1.250	.500	1.250	.060
5310-34	.625	.265 x .346	4.498	.290	1.250	.500	2.500	.060

Solder
Lugs

Spring
Clips

Spring
Washers

Shoulder
Washers

Stand Off
Spacers

Flat Round
Washers -
Metallic

Flat Round
Washers -
Non-Metallic

O-Rings

Retaining
Rings

Lockwashers,
Retention
Washers &
Push-on Nuts

Clamps &
Brackets

Expansion
Plugs

Ground
Straps, Bus
Bars &
Term. Blocks

Tab & Notch
Washers

Misc.
Washers
& Tags

Solid State
Insulators

Military
Standards

Custom
Parts

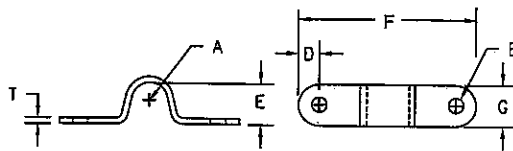
Engineering
Tables

Num. &
Alpha. Index
of Parts

RETAINING CLAMPS

STEEL (Continued)

Custom Sizes Available . . . See Last Page of This Section



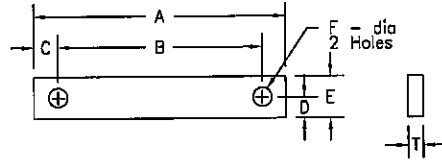
NOTE: Unless stated, all catalog parts are supplied without finish. See page 545 for specifying finishes.

PART NUMBER	A ±.010 RADIUS	B ±.010 HOLE	D ±.032	E ±.010	F ±.125	G ±.010	T
5311-1	.062	.173	.188	.109	.909	.375	.048
5311-2	.094	.173	.188	.172	.972	.375	.048
5311-3	.125	.173	.188	.234	1.034	.375	.048
5311-4	.125	.200	.188	.265	1.001	.375	.036
5311-5	.156	.173	.188	.297	1.096	.375	.048
5311-6	.188	.173	.188	.359	1.160	.375	.048
5311-7	.203	.203	.219	.406	1.750	.500	.048
5311-8	.219	.173	.188	.422	1.222	.375	.048
5311-9	.250	.173	.188	.484	1.284	.375	.048
5311-10	.270	.219	.219	.540	2.000	.500	.048
5311-11	.281	.173	.188	.547	1.346	.375	.048
5311-12	.281	.219	.219	.562	2.000	.500	.048
5311-13	.312	.173	.188	.609	1.408	.375	.048
5311-14	.312	.219	.219	.625	2.000	.500	.048
5311-15	.344	.173	.188	.672	1.472	.375	.048
5311-16	.344	.281	.375	.688	2.375	.625	.060
5311-17	.375	.173	.188	.734	1.534	.375	.048
5311-18	.375	.281	.375	.750	2.500	.688	.060
5311-19	.406	.173	.188	.797	1.590	.375	.048
5311-20	.422	.281	.375	.844	2.625	.688	.060
5311-21	.438	.173	.188	.859	1.660	.375	.048
5311-22	.469	.173	.188	.922	1.722	.375	.048
5311-23	.500	.173	.188	.984	1.784	.375	.048
5311-24	.500	.281	.375	1.000	2.750	.750	.075
5311-25	.531	.281	.375	1.062	2.875	.750	.075
5311-26	.562	.281	.375	1.125	3.000	.750	.075
5311-27	.625	.173	.188	1.234	2.034	.375	.048
5311-28	.657	.281	.375	1.315	3.125	.875	.075
5311-29	.750	.173	.188	1.484	2.284	.375	.048
5311-30	.750	.281	.375	1.500	3.375	.875	.075

TRANSFORMER STRAPS

STEEL (Cadmium Plated)

Custom Sizes Available . . . See Last Page of This Section

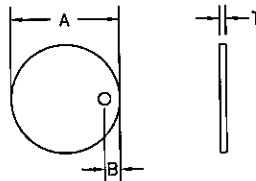


PART NUMBER	A ±.016	B ±.010	C ±.016	D ±.010	E ±.016	F ±.005	T
4810-1	1.437	1.250	.093	.140	.280	.093	.030
4810-6	1.625	1.375	.125	.150	.300	.125	.060
4810-2	2.188	1.812	.188	.220	.440	.166	.048
4810-3	2.812	2.438	.188	.280	.560	.166	.048
4810-4	3.438	3.000	.219	.360	.720	.193	.060
4810-5	4.938	4.469	.234	.520	1.03	.219	.060

HOLD DOWN CLAMPS

STEEL (Cadmium Plated)

Custom Sizes Available . . . See Last Page of This Section

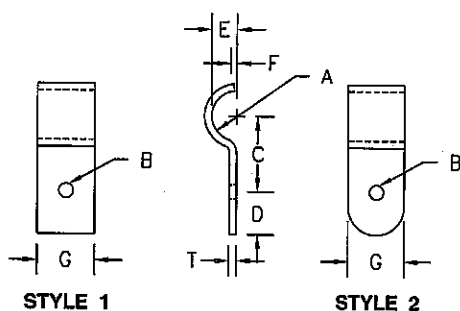


PART NUMBER	SCREW SIZE	HOLE DIA ±.005	A ±.010	B ±.010	T
2810-4	0	.063	.625	.187	.015
2810-5	0	.070	.220	.097	.042
2810-6	2	.119	.265	.080	.030
2810-10	4	.125	1.000	.122	.060
2810-7	4	.130	.312	.094	.015
2810-8	4	.130	.375	.125	.042
2810-9	8	.166	.625	.187	.120
2810-18	8	.167	.940	.156	.030
2810-16	8	.170	.520	.158	.120

- Solder Lugs
- Spring Clips
- Spring Washers
- Shoulder Washers
- Stand Off Spacers
- Flat Round Washers - Metallic
- Flat Round Washers - Non-Metallic
- O-Rings
- Retaining Rings
- Lockwashers, Retention Washers & Push-on Nuts
- Clamps & Brackets**
- Expansion Plugs
- Ground Straps, Bus Bars & Term. Blocks
- Tab & Notch Washers
- Misc. Washers & Tags
- Solid State Insulators
- Military Standards
- Custom Parts
- Engineering Tables
- Num. & Alpha. Index of Parts

CABLE CLAMPS

Custom Sizes Available . . . See Last Page of This Section

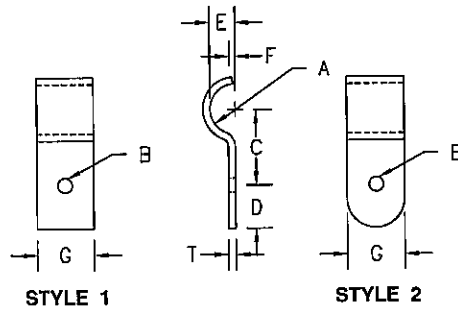


NOTE: Unless stated, all catalog parts are supplied without finish. See page 545 for specifying finishes.

PART NUMBER	STYLE	A ± .010 RADIUS	B ± .005 HOLE	C ± .010	D ± .016	E ± .010	F ± .016	G ± .010	T	MATERIAL
5300-1	1	3/64	.093	.156	.093	.093	.062	.250	.010	Steel
5300-13	1	3/64	.093	.156	.093	.093	.062	.250	.010	Stainless Steel
5300-39	1	3/64	.125	.171	.093	.093	.062	.250	.010	Stainless Steel
5300-42	1	3/64	.149	.220	.125	.090	.040	.250	.030	Steel
5300-3	1	1/16	.089	.203	.093	.125	0	.125	.024	Steel
5300-14	1	1/16	.089	.203	.093	.125	0	.125	.024	Stainless Steel
5300-38	1	1/16	.125	.203	.093	.125	0	.187	.024	Steel
5300-15	1	1/16	.125	.203	.093	.125	0	.187	.024	Stainless Steel
5300-43	1	1/16	.149	.250	.156	.125	.045	.344	.030	Steel
5300-2	1	1/16	.150	.312	.203	.125	.032	.375	.030	Steel
5300-5	1	1/16	.250	.375	.203	.125	.032	.375	.030	Steel
5300-44	1	5/64	.149	.250	.125	.096	.060	.250	.030	Steel
5300-7	1	5/64	.215	.370	.392	.150	.020	.625	.060	Steel
5300-9	2	3/32	.089	.218	.078	.109	.016	.156	.024	Steel
5300-16	2	3/32	.089	.218	.078	.109	.016	.156	.025	Brass
5300-11	1	3/32	.140	.281	.125	.109	.016	.250	.024	Steel
5300-17	1	3/32	.140	.281	.125	.109	.016	.250	.025	Aluminum
5300-46	1	3/32	.140	.281	.125	.109	.016	.250	.025	Stainless Steel
5300-4	1	3/32	.150	.344	.203	.187	.078	.375	.030	Steel
5300-20	2	7/64	.215	.500	.247	.193	0	.625	.060	Steel
5300-21	1	1/8	.106	.250	.078	.250	.125	.187	.015	Steel
5300-18	1	1/8	.106	.250	.078	.250	.125	.187	.012	Stainless Steel
5300-6	1	1/8	.150	.375	.203	.218	.125	.375	.030	Steel
5300-47	1	1/8	.177	.437	.187	.250	.050	.375	.060	Steel
5300-19	1	1/8	.205	.375	.250	.218	.032	.625	.030	Steel
5300-48	1	1/8	.205	.375	.250	.218	.032	.625	.030	Stainless Steel
5300-49	1	9/64	.169	.360	.187	.220	.080	.375	.030	Steel
5300-22	1	9/64	.215	.500	.327	.290	.100	.625	.060	Steel
5300-40	1	5/32	.130	.380	.180	.136	.010	.550	.042	Steel
5300-8	1	5/32	.150	.437	.203	.344	.187	.375	.030	Steel
5300-50	1	5/32	.177	.437	.187	.312	.050	.375	.060	Steel
5300-51	2	11/64	.149	.437	.156	.250	.062	.406	.048	Steel
5300-23	2	11/64	.215	.600	.317	.342	.140	.625	.042	Steel
5300-10	1	3/16	.150	.437	.203	.359	.172	.375	.030	Steel
5300-24	1	3/16	.150	.437	.203	.359	.172	.375	.030	Stainless Steel
5300-52	1	3/16	.177	.500	.187	.375	.020	.375	.060	Steel
5300-25	2	3/16	.215	.625	.447	.372	.175	.625	.060	Steel
5300-54	2	7/32	.180	.532	.250	.450	.093	.406	.048	Steel
5300-26	2	15/64	.230	.675	.365	.450	.180	.750	.060	Steel
5300-55	2	1/4	.218	.687	.327	.500	.180	.625	.075	Steel

CABLE CLAMPS *(Continued)*

Custom Sizes Available . . . See Last Page of This Section



NOTE: Unless stated, all catalog parts are supplied without finish. See page 545 for specifying finishes.

PART NUMBER	STYLE	A ± .010 RADIUS	B ± .005 HOLE	C ± .010	D ± .016	E ± .010	F ± .016	G ± .010	T	MATERIAL
5300-12	1	1/4	.150	.500	.203	.453	.172	.375	.030	Steel
5300-56	1	1/4	.177	.562	.187	.480	.020	.375	.060	Steel
5300-57	2	17/64	.180	.578	.250	.546	.093	.406	.048	Steel
5300-27	2	17/64	.215	.700	.382	.553	.260	.625	.075	Steel
5300-58	2	9/32	.177	.594	.187	.540	.020	.375	.060	Steel
5300-41	1	5/16	.120	.505	.150	.410	.100	.500	.030	Steel
5300-59	2	5/16	.180	.625	.250	.625	.125	.406	.060	Steel
5300-28	2	5/16	.215	.825	.200	.625	.275	.625	.060	Steel
5300-60	2	5/16	.215	.825	.200	.625	.275	.625	.060	Stainless Steel
5300-29	2	5/16	.275	.850	.537	.686	.280	.695	.075	Steel
5300-61	2	3/8	.209	.775	.250	.750	.020	.500	.075	Steel
5300-62	2	13/32	.275	.938	.640	.812	.280	.750	.075	Steel
5300-30	2	7/16	.275	1.000	.600	.890	.285	.750	.075	Steel
5300-63	2	7/16	.209	.840	.250	.840	.360	.500	.075	Steel
5300-64	2	1/2	.180	.812	.250	1.000	.125	.656	.060	Steel
5300-31	2	1/2	.275	1.100	.692	1.023	.385	.750	.060	Steel
5300-32	2	35/64	.283	1.200	.840	1.100	.625	.750	.075	Steel
5300-65	2	5/8	.281	1.020	.375	1.200	.550	.750	.075	Steel
5300-33	2	41/64	.275	1.300	.762	1.268	.580	.875	.075	Steel
5300-34	2	47/64	.280	1.550	.840	1.500	.700	.875	.075	Steel
5300-66	2	3/4	.281	1.140	.375	1.450	.650	.750	.075	Steel
5300-35	2	13/16	.353	1.600	.861	1.700	.700	1.000	.075	Steel
5300-36	2	55/64	.415	1.770	1.325	1.700	.700	1.000	.120	Steel
5300-37	2	61/64	.415	1.840	1.300	1.840	.700	1.135	.120	Steel

Solder Lugs

Spring Clips

Spring Washers

Shoulder Washers

Stand Off Spacers

Flat Round Washers - Metallic

Flat Round Washers - Non-Metallic

O-Rings

Retaining Rings

Lockwashers, Retention Washers & Push-on Nuts

Clamps & Brackets

Expansion Plugs

Ground Straps, Bus Bars & Term. Blocks

Tab & Notch Washers

Misc. Washers & Tags

Solid State Insulators

Military Standards

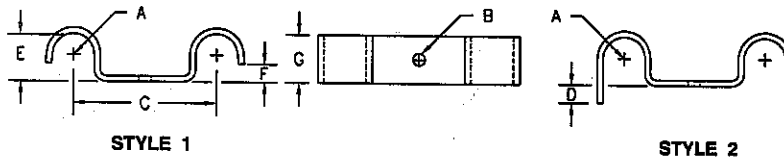
Custom Parts

Engineering Tables

Num. & Alpha. Index of Parts

DOUBLE CABLE CLAMPS STEEL

Custom Sizes Available . . . See Last Page of This Section

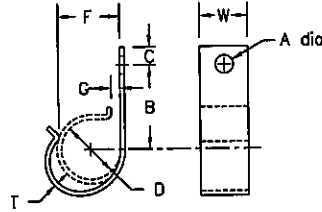


NOTE: Unless stated, all catalog parts are supplied without finish. See page 545 for specifying finishes.

PART NUMBER	STYLE	A ± .010 RADIUS	B ± .005 HOLE	C ± .010	D ± .016	E ± .010	F ± .016	G ± .010	T
5301-1	1	.125	.205	.750	—	.218	.032	.625	.030
5301-2	1	.156	.156	1.344	—	.265	.062	.500	.030
5301-3	1	.156 & .218	.156	1.344	—	.187 & .312	.062	.500	.042
5301-4	1	.187	.156	1.000	—	.281	.062	.500	.030
5301-5	1	.187 & .218	.156	1.000	—	.281 & .312	.062	.500	.060
5301-6	1	.218	.156	1.000	—	.312	.062	.500	.030
5301-7	1	.281	.125	.812	—	.094	0	.750	.030
5301-8	2	.062	.094	.437	.032	.047	—	.156	.030
5301-9	2	.093	.200	.812	.084	.078	—	.500	.024
5301-10	2	1.060	.196	2.320	.190	.370	—	.500	.060

"J" CLIPS – OPEN CONDITION

Custom Sizes Available . . . See Last Page of This Section



* ADD TO PART NUMBER
 -1 for aluminum
 -2 for steel, zinc plated
 -3 for stainless steel

NOTE: Unless stated, all catalog parts are supplied without finish. See page 545 for specifying finishes.

PART NUMBER	D † ±.015	A ±.005	W ±.010	B † ±.030	C ±.010	G † ±.030	T	F ±.060
5318-12-*	.125	.184	.375	.531	.219	.062	.030	.060
5318-18-*	.187	.184	.375	.562	.219	.062	.030	.140
5318-25-*	.250	.184	.375	.593	.219	.062	.030	.180
5318-31-*	.312	.184	.375	.625	.219	.062	.030	.230
5318-37-*	.375	.184	.375	.875	.219	.062	.030	.280
5318-43-*	.437	.184	.375	.937	.219	.062	.030	.330
5318-50-*	.500	.206	.500	1.000	.219	.125	.048	.380
5318-56-*	.562	.206	.500	1.060	.219	.125	.048	.420
5318-62-*	.625	.206	.500	1.120	.219	.125	.048	.470
5318-68-*	.688	.206	.500	1.180	.219	.125	.048	.520
5318-75-*	.750	.206	.500	1.250	.219	.125	.048	.560

† Clips are supplied in open condition, B, D & G dimensions to be measured with dummy component in place and clip closed.

Solder Lugs

Spring Clips

Spring Washers

Shoulder Washers

Stand Off Spacers

Flat Round Washers – Metallic

Flat Round Washers – Non-Metallic

O-Rings

Retaining Rings

Lockwashers, Retention Washers & Push-on Nuts

Clamps & Brackets

Expansion Plugs

Ground Straps, Bus Bars & Term. Blocks

Tab & Notch Washers

Misc. Washers & Tags

Solid State Insulators

Military Standards

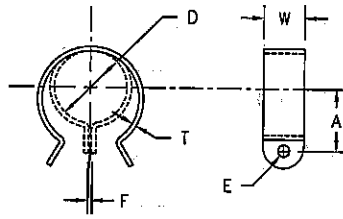
Custom Parts

Engineering Tables

Num. & Alpha. Index of Parts

TUBE CLAMPS — OPEN CONDITION

Custom Sizes Available . . . See Last Page of This Section



* ADD TO PART NUMBER

- 1 for aluminum
- 2 for steel, zinc plated
- 3 for stainless steel

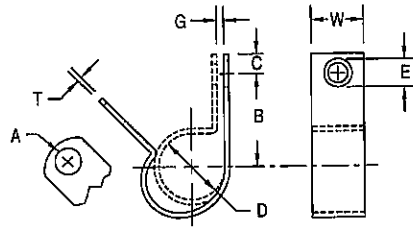
NOTE: Unless stated, all catalog parts are supplied without finish. See page 545 for specifying finishes.

PART NUMBER	D ± .015	W ± .010	T	A ± .030	E ± .005	F ± .060 †
5315-25-*	.250	.375	.030	.375	.201	.125
5315-31-*	.312	.375	.030	.406	.201	.125
5315-37-*	.375	.375	.030	.438	.201	.125
5315-43-*	.437	.375	.030	.469	.201	.125
5315-50-*	.500	.375	.030	.500	.201	.125
5315-56-*	.562	.375	.030	.531	.201	.125
5315-62-*	.625	.375	.030	.563	.201	.125
5315-75-*	.750	.375	.030	.625	.201	.125
5315-87-*	.875	.375	.030	.720	.201	.125
5315-100-*	1.000	.375	.030	.750	.201	.125

† Clamps supplied in open position — all dimensions are with a dummy component in place and clamp closed.

LOOP CLAMPS – OPEN CONDITION

Custom Sizes Available . . . See Last Page of This Section



* ADD TO PART NUMBER

- 1 for aluminum
- 2 for steel, zinc plated
- 3 for stainless steel

NOTE: Unless stated, all catalog parts are supplied without finish. See page 545 for specifying finishes.

PART NUMBER	D † ± .015	A ± .010	W ± .010	B † ± .030	C ± .010	G † ± .030	T	E ± .060
5317-12-*	.125	.184	.375	.344	.219	.062	.016	.210
5317-18-*	.187	.184	.375	.375	.219	.062	.016	.210
5317-25-*	.250	.184	.375	.406	.219	.062	.030	.210
5317-31-*	.312	.184	.375	.437	.219	.062	.030	.210
5317-37-*	.375	.184	.375	.469	.219	.062	.030	.210
5317-38-*	.375	.206	.500	.531	.219	.062	.030	SLOT
5317-43-*	.437	.184	.375	.562	.219	.062	.030	.210
5317-44-*	.437	.206	.500	.562	.219	.062	.030	SLOT
5317-50-*	.500	.184	.375	.594	.219	.062	.030	.210
5317-51-*	.500	.206	.500	.594	.219	.062	.030	SLOT
5317-56-*	.562	.206	.500	.625	.219	.062	.030	SLOT
5317-62-*	.625	.206	.500	.656	.219	.062	.030	SLOT
5317-68-*	.688	.206	.500	.688	.219	.062	.030	SLOT
5317-75-*	.750	.206	.500	.718	.219	.062	.030	SLOT

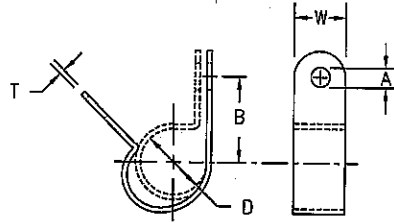
† Clips are supplied in open condition, B, D & G dimensions to be measured with dummy component in place and clip closed.

SLOT=.250 X .310

- Solder Lugs
- Spring Clips
- Spring Washers
- Shoulder Washers
- Stand Off Spacers
- Flat Round Washers – Metallic
- Flat Round Washers – Non-Metallic
- O-Rings
- Retaining Rings
- Lockwashers, Retention Washers & Push-on Nuts
- Clamps & Brackets
- Expansion Plugs
- Ground Straps, Bus Bars & Term. Blocks
- Tab & Notch Washers
- Misc. Washers & Tags
- Solid State Insulators
- Military Standards
- Custom Parts
- Engineering Tables
- Num. & Alpha. Index of Parts

LOOP CLAMPS NYLON

Custom Sizes Available . . . See Last Page of This Section

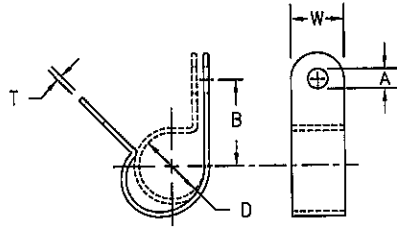


PART NUMBER	D Ref. COMP. DIA.	A ± .010	W ± .030	B ± .030	T ± .010
5316-1	.125	.140	.375	.329	.050
5316-2	.125	.167	.375	.329	.050
5316-3	.125	.167	.500	.315	.050
5316-4	.125	.203	.375	.329	.050
5316-5	.125	.203	.500	.315	.050
5316-6	.187	.140	.375	.378	.050
5316-7	.187	.167	.375	.378	.050
5316-8	.187	.167	.500	.425	.050
5316-9	.187	.203	.375	.378	.050
5316-10	.187	.203	.500	.425	.050
5316-11	.250	.140	.375	.410	.050
5316-12	.250	.167	.375	.410	.050
5316-13	.250	.167	.500	.410	.050
5316-14	.250	.203	.375	.410	.050
5316-15	.250	.203	.500	.410	.050
5316-16	.312	.140	.375	.495	.050
5316-17	.312	.167	.375	.495	.050
5316-18	.312	.167	.500	.500	.050
5316-19	.312	.203	.375	.495	.050
5316-20	.312	.203	.500	.500	.050
5316-21	.375	.140	.375	.595	.050
5316-22	.375	.167	.375	.595	.050
5316-23	.375	.167	.500	.530	.050
5316-24	.375	.203	.375	.595	.050
5316-25	.375	.203	.500	.530	.050
5316-26	.437	.140	.375	.574	.050
5316-27	.437	.167	.375	.574	.050
5316-28	.437	.167	.500	.560	.050
5316-29	.437	.203	.375	.574	.050
5316-30	.437	.203	.500	.560	.050
5316-31	.500	.140	.375	.605	.050
5316-32	.500	.167	.375	.605	.050
5316-33	.500	.167	.500	.595	.050
5316-34	.500	.203	.375	.605	.050
5316-35	.500	.203	.500	.595	.050

LOOP CLAMPS

NYLON (Continued)

Custom Sizes Available . . . See Last Page of This Section



PART NUMBER	D Ref. COMP. DIA.	A ± .010	W ± .030	B ± .030	T ± .010
5316-36	.562	.167	.500	.606	.050
5316-37	.562	.203	.375	.606	.050
5316-38	.562	.203	.500	.606	.050
5316-39	.625	.167	.500	.655	.050
5316-40	.625	.203	.375	.678	.050
5316-41	.625	.203	.500	.655	.050
5316-42	.687	.167	.500	.755	.050
5316-43	.687	.203	.500	.755	.050
5316-44	.750	.167	.500	.780	.050
5316-45	.750	.203	.500	.780	.050
5316-46	.812	.167	.500	.815	.050
5316-47	.812	.203	.500	.815	.050
5316-48	.875	.167	.500	.845	.050
5316-49	.875	.203	.500	.845	.050
5316-50	1.000	.203	.500	.910	.050
5316-51	1.125	.203	.500	.970	.050
5316-52	1.187	.203	.500	1.000	.050
5316-53	1.250	.203	.500	1.060	.050
5316-54	1.375	.203	.500	1.125	.050
5316-55	1.500	.203	.500	1.190	.050

Solder Lugs

Spring Clips

Spring Washers

Shoulder Washers

Stand Off Spacers

Flat Round Washers - Metallic

Flat Round Washers - Non-Metallic

O-Rings

Retaining Rings

Lockwashers, Retention Washers & Push-on Nuts

Clamps & Brackets

Expansion Plugs

Ground Straps, Bus Bars & Term. Blocks

Tab & Notch Washers

Misc. Washers & Tags

Solid State Insulators

Military Standards

Custom Parts

Engineering Tables

Num. & Alpha. Index of Parts

HOW TO REQUEST A FAX QUOTE:

CUSTOM CLAMPS & BRACKETS

If your application requires a custom metallic or non-metallic clamp or bracket with dimensions not listed in this catalog, simply photocopy the adjoining page, fill in all necessary dimensions, and fax it to us at 208-734-7222. It's that simple!

Seastrom Manufacturing can manufacture virtually any custom clamp or bracket you require.

Locate the part number configuration to best suit your application.
(See the illustrated table of contents in the front of this section.)

Fill in the configuration part number on the photocopy of the Fax Quote page, as well as all necessary dimensions.*

EXAMPLE

CLAMP or BRACKET CONFIGURATION: <u>4928</u>		
STYLE: <u>2</u>		
A: <u>.650</u>	E: <u>1.00</u>	J: _____
B: <u>.650</u>	F: <u>.250</u>	L: _____
C: <u>.500</u>	G: <u>.250</u>	R: _____
D: <u>1.00</u>	H: _____	T: <u>.062</u>
		W: _____

* If the configuration you require does not match the configuration in the front of this section, please refer to the Custom Parts section for a fax quote cover sheet and a blank print to sketch your own design.

If we can answer any questions concerning your custom clamp or bracket needs, please feel free to call us today at 1•800•634•2356.

FAX QUOTE

CUSTOM CLAMPS & BRACKETS

PLEASE FAX TO:

SEASTROM MANUFACTURING COMPANY, INC. 208•734•7222
ATTENTION: Inside Sales

DATE _____

CLAMP or BRACKET CONFIGURATION: _____		
STYLE: _____		
A: _____	E: _____	J: _____
B: _____	F: _____	L: _____
C: _____	G: _____	R: _____
D: _____	H: _____	T: _____
		W: _____

UNLESS OTHERWISE SPECIFIED ALL DIMENSIONS WILL BE TO CATALOG TOLERANCES.*

Material: _____ Deburring Required Yes No

Plating: _____

Other Requirements: _____

From: _____ **Title:** _____

Company: _____

Address: _____ **City:** _____ **State:** ____ **Zip:** _____

Phone: _____ **Fax:** _____

DO NOT TEAR OUT ... PLEASE PHOTOCOPY

*** See Pages 551 and 552 for commercial thickness tolerances.**

Please Quote the following:	<i>For Seastrom Use</i>	
QUANTITY	PRICE	DELIVERY
Estimated Yearly Usage:		