

Edward W.
DANIEL

The Big Name in Forged Lifting Hardware

**Reference
Manual**

ISO 9001/2000 Certification (without design)



General Information

Cavity Number
Tells which cavity used during multi-cavity production.

Size
Shank diameter in inches.

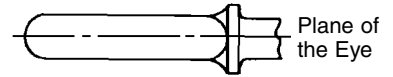


Lifting Eye Traceability Markings

Forging Code
Identifies equipment used during forging operation.

Heat Code
Refers to specific heat of steel used.

Diamond "D" Logo
Manufacturing trademark of the Edward W. Daniel Company



Application:

(a) Loads should always be applied to lifting eyes in the plane of the eye, not at some angle to this plane.

(b) Shoulder lifting eyes must be properly seated (should bear firmly against the mating part) otherwise the working loads must be reduced substantially. A steel washer or spacer may be required for proper seating.

(c) No greater load should be allowed than that given under rated capacity in each of the tables of dimensional data.

(d) To obtain greatest strength from a lifting eye, it must fit reasonably tight in the hole into which it is screwed to prevent unscrewing due to twist of cable. Tightness and seating must be checked after initial load.

(e) Lifting eyes should never be painted or otherwise coated when used for lifting, as such coatings will very likely cover up flaws.

(f) To attain the rated capacity listed for regular lifting eyes, full thread engagement allowing 1/2 turn for alignment to the plane of the eye is necessary.

Physical Testing:

Each lot of standard lifting eyes is manufactured and tested according to ASTM A489-93 and ANSI B18. 15.

BREAKING STRENGTH: The threaded shank is screwed into one jaw of a testing machine and a pin secured to the other jaw passed through the eye.

BEND TEST: Unthreaded parts must be capable of being bent to pressure or blows through 45° without showing cracks or indications of failure.

TENSILE TEST: Per ASTM A489.

PLAIN & SHOULDER LIFTING EYES

Material Data:

Grade C1030
Heat Treat Quench & Draw

Mechanical Properties:

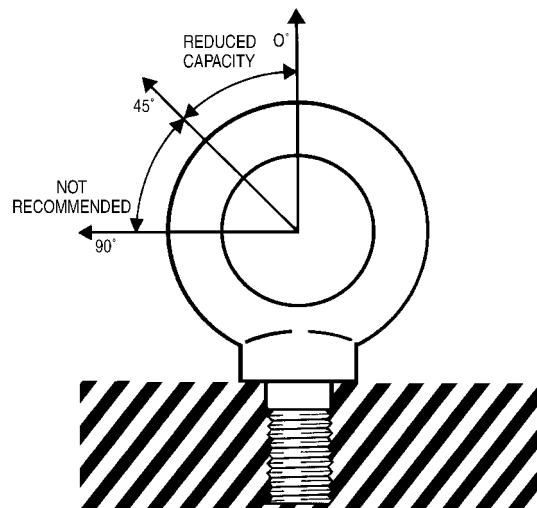
Grain Size 5 or Finer
Tensile 65,000 psi min.
Yield 30,000 psi min.
Elongation 30% min.
Reduction of Area 60% min.

Diamond "D" Lifting Eyes are processed and tested to the above requirements. Tests are performed on randomly selected lifting eyes from a given heat lot.

LIMITED WARRANTY: See page 36 .

CERTIFICATIONS: Request for certification(s) must be made at time of order entry and there will be a charge associated with the certification.

FORGING TOLERANCES: Tolerances on all forged products is 1/32".



Lifting Eye Capacities

DIAMETER	RATED CAPACITY					
	0°		45°		over 45°	
IN.	MM	LBS.	KGS	LBS.	KGS	
1/4	(M6)	500	(210)	125	(52)	N
5/16	(M7)	900	(370)	225	(92)	O
3/8	(M8)	1,300	(500)	325	(125)	T
7/16	(M10)	1,800	(740)	450	(185)	
1/2	(M12)	2,400	(1,030)	600	(257)	
9/16	(M14)	3,200	(1,600)	800	(400)	R
5/8	(M16)	4,000	(1,810)	1,000	(452)	E
3/4	(M18)	5,000	(2,140)	1,250	(535)	C
7/8	(M20)	7,000	(2,860)	1,750	(715)	O
1	(M24)	9,000	(3,850)	2,250	(962)	M
1-1/8	(M27)	12,000	(5,200)	3,000	(1,300)	M
1-1/4	(M30)	15,000	(6,400)	3,750	(1,600)	E
1-1/2	(M36)	21,000	(8,970)	5,250	(2,242)	N
1-3/4	(M45)	28,000	(11,960)	7,000	(2,990)	D
2	(M52)	38,000	(16,230)	9,500	(4,057)	E
2-1/2	(M65)	56,000	(24,200)	14,000	(6,000)	D

(Metric in Parenthesis)

NOTE ON LIFTING EYE & NUT EYE BOLT RATED CAPACITIES
All rated lifting capacities included in the product charts are based on full sized shank and eye unaltered, and unaltered threading.

Lifting Eye Capacities & Safety information

Rated Capacity: The maximum recommended load that should be exerted on the item at zero degree vertical pull. All rated load values are for pulls exerted in the plane of the eye.

Ultimate Strength: As defined in the machinist's handbook is: the stress at which a material in tension, compression, or shear will rupture or fracture.

Yield Strength: The maximum stress that can be applied to a material without permanent deformation of the material.

Safety Factor: An industry term denoting theoretical capability. Lifting eye rated capacity is figured with a 5 to 1 safety factor for a zero degree straight vertical pull

Dimensions in Inches · Weight in Pounds
Please include stock number and size when ordering



Product Index



EYE BOLTS - Carbon and Alloy Steel

Machinery Style Plain Pattern & 8 Thread Pitch and High Strength Lifting Eye Bolts	1
Machinery Style Shoulder Pattern & 8 Thread Pitch and High Strength Lifting Eye Bolts	2
Metric Reduced and Alloy Reduced Eye Bolts	3
Eye Bolt Blanks, Plain & Shoulder Pattern, Stainless Steel and Nut Eye Bolts, Plain & Shoulder Pattern Stainless Steel	4
Nut Eye Bolts, Plain Pattern	5
Nut Eye Bolts Shoulder Pattern and Special Eye Bolt Sizes	6

DIN 580/582 EYE BOLTS, EYE NUTS & PAD "D" EYES

HOIST RINGS Center Pull Style, Metric Center Pull Style	8
-------------------------------------------------------------------	---

ROD ENDS

Forged Carbon Steel and Stainless Steel	9
-----------------------------------------	---

EYE NUTS

Connecting Eyes, High Strength Lifting Eyes	10
Stainless Steel	11

TURNBUCKLES

Turnbuckle Bodies	11-12
Stainless Steel, Stub End Turnbuckles	12
Eye & Eye, Hook & Eye Models	13
Hook & Hook, Jaw & Eye Models	14
Jaw & Jaw Models	15

TURNBUCKLE FITTINGS

Stub Ends	16
Jaws	17
Hooks	18
Round Eyes, Oval Eyes	19

ANCHOR SHACKLES

Screw Pin - American Made	20
Screw and Round Pin - American Made and Imported	20

WIRE ROPE FITTINGS

Wire Rope Clips - Forged and Stainless Steel	21
Malleable Wire Rope Clips, Safe-Line Clamps, Heavy Wire Rope, Thimbles	22
Stainless Steel Heavy Wire Rope Thimbles, Regular Type, Stainless Steel Regular Type Thimbles	23

HOOKS

Chain Slip, Chain Grab, Clevis Slip and Clevis Grab	24
-----------------------------------------------------	----

CHAIN HARDWARE

Double Clevis Links, Connecting Links, Chain Repair Links and Cold Shuts	25
--------------------------------------------------------------------------	----

BLUE DIAMOND™ WROUGHT NUT EYE BOLTS

Bent Eyes and Stainless Steel	26
Bent Eyes Welded Closed	27

BLUE DIAMOND™ U-BOLTS

U-Bolts	27
Stainless Steel, Square, Strap Washers	28

HOOKS AND SCREW EYE BOLTS

Clothes Line Hooks, Porch Swing Hooks, Lag Screw Eyes, S-Hooks and Forged Screw Eye Bolts	29
----------------------------------------------------------------------------------------------	----

FLANGES

Medium Heavy Pilot-Type, Extra Heavy Flat-Type, Standard Heavy Flat Flanges	30
Trimmed Special Heavy Flange Straight Pilot, Standard Heavy Curved Flange, Standard Heavy Flange Flat Type and Stainless Steel Standard Heavy Flange Straight Pilot	31

MISCELLANEOUS PRODUCTS

Malleable Bevel Washers, Set-Up Wedges, Wedge Shims and Wall Angle Brackets	32
Plastic Yoke, Forged Steel Adjustable, Plain Yoke Ends and Clevis Pins	33
Strap Ends, Tee Bolts, Tarpaulin Rings and Lifting Lugs	34

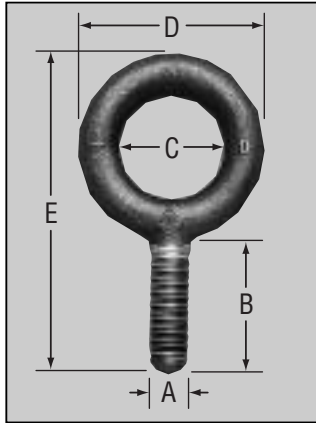
ELEVATOR MAINTENANCE HARDWARE

Elevator Rail Shims - Double and Single	35
Rail Clips and Springs for Socket Bolts	36

Eye Bolts

Machinery Style Plain Pattern

- Forged/ASTM A489
- 1030 Carbon Steel
- Self-Colored**



Stock No.	Zink Plated Stock No.	Thread Size UNC-2A A	Shank Length B	I.D. Eye C	O.D. Eye D	Overall Length E	Approx. Wt. Per 100 Pcs.	Rated Capacity	Blanks*
13611	ZP13611	1/4-20	1	3/4	1 3/16	2 7/32	5.0	500	R13611
13621	ZP13621	5/16-18	1 1/8	7/8	1 7/16	2 19/32	10.0	900	R13621
13631	ZP13631	3/8-16	1 1/4	1	1 11/16	3	15.0	1,300	R13631
13638	ZP13638	7/16-14	1 3/8	1 3/32	1 13/16	3 7/32	20.0	1,800	R13638
13641	ZP13641	1/2-13	1 1/2	1 3/16	2 1/8	3 21/32	35.0	2,400	R13641
13650	ZP13650	9/16-12	1 3/4	1 3/8	2 9/16	4 3/8	60.0	3,200	R13650
13661	ZP13661	5/8-11	1 3/4	1 3/8	2 9/16	4 3/8	60.0	4,000	R13661
13672	ZP13672	3/4-10	2	1 1/2	2 13/16	4 7/8	90.0	5,000	R13672
13682	ZP13682	7/8-9	2 1/4	1 11/16	3 3/16	5 1/2	145.0	7,000	R13682
13702	ZP13702	1-8	2 1/2	1 13/16	3 9/16	6 1/8	200.0	9,000	R13702
13712	ZP13712	1-1/8-7	2 3/4	2	4 1/16	6 7/8	285.0	12,000	R13712
13723	ZP13723	1-1/4-7	3	2 3/16	4 7/16	7 1/2	390.0	15,000	R13723
13753	ZP13753	1-1/2-6	3 1/2	2 1/2	5 3/16	8 3/4	635.0	21,000	R13753
13770	ZP13770	1-3/4-5	3 3/4	2 7/8	6	9 13/16	1050.0	28,000	R13770
13780	ZP13780	2-4 1/2	4	3 1/4	6 7/8	11	1470.0	38,000	R13780
13790	ZP13790	2-1/2-4	5	4	8 1/2	13 5/8	2900.0	56,000	—

Part #13650 dimensions not in accordance with ANSI B18.15.

8 Thread Pitch Machinery Style Plain Pattern

- Forged/ASTM A489
- 1030 Carbon Steel
- Self-Colored**

Stock No.	Thread Size UNC-2A A	Shank Length B	I.D. Eye C	O.D. Eye D	Overall Length E	Approx. Wt. Per 100 Pcs.	Rated Capacity
813712	1-1/8-8	2 3/4	2	4 1/16	6 7/8	285.0	12,000
813723	1-1/4-8	3	2 3/16	4 7/16	7 1/2	390.0	15,000
813753	1-1/2-8	3 1/2	2 1/2	5 3/16	8 3/4	635.0	21,000
813770	1-3/4-8	3 3/4	2 7/8	6	9 13/16	1050.0	28,000
813780	2-8	4	3 1/4	6 7/8	11	1470.0	38,000
813790	2-1/2-8	5	4	8 1/2	13 5/8	2900.0	56,000

*Blanks have no rated capacity.

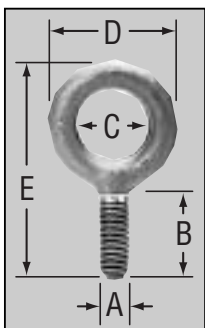
High Strength Eye Bolts

- Forged • 8620 Alloy Steel
- Low Temperature Application

Stock No.	Thread Size UNC-2A A	Shank Length B	I.D. Eye C	O.D. Eye D	Overall Length E	Approx. Wt. Per 100 Pcs.	Rated Capacity
13631LT	3/8	1 1/4	1	1 11/16	3	16.0	1,480
13641LT	1/2	1 1/2	1 3/16	2 1/16	3 21/32	34.8	2,700
13661LT	5/8	1 3/4	1 3/8	2 9/16	4 3/8	67.0	4,300
13672LT	3/4	2	1 1/2	2 13/16	4 7/8	100.0	6,400
13682LT	7/8	2 1/4	1 11/16	3 3/16	5 1/2	163.0	8,800
13702LT	1	2 1/2	1 13/16	3 9/16	6 1/8	222.0	11,600

Machinery Style Stainless Steel

- 304 Stainless Steel



Plain Pattern

Stock No.	Thread Size UNC-2A A	Shank Length B	I.D. Eye C	O.D. Eye D	Overall Length E	Approx. Wt. Per 100 Pcs.	Rated Capacity	Blanks*
SS13611	1/4-20	1	3/4	1 3/16	2 3/8	5.0	460	SSR13611
SS13621	5/16-18	1 1/8	7/8	1 7/16	2 13/16	9.6	780	SSR13621
SS13631	3/8-16	1 1/4	1	1 11/16	3	14.0	1,160	SSR13631
SS13641	1/2-13	1 1/2	1 3/16	2 1/8	3 21/32	29.5	2,150	SSR13641
SS13661	5/8-11	1 3/4	1 3/8	2 9/16	4 3/8	58.0	3,440	SSR13661
SS13672	3/4-10	2	1 1/2	2 13/16	4 7/8	88.5	5,140	SSR13672
SS13702	1-8	2 1/2	1 13/16	3 9/16	6 1/8	226.0	9,370	SSR13702

*Blanks have no rated capacity.

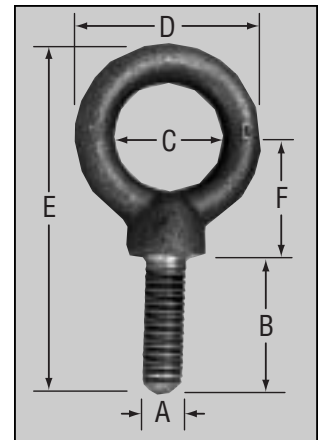
WARNING

RATED CAPACITY IS DRASTICALLY REDUCED WHEN LOADING AT ANY ANGLE. LOADING MUST NEVER BE MADE AT AN ANGLE GREATER THAN 45° FROM BOLT CENTERLINE. AT AN ANGLE OF 45°, RATED CAPACITY IS REDUCED TO 1/4 OF THE TABULATED VALUE. Reference Page i

Eye Bolts

Machinery Style Shoulder Pattern

- Forged/ASTM A489
- 1030 Carbon Steel
- Self-Colored**



8 Thread Pitch Machinery Style Shoulder Pattern

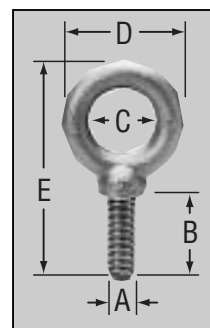
- Forged/ASTM A489
- 1030 Carbon Steel
- Self-Colored**

High Strength Eye Bolts

- Forged • 8620 Alloy Steel
- Low Temperature Application

Machinery Style Stainless Steel

- 304 Stainless Steel



Stock No.	Zinc Plated Stock No.	Thread Size UNC-2A A	Shank Length B	I.D. Eye C	O.D. Eye D	Overall Length E	Center of Eye to Shoulder F	Width of Shoulder G	Approx. Wt. Per 100 Pcs.	Rated Capacity	Blanks*
14611	14611ZP	1/4-20	1	3/4	1 1/16	2 3/8	3/4	1 7/32	5.0	500	R14611
14621	14621ZP	5/16-18	1 1/8	7/8	1 1/16	2 13/16	1 5/16	1 19/32	10.0	900	R14621
14631	14631ZP	3/8-16	1 1/4	1	1 11/16	3 1/4	1 1/8	2 1/32	20.0	1,300	R14631
14638	14638ZP	7/16-14	1 3/8	1 1/32	1 13/16	3 3/16	1 1/4	2 5/32	25.0	1,800	R14638
14641	14641ZP	1/2-13	1 1/2	1 1/16	2 1/8	3 31/32	1 3/8	2 9/32	40.0	2,400	R14641
14650	14650ZP	9/16-12	1 3/4	1 3/8	2 9/16	4 3/4	1 21/32	1 1/32	70.0	3,200	R14650
14661	14661ZP	5/8-11	1 3/4	1 3/8	2 9/16	4 3/4	1 21/32	1 1/32	75.0	4,000	R14661
14672	14672ZP	3/4-10	2	1 1/2	2 13/16	5 1/4	1 13/16	1 3/16	100.0	5,000	R14672
14682	14682ZP	7/8-9	2 1/4	1 11/16	3 3/16	6	2 1/8	1 3/8	160.0	7,000	R14682
14702	14702ZP	1-8	2 1/2	1 13/16	3 3/16	6 5/8	2 5/16	1 9/16	275.0	9,000	R14702
14712	14712ZP	1-1/8-7	2 3/4	2	4 1/16	7 17/32	2 11/16	1 3/4	340.0	12,000	R14712
14723	14723ZP	1-1/4-7	3	2 3/16	4 7/16	8 7/32	2 15/16	1 15/16	465.0	15,000	R14723
14753	14753ZP	1-1/2-6	3 1/2	2 1/2	5 3/16	9 15/32	3 5/16	2 3/16	765.0	21,000	R14753
14770	14770ZP	1-3/4-5	3 3/4	2 7/8	6	10 13/16	4	2 1/2	1145.0	28,000	R14770
14780	14780ZP	2-4 1/2	4	3 1/4	6 7/8	11 7/8	4 3/8	2 7/8	1700.0	38,000	R14780

Part #14650 dimensions not in accordance with ANSI B18.15.
Shoulder style lifting eye meets MS51937 specification.

Stock No.	Thread Size UNC-2A A	Shank Length B	I.D. Eye C	O.D. Eye D	Overall Length E	Center of Eye to Shoulder F	Width of Shoulder G	Approx. Wt. Per 100 Pcs.	Rated Capacity
814712	1-1/8-8	2 3/4	2	4 1/16	7 17/32	2 11/16	1 3/4	340.0	12,000
814723	1-1/4-8	3	2 3/16	4 7/16	8 7/32	2 15/16	1 15/16	465.0	15,000
814753	1-1/2-8	3 1/2	2 1/2	5 3/16	9 15/32	3 5/16	2 3/16	765.0	21,000
814770	1-3/4-8	3 3/4	2 7/8	6	10 13/16	4	2 1/2	1145.0	28,000
814780	2-8	4	3 1/4	6 7/8	11 7/8	4 3/8	2 7/8	1700.0	38,000

Shoulder style lifting eye meets MS51937 specification.

Shoulder Pattern

14631LT	3/8	1 1/4	1	1 11/16	3 1/4	1 1/8	-	16.0	1,480
14641LT	1/2	1 1/2	1 1/16	2 1/8	3 31/32	1 3/8	-	34.8	2,700
14661LT	5/8	1 3/4	1 3/8	2 1/2	4 3/4	1 21/32	-	67.0	4,300
14672LT	3/4	2	1 1/2	2 13/16	5 1/4	1 13/16	-	100.0	6,400
14682LT	7/8	2 1/4	1 11/16	3 3/16	6	2 1/8	-	163.0	8,800
14702LT	1 2 1/2	1 3/16	3 9/16	6 5/8	2 5/16	222.0	-	11,600	
14723LT	1-1/4	3	2 3/16	4 7/16	8 7/32	2 15/16	-	444.0	18,400
14753LT	1-1/2	3 1/2	2 1/2	5 3/16	9 15/32	3 5/16	-	736.0	26,600
14780LT***	2 4	3 1/4	6 7/8	11 7/8	4 3/8	-	1670.0	47,600	

***These products will be discontinued when stock is depleted.

Stock No.	Thread Size UNC-2A A	Shank Length B	I.D. Eye C	O.D. Eye D	Overall Length E	Approx. Wt. Per 100 Pcs.	Rated Capacity	Blanks*
SS14611	1/4-20	1	3/4	1 1/16	2 3/8	5.0	460	SSR14611
SS14621	5/16-18	1 1/8	7/8	1 1/16	2 13/16	9.6	780	SSR14621
SS14631	3/8-16	1 1/4	1	1 11/16	3 1/4	16.0	1,160	SSR14631
SS14641	1/2-13	1 1/2	1 1/16	2 1/8	3 31/32	34.8	2,150	SSR14641
SS14661	5/8-11	1 3/4	1 3/8	2 9/16	4 3/4	67.0	3,440	SSR14661
SS14672	3/4-10	2	1 1/2	2 13/16	5 1/4	100.0	5,140	SSR14672
SS14702	1-8	2 1/2	1 3/4	3 3/16	6 1/8	260.0	9,370	SSR14702

*Blanks have no rated capacity.

Shoulder Pattern

WARNING

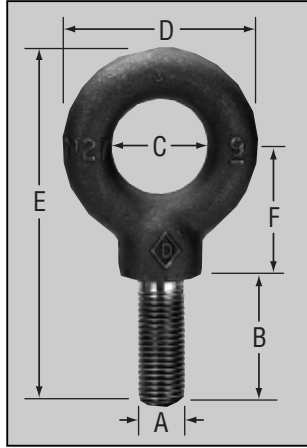
RATED CAPACITY IS DRASTICALLY REDUCED WHEN LOADING AT ANY ANGLE. LOADING MUST NEVER BE MADE AT AN ANGLE GREATER THAN 45° FROM BOLT CENTERLINE. AT AN ANGLE OF 45°, RATED CAPACITY IS REDUCED TO 1/4 OF THE TABULATED VALUE. Reference Page i

To Place an Order or for More Information Please Call
1-800-338-2658 or visit our website at www.ewdaniel.com

Eye Bolts

Metric Eye Bolts

- Forged
- 1030 Carbon Steel
- Self-Colored
- Shoulder Pattern*



Stock No.	Metric Size A	Approx. Equivalent in Inches	Shank Length B in mm	I.D. Eye C	O.D. Eye D	Overall Length E	Center of Eye to Shoulder F	Approx. Wt. Per 100 Pcs.	Rated Capacity in Kgs.
14006M	M6 x 1.0	¼	12	19	30.0	46.9	18.5	4.7	210
14007M	M7 x 1.0	5/16	14	22	36.5	56.9	23.2	9.0	370
14008M	M8 x 1.25	3/8	16	25	43.0	64.8	27.8	15.2	500
14010M	M10 x 1.5	7/16	20	27	46.0	75.5	30.9	23.0	740
14012M	M12 x 1.75	½	24	30	54.0	86.8	34.0	33.0	1,030
14014M	M14 x 2.0	9/16	28	35	65.0	104.2	40.9	63.6	1,600
14016M	M16 x 2.0	5/8	32	35	65.0	108.2	40.9	63.6	1,600
14018M	M18 x 2.5	¾	36	38	71.5	118.3	44.7	96.0	2,140
14020M	M20 x 2.5	7/8	40	41	81.0	135.4	52.5	155.0	2,860
14024M	M24 x 3.0	1	48	46	90.4	152.8	57.1	211.0	3,850
14027M	M27 x 3.0	1 1/8	48	51	103.0	169.3	66.5	323.0	5,200
14030M	M30 x 3.5	1 ¼	60	55	112.7	192.8	72.7	422.0	6,400
14036M	M36 x 4.0	1 ½	72	63	131.8	223.5	81.8	700.0	8,970
14042M	M42 x 4.5	1 5/8	84	73	152.4	263.7	101.6	1080.0	11,960
14045M***	M45 x 4.5	1 ¾	84	73	152.4	263.7	101.6	1150.0	12,720
14048M	M48 x 5.0	1 7/8	96	82	174.6	296.0	111.0	1586.0	16,400
14052M***	M52 x 5.0	2	96	82	174.6	296.0	111.0	1710.0	17,300

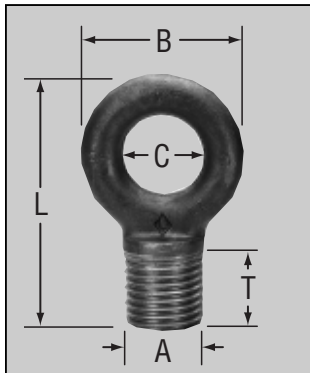
*Plain Pattern available upon request.

All dimensions are in millimeters.

***These products will be discontinued when stock is depleted.

Reduced Eye Bolts

- Forged • 1030 Carbon Steel
- Self-Colored

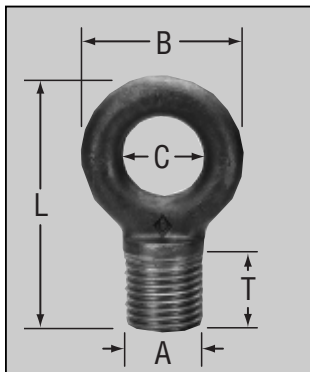


Stock No.	Thread Dia. A	O.D. Eye B	I.D. Eye C	Overall Length L	Thread Length T	Approx. Wt. Per 100 Pcs.	Rated Capacity	Blanks*
13900	1-1/4	2¾	1½	4 ⁵ / ₃₂	7/8 min.	109	8,000	R13900
13905	1-1/2	3½	1 ⁷ / ₈	5 ³ / ₁₆	1 ¹ / ₁₆ min.	216	13,750	R13905
13910	2	4 ¹ / ₈	2 ¹ / ₈	6 ⁹ / ₁₆	1 ⁷ / ₁₆ min.	440	20,000	R13910
13915	2-1/2	4¾	2½	7¾	1 ⁷ / ₈ min.	695	28,000	R13915

Blanks have no rated capacity.

Alloy Reduced Eye Bolts

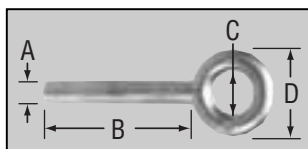
- Forged • 8620 Alloy Steel
- Low Temperature Application



Alloy Reduced Eye Bolts

Stock No.	UNC Thread Dia. A	O.D. Eye B	I.D. Eye C	Overall Length L	Thread Length T	Approx. Wt. Per 100 Pcs.	Calculated Rated Capacity	Blanks*
13900LT	1-1/4	2¾	1½	4 ⁵ / ₃₂	7/8 min.	109	10000	R13900LT
13905LT	1-1/2	3½	1 ⁷ / ₈	5 ³ / ₁₆	1 ¹ / ₁₆ min.	216	17125	R13905LT
13910LT	2	4 ¹ / ₈	2 ¹ / ₈	6 ⁹ / ₁₆	1 ⁷ / ₁₆ min.	440	25000	R13910LT
13915LT	2-1/2	4¾	2½	7¾	1 ⁷ / ₈ min.	695	35000	R13915LT

Eye Bolts & Nut Eye Bolts

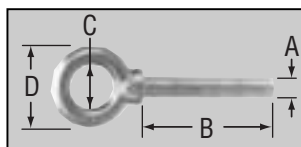


**Plain Pattern
Stainless Steel**
• 316 Stainless Steel

Blanks

Stock No.	Shank Dia. A	Shank Length B	I.D. of Eye C	O.D. of Eye D	Approx. Wt. Per 100 Pcs.
SSR31602	3/8	6	3/4	1 1/2	30
SSR31600	3/8	10	3/4	1 1/2	40
SSR31606	1/2	6	1	1 15/16	42
SSR31605	1/2	12	1	1 15/16	75
SSR31612	5/8	6	1 3/8	2 1/2	98
SSR31610	5/8	12	1 3/8	2 1/2	153
SSR31614	3/4	6	1 1/2	2 13/16	138
SSR31615	3/4	12	1 1/2	2 13/16	216
SSR31617	7/8	12	1 11/16	3 1/4	302
SSR31621	1	6	1 13/16	3 9/16	280
SSR31620	1	12	1 13/16	3 9/16	430

Blanks have no rated capacity.



**Shoulder Pattern
Stainless Steel**
• 316 Stainless Steel

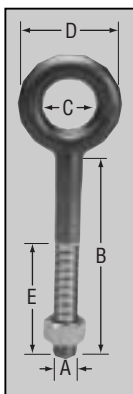
Blanks

Stock No.	Shank Dia. A	Shank Length B	I.D. of Eye C	O.D. of Eye D	Approx. Wt. Per 100 Pcs.
SSR31636	3/8	6	3/4	1 1/2	30
SSR31640	3/8	10	3/4	1 1/2	40
SSR31642	1/2	6	1	1 15/16	42
SSR31645	1/2	12	1	1 15/16	75
SSR31648	5/8	6	1 3/8	2 1/2	98
SSR31650	5/8	12	1 3/8	2 1/2	153
SSR31653	3/4	6	1 1/2	2 13/16	138
SSR31655	3/4	12	1 1/2	2 13/16	216
SSR31657	1	6	1 13/16	3 9/16	280
SSR31660	1	12	1 13/16	3 9/16	430

Blanks have no rated capacity.

Stainless Steel Nut Eye Bolts

- Forged
- 304 Stainless Steel
- Plain Pattern



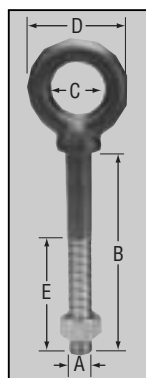
Stock No.	UNC Thread Dia. A	Shank Length B	I.D. of Eye C	O.D. of Eye D	Thread Length E	Approx. Wt. Per 100 Pcs.	Rated Capacity*	Blanks*
SS12314	1/4	4	1/2	1	1	8.0	460	
—	1/4	6	1/2	1	—	9.0	—	SSR12316
SS12323	5/16	4	5/8	1 1/4	1 1/4	15.0	780	
—	3/8	6	3/4	1 1/2	—	29.0	—	SSR12336
SS12341	1/2	4 1/2	1	1 15/16	2	41.0	2,150	
SS12343	1/2	6	1	1 15/16	—	42.0	2,150	SSR12343
—	1/2	12	1	1 15/16	—	55.0	—	SSR12348
SS12350	5/8	4	1 3/8	2 1/2	2 1/4	82.0	3,440	
SS12352	5/8	6	1 3/8	2 1/2	2 1/4	98.0	3,440	SSR12352
—	5/8	12	1 3/8	2 1/2	—	125.0	—	SSR12357
SS12362	3/4	6	1 1/2	2 13/16	2 1/2	138.0	5,140	SSR12362
—	3/4	12	1 1/2	2 13/16	—	175.0	—	SSR12367
SS12371	7/8	6	1 11/16	3 1/4	2 1/2	214.0	7,130	SSR12371
—	7/8	12	1 11/16	3 1/4	—	300.0	—	SSR12375
SS12380	1	6	1 13/16	3 9/16	3	280.0	9,370	SSR12380
—	1	12	1 13/16	3 9/16	—	350.0	—	SSR12385

*Rated capacity — Full sized shank and eye — unaltered.

*Blanks have no rated capacity. All stainless electropolished.

Stainless Steel Nut Eye Bolts

- Forged
- 304 Stainless Steel
- Shoulder Pattern



Stock No.	Thread Dia. A	Shank Length B	I.D. of Eye C	O.D. of Eye D	Thread Length E	Approx. Wt. Per 100 Pcs.	Rated Capacity*	Blanks*
SS17734	3/8-16	4 1/2	3/4	1 1/2	1 1/2	25.0	1,160	SSR17334
—	3/8-16	6	3/4	1 1/2	—	29.0	—	SSR17736
—	3/8-16	10	3/4	1 1/2	—	34.0	—	SSR17739
SS17743	1/2-13	6	1	1 15/16	2	42.0	2,150	SSR17743
—	1/2-13	12	1	1 15/16	—	55.0	—	SSR17745
SS17752	5/8-11	6	1 3/8	2 1/2	2 1/4	98.0	3,440	SSR17752
—	5/8-11	12	1 3/8	2 1/2	—	125.0	—	SSR17754
SS17762	3/4-10	6	1 1/2	2 13/16	2 1/2	138.0	5,140	SSR17762
—	3/4-10	12	1 1/2	2 13/16	—	175.0	—	SSR17767
SS17690	1-8	6	1 13/16	3 9/16	3	280.0	9,370	SSR17690
—	1-8	12	1 13/16	3 9/16	—	350.0	—	SSR17693

*Rated capacity — Full sized shank and eye — unaltered.

*Blanks have no rated capacity.

All stainless electropolished.

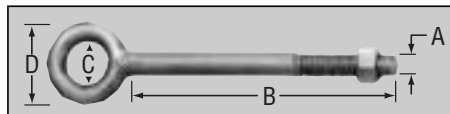
WARNING

RATED CAPACITY IS DRASTICALLY REDUCED WHEN LOADING AT ANY ANGLE. LOADING MUST NEVER BE MADE AT AN ANGLE GREATER THAN 45° FROM BOLT CENTERLINE. AT AN ANGLE OF 45°, RATED CAPACITY IS REDUCED TO 1/4 OF THE TABULATED VALUE. Reference Page i

Eye Bolts

Nut Eye Bolts

- Forged
- 1030 Carbon Steel
- Hot Galvanized**
- Plain Pattern



NUT EYE BOLT SPECIFICATIONS

Length of thread approximately four times the diameter of shank. Shanks 10 inches or longer are threaded 4 inches. Intermediate and longer sizes also available.

1/4" size only, electro-galvanized after threading. All other sizes hot galvanized. Available mechanical galvanized upon request.

All standard stock eye bolts have UNC-2A threads and are supplied with American Standard Galvanized Oversized Hex Nuts (unassembled).

WARNING

RATED CAPACITY IS DRASTICALLY REDUCED WHEN LOADING AT ANY ANGLE. LOADING MUST NEVER BE MADE AT AN ANGLE GREATER THAN 45° FROM BOLT CENTERLINE. AT AN ANGLE OF 45°, RATED CAPACITY IS REDUCED TO 1/4 OF THE TABULATED VALUE. *Reference Page i*

RATED CAPACITY REFERS TO EYE BOLT ONLY. IMPROPER TORQUING, INFERIOR QUALITY NUTS AND OTHER FACTORS CAN SUBSTANTIALLY REDUCE RATED CAPACITY.

Stock No.	Thread Dia. A	Shank Length B	I.D. Eye C	O.D. Eye D	Approx. Wt. Per 100 Pcs.	Rated Capacity	Blanks*
12310	1/4-20	2	1/2	1	6.0	500	
12312	1/4-20	3	1/2	1	7.0	500	
12314	1/4-20	4	1/2	1	8.0	500	
12315***	1/4-20	5	1/2	1	11.0	500	
12316	1/4-20	6	1/2	1	13.0	500	R12316
12319	5/16-18	2 1/4	5/8	1 1/4	11.0	800	
12321	5/16-18	3	5/8	1 1/4	13.0	800	
12323	5/16-18	4	5/8	1 1/4	15.0	800	
12325	5/16-18	5	5/8	1 1/4	17.0	800	
12326	5/16-18	6	5/8	1 1/4	20.0	800	R12326
12330	3/8-16	2 1/2	3/4	1 1/2	17.0	1,200	
12331	3/8-16	3	3/4	1 1/2	21.0	1,200	
12333	3/8-16	4	3/4	1 1/2	24.0	1,200	
12334***	3/8-16	4 1/2	3/4	1 1/2	25.0	1,200	
12335***	3/8-16	5	3/4	1 1/2	27.0	1,200	
12336	3/8-16	6	3/4	1 1/2	30.0	1,200	R12336
12338	3/8-16	8	3/4	1 1/2	36.0	1,200	
12339	3/8-16	10	3/4	1 1/2	40.0	1,200	R12339
12340	1/2-13	3 1/4	1	2	40.0	2,100	
12341	1/2-13	4	1	2	41.0	2,100	
12343	1/2-13	6	1	2	42.0	2,100	R12343
12345	1/2-13	8	1	2	55.0	2,100	
12347	1/2-13	10	1	2	67.0	2,100	
12348	1/2-13	12	1	2	75.0	2,100	R12348
12350	5/8-11	4	1 1/4	2 1/2	82.0	3,200	
12351	5/8-11	5	1 1/4	2 1/2	91.0	3,200	
12352	5/8-11	6	1 1/4	2 1/2	98.0	3,200	R12352
12354	5/8-11	8	1 1/4	2 1/2	120.0	3,200	
12356***	5/8-11	10	1 1/4	2 1/2	134.0	3,200	
12357	5/8-11	12	1 1/4	2 1/2	153.0	3,200	R12357
12358***	5/8-11	15	1 1/4	2 1/2	178.0	3,200	
12360	3/4-10	4	1 1/2	3	118.0	4,500	
12362	3/4-10	6	1 1/2	3	138.0	4,500	R12362
12364	3/4-10	8	1 1/2	3	168.0	4,500	
12366***	3/4-10	10	1 1/2	3	192.0	4,500	
12367	3/4-10	12	1 1/2	3	216.0	4,500	R12367
12368***	3/4-10	15	1 1/2	3	254.0	4,500	
12369***	3/4-10	18	1 1/2	3	304.0	4,500	R12369
12370	7/8-9	5	1 3/4	3 1/2	203.0	7,000	
12371	7/8-9	6	1 3/4	3 1/2	214.0	7,000	R12371
12373	7/8-9	8	1 3/4	3 1/2	235.0	7,000	
12374	7/8-9	10	1 3/4	3 1/2	268.0	7,000	
12375	7/8-9	12	1 3/4	3 1/2	302.0	7,000	R12375
12380	1-8	6	2	4	280.0	8,500	R12380
12382	1-8	8	2	4	335.0	8,500	
12384	1-8	10	2	4	365.0	8,500	
12385	1-8	12	2	4	430.0	8,500	R12385
12386***	1-8	15	2	4	470.0	8,500	
12387	1-8	18	2	4	550.0	8,500	R12387
12390	1-1/4-7	6	2 3/16	4 7/16	500.0	13,500	R12390***
12391***	1-1/4-7	8	2 3/16	4 7/16	580.0	13,500	
12393	1-1/4-7	12	2 3/16	4 7/16	715.0	13,500	R12393
12396	1-1/2-6	12	2 1/2	4 7/16	1080.0	20,000	R12396
12405	2	12	3 1/2	6 7/8	1500.0	35,000	R12396

*Blanks have no rated capacity.

**Self-colored and other finishes available. Call for quote.

Special bolt/thread lengths available. Call for quote.

***These products will be discontinued when stock is depleted.

Eye Bolts

Stock No.	UNC Thread Dia. A	Shank Length B	I.D. Eye C	O.D. Eye	Min. or Std. Thread Length D	Approx. Wt. Per 100 Pcs.	Rated Capacity	Blanks*
15710	1/4	2	1/2	15/16	1	7.7	400	—
15714	1/4	4	1/2	13/16	1	11.3	400	—
15719	5/16	2 1/4	5/8	1 1/4	1 1/4	13.3	800	—
15724	5/16	4 1/4	5/8	1 1/4	1 1/4	17.1	800	—
15730	3/8	2 1/2	3/4	1 7/16	1 1/2	20.5	1,200	—
15734	3/8	4 1/2	3/4	1 1/2	1 1/2	25.6	1,200	—
15738***	3/8	6	3/4	1 1/2	1 1/2	30.0	—	R15738
15740	1/2	3 1/4	1	1 15/16	2	43.8	2,100	—
15741	1/2	4	1	1 15/16	2	48.6	2,100	—
15743	1/2	6	1	1 15/16	2	59.0	2,100	R15743
—	1/2	12	1	1 15/16	2	75.0	—	R15747
—	1/2	18	1	1 15/16	2	110.0	—	R15748
15750	5/8	4	1 3/8	2 1/2	2 1/2	92.0	3,200	—
15752	5/8	6	1 3/8	2 1/2	2 1/2	110.0	3,200	R15752
—	5/8	12	1 3/8	2 1/2	2 1/2	135.0	—	R15754
15760	3/4	4 1/2	1 1/2	3	3	135.0	4,500	—
15762	3/4	6	1 1/2	3	3	153.0	4,500	R15762
—	3/4	12	1 1/2	3	3	216.0	—	R15766
—	3/4	18	1 1/2	3	3	304.0	—	R15769

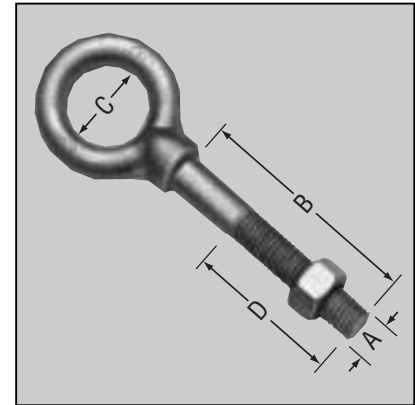
Thread length equals four times the diameter.
1/4" size only. Electro-Galvanized after threading.

*Blanks have no rated capacity.

***These products will be discontinued when stock is depleted.

Nut Eye Bolts

- Forged • Shoulder Pattern
- Hot Galvanized
- 1030 Carbon Steel★



Not recommended for lifting.

Stock No.	Thread Dia. A	Shank Length B	I.D. Eye C	O.D. Eye D	Min. or Std. Thread Length E	Approx. Wt. Per 100 Pcs.	Rated Capacity	Blanks*
17611***	1/4-20	1	1/2	15/16	7/8	4.8	400	—
17621***	5/16-18	1 1/8	5/8	1 3/16	1	9.6	800	—
17629***	3/8-16	1/2	1	1 11/16	3/8	14.1	1,200	—
17630	3/8-16	3/4	1	1 11/16	5/8	15.6	1,200	—
17631***	3/8-16	1 1/4	3/4	1 7/16	1 1/8	14.2	1,200	—
17632	3/8-16	2	3/4	1 7/16	1 7/8	16.3	1,200	—
17633	3/8-16	3 1/2	1	1 21/32	3 3/8	22.7	1,200	—
17640***	1/2-13	1	9/16	1 5/16	7/8	16.9	2,100	—
17641***	1/2-13	1 1/2	1	1 15/16	1 3/8	35.3	2,100	—
17744	1/2-13	1	1 3/16	1 15/16	1	17.5	2,100	—
17642	1/2-13	2 3/16	1 3/16	2 1/16	2 1/16	41.0	2,100	—
17662	5/8-11	2 5/8	1 3/8	2 1/2	2 1/2	78.0	3,200	—
17673	3/4-10	3 1/2	1 1/2	2 13/16	3 3/8	124.0	4,500	—
17685***	1-8	3 1/4	1 13/16	3 9/16	3 1/8	295.0	8,500	—
17690	1-8	6	1 13/16	3 9/16	5 3/4	400.0	8,500	R17690
17693	1-8	12	1 13/16	4 7/16	11 1/2	550.0	8,500	R17693
—	1-8	18	1 13/16	4 7/16	—	780.0	—	R17695
17696	1 1/4-7	6	2 3/16	4 7/16	5 3/4	580.0	13,500	R17696
17699	1 1/4-7	12	2 3/16	4 7/16	11 1/2	760.0	13,500	R17699

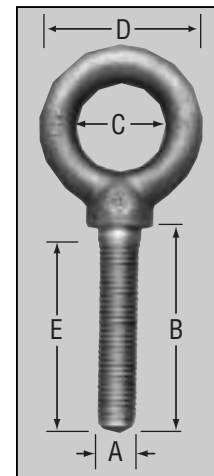
*Blanks have no rated capacity.

**Additional platings available. Call for quote.

***These products will be discontinued when stock is depleted.

Special Sizes

- Forged
- Shoulder Pattern
- Self-Colored**
- 1030 Carbon Steel

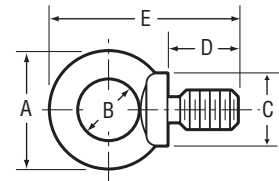


DIN 580/582 Eye Bolts & Nuts & Pad "D" Eyes

Metric Eye Bolts

Manufactured to European Standards

- DIN 580
- 1015 Carbon Steel
- Self-Colored
- Forged



Stock No.	Size	O.D. Eye A	I.D. Eye B	Width of Shoulder C	Shank Length D	Overall Length E	Approx. Wt. Per C in Lbs.	Rated Capacity in Kgs.
58006	6MM	27	15	15	13	27	4.9	70
58008	8MM	36	20	20	13	36	13.2	140
58010	10MM	45	25	25	17	45	24.2	230
58012	12MM	54	30	30	20.5	53	39.6	340
58014	14MM	63	35	35	27	62	55	490
58016	16MM	63	35	35	27	62	61.6	700
58020	20MM	72	40	40	30	71	100	1200
58024	24MM	90	50	50	36	90	162.8	1800
58030	30MM	108	60	65	45	109	365.2	3600
58036	36MM	126	70	75	54	128	583	5100
58042	42MM	144	80	85	63	147	886.6	7000

All dimensions are in millimeters.

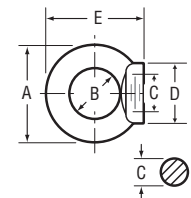
*Zinc Plating Special Order

NOTE: These products are manufactured to Edward W. Daniel Co. quality standards via global contracts.

Metric Eye Nuts

Manufactured to European Standards

- DIN 582
- 1015 Carbon Steel
- Self-Colored
- Forged



Stock No.	Size	O.D. Eye A	I.D. Eye B	Thread Dia. C	Width of Shoulder D	Overall Length E	Approx. Wt. Per C in Kgs.
58208	8MM	36	20	8-1.25	20	36	10.6
58210	10MM	45	25	10-1.5	25	45	19.4
58212	12MM	54	30	12-1.75	30	53	31.7
58214	14MM	54	36	14-2	36	52	38
58216	16MM	63	35	16-2	35	62	49.3
58220	20MM	72	40	20-2.5	40	71	80
58224	24MM	90	50	24-3	50	90	130.3
58230***	30MM	108	60	30-3.5	65	109	292.2

All dimensions are in millimeters.

Rated capacities are same as above when properly installed. (See DIN 580)

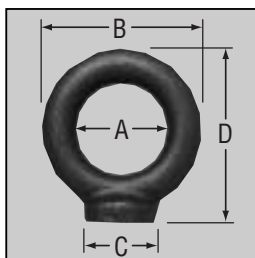
*Zinc Plating Special Order

NOTE: These products are manufactured to Edward W. Daniel Co. quality standards via global contracts.

***These products will be discontinued when stock is depleted.

Pad "D" Eyes

- Forged Carbon Steel
- Self-Colored



Stock No.	I.D. Eye A	O.D. Eye B	Width of Shoulder C	Overall Length D	Approx. Wt. Per 100 Pcs.
41500	3/4	1 1/16	17/32	1 3/8	7.5
41502	7/8	1 7/16	19/32	1 11/16	9.4
41503	1	1 1 1/16	21/32	2	11.0
41504	1 1/16	2 1/8	29/32	2 7/16	16.0
41506	1 3/8	2 9/16	1 1/32	3	56.0
41507	1 1/2	2 13/16	1 3/16	3 1/4	86.0

Not recommended for Lifting.

Hoist Rings

Std. Clevis Part Number	B	Thread Size A	Thread Length C	Inches				Std. H	Long H	Load* Capacity (lbs.)	Torque† (ft. lbs.)	Wt. (lbs.)
				D	E	F	G					
16202	2.67	5/16-18	9/16	.75	.43	.38	1.84	1 1/4	—	800	7	.3
16204	2.67	3/8-16	9/16	.75	.43	.38	1.84	1 1/4	—	1000	12	.3
16208	4.78	1/2-13	3/4	1.50	.88	.75	3.52	2 3/8	4 1/4	2500	28	2.5
16210	4.78	1/2-13	1	1.50	.88	.75	3.52	2 3/8	4 1/4	2500	28	2.5
16212	4.78	1/2-13	1 1/4	1.50	.88	.75	3.52	2 3/8	4 1/4	2500	28	2.5
16215	4.78	5/8-11	1	1.50	.88	.75	3.52	2 1/4	4 3/16	4000	60	2.7
16217	4.78	5/8-11	1 1/4	1.50	.88	.75	3.52	2 1/4	4 3/16	4000	60	2.7
16220	4.78	3/4-10	1	1.50	.88	.75	3.52	2 1/8	4	5000	100	3.0
16221	4.78	3/4-10	1 1/2	1.50	.88	.75	3.52	2 1/8	4	5000	100	3.0
16225	6.52	7/8-9	1	2.31	1.40	1.00	5.14	2 13/16	4 3/8	8000	160	7.0
16227	6.52	7/8-9	1 1/4	2.31	1.40	1.00	5.14	2 13/16	4 3/8	8000	160	7.0
16230	6.52	1-8	1 1/2	2.31	1.40	1.00	5.14	2 11/16	4 3/8	10000	230	7.5
16232	6.52	1-8	2 1/4	2.31	1.40	1.00	5.14	2 11/16	4 3/8	10000	230	7.5
16235	8.73	1 1/4-7	1 3/8	3.19	1.75	1.25	6.50	4 1/4	—	15000	470	14.0
16237	8.73	1 1/4-8	1 3/8	3.19	1.75	1.25	6.50	4 1/4	—	15000	470	14.0
16240	12.47	1 1/2-6	2 3/4	4.19	2.25	1.75	8.55	6 1/2	—	24000	800	33.0
16242	12.47	1 1/2-8	2 3/4	4.19	2.25	1.75	8.55	6 1/2	—	24000	800	33.0
16245	12.47	2-4 1/2	3 3/8	4.19	2.25	1.75	8.55	6 1/8	—	30000	800	36.0
16247	12.47	2-8	3 3/8	4.19	2.25	1.75	8.55	6 1/8	—	30000	800	36.0
16246	16.50	2 1/2-4	4	5.75	3.00	2.25	11.72	8 1/2	—	50000	2100	89.0

* Stated load capacity based on specific thread torques as shown in chart.

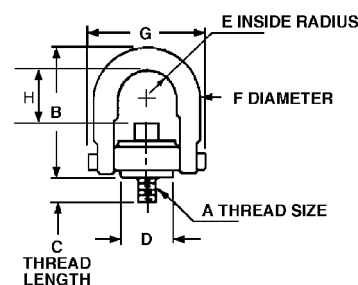
† It is recommended that these torques be used when installing hoist rings.
All dimensions in inches and pounds.

Replacement Bolt Kits available. Call for quote.

Bolt Kit contains bolt and retaining ring. Bolt Kits for Diamond D Hoist Rings available upon request.

Center Pull Style

- Full swivel and pivot action
- Forged
- Alloy steel
- Black oxide body finish with zinc plated gold washer
- Rated at 5:1 strength factor



Std. Clevis Part Number	Thread Size A	B	Thread Length C	D	E	F	G	H	Load* Capacity (Kg.)	Torque† (ft. lbs.)	Wt. (Kg.)
16508M	M8 x 1.25	67.8	12.5	19.0	10.9	9.7	46.7	32.0	400	1.0	.17
16510M	M10 x 1.50	67.8	17.5	19.0	10.9	9.7	46.7	30.0	450	1.7	.17
16512M	M12 x 1.75	121.4	19.0	38.1	22.4	19.0	89.4	60.5	1050	3.8	1.08
16516M	M16 x 2.0	121.4	29.0	38.1	22.4	19.0	89.4	56.5	1900	8.2	1.12
16520M	M20 x 2.5	121.4	34.0	38.1	22.4	19.0	89.4	52.5	2150	13.6	1.19
16524M	M24 x 3.0	165.6	37.0	58.7	35.6	25.4	130.6	69.0	4200	31.0	3.10
16530M	M30 x 3.5	221.7	41.9	81.0	44.5	31.7	165.1	107.4	7000	60.0	6.30
16536M	M36 x 4.0	316.7	63.5	106.4	57.2	44.4	217.2	166.5	11000	100.0	15.50
16542M	M42 x 4.5	316.7	68.0	106.4	57.2	44.4	217.2	160.5	12500	100.0	16.00
16548M	M48 x 5.0	316.7	88.0	106.4	57.2	44.4	217.2	154.5	13500	100.0	16.80

* Stated load capacity based on specific thread torques as shown in chart.

† It is recommended that these torques be used when installing hoist rings.
All dimensions in millimeters and weights in kilograms.

Replacement Bolt Kits available. Call for quote.

Bolt Kit contains bolt and retaining ring. Bolt Kits for Diamond D Hoist Rings available upon request.

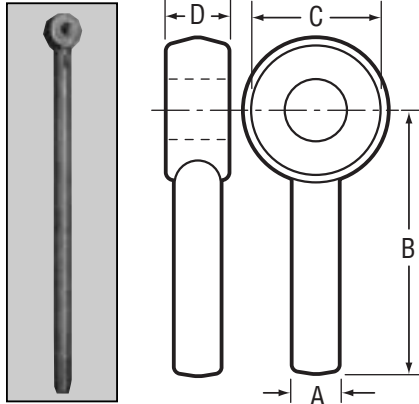
Center Pull Style – Metric

- Full swivel and pivot action
- Alloy steel
- Black oxide body finish with zinc plated gold washer
- Rated at 5:1 strength factor

Rod Ends

Rod Ends

- Forged
- 1030 Carbon Steel & 4140 Alloy*
- Self-Colored



- Shank lengths can vary - $\frac{1}{4} + \frac{1}{2}$
- Standard forging tolerances $\pm \frac{1}{32}$

Self-colored will always be furnished unless otherwise specified.

INFORMATION REQUIRED:

- (A) Shank diameter
- (B) Length center of eye to end
- (C) Head/Boss diameter
- (D) Head thickness

4140 Heat treated to B7

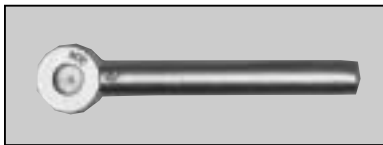
Blanks

1030 Stock No.	4140 Stock No.	Shank Diameter Inches A	Center of Eye to End B	Head Diameter Inches C	Head Thickness Inches D	Approx. Wt. Per 100 Pcs.
R-18004***	—	1/4	1 3/4	1 5/32	5/16	3.5
R-18010***	—	1/4	2	1/2	9/32	4.5
R-18006	—	1/4	2 1/2	1/2	9/32	4.5
R-18022	—	5/16	1 3/4	5/8	1 1/32	14.0
R-18020	—	5/16	4	3/4	5/16	13.0
R-18024***	—	5/16	2	1 3/16	7/16	15.0
R-18048	—	3/8	6	1 1/16	7/16	24.0
—	RA-18048	3/8	6	1 1/16	7/16	24.0
R-18044	—	3/8	12	1 1/16	7/16	—
R-18052***	—	7/16	4 3/8	1 3/16	1/2	45.0
R-18065	—	1/2	6	1 5/16	9/16	45.0
—	RA-18065	1/2	6	1 5/16	9/16	45.0
R-18055***	—	1/2	7	1 5/16	9/16	45.0
R-18070	—	1/2	12	1 5/16	9/16	90.0
—	RA-18070	1/2	12	1 5/16	9/16	90.0
R-18059	—	1/2	18	1 5/16	9/16	98.0
—	RA-18059	1/2	18	1 5/16	9/16	130.0
R-18056***	—	1/2	2 3/4	1 1/16	9/16	40.0
R-18075	—	1/2	6	1 1/8	1/2	36.0
R-18090	—	1/2	18	1 1/8	1/2	102.0
R-18105	—	5/8	6	1 3/16	1 1/16	73.0
—	RA-18105	5/8	6	1 3/16	1 1/16	73.0
R-18110	—	5/8	12	1 3/16	1 1/16	130.0
—	RA-18110	5/8	12	1 3/16	1 1/16	130.0
R-18117	—	5/8	18	1 3/16	1 1/16	172.0
—	RA-18117	5/8	18	1 3/16	1 1/16	185.0
R-18130	—	3/4	6	1 7/16	1 3/16	110.0
—	RA-18130	3/4	6	1 7/16	1 3/16	110.0
R-18135	—	3/4	12	1 7/16	1 3/16	200.0
—	RA-18135***	3/4	12	1 7/16	1 3/16	200.0
R-18137	—	3/4	18	1 7/16	1 3/16	243.0
—	RA-18137	3/4	18	1 7/16	1 3/16	315.0
R-18150	—	7/8	6	1 11/16	1 5/16	159.0
—	RA-18150***	7/8	6	1 11/16	1 5/16	159.0
R-18155	—	7/8	12	1 11/16	1 5/16	265.0
—	RA-18155	7/8	12	1 11/16	1 5/16	265.0
R-18162	—	7/8	18	1 11/16	1 5/16	298.0
R-18170	—	1	6	2	1	213.0
—	RA-18170***	1	6	2	1	213.0
R-18175	—	1	12	2	1	350.0
—	RA-18175	1	12	2	1	350.0
R-18181	—	1	18	2	1	403.0
R-18194	—	1-1/4	12	2 1/2	1 1/4	575.0
R-18200	—	1-1/4	18	2 1/2	1 1/4	625.0
R-18210	—	1-1/2	18	3	1 1/2	650.0
R-18214	—	1-3/4	18	3 1/2	1 3/4	675.0
R-18218	—	2	18	4	2	700.0

*Not heat treated. ***These products will be discontinued when stock is depleted.

Stainless Steel Rod Ends

- Forged
- 304 and 316 Stainless Steel



Blanks

304 Stock No.	316 Stock No.	Shank Diameter Inches A	Center of Eye to End B	Head Diameter Inches C	Head Thickness Inches D	Approx. Wt. Per 100 Pcs.
SSR18050	SSR31670	3/8	6	1 1/16	7/16	25.0
SSR18065	SSR31675	1/2	6	1 5/16	9/16	50.0
SSR18070	SSR31677	1/2	12	1 5/16	9/16	75.0
SSR18105	SSR31680	5/8	6	1 3/16	1 1/16	89.0
SSR18110	SSR31682	5/8	12	1 3/16	1 1/16	153.0
SSR18114	—	5/8	18	1 3/16	1 1/16	200.0
SSR18130	SSR31685	3/4	6	1 7/16	1 3/16	125.0
SSR18135	SSR31687	3/4	12	1 7/16	1 3/16	216.0
SSR18137	SSR31689	3/4	18	1 7/16	1 3/16	304.0
SSR18150	SSR31690	7/8	6	1 11/16	1 5/16	190.0
SSR18155	SSR31692	7/8	12	1 11/16	1 5/16	302.0
SSR18160	—	7/8	18	1 11/16	1 5/16	398.0
SSR18170	SSR31695	1	6	2	1	250.0
SSR18175	SSR31697	1	12	2	1	430.0
SSR18177	—	1	18	2	1	550.0

All stainless electropolished.

Eye Nuts

Eye Nuts

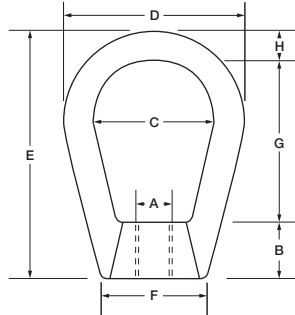
Eye Nuts

- Forged
- 1030 Carbon Steel, Stainless Steel
- Self-Colored, Galvanized* Plated & Electro-Polished
- Quenched & Tempered

Stock No.	*Tap Size A	Bail Size	Thread Length B	I.D. C	O.D. D	Overall Length E	Bell F	I.D. Length G	Ball Thickness H	Shoulder Width I	Rated Capacity (Lbs.)	Approx. Wt. Per 100 Pcs.
16020	3/8	1/2	5/8	1 1/4	1 3/4	2 1/2	1 3/16	1 9/16	3/8	3 1/32	2900	26.0
16021	1/2	1/2	5/8	1 1/4	1 3/4	2 1/2	1 3/16	1 9/16	3/8	3 1/32	3500	31.0
16022	3/8	1	1 1/16	1 1/2	2 1/4	3 3/16	1 3/16	2	1/2	1 3/8	2900	63.0
16023	1/2	1	1 1/16	1 1/2	2 1/4	3 3/16	1 3/16	2	1/2	1 3/8	5200	61.0
16024	5/8	1	1 1/16	1 1/2	2 1/4	3 3/16	1 3/16	2	1/2	1 3/8	5500	59.0
16025	3/4	1	1 1/16	1 1/2	2 1/4	3 3/16	1 3/16	2	1/2	1 3/8	5500	56.0

Ultimate Load is 5 times the Working Load Limit Rating based on standard tap size.

*Additional sizes available. Call for availability. Not recommended for lifting applications.

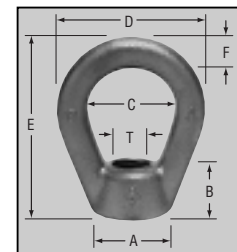


Self-Colored Stock No.	Hot Galvanized Stock No.	Thread Dia. T	A	B	C	D	E	F	Approx. Wt. Per 100 Pcs.	Rated Capacity
16037	16037G	3/8-16	7/8	5/8	1 1/4	2	2 1/2	3/8	22.0	2,700
16050	16050G	1/2-13	7/8	5/8	1 1/4	2	2 1/2	3/8	19.5	2,700
16062	16062G	5/8-11	1 3/8	3/4	1 1/2	2 1/2	3	1/2	60.0	5,000
16075	16075G	3/4-10	1 3/8	3/4	1 1/2	2 1/2	3	1/2	56.0	5,000
16087	16087G	7/8-9	2 1/32	1 11/32	1 5/8	3 3/8	3 31/32	7/8	182.0	10,000
16100	16100G	1-8	2 9/32	1 11/16	1 3/4	3 3/4	4 27/32	1 1/32	280.0	10,000
16125	16125G	1-1/4-7	2 7/8	2	2	4 1/2	5 5/8	1 1/4	625.0	29,400
16150	16150G	1-1/2-6	3 1/8	2 7/32	2 1/2	5 1/4	6 5/8	1 3/8	938.0	35,600

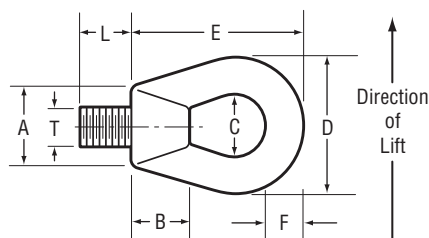
*Zinc plating available, add ZP prefix to part number when ordering.

Eye Nuts

- Forged
- 1030 Carbon Steel
- Self-Colored/ Hot Galvanized*



Stock No.	Thread Dia. T	Thread Length L	A	B	C	D	E	F	Approx. Wt. Per 100 Pcs.	Rated Capacity at 90°
16310	1-8	1 7/8	1 9/16	1 1/16	2 1/4	4	5	7/8	260.0	9,000
16315	1-1/4-7	1 3/4	2 7/8	2	2	4 1/2	5 5/8	1 1/4	640.0	10,000
16320	1-1/2-6	2	3 1/8	2 7/32	2 1/2	5 1/4	6 5/8	1 3/8	900.0	15,000

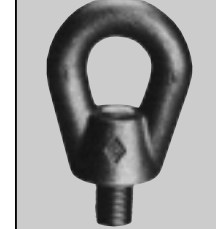


Designed for 90° lifts

MATERIAL: Eye Nut — Carbon Steel, Alloy Stud — 4340 Alloy Steel

FINISH: Self-Colored

SAFETY FACTOR: 5 to 1.



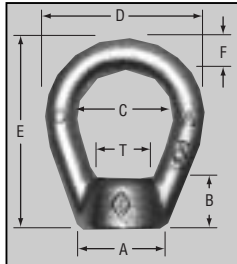
High-Strength Lifting Eyes

Die Lifting Eyes

Eye Nuts

Stainless Steel Eye Nuts

- Forged
- 304 and 316 Stainless Steel



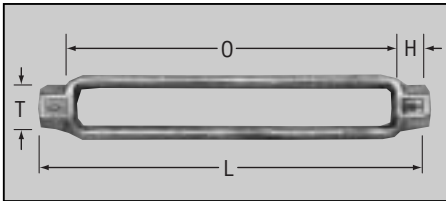
Stock No.	Thread Dia. T	A	B	C	D	E	F	Approx. Wt. Per 100 Pcs.	Rated Capacity
304 Stainless Steel									
SS16037	3/8-16	7/8	5/8	1 1/4	2	2 1/2	3/8	22.0	2,700
SS16050	1/2-13	7/8	5/8	1 1/4	2	2 1/2	3/8	19.5	2,700
SS16062	5/8-11	1 3/8	3/4	1 1/2	2 1/2	3	1/2	60.0	5,000
SS16075	3/4-10	1 3/8	3/4	1 1/2	2 1/2	3	1/2	56.0	5,000
SS16087	7/8-9	2 1/4	1 5/8	1 3/4	3	4	7/8	174.1	10,000
SS16100	1-8	2 1/4	1 5/8	1 3/4	3	4	7/8	167.2	10,000
316 Stainless Steel									
SS16237	3/8-16	7/8	5/8	1 1/4	2	2 1/2	3/8	22.0	2,700
SS16250	1/2-13	7/8	5/8	1 1/4	2	2 1/2	3/8	19.5	2,700
SS16262	5/8-11	1 3/8	3/4	1 1/2	2 1/2	3	1/2	60.0	5,000
SS16275	3/4-10	1 3/8	3/4	1 1/2	2 1/2	3	1/2	56.0	5,000

All stainless electropolished.

Turnbuckles

Turnbuckle Bodies

- Forged
- 1030 Carbon Steel
- Self-Colored/Hot Galvanized*



ASTM F1145-92, Type 1, Grade 1, Class B

NOTE: The galvanized bodies are tapped oversized.

Domestic		Import	Size in Inches		Body Head H	Approx. Length L	Wt. Per 100 Pcs.	Rated Capacity
Self-Colored Stock No.	Hot Galvanized Stock No.	Hot Galvanized Stock No.	Thread Dia. - T	Take-Up - O				
10604	10605	25500	1/4	x 4	7/16	4 7/8	11.0	500
10608	10609	25505	5/16	x 4 1/2	1/2	5 1/2	20.0	800
10612	10613	25510	3/8	x 6	9/16	7 1/8	33.0	1,200
10614	10615	-	1/2	x 3	3/4	4 1/2	30.0	2,200
10616	10617	25515	1/2	x 6	3/4	7 1/2	56.0	2,200
10620	10621	25520	1/2	x 9	3/4	10 1/2	70.0	2,200
10624	10625	25525	1/2	x 12	3/4	13 1/2	104.0	2,200
10626	10627	-	5/8	x 3	7/8	4 3/4	50.0	3,500
10628	10629	25530	5/8	x 6	7/8	7 3/4	85.0	3,500
10632	10633	25535	5/8	x 9	7/8	10 3/4	108.0	3,500
10636	10637	25540	5/8	x 12	7/8	13 3/4	145.0	3,500
10640	10641	25545	3/4	x 6	1 1/16	8 1/8	140.0	5,200
10644	10645	25550	3/4	x 9	1 1/16	11 1/8	186.0	5,200
10648	10649	25555	3/4	x 12	1 1/16	14 1/8	210.0	5,200
10652	10653	25560	3/4	x 18	1 1/16	20 1/8	320.0	5,200
10654	10655	25565	7/8	x 6	1 3/16	8 3/8	160.0	7,200
10656	10657	25570	7/8	x 12	1 3/16	14 3/8	272.0	7,200
10660	10661	25575	7/8	x 18	1 3/16	20 3/8	488.0	7,200
10664	10665	25580	1	x 6	1 3/8	8 3/4	218.0	10,000
10668	10669	25585	1	x 12	1 3/8	14 3/4	358.0	10,000
10672	10673	25590	1	x 18	1 3/8	20 3/4	470.0	10,000
10680	10681	-	1-1/4	x 6	1 3/4	9 1/2	324.0	15,200
10682	10683	-	1-1/4	x 12	1 3/4	9 1/2	324.0	15,200
10686	10687	-	1-3/8	x 6	1 13/16	9 5/8	615.0	17,400
10690	10681	-	1-3/8	x 12	1 7/8	15 3/4	970.0	17,400
10684	10685	-	1-1/2	x 6	2 1/8	10 1/4	590.0	21,400
10694	10695	-	1-1/2	x 12	2 1/8	10 1/4	590.0	21,400
10606	10607	-	1-5/8	x 6	2 1/2	11	980.0	24,500
10610	10611	-	1-5/8	x 12	2 3/4	17 1/2	1525.0	26,000
10688	10689	-	1-3/4	x 6	2 3/8	10 3/4	850.0	27,600
10696	10697	-	1-3/4	x 12	2 3/8	10 3/4	850.0	27,600
10622	10623	-	1-7/8	x 6	2 13/16	11 5/8	1400.0	37,000
10630	10631	-	1-7/8	x 12	2 3/4	17 1/2	1525.0	37,000
10692	10693	-	2	x 6	2 11/16	11 3/8	1280.0	37,500
10634	10635	-	2	x 12	2 3/4	17 1/2	1525.0	37,500
10638	10639	-	2-1/4	x 6	3 1/16	12 5/8	1960.0	48,000
10642	10643	-	2-1/4	x 12	3 13/16	19 5/8	3092.0	48,000
10646	10647	-	2-3/8	x 6	3 3/4	13 1/2	2325.0	52,500
10650	10651	-	2-1/2	x 6	3 3/4	13 1/2	2325.0	60,000
10658	10659	-	2-1/2	x 12	3 3/4	19 1/2	3092.0	60,000

Turnbuckles

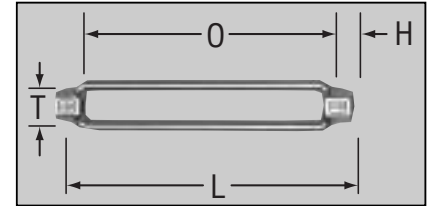
Stock No.	Size in Inches		Head H	Body Length L	Approx. Wt. Per 100 Pcs.	Rated Capacity
	Thread Dia. T	Take-Up O				
SS10612	3/8	x 6	9/16	7 1/8	33.0	1,200
SS10616	1/2	x 6	3/4	7 1/2	56.0	2,200
SS10628	5/8	x 6	7/8	7 3/4	85.0	3,500
SS10640	3/4	x 6	1 1/16	8 1/8	140.0	5,200

All stainless electropolished.

For sizes 1" - 2 1/2" call for price and availability.

Stainless Steel Turnbuckle Bodies

- Forged
- 304 & 316 Stainless Steel

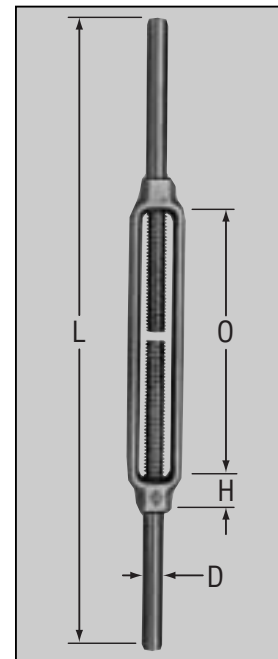


Stock No.	Size in Inches		Head H	Average Overall Length Closed L	Approx. Wt. Per 100 Pcs.	Rated Capacity
	Stub Dia. D	Take-Up O				
10504	1/4	x 4	7/16	9	21.0	500
10508	5/16	x 4 1/2	1/2	11	40.0	800
10512	3/8	x 6	9/16	13	70.0	1,200
10514	1/2	x 3	3/4	11	90.0	2,200
10516	1/2	x 6	3/4	14	125.0	2,200
10520	1/2	x 9	3/4	17	152.0	2,200
10524	1/2	x 12	3/4	20	195.0	2,200
10526	5/8	x 3	7/8	12	145.0	3,500
10528	5/8	x 6	7/8	15	195.0	3,500
10532	5/8	x 9	7/8	18	245.0	3,500
10536	5/8	x 12	7/8	21	300.0	3,500
10540	3/4	x 6	1 1/16	16	320.0	5,200
10544	3/4	x 9	1 1/16	19	390.0	5,200
10548	3/4	x 12	1 1/16	22	440.0	5,200
10554	7/8	x 6	1 3/16	17	430.0	7,200
10556	7/8	x 12	1 3/16	23	570.0	7,200
10564	1	x 6	1 3/8	18	578.0	10,000
10568	1	x 12	1 3/8	24	804.0	10,000
10572	1	x 18	1 3/8	30	1020.0	10,000
10580	1-1/4	x 6	1 3/4	19	930.0	15,200
10584	1-1/2	x 6	2 1/8	20	1530.0	21,400

Safety factor 5 to 1.
ASTM F1145-92, Class C

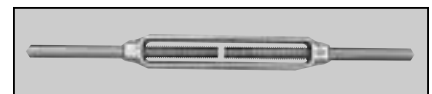
Stub End Turnbuckles

- Forged
- 1030 Carbon Steel
- Self-Colored



Stub End Turnbuckles

- Forged
- 304 Stainless Steel

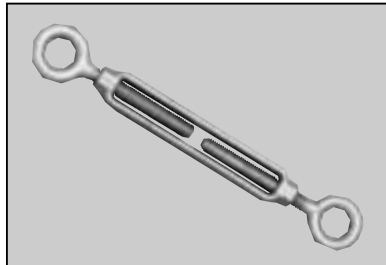


Part No.	Size in Inches		Take-Up	Wt. Per 100 Pcs.
	Approx. Thread Dia.			
SS10512	3/8	x 6	6	70.0
SS10516	1/2	x 6	6	125.0
SS10528	5/8	x 6	6	195.0
SS10540	3/4	x 6	6	320.0

Turnbuckles

Eye & Eye

- Forged
- 1030 Carbon Steel
- Self-Colored/Hot Galvanized



Self-Colored Stock No.	Hot Galvanized Stock No.	Import Hot Galvanized Stock No.	Size in Inches		Average Overall Length Closed	Approx. Wt. Per 100 Pcs.
			Thread Dia.	Take Up		
10004	10704	25000	1/4*	x 4	8 1/4	25.0
10008	10708	25005	5/16	x 4 1/2	9 1/16	44.0
10012	10712	25010	3/8	x 6	11 7/8	79.0
10016	10716	25015	1/2	x 6	13	151.0
10020	10720	-	1/2	x 9	17 1/2	181.0
10024	10724	25025	1/2	x 12	20 1/2	220.0
10028	10728	25030	5/8	x 6	16	250.0
10032	10732	25035	5/8	x 9	19 1/4	300.0
10036	10736	25040	5/8	x 12	21 3/4	360.0
10040	10740	25045	3/4	x 6	17 3/4	390.0
10044	10744	25050	3/4	x 9	20 3/4	460.0
10048	10748	25055	3/4	x 12	23 3/4	530.0
10064	10764	25080	1	x 6	21 1/4	750.0
10068	10768	25085	1	x 12	26 3/8	1000.0

Tapped threads are self-colored.

Galvanized is tapped oversize.

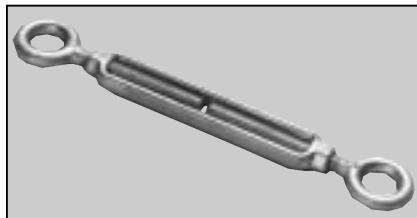
*1/4" size only electro-galvanized.

ASTM F1145-92, Class D

+ Import eyes are in an oval design.

Eye & Eye

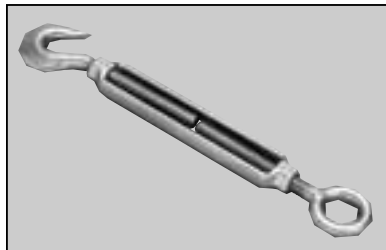
- Forged
- 304 Stainless Steel



Part No.	Size in Inches		Approx. Wt. Per 100 Pcs.
	Thread Dia.	Take-Up	
SS10012	3/8	x 6	79.0
SS10016	1/2	x 6	151.0
SS10028	5/8	x 6	250.0
SS10040	3/4	x 6	390.0

Hook & Eye

- Forged
- 1030 Carbon Steel
- Self-Colored/Hot Galvanized



Domestic Self-Colored Stock No.	Domestic Hot Galvanized Stock No.	Import Hot Galvanized Stock No.	Size in Inches		Average Overall Length Closed	Approx. Wt. Per 100 Pcs.
			Thread Dia.	Take Up		
10104	10804	25100	1/4*	x 4	8 1/4	25.0
10108	10808	25105	5/16	x 4 1/2	9 1/16	44.0
10112	10812	25110	3/8	x 6	11 7/8	79.0
10116	10816	25115	1/2	x 6	13	151.0
10120	10820	25120	1/2	x 9	17 1/2	181.0
10124	10824	25125	1/2	x 12	20 1/2	220.0
10128	10828	25130	5/8	x 6	16	250.0
10132	10832	25135	5/8	x 9	19 1/4	300.0
10136	10836	25140	5/8	x 12	21 3/4	360.0
10140	10840	25145	3/4	x 6	17 3/4	390.0
10144	10844	25150	3/4	x 9	20 3/4	460.0
10148	10848	25155	3/4	x 12	23 3/4	530.0
10152	10852	25160	3/4	x 18	29 3/4	720.0
-	-	25165	7/8	x 6	27 1/4	760.0
10156	10856	25170	7/8	x 12	27 1/4	760.0
10160	10860	25175	7/8	x 18	33 1/4	1060.0
10164	10864	25180	1	x 6	21 1/4	750.0
10168	10868	25185	1	x 12	26 3/8	1000.0
10172	10872	25190	1	x 18	32 1/2	1222.0

Galvanized is tapped oversize.

ASTM F1145-92, Class F

Turnbuckles

Domestic Self-Colored Stock No.	Domestic Hot Overall Galvanized Stock No.	Import Hot Galvanized Stock No.	Size in Inches		Length Closed	Wt. Per 100 Pcs.
			Approx. Thread Dia.	Average Take Up		
10204	10904	25200	1/4*	x	4	25.0
10208	10908	25205	5/16	x	4½	44.0
10212	10912	25210	3/8	x	6	79.0
10216	10916	25215	1/2	x	6	151.0
10220	10920	25220	1/2	x	9	181.0
10224	10924	25225	1/2	x	12	220.0
10228***	10928***	25230	5/8	x	6	250.0
10232***	10932***	25235	5/8	x	9	300.0
10236***	10936***	25240	5/8	x	12	360.0
10240***	10940***	25245	3/4	x	6	390.0
10244***	10944***	25250	3/4	x	9	460.0
10248***	10948***	25255	3/4	x	12	530.0
10252***	10952***	25260	3/4	x	18	720.0
-	-	25265	7/8	x	6	760.0
10256***	10956***	25270	7/8	x	12	760.0
10260***	10960***	25275	7/8	x	18	1060.0
10264***	10964***	25280	1	x	6	750.0
10268***	10968***	25285	1	x	12	1000.0
10272***	10972***	25290	1	x	18	1222.0

*1/4" size only electro-galvanized.

Tapped threads are self-colored.

Galvanized is tapped oversize.

ASTM F1145-92, Class E

***These products will be discontinued when stock is depleted.

Domestic Part No.	Import Part No.**	Size in Inches		Average Overall Length Closed	Approx. Wt. Per 100 Pcs.
		Thread Dia.	Take-Up		
11004	25300	1/4*	x	4	26.0
11008	25305	5/16	x	4½	45.0
11012	25310	3/8	x	6	78.0
11016	25315	1/2	x	6	151.0
11020	25320	1/2	x	9	179.0
11024	25325	1/2	x	12	220.0
11028	25330	5/8	x	6	253.0
11032	25335	5/8	x	9	299.0
11036	25340	5/8	x	12	368.0
11040	25345	3/4	x	6	414.0
11044	25350	3/4	x	9	458.0
11048	25355	3/4	x	12	532.0
-	25360	3/4	x	18	805.0
-	25365	7/8	x	6	805.0
-	25370	7/8	x	12	805.0
-	25375	7/8	x	18	805.0
11064	25380	1	x	6	805.0
-	25385	1	x	12	805.0
-	25390	1	x	18	805.0

*1/4" size only electro-galvanized.

Galvanized is tapped oversize.

Tapped threads are self-colored.

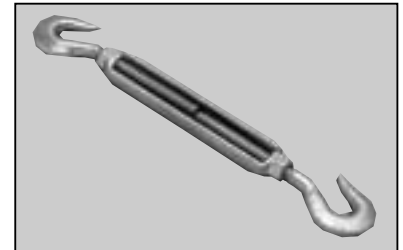
**These products use a hex head bolt with nut instead of a clevis bolt with pin.

Part No.	Thread Dia.	Take-Up	Average Overall Length Closed	Approx. Wt. Per 100 Pcs.
SS11012	3/8	x	6	78.0
SS11016	1/2	x	6	151.0
SS11028	5/8	x	6	253.0
SS11040	3/4	x	6	414.0

All stainless electropolished.

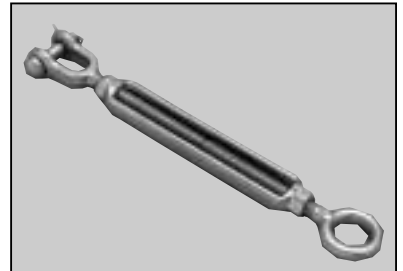
Hook & Hook

- Forged
- 1030 Carbon Steel
- Self-Colored/Hot Galvanized



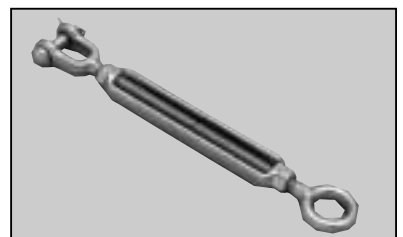
Jaw & Eye

- Forged
- 1030 Carbon Steel
- Hot Galvanized



Jaw & Eye

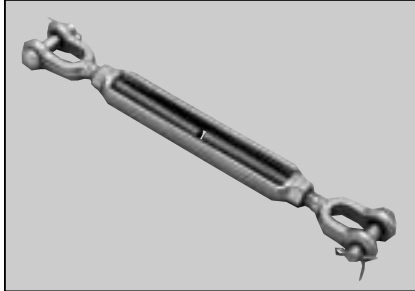
- Forged
- 304 Stainless Steel



Turnbuckles

Jaw & Jaw

- Forged
- 1030 Carbon Steel
- Hot Galvanized



Part No.	Import Part No.**	Size in Inches			Average Overall Length Closed	Approx. Wt. Per 100 Pcs.
		Thread Dia.		Take-Up		
11104	25400	1/4*	x	4	8	28.0
11108	25405	5/16	x	4½	9	49.0
11112	25410	3/8	x	6	12	85.0
11116	25415	1/2	x	6	13	164.0
11120	25420	1/2	x	9	16	195.0
11124	25425	1/2	x	12	19	240.0
11128	25430	5/8	x	6	16	275.0
-	25435	5/8	x	9	16	275.0
11136	25440	5/8	x	12	22	400.0
11140	25445	3/4	x	6	17	450.0
11144	25450	3/4	x	9	20	498.0
11148	25455	3/4	x	12	23	578.0
11152	25460	3/4	x	18	29	760.0
-	25465	7/8	x	6	16	275.0
-	25470	7/8	x	12	16	275.0
-	25475	7/8	x	18	16	275.0
11164	25480	1	x	6	18	920.0
11168	25485	1	x	12	24	1210.0
11172	25490	1	x	18	36	1420.0

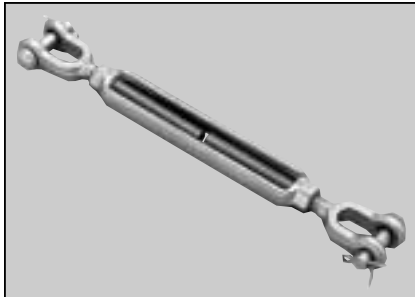
*1/4" size only electro-galvanized.

Galvanized is tapped oversize.

**These products use a hex head bolt with nut instead of a clevis bolt with pin.

Jaw & Jaw

- Forged
- 304 Stainless Steel



Part No.	Size in Inches			Approx. Wt. Per 100 Pcs.
	Thread Dia.		Take-Up	
SS11112	3/8	x	6	85.0
SS11116	1/2	x	6	164.0
SS11128	5/8	x	6	275.0
SS11140	3/4	x	6	450.0

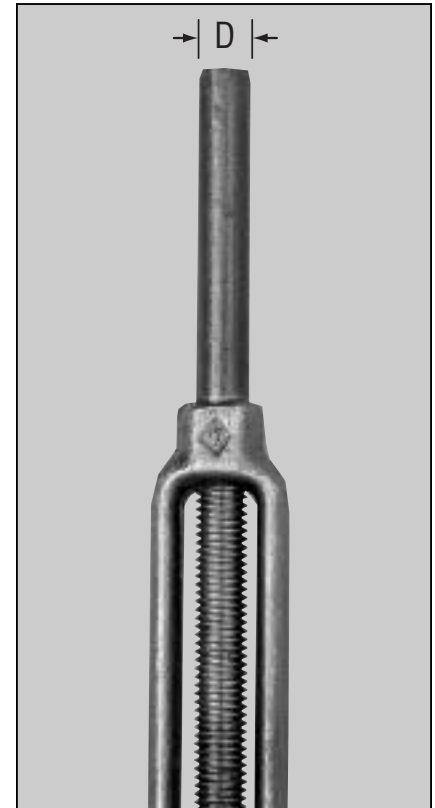
All stainless electropolished.

Turnbuckle Fittings

Self- Colored Stock No.	Size in Inches		Thread	Stub Length S	Thread Length T	Approx. Wt. Per 100 Pcs.	Rated Capacity
	Thread Dia.-D	Take- Up					
10502	1/4	x 4	RH	4 1/2	2 1/2	5.0	500
10503	1/4	x 4	LH	4 1/2	2 1/2	5.0	500
10506	5/16	x 4 1/2	RH	5 1/4	2 3/4	10.0	800
10507	5/16	x 4 1/2	LH	5 1/4	2 3/4	10.0	800
10510	3/8	x 6	RH	6 1/2	3 5/8	19.0	1,200
10511	3/8	x 6	LH	6 1/2	3 5/8	19.0	1,200
10513	1/2	x 3	RH	5 1/2	2 3/8	30.0	2,200
10515	1/2	x 3	LH	5 1/2	2 3/8	30.0	2,200
10517	1/2	x 6	RH	7	3 3/4	35.0	2,200
10518	1/2	x 6	LH	7	3 3/4	35.0	2,200
10519	1/2	x 9	RH	8 1/2	5 1/4	41.0	2,200
10521	1/2	x 9	LH	8 1/2	5 1/4	41.0	2,200
10522	1/2	x 12	RH	10	6 3/4	46.0	2,200
10523	1/2	x 12	LH	10	6 3/4	46.0	2,200
10529	5/8	x 6	RH	7 1/2	4	55.0	3,500
10530	5/8	x 6	LH	7 1/2	4	55.0	3,500
10533	5/8	x 9	RH	9	5 5/8	69.0	3,500
10534	5/8	x 9	LH	9	5 5/8	69.0	3,500
10537	5/8	x 12	RH	10 1/2	7	78.0	3,500
10538	5/8	x 12	LH	10 1/2	7	78.0	3,500
10541	3/4	x 6	RH	8	4 1/8	90.0	5,200
10542	3/4	x 6	LH	8	4 1/8	90.0	5,200
10545	3/4	x 9	RH	9 1/4	5 5/8	102.0	5,200
10546	3/4	x 9	LH	9 1/4	5 5/8	102.0	5,200
10547	3/4	x 12	RH	10 3/4	7 1/8	115.0	5,200
10549	3/4	x 12	LH	10 3/4	7 1/8	115.0	5,200
10550	3/4	x 18	RH	13 3/4	10 1/8	148.0	5,200
10551	3/4	x 18	LH	13 3/4	10 1/8	148.0	5,200
10553	7/8	x 6	RH	8 1/2	4 3/8	135.0	7,200
10555	7/8	x 6	LH	8 1/2	4 3/8	135.0	7,200
10557	7/8	x 12	RH	11 1/4	7 1/2	149.0	7,200
10558	7/8	x 12	LH	11 1/4	7 1/2	149.0	7,200
10561	7/8	x 18	RH	14 1/4	10 3/8	210.0	7,200
10562	7/8	x 18	LH	14 1/4	10 3/8	210.0	7,200
10565	1	x 6	RH	9	4 1/2	180.0	10,000
10566	1	x 6	LH	9	4 1/2	180.0	10,000
10569	1	x 12	RH	11 1/2	7 1/2	223.0	10,000
10570	1	x 12	LH	11 1/2	7 1/2	223.0	10,000
10573	1	x 18	RH	14 1/2	10 1/2	275.0	10,000
10574	1	x 18	LH	14 1/2	10 1/2	275.0	10,000
10577	1-1/8	x 6	RH	9 1/4	4 3/4	240.0	12,400
10578	1-1/8	x 6	LH	9 1/4	4 3/4	240.0	12,400
10581	1-1/4	x 6	RH	9 1/2	5	303.0	15,200
10582	1-1/4	x 6	LH	9 1/2	5	303.0	15,200
10585	1-1/2	x 6	RH	9 1/2	5 1/2	470.0	21,400
10586	1-1/2	x 6	LH	9 1/2	5 1/2	470.0	21,400

Stub Ends

- Forged
- 1030 Carbon Steel



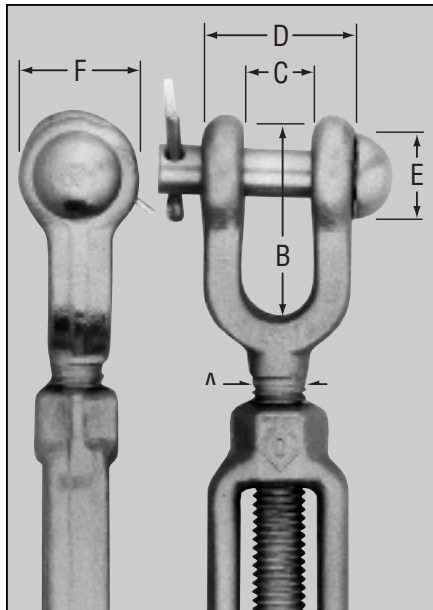
Safety factor 5 to 1.

NOTE: Also available in stainless steel and HD galvanized. Call for quote.

Turnbuckle Fittings

Jaws

- Forged
- 1030 Carbon Steel



Hot Galvanized Stock No.	Size in Inches		B	C	D	E	F	Shank Length	Thread	Wt. Per 100 Pcs.	Approx. Rated Capacity
	Thread Dia.-A	Take-Up									
11105	1/4	x 4	1.12	.45	.90	.30	.63	3	RH	9.0	500
11106	1/4	x 4	1.12	.45	.90	.30	.63	3	LH	9.0	500
11109	5/16	x 4½	1.39	.50	1.00	.30	.69	3	RH	15.0	800
11110	5/16	x 4½	1.39	.50	1.00	.30	.69	3	LH	15.0	800
11113	3/8	x 6	1.49	.54	1.08	.36	.81	4	RH	26.0	1,200
11114	3/8	x 6	1.49	.54	1.08	.36	.81	4	LH	26.0	1,200
11117	1/2	x 6	1.81	.55	1.43	.42	1.00	4	RH	54.0	2,100
11118	1/2	x 6	1.81	.55	1.43	.42	1.00	4	LH	54.0	2,100
11121	1/2	x 9	1.81	.55	1.43	.42	1.00	6¼	RH	63.0	2,100
11122	1/2	x 9	1.81	.55	1.43	.42	1.00	6¼	LH	63.0	2,100
11125	1/2	x 12	1.81	.55	1.43	.42	1.00	7¾	RH	68.0	2,100
11126	1/2	x 12	1.81	.55	1.43	.42	1.00	7¾	LH	68.0	2,100
11129	5/8	x 6	2.35	.82	1.68	.55	1.31	5	RH	95.0	3,200
11130	5/8	x 6	2.35	.82	1.68	.55	1.31	5	LH	95.0	3,200
11133	5/8	x 9	2.35	.82	1.68	.55	1.31	6½	RH	109.0	3,200
11134	5/8	x 9	2.35	.82	1.68	.55	1.31	6½	LH	109.0	3,200
11137	5/8	x 12	2.35	.82	1.68	.55	1.31	8½	RH	128.0	3,200
11138	5/8	x 12	2.35	.82	1.68	.55	1.31	8½	LH	128.0	3,200
11141	3/4	x 6	2.80	1.03	1.97	.69	1.62	5½	RH	155.0	5,000
11142	3/4	x 6	2.80	1.03	1.97	.69	1.62	5½	LH	155.0	5,000
11145	3/4	x 9	2.80	1.03	1.97	.69	1.62	6½	RH	156.0	5,000
11146	3/4	x 9	2.80	1.03	1.97	.69	1.62	6½	LH	156.0	5,000
11149	3/4	x 12	2.80	1.03	1.97	.69	1.62	8½	RH	184.0	5,000
11150	3/4	x 12	2.80	1.03	1.97	.69	1.62	8½	LH	184.0	5,000
11153	3/4	x 18	2.80	1.03	1.97	.69	1.62	11½	RH	220.0	5,000
11154	3/4	x 18	2.80	1.03	1.97	.69	1.62	11½	LH	220.0	5,000
11157	7/8	x 12	3.23	1.23	2.43	.81	1.88	9	RH	302.0	7,000
11158	7/8	x 12	3.23	1.23	2.43	.81	1.88	9	LH	302.0	7,000
11161	7/8	x 18	3.23	1.23	2.43	.81	1.88	12	RH	329.0	7,000
11162	7/8	x 18	3.23	1.23	2.43	.81	1.88	12	LH	329.0	7,000
11165	1	x 6	3.73	1.31	2.63	.94	2.12	5½	RH	351.0	10,000
11166	1	x 6	3.73	1.31	2.63	.94	2.12	5½	LH	351.0	10,000
11169	1	x 12	3.73	1.31	2.63	.94	2.12	8½	RH	426.0	10,000
11170	1	x 12	3.73	1.31	2.63	.94	2.12	8½	LH	426.0	10,000
11173	1	x 18	3.73	1.31	2.63	.94	2.12	11¼	RH	475.0	10,000
11174	1	x 18	3.73	1.31	2.63	.94	2.12	11¼	LH	475.0	10,000

Safety factor 5 to 1.

NOTE: Also available in self-colored and stainless steel, call for quote.

Other services provided by the Edward W. Daniel LLC include:

- Private label packaging
- Special forgings
- Special steel requirements
- Custom finishes
- Inventory management programs
- Modified sizes

Turnbuckle Fittings

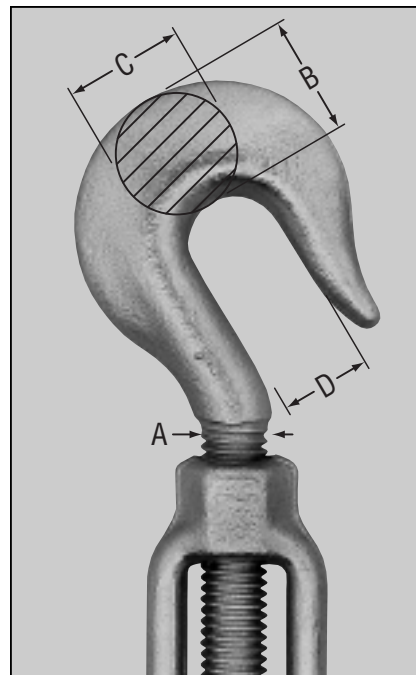
Self- Colored Stock No.***	Hot Galvanized Stock No.***	Size in Inches				B	C	D	Shank Length	Thread	Approx. Wt. Per 100 Pcs.	Rated Capacity
		Thread Dia.-A	Take- Up									
10205	10905	1/4	x 4	.25	.41	.45	3	RH	7.0	300		
10206	10906	1/4	x 4	.25	.41	.45	3	LH	7.0	300		
10209	10909	5/16	x 4½	.31	.50	.50	3	RH	12.0	500		
10210	10910	5/16	x 4½	.31	.50	.50	3	LH	12.0	500		
10213	10913	3/8	x 6	.38	.61	.56	4	RH	23.0	700		
10214	10914	3/8	x 6	.38	.61	.56	4	LH	23.0	700		
10217	10917	1/2	x 6	.50	.78	.66	4	RH	48.0	1,040		
10218	10918	1/2	x 6	.50	.78	.66	4	LH	48.0	1,040		
10221	10921	1/2	x 9	.50	.78	.66	6¼	RH	56.0	1,040		
10222	10922	1/2	x 9	.50	.78	.66	6¼	LH	56.0	1,040		
10225	10925	1/2	x 12	.50	.78	.66	7¾	RH	58.0	1,040		
10226	10926	1/2	x 12	.50	.78	.66	7¾	LH	58.0	1,040		
10229***	10929***	5/8	x 6	.63	1	.90	5	RH	83.0	1,600		
10230***	10930***	5/8	x 6	.63	1	.90	5	LH	83.0	1,600		
10233***	10933***	5/8	x 9	.63	1	.90	6½	RH	96.0	1,600		
10234***	10934***	5/8	x 9	.63	1	.90	6½	LH	96.0	1,600		
10237***	10937***	5/8	x 12	.63	1	.84	8½	RH	108.0	1,600		
10238***	10938***	5/8	x 12	.63	1	.84	8½	LH	108.0	1,600		
10241***	10941***	3/4	x 6	.75	1.20	.98	5½	RH	125.0	2,000		
10242***	10942***	3/4	x 6	.75	1.20	.98	5½	LH	125.0	2,000		
10245***	10945***	3/4	x 9	.75	1.20	.98	6½	RH	137.0	2,000		
10246***	10946***	3/4	x 9	.75	1.20	.98	6½	LH	137.0	2,000		
10249***	10949***	3/4	x 12	.75	1.20	.98	8½	RH	160.0	2,000		
10250***	10950***	3/4	x 12	.75	1.20	.98	8½	LH	160.0	2,000		
10253***	10953***	3/4	x 18	.75	1.20	.98	11½	RH	200.0	2,000		
10254***	10954***	3/4	x 18	.75	1.20	.98	11½	LH	200.0	2,000		
10257***	10957***	7/8	x 12	.88	1.38	1.13	9	RH	244.0	2,400		
10258***	10958***	7/8	x 12	.88	1.38	1.13	9	LH	244.0	2,400		
10261***	10961***	7/8	x 18	.88	1.38	1.13	12	RH	286.0	2,400		
10262***	10962***	7/8	x 18	.88	1.38	1.13	12	LH	286.0	2,400		
10265***	10965***	1	x 6	1	1.53	1.25	5½	RH	266.0	2,900		
10266***	10966***	1	x 6	1	1.53	1.25	5½	LH	266.0	2,900		
10269***	10969***	1	x 12	1	1.53	1.25	8½	RH	321.0	2,900		
10270***	10970***	1	x 12	1	1.53	1.25	8½	LH	321.0	2,900		
10273***	10973***	1	x 18	1	1.53	1.25	11¼	RH	376.0	2,900		
10274***	10974***	1	x 18	1	1.53	1.25	11¼	LH	376.0	2,900		

Safety factor 5 to 1.

***These sizes will be discontinued when stock is depleted.

Hooks

- Forged
- 1030 Carbon Steel



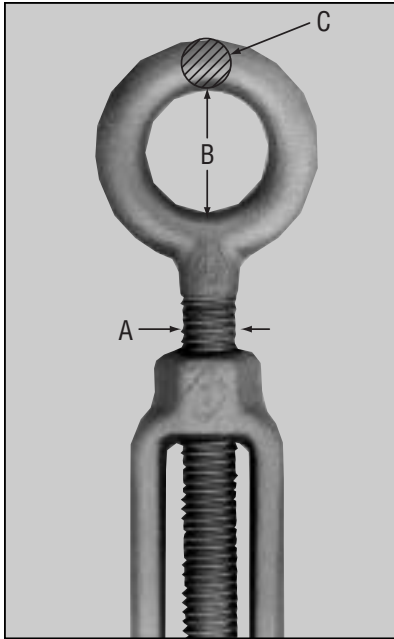
Other services provided by the Edward W. Daniel LLC include:

- Private label packaging
- Special forgings
- Special steel requirements
- Custom finishes
- Inventory management programs
- Modified sizes

Turnbuckle Fittings

Round Eyes

- Forged
- 1030 Carbon Steel



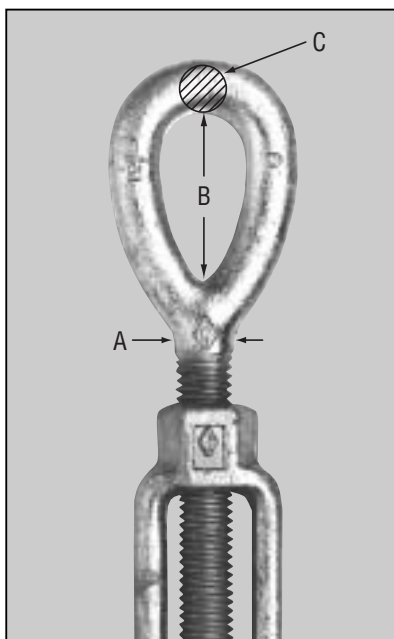
Self- Colored Stock No.	Hot Galvanized Stock No.	Size in Inches			B	C	Shank Length	Thread	Approx. Wt. Per 100 Pcs.	Rated Capacity
		Thread Dia.-A	Take- Up							
10005	10705	1/4	x 4	1/2	1/4	3	RH	7.0	500	
10006	10706	1/4	x 4	1/2	1/4	3	LH	7.0	500	
10009	10709	5/16	x 4 1/2	5/8	5/16	3	RH	12.0	800	
10010	10710	5/16	x 4 1/2	5/8	5/16	3	LH	12.0	800	
10013	10713	3/8	x 6	3/4	3/8	4	RH	23.0	1,200	
10014	10714	3/8	x 6	3/4	3/8	4	LH	23.0	1,200	
10017	10717	1/2	x 6	1	7/16	4	RH	48.0	2,100	
10018	10718	1/2	x 6	1	7/16	4	LH	48.0	2,100	
10021	10721	1/2	x 9	1	7/16	6 1/4	RH	56.0	2,100	
10022	10722	1/2	x 9	1	7/16	6 1/4	LH	56.0	2,100	
10025	10725	1/2	x 12	1	7/16	7 3/4	RH	58.0	2,100	
10026	10726	1/2	x 12	1	7/16	7 3/4	LH	58.0	2,100	
10029	10729	5/8	x 6	1 3/8	9/16	5	RH	83.0	3,200	
10030	10730	5/8	x 6	1 3/8	9/16	5	LH	83.0	3,200	
10033	10733	5/8	x 9	1 3/8	9/16	6 5/8	RH	96.0	3,200	
10034	10734	5/8	x 9	1 3/8	9/16	6 5/8	LH	96.0	3,200	
10037	10737	5/8	x 12	1 3/8	9/16	8	RH	108.0	3,200	
10038	10738	5/8	x 12	1 3/8	9/16	8	LH	108.0	3,200	
10041	10741	3/4	x 6	1 1/2	2 1/32	5 1/8	RH	125.0	5,000	
10042	10742	3/4	x 6	1 1/2	2 1/32	5 1/8	LH	125.0	5,000	
10045	10745	3/4	x 9	1 1/2	2 1/32	6 5/8	RH	137.0	5,000	
10046	10746	3/4	x 9	1 1/2	2 1/32	6 5/8	LH	137.0	5,000	
10049	10749	3/4	x 12	1 1/2	2 1/32	8	RH	160.0	5,000	
10050	10750	3/4	x 12	1 1/2	2 1/32	8	LH	160.0	5,000	
10057	-	7/8	x 12	1 11/16	3/4	9	RH	244.0	7,000	
10058	-	7/8	x 12	1 11/16	3/4	9	LH	244.0	7,000	
10061	10761	7/8	x 18	1 11/16	3/4	12	RH	286.0	7,000	
10062	10762	7/8	x 18	1 11/16	3/4	12	LH	286.0	7,000	
10065	10765	1	x 6	1 13/16	7/8	5 5/8	RH	266.0	10,000	
10066	10766	1	x 6	1 13/16	7/8	5 5/8	LH	266.0	10,000	
10069	10769	1	x 12	1 13/16	7/8	8 1/2	RH	321.0	10,000	
10070	10770	1	x 12	1 13/16	7/8	8 1/2	LH	321.0	10,000	

Safety factor 5 to 1.

NOTE: Also available in stainless steel. Call for quote.

Oval Eyes

- Forged
- 1030 Carbon Steel



Hot Galvanized Stock No.	Size in Inches			B	C	Shank Length	Thread	Wt. Per 100 Pcs.	Approx. Rated Capacity
	Thread Dia.-A	Take- Up							
11705***	1/4	x 4	25/32	7/32	3	RH	7.0	500	
11706***	1/4	x 4	25/32	7/32	3	LH	7.0	500	
11710***	5/16	x 4	5/8	5/16	3	LH	12.0	800	
11713***	3/8	x 6	1 1/8	3/8	4	RH	23.0	1,200	
11714***	3/8	x 6	1 1/8	3/8	4	LH	23.0	1,200	
11725***	3/8	x 12	1	7/16	7	RH	58.0	2,100	
11730***	5/8	x 6	1 3/8	9/16	5	LH	83.0	3,200	
11734***	5/8	x 9	1 3/8	9/16	6 5/8	LH	96.0	3,200	
11737***	5/8	x 12	1 3/8	9/16	8	RH	108.0	3,200	
11738***	5/8	x 12	1 3/8	9/16	8	LH	108.0	3,200	
11746***	3/4	x 9	1	2 1/32	6 5/8	LH	137.0	5,000	
11754***	3/4	x 12	1	2 1/32	8	LH	160.0	5,000	
11758***	7/8	x 12	1 11/16	3/4	9	LH	244.0	7,000	
11765***	1	x 6	1 13/16	7/8	5 5/8	RH	266.0	10,000	
11766***	1	x 6	1 13/16	7/8	5 5/8	LH	266.0	10,000	
11769***	1	x 12	1 13/16	7/8	8	RH	321.0	10,000	
11770***	1	x 12	1 13/16	7/8	8	LH	321.0	10,000	

***These products will be discontinued when stock is depleted.

Anchor Shackles

Self- Colored Stock No.	Hot Galvanized Stock No.	Nominal Shackle Size	Inside Length A	Inside Width		Diameter Pin D	Approx. Wt. Per 100 Pcs.	Rated Capacity Load Lbs.
				At Pin B	At Bow C			
—	19100	3/16*	7/8	3/8	1 ¹ / ₁₆	1/4	6.5	667
19005	19105	1/4	1 ¹ / ₈	1/2	2 ⁵ / ₃₂	5/16	11.5	1,000
19010	19110	5/16	1 ⁷ / ₃₂	1 ⁷ / ₃₂	2 ⁷ / ₃₂	3/8	18.4	1,500
19015	19115	3/8	1 ⁷ / ₁₆	2 ¹ / ₃₂	1 ¹ / ₃₂	7/16	31.5	2,000
19020	19120	7/16	1 ¹¹ / ₁₆	2 ³ / ₃₂	1 ⁵ / ₃₂	1/2	44.6	3,000
19025	19125	1/2	1 ⁷ / ₈	1 ³ / ₁₆	1 ⁵ / ₁₆	5/8	74.5	4,000
19030	19130	5/8	2 ³ / ₈	1 ¹ / ₁₆	1 ¹¹ / ₁₆	3/4	136.4	6,500
19035	19135	3/4	2 ¹³ / ₁₆	1 ¹ / ₄	2	7/8	213.5	9,500
19040***	19140	7/8	3 ⁵ / ₁₆	1 ⁷ / ₁₆	2 ⁹ / ₃₂	1	345.5	13,000
19045	19145	1	3 ³ / ₄	1 ¹¹ / ₁₆	2 ¹¹ / ₁₆	1 ¹ / ₈	500.0	17,000
19050***	19150	1-1/8	4 ¹ / ₄	1 ¹³ / ₁₆	2 ²⁹ / ₃₂	1 ¹ / ₄	709.0	19,000
19055***	19155	1-1/4	4 ¹¹ / ₁₆	2 ¹ / ₃₂	3 ¹ / ₄	1 ³ / ₈	991.0	24,000
19060***	19160***	1-3/8	5 ³ / ₁₆	2 ¹ / ₄	3 ¹ / ₂	1 ¹ / ₂	1328.0	27,000
19065***	19165	1-1/2	5 ³ / ₄	2 ³ / ₈	3 ³ / ₈	1 ⁵ / ₈	1690.0	34,000

***These products will be discontinued when stock is depleted.

NOTE: These products are manufactured to Edward W. Daniel Co. quality standards via global contracts.

Hot Galvanized Stock No.	Nominal Shackle Size	Inside Length A	Inside Width		Diameter Pin D	Approx. Wt. Per 100 Pcs.	Rated Capacity Load Lbs.
			At Pin B	At Bow C			
19405	1/4	1 ¹ / ₈	1/2	2 ⁵ / ₃₂	5/16	11.5	1,000
19410	5/16	1 ⁷ / ₃₂	1 ⁷ / ₃₂	2 ⁷ / ₃₂	3/8	18.4	1,500
19415	3/8	1 ⁷ / ₁₆	2 ¹ / ₃₂	1 ¹ / ₃₂	7/16	31.5	2,000
19420	7/16	1 ¹¹ / ₁₆	2 ³ / ₃₂	1 ⁵ / ₃₂	1/2	44.6	3,000
19425	1/2	1 ⁷ / ₈	1 ³ / ₁₆	1 ⁵ / ₁₆	5/8	74.5	4,000
19430	5/8	2 ³ / ₈	1 ¹ / ₁₆	1 ¹¹ / ₁₆	3/4	136.4	6,500
19435	3/4	2 ¹³ / ₁₆	1 ¹ / ₄	2	7/8	213.5	9,500
19440	7/8	3 ⁵ / ₁₆	1 ⁷ / ₁₆	2 ⁹ / ₃₂	1	345.5	13,000
19445	1	3 ³ / ₄	1 ¹¹ / ₁₆	2 ¹¹ / ₁₆	1 ¹ / ₈	500.0	17,000

Self- Colored Stock No.	Hot Galvanized Stock No.	Nominal Shackle Size	Inside Length A	Inside Width		Diameter Pin D	Approx. Wt. Per 100 Pcs.	Rated Capacity Load Lbs.
				At Pin B	At Bow C			
19205	19305	1/4	1 ¹ / ₈	1/2	2 ⁵ / ₃₂	5/16	11.5	1,000
19210	19310	5/16	1 ⁷ / ₃₂	1 ⁷ / ₃₂	2 ⁷ / ₃₂	3/8	18.4	1,500
19215	19315	3/8	1 ⁷ / ₁₆	2 ¹ / ₃₂	1 ¹ / ₃₂	7/16	31.5	2,000
19225	19325	1/2	1 ⁷ / ₈	1 ³ / ₁₆	1 ⁵ / ₁₆	5/8	74.5	4,000
19230***	19330	5/8	2 ³ / ₈	1 ¹ / ₁₆	1 ¹¹ / ₁₆	3/4	136.4	6,500
19235***	19335	3/4	2 ¹³ / ₁₆	1 ¹ / ₄	2	7/8	213.5	9,500

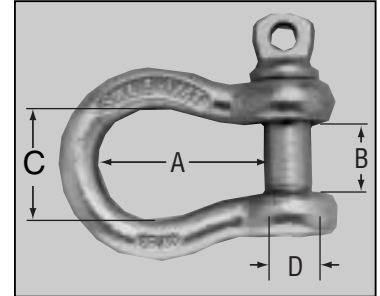
NOTE: These products are manufactured to Edward W. Daniel Co. quality standards via global contracts.

Hot Galvanized Stock No.	Nominal Shackle Size	Inside Length A	Inside Width		Diameter Pin D	Approx. Wt. Per 100 Pcs.	Rated Capacity Load Lbs.
			At Pin B	At Bow C			
19605	1/4	1 ¹ / ₈	1/2	2 ⁵ / ₃₂	5/16	11.5	1,000
19610	5/16	1 ⁷ / ₃₂	1 ⁷ / ₃₂	2 ⁷ / ₃₂	3/8	18.4	1,500
19615	3/8	1 ⁷ / ₁₆	2 ¹ / ₃₂	1 ¹ / ₃₂	7/16	31.5	2,000
19625	1/2	1 ⁷ / ₈	1 ³ / ₁₆	1 ⁵ / ₁₆	5/8	74.5	4,000
19630	5/8	2 ³ / ₈	1 ¹ / ₁₆	1 ¹¹ / ₁₆	3/4	136.4	6,500
19635	3/4	2 ¹³ / ₁₆	1 ¹ / ₄	2	7/8	213.5	9,500

- Safe Working Load permanently shown on each shackle.
- Shackles can be furnished proof tested with certificates per requirements of A.B.S. and/or I.C.G.B. Charges for proof testing and certification available on request.

Screw Pin

- Forged
- 1030 Carbon Steel
- Self-Colored/Hot Galvanized



Screw pin anchor shackles meet Federal Specification RR-C-271D, Type IVA Class 2, Grade A

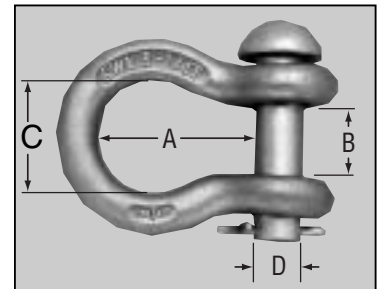
Screw Pin

AMERICAN MADE

- Forged
- 1030 Carbon Steel
- Hot Galvanized

Round Pin

- Forged
- 1030 Carbon Steel
- Self-Colored/Hot Galvanized



Round pin anchor shackles meet Federal Specification RR-C-271D, Type IVA Class 1, Grade A

Round Pin

AMERICAN MADE

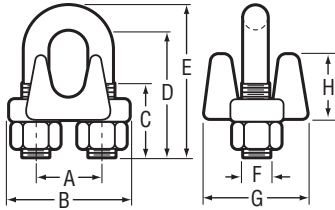
- Forged
- 1030 Carbon Steel
- Hot Galvanized

To Place an Order or for More Information Please Call
1-800-338-2658 or visit our website at www.ewdaniel.com

Wire Rope Fittings

Forged Wire Rope Clips

- Forged
- Carbon Steel
- Hot Galvanized



Stock No.	Size for Rope Dia.	Dimensions								Min. No. Clips for Max. Strength	Min. Spacing Between Clips	Approx. Wt. Per 100 Pcs.
		A	B	C	D	E	F	G	H			
18500*	1/8	1/2	1	7/16	3/4	15/16	7/32	27/32	7/16	2	3/4	6.0
18505	3/16	19/32	1 1/32	5/8	31/32	1 1/16	1/4	15/16	1/2	2	1 1/8	9.0
18510	1/4	11/16	1 7/16	7/8	1 7/32	1 1/2	5/16	1 1/8	1 1/16	2	1 1/2	18.0
18515	5/16	7/8	1 11/16	1	1 5/8	1 31/32	3/8	1 5/16	3/4	2	1 7/8	30.0
18520	3/8	1	1 15/16	7/8	1 5/8	2	7/16	1 1/2	7/8	2	2 1/4	44.5
18530	1/2	1 3/16	2 1/4	1 1/16	1 29/32	2 5/16	1/2	1 13/16	1 3/32	3	3	71.6
18540	5/8	1 1/4	2 3/8	1 7/16	2 3/8	2 7/8	9/16	2 1/16	1 1/4	3	3 3/4	100.0
18545	3/4	1 1/2	2 3/4	1 1/2	2 13/16	3 3/8	5/8	2 5/16	1 15/32	4	4 1/2	140.0
18550	7/8	1 3/4	3 3/16	1 7/8	3 1/8	3 7/8	3/4	2 7/16	1 1/2	4	5 1/4	200.0
18555	1	1 7/8	3 1/2	2 1/4	3 1/2	4 1/4	3/4	2 11/16	1 3/4	5	6	245.0
18560***	1-1/8	2 1/16	3 11/16	2 3/16	3 7/8	4 5/8	3/4	3	2	6	6 3/4	285.0
18565***	1-1/4	2 3/16	4 1/16	2 3/8	4 1/4	5 1/8	7/8	3 1/4	2 5/32	6	7 1/2	415.0
18570***	1-1/2	2 19/32	4 1/2	2 7/16	5	5 7/8	7/8	3 3/8	2 13/32	7	9	543.0

*1/8 only is supplied with regular hex nut and zinc plated U-bolt.

NOTE: These products are manufactured to Edward W. Daniel Co. quality standards via global contracts.

***These products will be discontinued when stock is depleted.

Stainless Steel Wire Rope Clips

- Forged
- 304 Stainless Steel

Stock No.	Size for Rope Dia.	Dimensions								Min. No. Clips for Max. Strength	Min. Spacing Between Clips	Approx. Wt. Per 100 Pcs.
		A	B	C	D	E	F	G	H			
SS18510***	1/4	11/16	1 7/16	7/8	1 7/32	1 1/2	5/16	1 1/8	1 1/16	2	1 1/2	18.0
SS18520***	3/8	1	1 15/16	7/8	1 5/8	2	7/16	1 1/2	7/8	2	2 1/4	44.5
SS18530***	1/2	1 3/16	2 1/4	1 1/16	1 29/32	2 5/16	1/2	1 13/16	1 3/32	3	3	71.6
SS18540***	5/8	1 1/4	2 3/8	1 7/16	2 3/8	2 7/8	9/16	2 1/16	1 1/4	3	3 3/4	100.0
SS18545***	3/4	1 1/2	2 3/4	1 1/2	2 13/16	3 3/8	5/8	2 5/16	1 15/32	4	4 1/2	140.0

All stainless electropolished.

NOTE: These products are manufactured to Edward W. Daniel Co. quality standards via global contracts.

***These products will be discontinued when stock is depleted.

- All clips are supplied with cold-forged double chamfered, heavy hex, UNC-2B nuts.*
- Meet Federal Specification Type II, Class 1 FF-C-450.
- Base, U-bolt and nuts are hot-dip galvanized in accordance with ASTM Specification A-153.*
- Forged wire rope clips are not designed for load carrying purposes therefore, working load limits have not been established.

How To Attach Wire Rope Clips

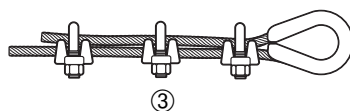
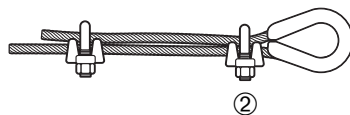
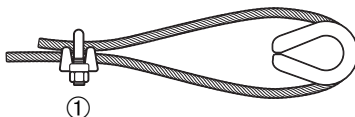
When attaching wire rope clips the base or saddle should bear on the live end of the rope — U-bolt on the short or dead end. *Staggering* or *reversing* the clips does NOT give additional holding power.

1. ATTACH *FIRST CLIP* one base width from dead end of rope. Tighten nuts securely.
2. ATTACH *SECOND CLIP* as close to loop as possible. Tighten nuts firmly but not completely tight.
3. ATTACH *ALL OTHER CLIPS* (if required) equally spaced between the first two. Tighten nuts firmly.

CAUTION

Apply the initial load to the rope. Alternately and uniformly retighten *all* nuts securely, to compensate for any reduction of rope diameter. Inspect and periodically retighten. The number of clips shown should be used for 6x19 or 6x37 class, fiber core or IWRC, IPS or XIPS, right regular or long way Wire Rope, and 8x19 or 8x7 class, fiber core, IPS or XIPS, Wire Rope. For 6x19 Seale construction or similar large outer wire constructions, add one extra clip for sizes 1" and larger. Where service conditions are unusually severe, or for other classes of rope not mentioned above, add one additional clip.

Drop Forged Wire Rope Clips, when properly applied to new rope will develop high efficiencies (approximately 80%) based upon the catalog breaking strength of the wire rope. Failure to follow the above instructions will cause a reduction in efficiency.



Wire Rope Fittings

Stock No.	Rope Size	Inside Length of U-Bolt	Min. No. of Clips for Max. Strength	Approx. Wt. Per 100 Pcs.
20900	1/16*	23/32	2-4	3.0
20905	1/8*	29/32	2-4	4.5
20910	3/16	15/16	2-4	6.5
20915	1/4	1 1/32	2-4	12.0
20920	5/16	1 5/16	2-4	12.0
20925	3/8	1 1/2	2-4	19.0
20930	7/16	1 7/8	3-4	21.8
20935	1/2	1 7/8	3-4	37.0
20940	9/16	2 1/4	3-4	46.0
20945	5/8	2 3/8	3-4	54.0
20950	3/4	2 3/4	4-5	80.0
20955	7/8	3 1/8	4-5	116.0
20960	1	3 1/2	4-5	137.0
20965	1-1/8	3 7/8	6-8	267.0
20970	1-1/4	4 1/4	6-8	328.0

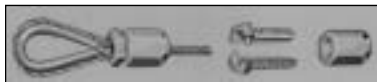
NOTE: These products are manufactured to Edward W. Daniel Co. quality standards via global contracts.

USE CLIPS PROPERLY FOR MAXIMUM EFFICIENCY

1. U-bolt should bear on dead end of rope.
2. Use recommended number of clips, depending on safety requirement.
3. Spacing between clips should be 6 times the rope diameter.
4. Nuts should be retightened after initial load.

Stock No.	Rope Size	Threads Per In.	Recommended Torque To Assemble	Approx. Wt. Per 100 Pcs.
18651	1/8	20	35 ft. lb.	7.0
18653	3/16	20	80	16.0
18654	1/4	16	145	25.0
18655	5/16	16	225	50.0
18656	3/8	16	325	75.0
18658***	1/2	12	575	200.0
18662***	3/4	10	1300	500.0

***These products will be discontinued when stock is depleted.



Provides an efficiency of over 90% of rated wire-rope strength - Accommodates 6x19 (I.W.R.C.) or 7x19 right-regular-lay wire rope - Easy-to-use 3 piece assembly - can be field assembled faster than U-bolt clips, yet offers nearly same smooth configuration as a swaged fitting - Encloses potentially hazardous wire ends - Meets or exceeds all requirements for military standard MS-16843; and conforms to Federal Specification FF-C-450.

Stock No.	Size Rope Dia.	Dimensions						Max. Pin Dia. P	Approx. Wt. Per 100 Pcs.
		B	C	F	L	W			
40300	1/4	1 1/16	7/8	7/16	2 1/4	1 3/16	1 1/2	9.0	
40305	5/16	2	1 1/16	1 7/32	2 5/8	1	1 7/8	13.5	
40310	3/8	2 1/8	1 1/8	2 1/32	2 3/4	1 1/16	2	26.0	
40315***	7/16	2 1/4	1 1/4	3/4	3 1/16	1 3/16	2 1/4	31.0	
40320	1/2	2 3/4	1 1/2	7/8	3 3/4	1 7/16	2 7/8	43.0	
40325***	9/16	2 3/4	1 1/2	1 5/16	3 3/4	1 7/16	2 5/8	48.0	
40330***	5/8	3 1/4	1 3/4	1 1/32	4 3/16	1 5/8	3	76.0	
40335***	3/4	3 3/4	2	1 1/4	5	1 7/8	3 3/4	142.5	
40340***	7/8	4 1/4	2 1/4	1 7/16	5 1/16	2 1/8	4 1/8	189.0	
40345***	1	4 5/8	2 1/16	1 5/8	6 7/16	2 1/2	4 15/16	280.0	
40350***	1-1/8 - 1-1/4	5 1/4	2 15/16	1 7/8	7 1/4	2 3/4	5 7/16	402.0	

A heavy thimble with deep score, made from heavy gauge steel. Designed to withstand the crushing strains imposed by severe loads. Hot-dip galvanized in accordance with ASTM Specification A 153 for maximum corrosion protection. All sizes meet or exceed Federal Specification FF-T-276b for Type III thimbles.

NOTE: These products are manufactured to Edward W. Daniel Co. quality standards via global contracts.

***These products will be discontinued when stock is depleted.

Malleable Wire Rope Clips

- 1030 Carbon Steel
- Zinc Plated



- All regular hex nuts.
- Clips meet Federal Specification FF-C-450, Type I, Class 2
- Bulk pack

Safe-Line Clamps

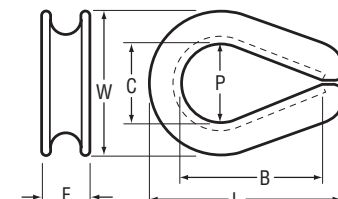
- Plated
- Carbon Steel Construction



Can be used for load carrying applications.

Heavy Wire Rope Thimbles

- 1030 Carbon Steel
- Hot Galvanized



Wire Rope Fittings

Stainless Steel Heavy Wire Rope Thimbles

• 316 Stainless Steel

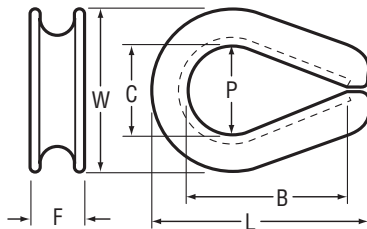


Stock No.	Size Rope Dia.	Dimensions					Max. Pin Dia. P	W	Approx. Wt. Per 100 Pcs.
		B	C	F	L				
SS40300***	1/4	1 11/16	7/8	7/16	2 1/4	13/16	1 1/2	9.0	
SS40305***	5/16	2	1 1/16	17/32	2 5/8	1	1 7/8	13.5	
SS40310***	3/8	2 1/8	1 1/8	2 1/32	2 3/4	1 1/16	2	26.0	
SS40320***	1/2	2 3/4	1 1/2	7/8	3 3/4	17/16	2 7/8	43.0	
SS40330***	5/8	3 1/4	1 3/4	1 1/32	4 3/16	1 9/8	3	76.0	
SS40335***	3/4	3 3/4	2	1 1/4	5	1 7/8	3 3/4	142.5	

All stainless electropolished.

NOTE: These products are manufactured to Edward W. Daniel Co. quality standards via global contracts.

***These products will be discontinued when stock is depleted.



Regular Type Thimbles

• 1030 Carbon Steel
• Hot Galvanized



Stock No.	Size Rope Dia.	Approx. Length Overall	Min. Inside Width	Approx. Wt. Per 100 Pcs.
40400*	1/8*	1 3/16	1/2	1.4
40405	3/16	1 3/4	1 1/16	2.2
40410	1/4	1 7/8	1 1/16	3.8
40415	5/16	2	1 3/16	6.4
40420	3/8	2 1/2	2 5/32	10.0
40425***	7/16	2 3/4	1 1/16	12.6
40430	1/2	3	1 1/8	20.5
40435	5/8	3 5/8	1 9/8	30.4
40440	3/4	4 3/8	1 1/2	46.0
40445***	7/8	4 3/4	1 7/8	75.0
40450***	1	6	2 1/8	92.0

*1/8" German B-DIN specification.

NOTE: These products are manufactured to Edward W. Daniel Co. quality standards via global contracts.

***These products will be discontinued when stock is depleted.

Recommended for light duty service.
Regular type meets Federal Specification
FF-T-276b, Type II.

Stainless Steel Regular Type Thimbles

• 304 Stainless Steel

Stock No.	Size Rope Dia.	Approx. Length Overall	Min. Inside Width	Approx. Wt. Per 100 Pcs.
SS40410***	1/4	1 7/8	1 1/16	3.8
SS40415***	5/16	2	1 3/16	6.4
SS40420***	3/8	2 1/2	2 5/32	10.0

All stainless electropolished.

NOTE: These products are manufactured to Edward W. Daniel Co. quality standards via global contracts.

***These products will be discontinued when stock is depleted.

Stock No.	Size of Chain	Wt. Per 100 Pcs.	Rated Capacity
Self-Colored Finish			
19705	1/4	29.0	1,250
19710	5/16	43.0	1,900
19715	3/8	83.0	2,650
19725	1/2	205.0	4,500
Heat Treated/Red			
19805	1/4	29.0	2,600
19810	5/16	43.0	3,900
19815	3/8	83.0	5,400
19825***	1/2	205.0	9,200
19830***	5/8	341.0	14,000
19835***	3/4	530.0	19,900

NOTE: These products are manufactured to Edward W. Daniel Co. quality standards via global contracts.
 ***These products will be discontinued when stock is depleted.

Self-Colored Finish			
19905	1/4	30.0	1,250
19910	5/16	52.0	1,900
19915	3/8	86.0	2,650
19925	1/2	200.0	4,500
19935	3/4	650.0	9,750
Heat Treated/Red			
20005	1/4	30.0	2,600
20010	5/16	52.0	3,900
20015	3/8	86.0	5,400
20025	1/2	200.0	9,200
20030	5/8	360.0	14,000
20035***	3/4	650.0	19,900

NOTE: These products are manufactured to Edward W. Daniel Co. quality standards via global contracts.
 ***These products will be discontinued when stock is depleted.

Self-Colored Finish			
20105	1/4	36.0	1,250
20110	5/16	56.0	1,900
20115	3/8	93.0	2,650
20125	1/2	232.0	4,500
Heat Treated/Red			
20205	1/4	36.0	2,600
20210	5/16	56.0	3,900
20215	3/8	93.0	5,400
20225	1/2	232.0	9,200

NOTE: These products are manufactured to Edward W. Daniel Co. quality standards via global contracts.

Self-Colored Finish			
20305	1/4	34.0	1,250
20310	5/16	64.0	1,900
20315	3/8	102.0	2,650
20320	7/16	144.0	3,500
20325	1/2	216.0	4,500
Heat Treated/Red			
20405	1/4	34.0	2,600
20410	5/16	64.0	3,900
20415	3/8	102.0	5,400
20425	1/2	216.0	9,200

All heat treated chain hardware meets requirements for Hi-Test Chain.

WARNING: Use heat treated hooks only with Hi-Test Chain.

NOTE: These products are manufactured to Edward W. Daniel Co. quality standards via global contracts.

Chain Slip Hooks

- Forged • Carbon Steel
- Self-Colored



Chain Grab Hooks

- Forged • Carbon Steel
- Self-Colored



Clevis Slip Hooks

- Forged • Carbon Steel
- Self-Colored



Clevis Grab Hooks

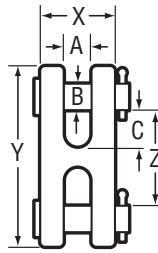
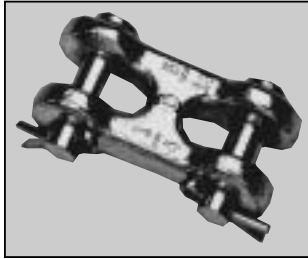
- Forged • Carbon Steel
- Self-Colored



Chain Hardware

Double Clevis Links

- Forged
- Electro-Zinc Plated



Stock No.	Chain Size High Test Grade 43	Chain Size Transport Grade 70	Wt. Per 100 Pcs.	Ultimate Strength Lbs.
20700	1/4 or 5/16	1/4	33.0	13,000
20701	3/8	5/16	49.0	18,800
20705	7/16 or 1/2	3/8	105.0	28,000

Specifications

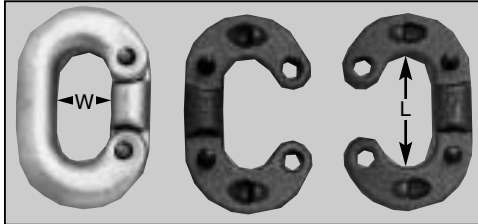
Chain Size	A	B	C	X	Y	Z
1/4 or 5/16	13/32	3/8	7/16	1 1/8	2 5/8	1 5/16
3/8	1/2	7/16	1/2	1 5/16	3 1/32	1 17/32
7/16 or 1/2	2 1/32	9/16	5/8	1 23/32	3 29/32	2

- Designed for linking all popular sizes of chain to rings, end links, eye hooks, pad eyes, tractor eyebolts, etc.
- Pin can be removed with pliers or screwdriver.
- All pins alloy steel, Quenched and Tempered.

NOTE: These products are manufactured to Edward W. Daniel Co. quality standards via global contracts.

Connecting Links

- Forged
- Zinc Plated



Forged steel, Quenched and Tempered.

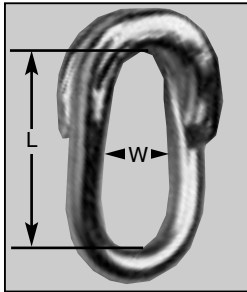
Zinc Plated Stock No.	Size	Inside Dimensions		Approx. Wt. Per 100 Pcs.	Min. Rated Capacity
		Width W	Length L		
18800	3/16	9/32	X 17/32	3.0	650
18805	1/4	7/16	X 13/16	6.0	1,400
18810	5/16	15/32	X 29/32	10.0	2,100
18815	3/8	9/16	X 1 3/32	18.0	2,800
18820***	7/16	19/16	X 1 3/16	26.0	3,500
18825	1/2	23/32	X 1 15/32	39.0	4,150
18830	5/8	13/16	X 1 3/4	75.0	6,250
18835	3/4	1 7/64	X 2	120.0	9,000
18840***	7/8	1 1/8	X 2 15/16	170.0	12,000

NOTE: These products are manufactured to Edward W. Daniel Co. quality standards via global contracts.

***These products will be discontinued when stock is depleted.

Chain Repair Links

- Zinc Plated



Stock No.	Wire Dia.	Inside Length L	Inside Width W	Approx. Wt. Per 100 Pcs.
40700	3/16	1	1/2	3.25
40705	1/4	1 1/4	1/2	6.50
40710	5/16	1 1/2	3/4	13.25
40715	3/8	2	3/4	26.00
40720	1/2	2 1/2	1	55.00

NOTE: These products are manufactured to Edward W. Daniel Co. quality standards via global contracts.

Cold Shuts

- Forged
- Self-Colored



Stock No.	Size of Chain	Wt. Per 100 Pcs.	Rated Capacity
Tumble Bright Finish			
19500	3/16	2.5	750
19505	1/4	5.5	1,250
19510	5/16	10.0	1,900
19515	3/8	16.5	2,650
19520	7/16	25.0	3,500
19525	1/2	37.0	4,500
19530	5/8	79.0	6,900
19535	3/4	132.5	9,750

NOTE: These products are manufactured to Edward W. Daniel Co. quality standards via global contracts.

Blue Diamond™ Wrought Nut Eye Bolts

Stock No.	Thread Dia.	I.D. Eye A	Thread Length B	Shank Length C	Overall Length D	Approx. Wt. Per 100 Pcs.
21368	6-32	1/4	15/16	1	1 1/2	1.0
21370	8-32	1/4	1	1 1/16	1 5/8	1.2
21371	8-32	3/8	1	1 1/16	1 3/4	1.4
21380	10-24	5/16	1 1/8	1 1/4	1 15/16	1.6
21381	10-24	3/8	7/8	1	1 11/16	1.5
21382	10-24	3/8	1	2	2 11/16	2.0
21383	10-24	3/8	1 1/2	3	3 11/16	2.5
21384	10-32	11/32	9/32	3/16	1 1/16	1.0
21390	12-24	3/8	1 3/8	1 7/16	2 3/16	2.5
21400	1/4-20	9/16	7/8	1	2	3.6
21410	1/4-20	9/16	1 3/8	1 1/2	2 1/2	4.0
21420	1/4-20	3/8	1 1/2	1 13/16	2 5/8	4.0
21430	1/4-20	9/16	1 1/2	2	3	4.6
21440	1/4-20	9/16	1 1/2	2 1/2	3 1/2	5.2
21450	1/4-20	9/16	1 1/2	3	4	5.4
21451	1/4-20	9/16	1 1/2	3 1/2	4 1/2	6.3
21460	1/4-20	9/16	1 1/2	4	5	6.6
21470	1/4-20	9/16	1 1/2	5	6	7.0
21500	5/16-18	1/2	2	2 3/16	3 1/4	7.8
21510	5/16-18	3/4	1 7/8	1 15/16	3 1/4	8.2
21520	5/16-18	3/4	2	2 5/8	4	9.9
21530	5/16-18	3/4	2 1/2	3 3/8	5	11.6
21540	5/16-18	3/4	2 1/2	4 5/8	6	13.4
21600	3/8-16	5/8	2 3/8	2 1/2	3 7/8	13.2
21610	3/8-16	1	2 1/8	2 1/4	4	15.7
21620	3/8-16	1	2 1/2	3 1/4	5	16.8
21630	3/8-16	1	2 1/2	4 1/4	6	20.6
21640	3/8-16	1	2 1/2	6 1/4	8	25.3
21650	3/8-16	1	2 1/2	7 3/8	9 1/2	29.2
21660	3/8-16	1	2 1/2	9 7/8	11 1/2	37.0
21670	3/8-16	1	2 1/2	11 7/8	13 1/2	41.0
21700	7/16-14	1	2 1/2	4	6	27.2
21710	7/16-14	1	2 1/2	6	8	35.3
21720***	7/16-14	1	2 1/2	8	10	41.8
21730***	7/16-14	1	2 1/2	10	12	48.5
21740	1/2-13	1	2 3/4	3	5	34.0
21750	1/2-13	1	3	4	6	37.3
21760	1/2-13	1	3	5	7	42.3
21770	1/2-13	1	3	6	8	46.2
21780	1/2-13	1	3	8	10	54.3
21790	1/2-13	1	3	10	12	63.5
21800	5/8-11	1 1/4	3	3 1/2	6	62.5
21810***	5/8-11	1 1/4	3	5 1/2	8	74.6
21820	5/8-11	1 1/4	3	7 1/2	10	90.5
21830***	5/8-11	1 1/4	3	9 1/2	12	103.5

***These products will be discontinued when stock is depleted.

Stock No.	Thread Dia. A	Overall Length B	Shank Length C	Thread Length D	I.D. Eye E	Wt. Per 100 Pcs.
SS21400	1/4-20	2	1	7/8	9/16	3.6
SS21420	1/4-20	2 5/8	1 13/16	1 1/2	3/8	4.0
SS21440	1/4-20	3 1/2	2 1/2	1 1/2	9/16	5.2
SS21450	1/4-20	4	3	1 1/2	9/16	5.4
SS21500	5/16-18	3 1/4	2 3/16	2	1/2	7.8
SS21520	5/16-18	4	2 5/8	2	3/4	9.9
SS21601	3/8-16	3	1 3/4	1	1	13.0
SS21610	3/8-16	4	2 1/4	2 1/8	1	15.7
SS21630	3/8-16	6	4 1/4	2 1/2	1	20.6
SS21640***	3/8-16	8	6 1/4	2 1/2	1	25.3

Furnished with stainless steel hex nuts (unassembled).

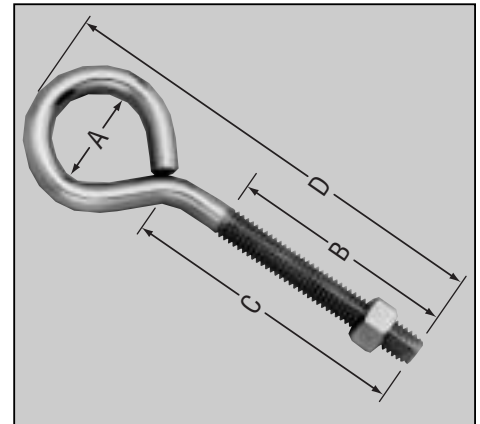
Available bulk only.

All stainless electropolished.

***These products will be discontinued when stock is depleted.

Bent Eyes

- 1010 Carbon Steel
- Zinc Plated

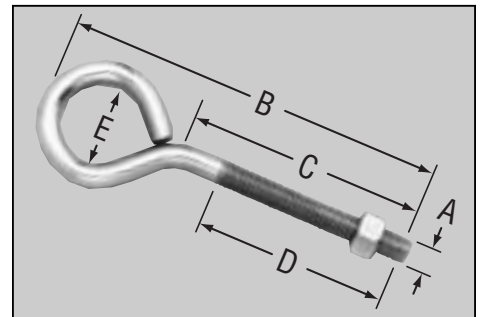


NOT RECOMMENDED FOR LIFTING

- Furnished with hex nuts (unassembled)
- All sizes manufactured with rolled threads

Stainless Steel Wrought Eye Bolts

- 304 Stainless Steel



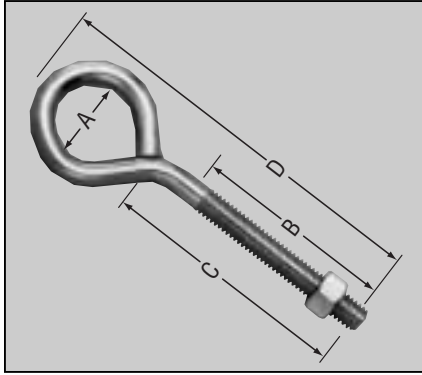
NOT RECOMMENDED FOR LIFTING

To Place an Order or for More Information Please Call
1-800-338-2658 or visit our website at www.ewdaniel.com

Blue Diamond™ Wrought Nut Eye Bolts

Bent Eyes Welded Closed

- 1010 Carbon Steel
- Zinc Plated



**NOT RECOMMENDED
FOR LIFTING**

- Furnished with hex nuts (unassembled)
- All sizes manufactured with rolled threads

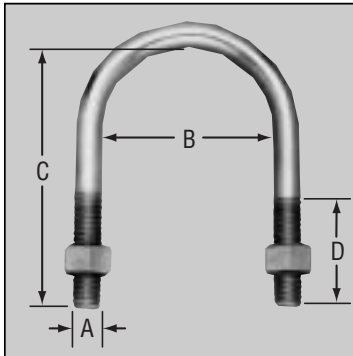
Stock No.	Thread Dia.	I.D. Eye A	Thread Length B	Shank Length C	Overall Length D	Approx. Wt. Per 100 Pcs.
24500	1/4-20	9/16	7/8	1	2	3.6
24510	1/4-20	9/16	1 1/8	1 1/2	2 1/2	4.0
24530	1/4-20	9/16	1 1/2	2	3	4.6
24540	1/4-20	9/16	1 1/2	3	4	5.4
24550	1/4-20	9/16	1 1/2	4	5	6.6
24560	1/4-20	9/16	1 1/2	5	6	7.0
24630	5/16-18	3/4	1 7/8	1 15/16	3 1/4	8.2
24640	5/16-18	3/4	2	2 5/8	4	9.9
24650	5/16-18	3/4	2 1/2	3 5/8	5	11.6
24660	5/16-18	3/4	2 1/2	4 5/8	6	13.4
24740	3/8-16	1	2 1/8	2 1/4	4	15.7
24750	3/8-16	1	2 1/2	3 3/4	5	16.8
24760	3/8-16	1	2 1/2	4 1/4	6	20.6
24780***	3/8-16	1	2 1/2	6 1/4	8	25.3

***These products will be discontinued when stock is depleted.

Blue Diamond™ U-Bolts

U-Bolts Unassembled with Nuts

- 1010 Carbon Steel
- Zinc Plated



- All sizes manufactured with rolled threads.

Stock No.	Thread Dia. Inches A	Width Bet. Legs Inches B	Inside Length Inches C	Thread Length Inches D	Pipe Size Inches	Wt. Per 100 Pcs.
34010	1/4-20	3/4	1 1/4	3/4	3/8	4.8
34020	1/4-20	3/4	1 3/4	3/4	3/8	5.8
34030	1/4-20	3/4	2 1/4	1 1/2	3/8	6.8
34070	1/4-20	1	1 3/4	3/4	1/2	6.0
34080	1/4-20	1 1/8	2	3/4	3/4	6.5
34090	1/4-20	1 3/8	2 1/4	3/4	1	7.4
34100	1/4-20	1 3/4	2 3/4	1	1 1/4	8.5
34110	1/4-20	2	3 1/4	1 1/4	1 1/2	9.5
34120	1/4-20	1 1/2	3 1/2	2	1	9.8
34200	5/16-18	1 3/8	2 3/16	1	1	11.6
34210	5/16-18	1 3/8	3 1/16	1 1/2	1	16.5
34220	5/16-18	1 3/4	2 1/16	1	1 1/4	13.6
34240	5/16-18	2	2 1/16	1	1 1/2	13.6
34250	5/16-18	2	3 1/16	1 1/2	1 1/2	17.2
34270	5/16-18	2 1/2	3 3/16	1 1/2	2	16.0
34292	3/8-16	1	2 1/4	1 1/4	1/2	17.7
34301	3/8-16	1 3/8	3 1/8	1 1/2	1	21.5
34303	3/8-16	1 1/2	2 1/2	1 1/4	1	19.2
34304	3/8-16	2	3 1/8	1 1/4	1 1/2	23.0
34310	3/8-16	2 1/2	3 5/8	1 1/2	2	24.9
34320	3/8-16	3	4 1/8	1 1/2	2 1/2	28.0
34330	3/8-16	3 5/8	4 5/8	1 1/2	3	32.3
34400	1/2-13	3	4 1/2	1 1/2	2 1/2	58.0
34410	1/2-13	3 1/2	5	1 1/2	3	66.5
34420	1/2-13	4	5 1/2	1 1/2	3 1/2	68.0
34430	1/2-13	4 5/8	6	1 1/2	4	74.0
34440***	1/2-13	5 5/8	7	2	5	86.5
34450	1/2-13	6 3/4	8	2	6	101.5
34455	1/2-13	8 3/4	10 3/8	2	8	125.0
34474***	5/8-11	8 3/4	11 1/2	4	8	253.0

***These products will be discontinued when stock is depleted.

Blue Diamond™ U-Bolts

Stock No.	Thread Dia. Inches A	Width Bet. Legs Inches B	Inside Length Inches C	Thread Length Inches D	Pipe Size Inches	Wt. Per 100 Pcs.
SS34010	1/4-20	3/4	1 1/4	3/4	3/8	4.8
SS34030	1/4-20	3/4	2 1/4	1 1/2	3/8	6.8
SS34070	1/4-20	1	1 3/4	3/4	1/2	6.0
SS34080	1/4-20	1 1/8	2	3/4	3/4	6.5
SS34090	1/4-20	1 3/8	2 1/4	3/4	1	7.4
SS34100	1/4-20	1 3/4	2 3/4	1	1 1/4	8.5
SS34110	1/4-20	2	3 1/4	1 1/4	1 1/2	9.5
SS34200	5/16-18	1 3/8	2 3/16	1	1	11.6
SS34220	5/16-18	1 3/4	2 1 1/16	1	1 1/4	13.6
SS34240	5/16-18	2	2 1 1/16	1	1 1/2	13.6
SS34270	5/16-18	2 1/2	3 3/16	1 1/2	2	16.0
SS34292	3/8-16	1	2 1/4	1 1/4	1/2	17.7
SS34303	3/8-16	1 1/2	2 1/2	1 1/4	1	19.2
SS34304	3/8-16	2	3 1/8	1 1/4	1 1/2	23.0
SS34310	3/8-16	2 1/2	3 3/8	1 1/2	2	24.9
SS34320	3/8-16	3	4 1/8	1 1/2	2 1/2	28.0
SS34330	3/8-16	3 5/8	4 5/8	1 1/2	3	32.3

All stainless electropolished.
Stainless steel strap washers available. Call for quote.

Stock No.	Thread Dia. A	Width Bet. Legs B	Inside Length C	Thread Length D	Wt. Per 100 Pcs.
36000	3/8-16	2	3	1 1/2	20.0
36005	3/8-16	2	5	3	29.6
36010***	3/8-16	2	7	3 3/4	39.2
36015	3/8-16	4	3	1 1/2	24.8
36020	3/8-16	4	5	3	34.4
36025***	3/8-16	4	7	3 3/4	57.0
36030***	3/8-16	6	5	3	39.2
36035***	3/8-16	6	7	3 3/4	63.2
36040***	3/8-16	6	9	5 3/8	59.6

*Strap washers not included.
***These products will be discontinued when stock is depleted.

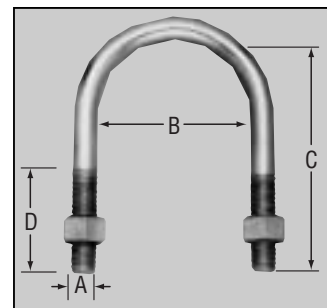
Stock No.	Width Between Slots A	Approx. Dimensions			Slot Size	Wt. Per 100 Pcs.
		Length Overall B	Thickness			
35501	19/32	2 15/32	.094	9/32 X 1 1/16	3.5	
35601	9/32	2 1/8	.080	5/16 X 1 1/16		
35502	13/16	3 1/16	.094	9/32 X 1 1/16	3.8	
35602	3/4	2 1/2	.080	5/16 X 1 1/16		
35503	1 1/4	3 3/32	.094	1 1/32 X 1 1/16	4.8	
35603	1 1 1/32	3 1/8	.080	5/16 X 1 1/16		
35504	1 13/16	3 1 1/16	.094	1 1/32 X 1 1/16	5.9	
35604	1 15/16	3 3/4	.080	13/32 X 1 1/16		
35505	1 5/16	3 3/16	.125	7/16 X 3/4	9.6	
35605	2 3/4	4 9/16	.080	13/32 X 1 1/16		
35506	2 3/8	4 3/8	.125	7/16 X 3/4	13.1	
35606	3 1/8	4 15/16	.080	13/32 X 1 1/16		
35507	3 1/8	5 1/8	.125	7/16 X 3/4	14.0	

Stock No.	U-bolt Stock Nos.	Stock No.	U-bolt Stock Nos.
35501	34010 – 34090	35601	34010 – 34080
35502	34100 – 34120	35602	34090, 34200, 34210
35503	34200 – 34220	35603	34100 – 34120, 34220 – 34250
35504	34240 – 34250	35604	34270, 34304 – 34310
35505	34301 – 34304	35605	34320
35506	34310 – 34320	35606	34330
35507	34330		

Stainless Steel U-Bolts

• 304 Stainless Steel

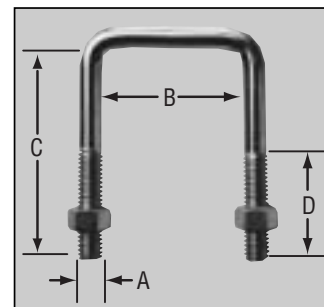
• Furnished with stainless steel hex nuts (unassembled).



Square Bend U-bolts

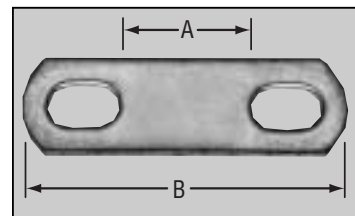
Unassembled with Nuts*

• 1010 Carbon Steel
• Zinc Plated



Strap Washers

• 1010 Carbon Steel
• Zinc Plated*

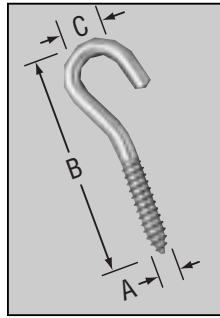


*304 & 316 Stainless steel strap washers available. Call for quote.

Hooks & Screw Eye Bolts

Clothes Line Hooks

• Zinc Plated

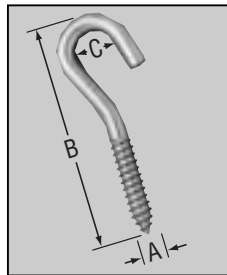


Stock No.	Thread Diameter A	Overall Length B	I.D. Eye C	Approx. Wt. Per 100 Pcs.
40186***	5/16	4½	7/8	10.2
40187***	3/8	5	1	16.0

***These products will be discontinued when stock is depleted.

Porch Swing Hooks

• Zinc Plated

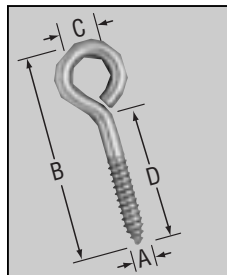


Stock No.	Thread Diameter A	Overall Length B	I.D. Eye C	Approx. Wt. Per 100 Pcs.
40184***	5/16	3½	5/8	10.0
40185***	3/8	4¼	¾	14.2

***These products will be discontinued when stock is depleted.

Lag Screw Eyes

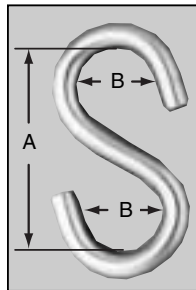
• Zinc Plated



Stock No.	Thread Dia. A	Overall Length B	I.D. Eye C	Shank Length D	Approx. Wt. Per 100 Pcs.
40191	5/16	3½	5/8	2¼	10.6
40192	3/8	4	¾	2½	14.5

S-Hooks

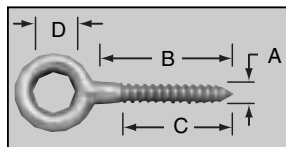
• Zinc Plated



Stock No.	Size	Wire Dia.	Inside Length A	I.D. Eye B	Approx. Wt. Per 100 Pcs.
41705	5/32	.134	1	3/8	1.2
41710	3/16	.187	1½	3/8	3.0
41715	1/4	.250	1¾	21/32	6.7
41720	5/16	.313	1⅞	¾	11.0
41725	3/8	.375	2 ²³ / ₆₄	25/32	20.4

Forged Screw Eye Bolts

• Hot Galvanized



Stock No.	Shank Dia. A	Shank Length B	Thread Length C	I.D. Eye D	Approx. Wt. Per 100 Pcs.
41390	1/4	2	1⅝	½	5.0
41391	5/16	2¼	2	5/8	9.0
41392	3/8	2½	2¼	¾	15.2
41393	1/2	3¼	2⅝	1	36.0
41394	5/8	4	2½	1⅝	75.0

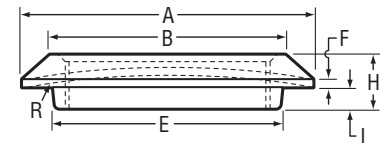
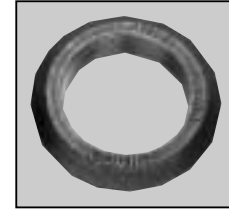
Flanges

Stock No.	Pipe Size	A	B	E	F	H	I	Approx. Wt. Per 100 Pcs.
60000	1/8	1 ⁵ / ₁₆	7/8	1 ⁵ / ₁₆	3/32	3/8	1/8	10.0
60005	1/4	1 ⁵ / ₁₆	7/8	1 ⁵ / ₁₆	3/32	3/8	1/8	9.0
60010	3/8	1 ⁵ / ₁₆	7/8	1 ⁵ / ₁₆	3/32	3/8	1/8	7.0
60015	1/2	1 ⁵ / ₈	1 ¹ / ₁₆	1 ¹ / ₈	3/32	7/16	3/16	12.0
60020	3/4	1 ¹⁵ / ₁₆	1 ⁵ / ₁₆	1 ⁵ / ₁₆	3/32	1/2	3/16	19.0
60025	1	2 ¹ / ₄	1 ⁵ / ₈	1 ¹¹ / ₁₆	3/32	9/16	1/4	29.0
60030	1-1/4	2 ⁹ / ₁₆	1 ¹⁵ / ₁₆	2	3/32	9/16	1/4	33.0
60035	1-1/2	2 ¹³ / ₁₆	2 ³ / ₁₆	2 ¹ / ₄	3/32	9/16	1/4	37.0
60040	2	3 ³ / ₈	2 ³ / ₄	2 ⁵ / ₈	3/32	5/8	1/4	51.0

SA181 Class 60 Rated.

Medium Heavy Flange Pilot Type

- Forged • Carbon Steel
- Self-Colored

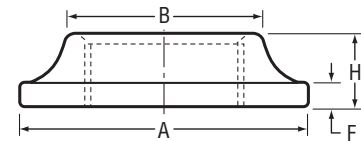
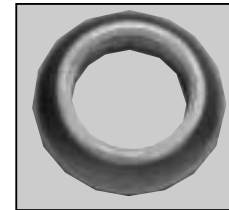


Stock No.	Pipe Size	A	B	F	H	Approx. Wt. Per 100 Pcs.
60215	1/2	2	1 ¹ / ₄	1/4	3/4	32.0
60220	3/4	2 ¹ / ₄	1 ¹ / ₂	1/4	3/4	44.0
60225	1	2 ¹ / ₂	1 ³ / ₄	1/4	3/4	53.0
60230	1-1/4	3	2 ¹ / ₁₆	1/4	3/4	63.0
60235	1-1/2	3 ¹ / ₄	2 ⁷ / ₁₆	1/4	3/4	86.0
60240	2	3 ³ / ₄	2 ⁷ / ₈	1/4	3/4	104.0
60245	2-1/2	4 ¹ / ₄	3 ³ / ₈	1/4	1	145.0
60250	3	5 ¹ / ₂	4 ¹ / ₄	1/4	1	290.0
60260	4	6 ¹ / ₂	5 ¹ / ₄	1/4	1 ¹ / ₈	410.0

SA181 Class 60 Rated.

Extra Heavy Flange Flat Type

- Forged • Carbon Steel
- Self-Colored



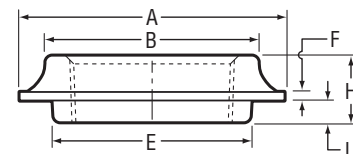
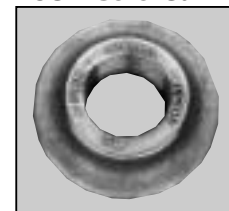
Stock No.	Pipe Size	A	B	E	F	H	I	Approx. Wt. Per 100 Pcs.
60300	1/8	1 ¹ / ₂	1	1 ⁵ / ₁₆	3/32	9/16	1/4	12.0
60305	1/4	1 ¹ / ₂	1	1 ⁵ / ₁₆	3/32	9/16	1/4	12.0
60310	3/8	1 ¹ / ₂	1	1 ⁵ / ₁₆	3/32	9/16	1/4	12.0
60315	1/2	1 ³ / ₄	1 ³ / ₁₆	1 ¹ / ₈	3/32	5/8	1/4	17.0
60320	3/4	2 ¹ / ₈	1 ⁷ / ₁₆	1 ³ / ₈	3/32	1 ¹ / ₁₆	1/4	23.0
60325	1	2 ³ / ₈	1 ³ / ₄	1 ²¹ / ₃₂	3/32	3/4	1/4	36.0
60330	1-1/4	2 ¹¹ / ₁₆	2 ¹ / ₈	2	3/32	3/4	1/4	45.0
60335	1-1/2	3	2 ³ / ₈	2 ¹ / ₄	3/32	3/4	1/4	53.0
60340	2	3 ¹ / ₂	2 ⁷ / ₈	2 ⁵ / ₈	3/32	2 ⁷ / ₃₂	1/4	74.0
60345	2-1/2	4 ¹ / ₁₆	3 ⁹ / ₃₂	3 ⁹ / ₃₂	1/8	1	3/16	110.0
60350	3	4 ⁵ / ₈	3 ¹⁵ / ₁₆	3 ²¹ / ₃₂	1/8	1	3/16	126.0
60355***	3-1/2	5 ¹ / ₈	4 ⁷ / ₁₆	4 ⁹ / ₃₂	1/8	1	3/16	135.0
60360	4	5 ¹³ / ₁₆	4 ¹⁵ / ₁₆	4 ²³ / ₃₂	1/8	1 ⁷ / ₃₂	3/16	212.0

SA181 Class 60 Rated.

***These products will be discontinued when stock is depleted.

Standard Heavy Flange Flat Type with Pilot

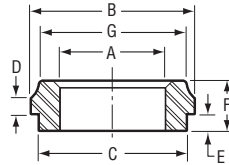
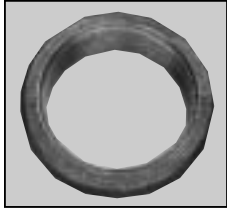
- Forged Carbon Steel
- Self-Colored



Flanges

Trimmed Special Heavy Flange Straight Pilot

- Forged • Carbon Steel
- Self-Colored



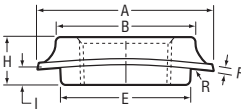
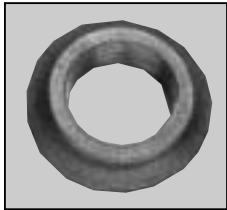
Stock No.	A	B	C	D	E	F	G	Approx. Wt. Per 100 Pcs.
60800***	1/8	1 ⁵ / ₁₆	1 ⁵ / ₁₆	3/16	3/32	9/16	1	11.0
60805***	1/4	1 ⁵ / ₁₆	1 ⁵ / ₁₆	3/16	1/4	9/16	1	11.0
60810***	3/8	1 ⁵ / ₁₆	1 ⁵ / ₁₆	3/16	1/4	9/16	1	13.0
60815***	1/2	1 1/2	1 1/8	3/16	1/4	5/8	1 ³ / ₁₆	16.0
60820***	3/4	1 1/4	1 3/8	3/16	1/4	1 ¹ / ₁₆	1 ⁷ / ₁₆	22.0
60825***	1	2 ¹ / ₃₂	2 ¹ / ₃₂	3/16	1/4	3/4	1 1/4	32.0
60830***	1-1/4	2 3/8	2	3/16	1/4	3/4	2 1/8	40.0
60835***	1-1/2	2 3/8	2 1/4	3/16	1/4	3/4	2 3/8	47.0
60840***	2	3 1/8	2 5/8	1/4	1/4	2 ⁷ / ₃₂	2 7/8	62.0

SA181 Class 60 Rated.

***These products will be discontinued when stock is depleted.

Standard Heavy Curved Flange

- Forged • Carbon Steel
- Self-Colored



Stock No.	Pipe Size	A	B	E	F	H	I	Radius	Approx. Wt. Per 100 Pcs.
60420	3/4	2	1 5/8	1 ¹⁷ / ₃₂	1/8	5/8	5/16	7"	32.0
60425	1	2 3/8	1 3/4	2 ¹ / ₃₂	1/8	3/4	1/4	15"	39.0
60430	1-1/4	2 ¹¹ / ₁₆	2 1/8	1 ³ / ₃₂	1/8	1 ¹ / ₁₆	3/16	7"	44.0
60435	1-1/2	3 ¹ / ₁₆	2 ⁷ / ₁₆	2 ¹¹ / ₃₂	1/8	2 ⁵ / ₃₂	3/16	8 1/8"	51.0
60437	1-1/2	3 ¹ / ₁₆	2 ⁷ / ₁₆	2 ¹¹ / ₃₂	1/8	2 ⁵ / ₃₂	3/16	15"	51.0
60440	2	3 1/2	2 7/8	2 ¹⁹ / ₃₂	1/8	7/8	5/32	7"	81.0
60442	2	3 1/2	2 7/8	2 ¹⁹ / ₃₂	1/8	3 ¹ / ₃₂	5/32	15"	81.0
60445	2-1/2	4 1/16	3 3/32	3 ¹ / ₃₂	1/8	1	1/4	27"	119.0
60450	3	4 5/8	3 ¹⁵ / ₁₆	3 ² / ₃₂	1/8	1	1/4	27"	140.0
60455***	3-1/2	5 1/8	4 ⁷ / ₁₆	4 ⁵ / ₃₂	1/8	1	1/4	27"	155.0
60460	4	5 ¹³ / ₁₆	5 1/8	4 ²³ / ₃₂	1/8	1 ⁷ / ₃₂	1 ³ / ₃₂	27"	218.0
60465	5	7 1/8	6 3/16	5 ¹³ / ₁₆	1/4	1 ⁵ / ₁₆	5/16	40"	400.0

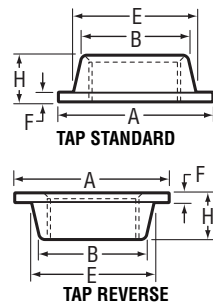
Specify radius.

SA181 Class 60 Rated.

***These products will be discontinued when stock is depleted.

Standard Heavy Flange Flat Type

- Forged • Carbon Steel
- Self-Colored



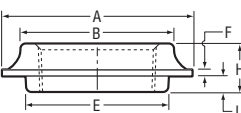
Stock No.	Reverse Tap	Pipe Size	A	B	E	F	H	Approx. Wt. Per 100 Pcs.
60505	60605	1/4	1 1/4	2 ³ / ₃₂	3/4	1/8	5/16	6.0
60510	60610***	3/8	1 1/4	2 ⁷ / ₃₂	15/16	1/8	3/8	6.0
60515	60615	1/2	1 1/2	1	1 1/8	1/8	1/2	9.0
60520	60620	3/4	1 3/4	1 ¹³ / ₆₄	1 3/8	5/32	2 ¹ / ₃₂	16.0
60525	60625	1	2 1/8	1 ³⁹ / ₆₄	1 11/16	1/8	5/8	24.0
60530	60630	1-1/4	2 1/2	1 ²⁵ / ₃₂	2	1/8	3/4	30.0
60535	60635	1-1/2	3	2 ⁵ / ₃₂	2 3/8	1/8	3/4	48.0
60540	60640	2	3 1/2	2 ³⁷ / ₆₄	2 7/8	5/32	2 ⁷ / ₃₂	69.0
60545	60645***	2-1/2	4 1/4	3 ⁷ / ₃₂	3 1/2	1/4	1	134.0
60550	60650***	3	4 3/4	3 ⁵⁹ / ₆₄	4 1/8	1/4	1	162.0
60560	60660	4	5 3/4	4 ¹³ / ₁₆	5 1/8	5/16	1 ⁷ / ₃₂	234.0

SA181 Class 60 Rated.

***These products will be discontinued when stock is depleted.

Stainless Steel Standard Heavy Flange Straight Pilot

- Forged
- 316 Stainless Steel



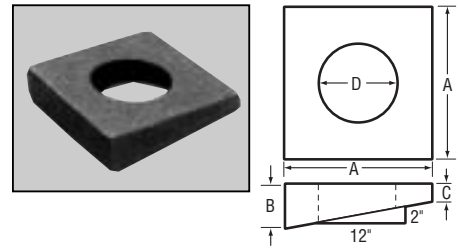
Stock No.	Pipe Size	A	B	E	F	H	I	Approx. Wt. Per 100 Pcs.
SS60305	1/4	1 1/2	1	1 ⁵ / ₁₆	3/32	9/16	1/4	12.0
SS60310	3/8	1 1/2	1	1 ⁵ / ₁₆	3/32	9/16	1/4	12.0
SS60315	1/2	1 3/4	1 3/16	1 1/8	3/32	5/8	1/4	17.0
SS60320	3/4	2 1/8	1 ⁷ / ₁₆	1 3/8	3/32	1 ¹ / ₁₆	1/4	23.0
SS60325	1	2 3/8	1 3/4	1 ²¹ / ₃₂	3/32	3/4	1/4	36.0
SS60330	1-1/4	2 ¹¹ / ₁₆	2 1/8	2	3/32	3/4	1/4	45.0
SS60335	1-1/2	3	2 3/8	2 1/4	3/32	3/4	1/4	53.0
SS60340	2	3 1/2	2 7/8	2 5/8	3/32	2 ⁷ / ₃₂	1/4	74.0
SS60345	2-1/2	4 1/16	3 3/32	3 ⁵ / ₃₂	1/8	1	3/16	110.0
SS60350	3	4 5/8	3 ¹⁵ / ₁₆	3 ² / ₃₂	1/8	1	3/16	126.0

Miscellaneous

Stock No.	Bolt Dia.	A	B	C	D	Approx. Wt. Per 100 Pcs.
70005***	1/4	1 ¹ / ₁₆	7/32	5/64	5/16	1.6
70010***	5/16	1 ¹ / ₁₆	9/16	9/64	3/8	6.0
70015	3/8	1 ¹ / ₄	1 ¹ / ₃₂	5/32	7/16	9.5
70020	1/2	1 ¹ / ₄	1 ¹ / ₃₂	5/32	9/16	10.2
70025	5/8	1 ¹ / ₂	1 ³ / ₃₂	5/32	1 ¹ / ₁₆	15.4
70030	3/4	1 ¹ / ₂	1 ⁵ / ₃₂	7/32	1 ³ / ₁₆	16.4
70035***	7/8	2	9/16	7/32	1 ⁵ / ₁₆	34.2
70040	1	2	9/16	7/32	1 ³ / ₃₂	32.5
70045***	1-1/8	2 ¹ / ₄	5/8	9/32	1 ³ / ₁₆	50.0
70050***	1-1/4	2 ¹ / ₂	2 ³ / ₃₂	5/16	1 ⁵ / ₁₆	75.0

***These products will be discontinued when stock is depleted.

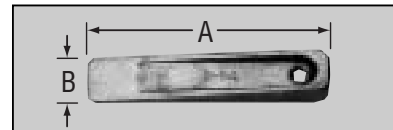
Malleable Bevel Washers



Stock No.	Length A	Width B	Max. Thickness	Approx. Wt. Per 100 Pcs.
16910	3	1	1/4	20.0
16911	5	1	1/2	37.5
16912	6	1 ¹ / ₄	3/4	55.0

Set-up Wedges

• Forged



Stock No.	Length A	Width B	Max. Thickness	Approx. Wt. Per 100 Pcs.
16915	5	1	3/4	90.0
16920	6	2	1 ¹ / ₂	134.0

Wedge Shims

• Forged



Stock No.	Size	Angle	Approx. Wt. Per 100 Pcs.
90301	3/16 x 2 x 2 x 2	90°	34.3

All hole diameters 5/8"; slots 5/8"x1".

Wall Angle Brackets

• Hot Galvanized



Miscellaneous

Plastic Yoke • Reinforced



Stock No.	Thread T	A	B	D	E	F	G	H	K	Approx. Wt. Per 100 Pcs.
69000	10-32	1.5625	.3125	1.000	.1875	.4375	.1875	.5625	.375	1.0
69005	1/4-28	2.000	.4375	1.250	.2812	.6250	.250	.750	.500	2.0
69010	5/16-24	2.250	.500	1.4375	.3437	.750	.3125	.8125	.5937	3.5
69015	3/8-24	2.500	.6250	1.6250	.4375	.8750	.375	.894	.6875	5.0
69020	1/2-20	3.000	.8126	1.8750	.5625	1.125	.500	1.125	.9375	10.0

Fabricated from a special compound by Celanese® of 40% fiberglass and 60% nylon, into which heat treated spring steel inserts are imbedded. Patented.



Forged Adjustable Yoke Ends • Carbon Steel



Stock No.	Thread T	A	B	D	E	F	G	H	K	Approx. Wt. Per 100 Pcs.
69105	1/4-28	2	7/16	1 1/4	9/32	5/8	1/4	3/4	1/2	7.0
69110	5/16-24	2 1/4	1/2	1 7/16	1 1/32	3/4	5/16	13/16	19/32	11.0
69115	3/8-24	2 1/2	5/8	1 5/8	7/16	7/8	3/8	7/8	1 1/16	17.0
69120	7/16-20	2 7/8	23/32	1 7/8	1/2	1	7/16	1	13/16	24.0
69122	1/2-13	3	1 3/16	1 7/8	9/16	1 1/8	1/2	1 1/8	1 5/16	39.0
69124	1/2-20LH	3	1 3/16	1 7/8	9/16	1 1/8	1/2	1 1/8	1 5/16	39.0
69125	1/2-20	3	1 3/16	1 7/8	9/16	1 1/8	1/2	1 1/8	1 5/16	39.0
69126	1/2-20	4 3/16	1 3/16	3 1/16	9/16	1 1/8	1/2	1 1/8	1 5/16	44.0
69130	5/8-18	4 15/16	1 1/16	3 11/16	1 1/16	1 3/8	5/8	1 1/4	1 3/16	75.0
69132	5/8-11	4 15/16	1 1/16	3 11/16	1 1/16	1 3/8	5/8	1 1/4	1 3/16	75.0
69135	3/4-16	6 1/16	1 1/4	4 9/16	1 3/16	1 5/8	3/4	1 1/2	1 7/16	125.0
69136	3/4-10	4	1 1/8	2 3/4	1 1/16	1 1/2	5/8	1 1/4	1 3/8	76.0
69137	3/4-10	6 1/16	1 1/4	4 9/16	1 3/16	1 5/8	3/4	1 1/2	1 7/16	125.0
69138	3/4-16	4	1 1/8	2 3/4	1 1/16	1 1/2	5/8	1 1/4	1 3/8	76.0

UNC Course Threads available upon request. Zinc plating available. Call for quote.

Plain Yoke Ends • Forged • Carbon Steel • Self-Colored

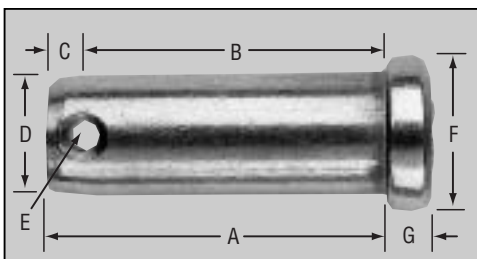


Stock No.	Diameter	A	B	C	D	E	F	G	H	K	Approx. Wt. Per 100 Pcs.
69305***	1/4	1 3/4	1/4	1 9/32	5/8	9/32	5/8	1 1/4	1 1/8	1/2	16.0
69310	5/16	2	5/16	1 7/16	3/4	1 1/32	3/4	5/16	1 1/4	1 9/32	18.0
69315	3/8	2 1/8	3/8	1 33/64	27/32	7/16	7/8	3/8	1 9/32	1 1/16	28.0
69317	3/8	7	3/8	1 33/64	27/32	7/16	7/8	3/8	1 9/32	1 1/16	58.0
69320	7/16	2 1/4	7/16	1 33/64	1	1/2	1	7/16	1 1/4	1 3/16	39.0
69322	7/16	3 1/2	7/16	1 33/64	1	1/2	1	7/16	1 1/4	1 3/16	45.0
69325	1/2	2 1/2	1/2	1 11/16	1 1/8	9/16	1 1/8	1/2	1 3/8	1 5/16	51.0
69326	1/2	6 1/2	1/2	5 11/16	1 1/8	9/16	1 1/8	1/2	5 3/8	1 5/16	83.0
69330	5/8	2 7/8	5/8	1 53/64	1 7/16	1 1/16	1 3/8	5/8	1 7/16	1 3/16	76.0
69332	5/8	4 3/4	5/8	1 53/64	1 7/16	1 1/16	1 3/8	5/8	1 7/16	1 3/16	101.0
69335	3/4	3 5/8	3/4	2 25/64	1 11/16	1 3/16	1 5/8	3/4	1 15/16	1 7/16	128.0
69337	3/4	8 1/4	3/4	2 25/64	1 11/16	1 3/16	1 5/8	3/4	1 15/16	1 7/16	209.0
69345	1	6	1	3 3/64	2 1/2	1 1/16	2 1/8	1	3 1/2	1 15/16	340.0

Refer to line drawing above for dimensional reference.

***These products will be discontinued when stock is depleted.

Clevis Pins • Cold Headed • Self-Colored* • For Yoke Ends



Stock No.	A	B	C	D	E	F	G	Approx. Wt. Per 100 Pcs.
98305	49/64	49/64	3/32	1/4	5/64	3/8	3/32	1.4
98310	15/16	13/16	1/8	5/16	7/64	7/16	3/32	2.5
98315	1 1/16	1 5/16	1/8	3/8	7/64	1/2	1/8	4.0
98320	1 1/4	1 1/16	1/8	7/16	7/64	9/16	5/32	6.4
98325	1 23/64	1 13/64	5/32	1/2	9/64	5/8	5/32	9.0
98330	1 39/64	1 29/64	5/32	5/8	9/64	13/16	13/64	17.2
98335	1 29/32	1 23/32	3/16	3/4	1 1/64	15/16	1/4	28.8
98340	1 27/32	1 19/32	9/64	5/8	9/64	13/16	13/64	100.0

*Zinc plating available. Call for quote.

Miscellaneous

Stock No.	Overall Length A	Width of Pad B	Shank Dia. C	Length of Shank D	Thickness of Pad	Approx. Wt. Per 100 Pcs.
66310***	4 ¹³ / ₁₆	1 ¹ / ₂	³ / ₈	3	¹ / ₈	33.0

***This product will be discontinued when stock is depleted.

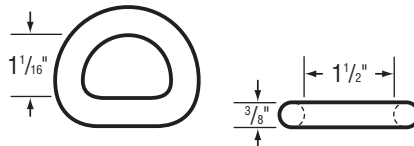
Stock No.	Overall Length A	Width of Pad B	Shank Dia. C	Length of Shank D	Thickness of Pad	Approx. Wt. Per 100 Pcs.
66410	8 ³ / ₄	1	³ / ₈	5 ¹ / ₄	⁵ / ₃₂	92.0
66420	6 ³ / ₄	1 ¹ / ₄	¹ / ₂	3 ³ / ₄	⁵ / ₃₂	115.0
66430***	5	1 ¹ / ₄	³ / ₈	2 ¹ / ₂	⁵ / ₁₆	74.0

***This product will be discontinued when stock is depleted.

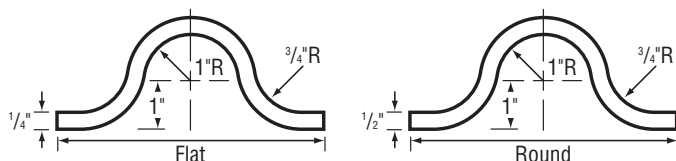
Stock No.	Length from Center of T A	Size of T		Shank Dia. D	Approx. Wt. Per 100 Pcs.
		B	C		
66000	2 ¹ / ₂	¹ / ₄ x	1 ¹ / ₄	¹ / ₄	13.0
66005***	2	³ / ₈ x	2	³ / ₈	25.0
66010	2 ¹ / ₂	³ / ₈ x	1 ¹ / ₄	³ / ₈	30.0
66020	2 ¹ / ₂	³ / ₈ x	2	³ / ₈	22.0
66025	5	³ / ₈ x	1 ³ / ₄	³ / ₈	41.0
66030	3 ¹ / ₂	¹ / ₂ x	1 ⁷ / ₈	¹ / ₂	47.0
66035	6	¹ / ₂ x	3	¹ / ₂	95.0
66040***	3 ¹ / ₂	¹ / ₂ x	2	¹ / ₂	47.0
66045***	2 ¹ / ₄	⁵ / ₈ x	2 ¹ / ₂	⁵ / ₈	65.0

***These products will be discontinued when stock is depleted.

Stock No.	Maximum I.D. Eye	Minimum I.D. Eye	Thickness	Approx. Wt. Per 100 Pcs.
43000	1 ¹ / ₁₆	1 ¹ / ₂	³ / ₈	33.0

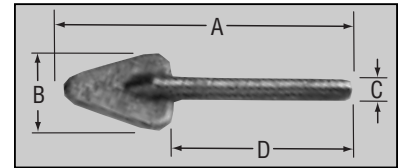


Stock No.	Size	Approx. Wt. Per 100 Pcs.
62000	Flat ¹ / ₄ x 1	50.0
62100	¹ / ₂ Round	50.0



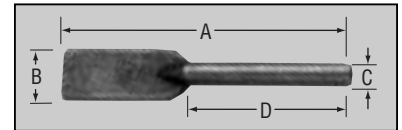
Strap Ends

- Forged • Carbon Steel
- Self-Colored



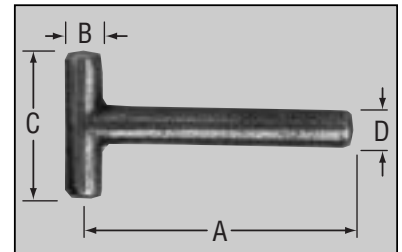
Strap Ends

- Forged • Carbon Steel
- Self-Colored



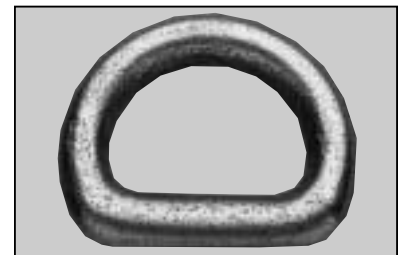
Tee Bolts

- Forged • Carbon Steel
- Self-Colored



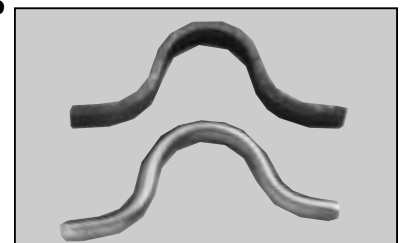
Tarpaulin Ring

- Forged • Carbon Steel
- Self-Colored



Lifting Lugs

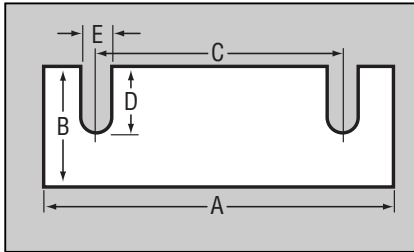
- Forged
- Carbon Steel
- Self-Colored



Elevator Maintenance Hardware

Elevator Rail Shims

• Double Slot



NOTE: All products on this page will be discontinued when inventory is depleted.

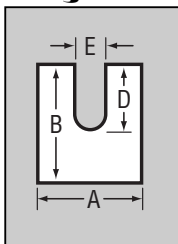
Stock No.	Thick-ness	Width B	Length A	Slot Dim.		Center to Center of Slots C	Wt. Per 100 in Lbs.
				E	D		
95040	1/64	2	6	9/16	x 1 1/8	4 3/8	11.0
95140	1/32	2	6	9/16	x 1 1/8	4 3/8	11.0
95041	1/16	2	6	9/16	x 1 1/8	4 3/8	21.0
95042	1/8	2	6	9/16	x 1 1/8	4 3/8	43.0
95043	1/64	2	6 1/2	9/16	x 1 5/16	4 5/8	12.0
95143	1/32	2	6 1/2	9/16	x 1 5/16	4 5/8	12.0
95044	1/16	2	6 1/2	9/16	x 1 5/16	4 5/8	23.0
95045	1/8	2	6 1/2	9/16	x 1 5/16	4 5/8	46.0
95046	1/64	2 1/2	6 1/2	3/4	x 1 3/4	4 5/8	14.0
95146	1/32	2 1/2	6 1/2	3/4	x 1 3/4	4 5/8	14.0
95047	1/16	2 1/2	6 1/2	3/4	x 1 3/4	4 5/8	29.0
95048	1/8	2 1/2	6 1/2	3/4	x 1 3/4	4 5/8	58.0
95049	1/64	2	8 1/2	1 1/16	x 1 3/8	6 3/8	15.0
95149	1/32	2	8 1/2	1 1/16	x 1 3/8	6 3/8	15.0
95060	1/16	2	8 1/2	1 1/16	x 1 3/8	6 3/8	30.0
95061	1/8	2	8 1/2	1 1/16	x 1 3/8	6 3/8	60.0
95062	1/64	2 1/2	8 1/2	3/4	x 1 5/8	6 1/2	19.0
95162	1/32	2 1/2	8 1/2	3/4	x 1 5/8	6 1/2	19.0
95063	1/16	2 1/2	8 1/2	3/4	x 1 5/8	6 1/2	38.0
95064	1/8	2 1/2	8 1/2	3/4	x 1 5/8	6 1/2	75.0
95065	1/64	2 1/2	9	3/4	x 1 9/16	6 3/8	20.0
95165	1/32	2 1/2	9	3/4	x 1 9/16	6 3/8	20.0
95066	1/16	2 1/2	9	3/4	x 1 9/16	6 3/8	40.0
95067	1/8	2 1/2	9	3/4	x 1 9/16	6 3/8	80.0
95068	1/64	3	9	3/4	x 1 9/16	6 3/8	24.0
95168	1/32	3	9	3/4	x 1 9/16	6 3/8	24.0
95069	1/16	3	9	3/4	x 1 9/16	6 3/8	48.0
95070	1/8	3	9	3/4	x 1 9/16	6 3/8	96.0
95080	1/16	3	9 7/8	1 3/16	x 2	6 5/16	46.0
95081	1/8	3	9 7/8	1 3/16	x 2	6 5/16	93.0
95083	1/16	3 3/4	10 1/2	1 3/16	x 2 1/4	7 1/2	59.0
95084	1/8	3 3/4	10 1/2	1 3/16	x 2 1/4	7 1/2	130.0

Standard Packaging:

1/64" — 200 per bundle.
 1/32" — 100 per bundle.
 1/16" — 50 per bundle.
 1/8" — 25 per bundle.

Elevator Rail Shims

• Single Slot



Stock No.	Thick-ness	Width B	Length A	Slot Dim.		Wt. Per 100 in Lbs.
				E	D	
95071	1/64	3	3	1 3/16	x 2	4.0
95171	1/32	3	3	1 3/16	x 2	7.0
95072	1/16	3	3	1 3/16	x 2	13.0
95073	1/8	3	3	1 3/16	x 2	26.0

Standard Packaging:

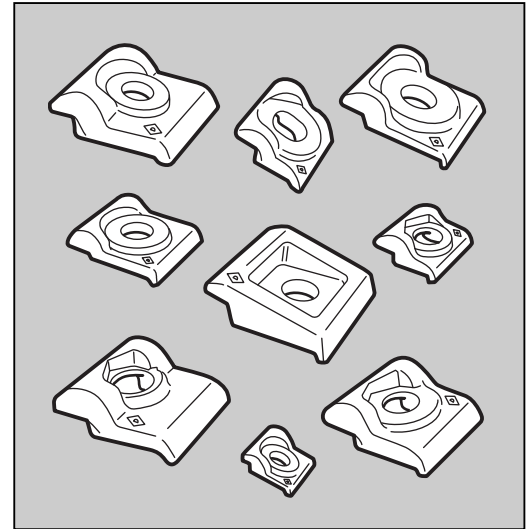
1/64" — 200 per bundle.
 1/32" — 100 per bundle.
 1/16" — 50 per bundle.
 1/8" — 25 per bundle.

Elevator Maintenance Hardware

Stock No.	Guide	Bolt Size	Outside Measurements			Approx. Wt. Per 100 Pcs.
91011	8#	1/2	1 5/8	x	1 3/4	25.0
91021	8#	1/2	1 1/4	x	1 1/2	13.0
91002	15#	5/8	2 1/8	x	2 3/16	61.0
91022	15#	5/8	2 1/8	x	2 1/4	45.0
91032	15#	5/8	2	x	2	44.0
91023	30#	3/4	2 3/4	x	3	120.0

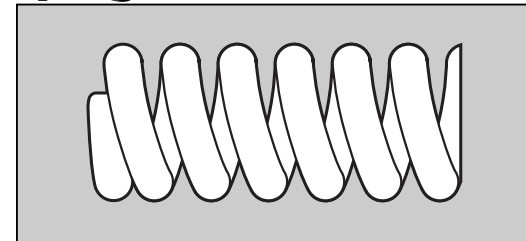
NOTE: All products on this page will be discontinued when inventory is depleted.

Rail Clips • Forged



Stock No.	Wire Dia.	Inside Dia.	Overall Length	No. of Coils	Rate of Compression		Weight Each Lbs.
					Inch Pounds	Total Overall Pounds	
90700	3/8	7/8	4 1/8	9	2050	1540	1.06
90701	3/8	15/16	6	12	1175	1540	1.63
90702	3/8	1 1/8	5	9	1025	1280	1.46
90710	1/2	1 1/8	4	7	3630	2270	1.94
90711	1/2	1 1/8	4 3/4	7	3460	4325	2.00
90712	1/2	1 3/8	6 1/8	8	1910	4060	2.63

Springs for Socket Bolts



Limited Warranty

Edward W. Daniel LLC warrants that these products conform to industry standards specified herein and will be free from defects in material and workmanship. This warranty is expressly given in lieu of any and all other expressed or implied warranties, including any implied warranty of merchantability or fitness for a particular purpose, and in lieu of any other obligation on the part of the Edward W. Daniel LLC. Edward W. Daniel LLC will, at its option, repair or replace free of charge (excluding shipping and handling charges) any products which have not been subject to misuse, abuse, or modification and which in its sole determination were not manufactured in compliance with the warranty given above.

The remedy provided for herein shall be the exclusive remedy for any breach of warranty or any claim arising in any way out of the manufacture, sale, or use of these products. In no event shall Edward W. Daniel LLC be liable for consequential, incidental, or any other damages of any nature whatsoever except those specifically provided herein for any breach of warranty or any other claim arising in any way out of the manufacture, sale, or use of these products. No other person is authorized by Edward W. Daniel LLC to give any other warranty, written or oral, pertaining to these products.

© Copyright 2004 Edward W. Daniel LLC

To Place an Order or for More Information Please Call
1-800-338-2658 or visit our website at www.ewdaniel.com

CLEVELAND

11700 Harvard Avenue
Cleveland, OH 44105
Phone: 216/295-2750
1-800-338-BOLT (2658)
Fax: 216/295-2758
Toll Free Fax: 1-800-683-0426

**SOUTH CENTRAL
SALES OFFICE/WAREHOUSE**

3605 Willowbend Blvd.
Unit #550
Houston, TX 77054
Phone: 713/662-3399
Fax: 713/662-3335



Visit our web site
and order on-line
www.ewdaniel.com



Edward W. Daniel LLC



National Fastener
Distributors Association