

# VIBRATION DAMPING COMPONENTS

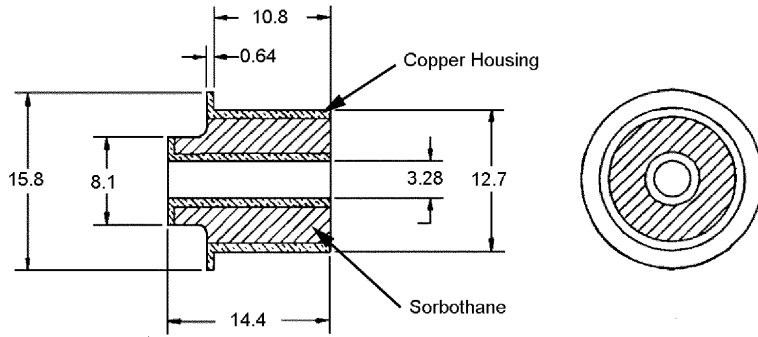
## Table of Contents

<b>MULTI-AXIS ISOLATOR</b> .....	<b>MH 2</b>
<b>BUSHINGS</b> .....	<b>MH 3</b>
<b>ISOLATION RINGS/PADS</b> .....	<b>MH 4</b>
<b>HEMISPHERES</b> .....	<b>MH 5</b>

# MULTI-AXIS ISOLATOR

## MATERIAL

### SORBOTHANE AND COPPER



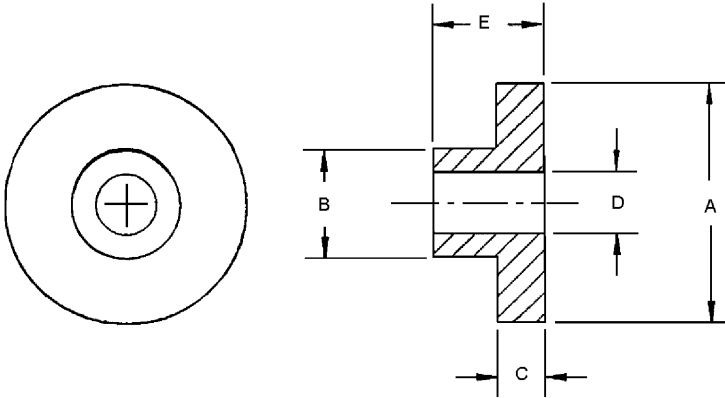
Ideal for applications involving drive units, the Sorbothane is encapsulated in a copper housing. The isolator provides attenuation of vibration and shock in any direction. Simply use pins to locate your unit inside the copper housing.

STOCK NO.
SMAI-1

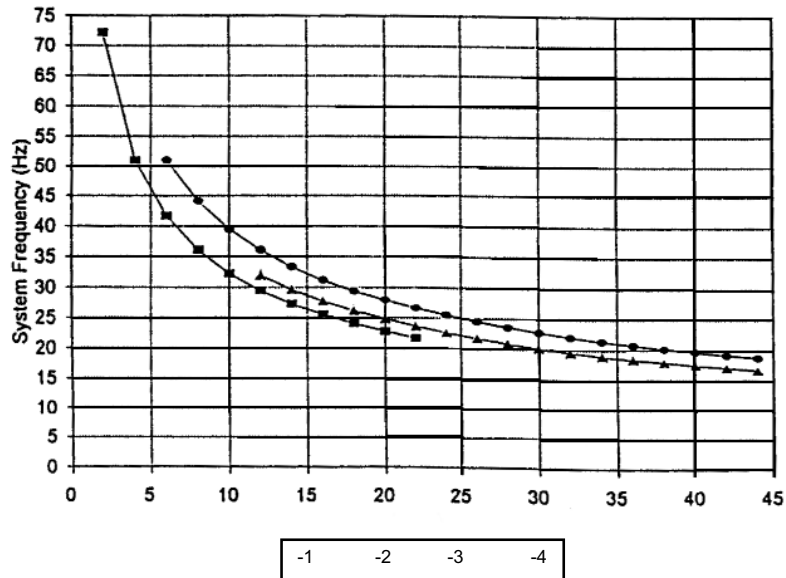
# BUSHINGS

MATERIAL

**SORBOTHANE**



STOCK NO.	A	B	C	D	E	LOAD PER BUSHING (N) 70 DUROMETER
SB-1	19.0	12.7	3.8	6.4	5.6	35.6 - 93.4
SB-2	25.4	11.7	4.8	7.2	7.9	89.0 - 186.8
SB-3	25.4	-	4.8	11.4	4.8	35.6 - 48.9
SB-4	25.4	11.4	4.8	6.4	15.2	124.6 - 195.7

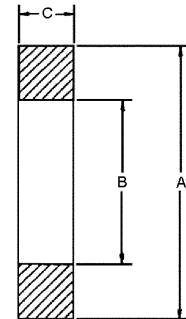
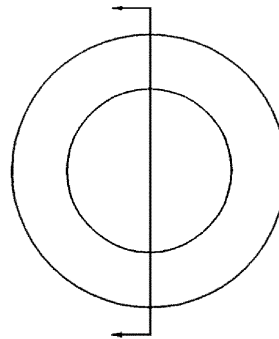
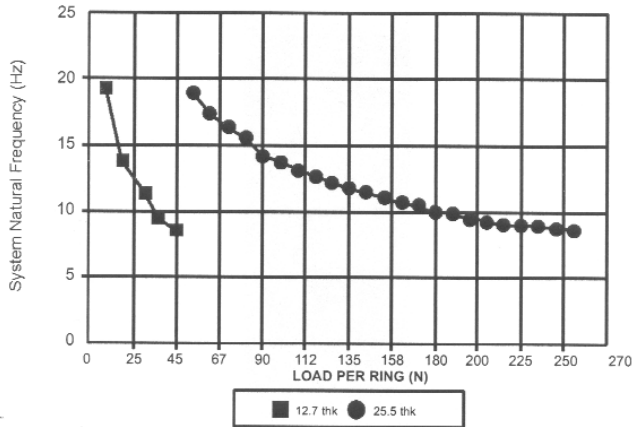


Sorbothane bushings isolate vibration and absorb shock for delicate electronics and other light weight applications. Using two bushings together, you can create a floating bolt which isolates your unit from any metal to metal contact. To achieve this floating bolt, use two pieces of stock numbers SB-1 or SB-2 respectively and one piece each of part numbers SB-3 and SB-4 together. Different durometers allow for different spring rates. Load ratings assume a 10% torsional deflection of the bushing material.

H

# ISOLATION RINGS

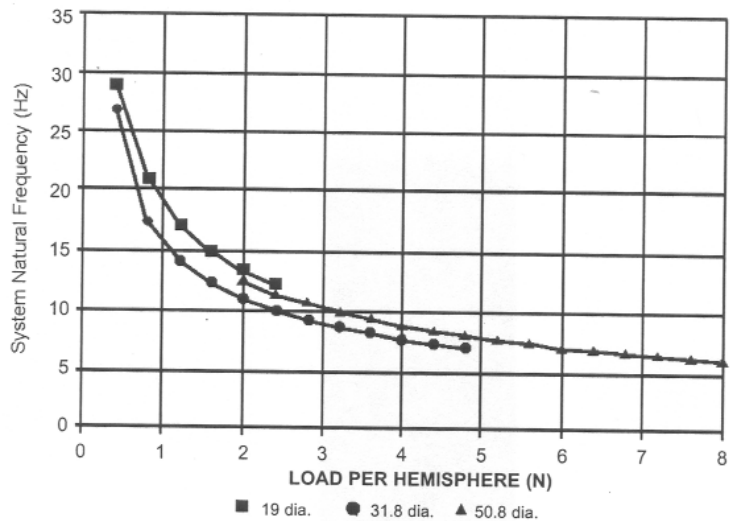
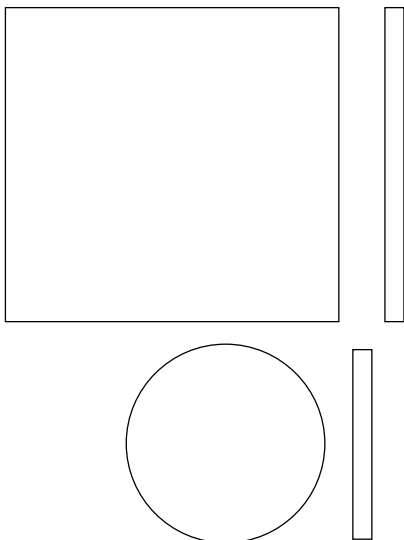
MATERIAL
<b>SORBOTHANE</b>



STOCK NO.	A	B	C	LOAD PER RING (N) 70 DUROMETER
SIR-1	127	78.7	12.7	20 - 29
SIR-2	127	78.7	25.5	119 - 245

# ISOLATION PADS

MATERIAL
<b>SORBOTHANE</b>



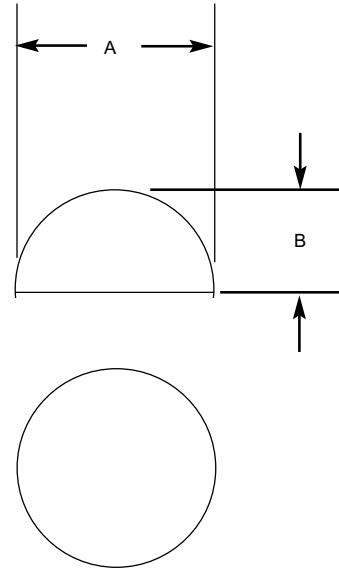
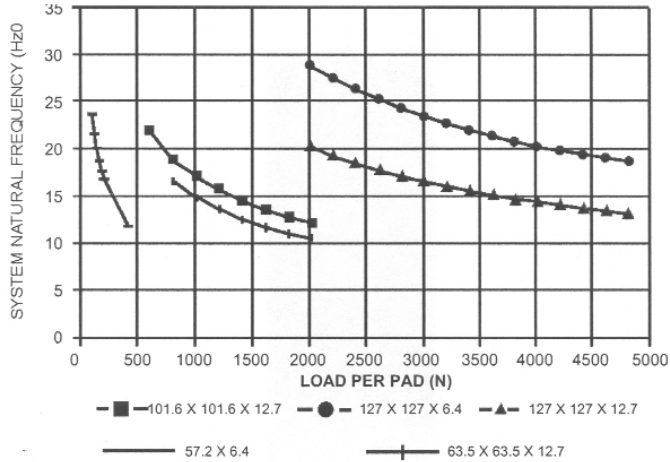
STOCK NO.	DESCRIPTION	LOAD PER PAD (N) 70 DUROMETER SHORE SCALE 00
SIP-1	101.6 X 101.6 X 12.7	1280-2000
SIP-2	127 X 127 X 6.4	2400-4800
SIP-3	127 X 127 X 12.7	3000-4800
SIP-4	63.5 X 63.5 X 12.7	1440-1920
SIP-5	57.2 X 6.4	160-240

A wide range of loads can be isolated by choosing the correct thickness, durometer and varying the number of pads. The pads are designed to offer isolation for all types of static and dynamic systems. Higher disturbing frequencies and lower temperatures are parameters that indicate the need for a lower durometer pad. Ideal for applications with heavier loads.

# HEMISPHERES

MATERIAL

SORBOTHANE



STOCK NO.		A	B	LOAD PER HEMISPHERE (N) 70 DUROMETER SHORE SCALE 00
Backing				
Without Adhesive	With Adhesive			
SH-1	SH-1-A	19.0	9.5	2 - 2.5
SH-2	SH-2-A	31.8	15.8	3 - 5
SH-3	SH-3-A	50.8	25.5	5 - 8.5
SH-4	SH-4-A	50.8	25.5	6 - 8.5

Sorbothane Hemisphere mounts provide a quick cost effective method of isolating bench equipment and small machinery. Simply place the hemisphere under the unit to be isolated with the curved surface up. Expect a 25 to 30% deflection when statically loaded.

H

