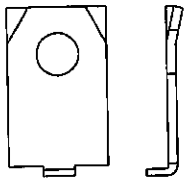
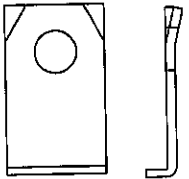
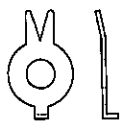
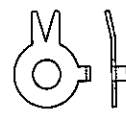
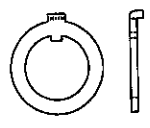
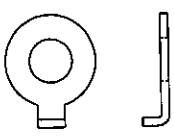
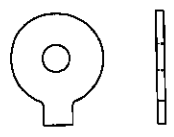
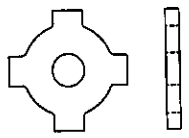
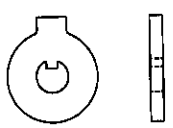
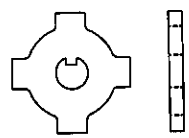
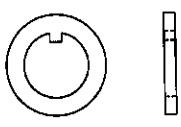
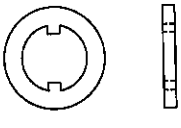
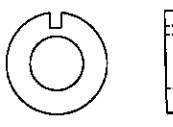
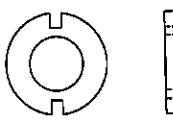
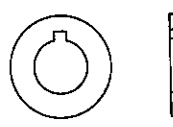
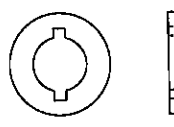


# ILLUSTRATED TABLE OF CONTENTS

## TAB, KEY AND NOTCH WASHERS

| TYPICAL CONFIGURATION   | PART NUMBER | PAGE NUMBER |
|---|-------------|-------------|
|    | 5748        | 478         |
|    | 5749        | 479         |
|   | 5745        | 480         |
|  | 5745        | 480         |
|  | 5739        | 480         |
|  | 5740        | 481         |
|  | 5741        | 482         |

| TYPICAL CONFIGURATION  | PART NUMBER | PAGE NUMBER |
|--|-------------|-------------|
|    | 5742        | 483         |
|    | 5744        | 484         |
|    | 5743        | 484         |
|   | 5746        | 485         |
|  | 5747        | 485         |
|  | 5753        | 486         |
|  | 5754        | 486         |
|  | 5750        | 487         |
|  | 5751        | 487         |

Solder Lugs

Spring Clips

Spring Washers

Shoulder Washers

Stand Off Spacers

Flat Round Washers - Metallic

Flat Round Washers - Non-Metallic

O-Rings

Retaining Rings

Lockwashers, Retention Washers & Push-on Nuts

Clamps & Brackets

Expansion Plugs

Ground Straps, Bus Bars & Term. Blocks

Tab & Notch Washers

Misc. Washers & Tags

Solid State Insulators

Military Standards

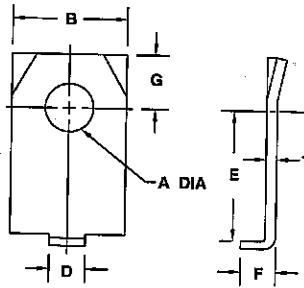
Custom Parts

Engineering Tables

Num. & Alpha. Index of Parts

# TAB LOCK WASHERS

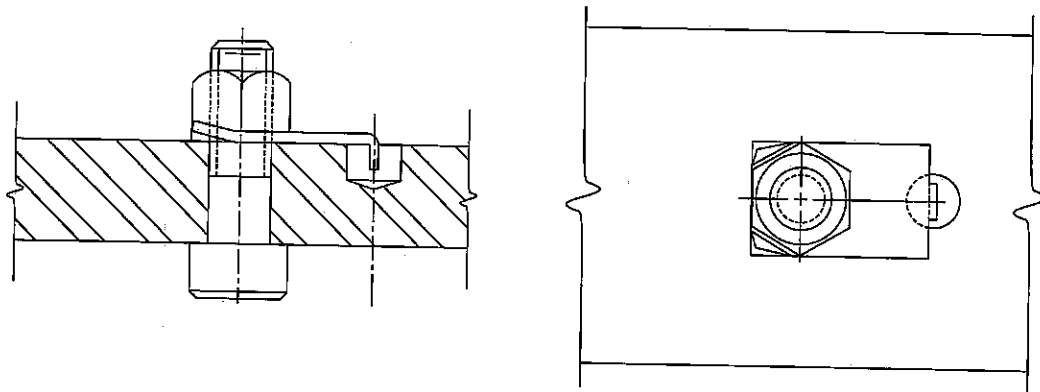
Custom Sizes Available . . . See Last Page of This Section



**NOTE:** Unless stated, all catalog parts are supplied without finish. See page 545 for specifying finishes.

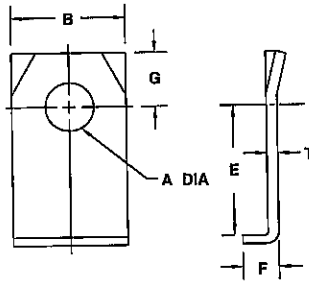
\*Add - 1 to part number for cold rolled steel.  
Add - 2 to part number for stainless steel.

| PART NUMBER | SCREW SIZE | A<br>± .005 | B<br>± .010 | T    | D<br>± .005 | E<br>± .010 | F<br>± .010 | G<br>± .005 |
|-------------|------------|-------------|-------------|------|-------------|-------------|-------------|-------------|
| 5748-4-1-*  | 4          | .120        | .275        | .010 | .093        | .187        | .125        | .125        |
| 5748-4-2-*  | 4          | .120        | .275        | .010 | .093        | .250        | .125        | .125        |
| 5748-4-3-*  | 4          | .120        | .275        | .010 | .093        | .375        | .125        | .125        |
| 5748-6-1-*  | 6          | .146        | .344        | .015 | .125        | .250        | .125        | .156        |
| 5748-6-2-*  | 6          | .146        | .344        | .015 | .125        | .312        | .125        | .156        |
| 5748-6-3-*  | 6          | .146        | .344        | .015 | .125        | .500        | .125        | .156        |
| 5748-8-1-*  | 8          | .174        | .378        | .015 | .125        | .375        | .125        | .172        |
| 5748-8-2-*  | 8          | .174        | .378        | .015 | .125        | .437        | .125        | .172        |
| 5748-8-3-*  | 8          | .174        | .378        | .015 | .125        | .500        | .125        | .172        |
| 5748-10-1-* | 10         | .203        | .413        | .018 | .125        | .375        | .156        | .187        |
| 5748-10-2-* | 10         | .203        | .413        | .018 | .125        | .437        | .156        | .187        |
| 5748-10-3-* | 10         | .203        | .413        | .018 | .125        | .562        | .156        | .187        |
| 5748-14-1-* | 1/4        | .265        | .482        | .024 | .125        | .437        | .156        | .218        |
| 5748-14-2-* | 1/4        | .265        | .482        | .024 | .125        | .500        | .156        | .218        |
| 5748-14-3-* | 1/4        | .265        | .482        | .024 | .125        | .625        | .156        | .218        |
| 5748-16-1-* | 5/16       | .328        | .621        | .024 | .125        | .437        | .187        | .281        |
| 5748-16-2-* | 5/16       | .328        | .621        | .024 | .125        | .562        | .187        | .281        |
| 5748-16-3-* | 5/16       | .328        | .621        | .024 | .125        | .750        | .187        | .281        |



# TAB LOCK WASHERS *(Continued)*

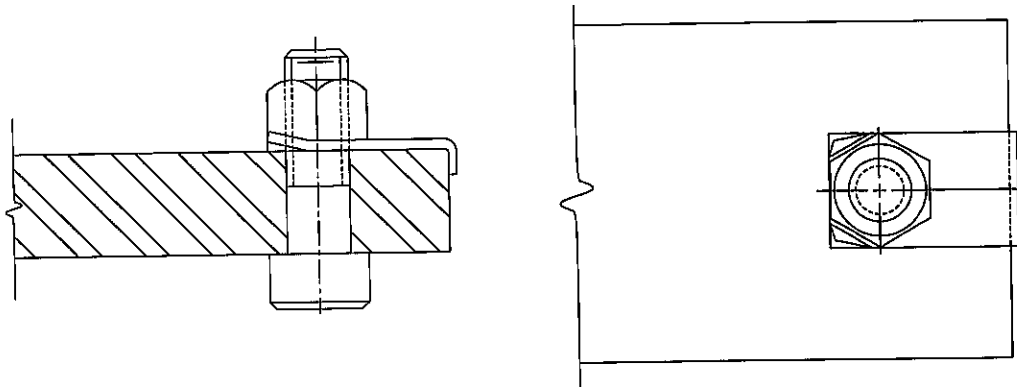
*Custom Sizes Available . . . See Last Page of This Section*



**NOTE:** Unless stated, all catalog parts are supplied without finish. See page 545 for specifying finishes.

\*Add - 1 to part number for cold rolled steel.  
Add - 2 to part number for stainless steel.

| PART NUMBER | SCREW SIZE | A<br>± .005 | B<br>± .010 | T    | E<br>± .010 | F<br>± .010 | G<br>± .005 |
|-------------|------------|-------------|-------------|------|-------------|-------------|-------------|
| 5749-4-1-*  | 4          | .120        | .275        | .010 | .187        | .125        | .125        |
| 5749-4-2-*  | 4          | .120        | .275        | .010 | .250        | .125        | .125        |
| 5749-4-3-*  | 4          | .120        | .275        | .010 | .375        | .125        | .125        |
| 5749-6-1-*  | 6          | .146        | .344        | .015 | .250        | .125        | .156        |
| 5749-6-2-*  | 6          | .146        | .344        | .015 | .312        | .125        | .156        |
| 5749-6-3-*  | 6          | .146        | .344        | .015 | .500        | .125        | .156        |
| 5749-8-1-*  | 8          | .174        | .378        | .015 | .375        | .125        | .172        |
| 5749-8-2-*  | 8          | .174        | .378        | .015 | .437        | .125        | .172        |
| 5749-8-3-*  | 8          | .174        | .378        | .015 | .500        | .125        | .172        |
| 5749-10-1-* | 10         | .203        | .413        | .018 | .375        | .156        | .187        |
| 5749-10-2-* | 10         | .203        | .413        | .018 | .437        | .156        | .187        |
| 5749-10-3-* | 10         | .203        | .413        | .018 | .562        | .156        | .187        |
| 5749-14-1-* | 1/4        | .265        | .482        | .024 | .437        | .156        | .218        |
| 5749-14-2-* | 1/4        | .265        | .482        | .024 | .500        | .156        | .218        |
| 5749-14-3-* | 1/4        | .265        | .482        | .024 | .625        | .156        | .218        |
| 5749-16-1-* | 5/16       | .328        | .621        | .024 | .437        | .187        | .281        |
| 5749-16-2-* | 5/16       | .328        | .621        | .024 | .562        | .187        | .281        |
| 5749-16-3-* | 5/16       | .328        | .621        | .024 | .750        | .187        | .281        |



Solder Lugs

Spring Clips

Spring Washers

Shoulder Washers

Stand Off Spacers

Flat Round Washers - Metallic

Flat Round Washers - Non-Metallic

O-Rings

Retaining Rings

Lockwashers, Retention Washers & Push-on Nuts

Clamps & Brackets

Expansion Plugs

Ground Straps, Bus Bars & Term. Blocks

Tab & Notch Washers

Misc. Washers & Tags

Solid State Insulators

Military Standards

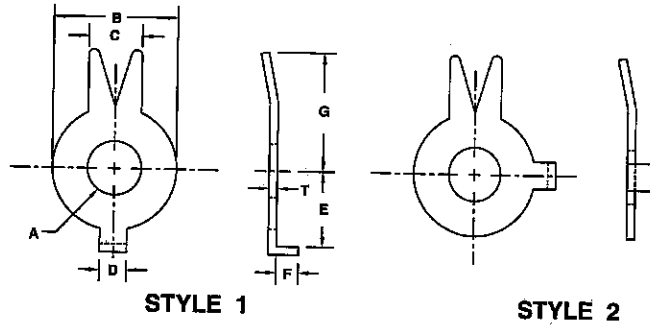
Custom Parts

Engineering Tables

Num. & Alpha. Index of Parts

# TAB LOCK WASHERS STEEL

Custom Sizes Available . . . See Last Page of This Section

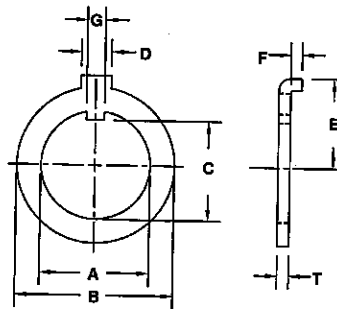


**NOTE:** Unless stated, all catalog parts are supplied without finish. See page 545 for specifying finishes.

| PART NUMBER | SCREW STYLE | A<br>±.005 | B<br>±.010 | C<br>±.010 | D<br>±.007 | E<br>±.010 | F<br>±.010 | G<br>±.030 | T    |
|-------------|-------------|------------|------------|------------|------------|------------|------------|------------|------|
| 5745-1      | 1           | .177       | .305       | .165       | .113       | .226       | .065       | .240       | .025 |
| 5745-2      | 1           | .195       | .375       | .205       | .113       | .226       | .100       | .295       | .025 |
| 5745-3      | 1           | .203       | .340       | .192       | .113       | .226       | .080       | .280       | .030 |
| 5745-4      | 1           | .259       | .345       | .195       | .103       | .240       | .055       | .240       | .010 |
| 5745-5      | 1           | .327       | .530       | .300       | .140       | .320       | .100       | .425       | .030 |
| 5745-6      | 1           | .392       | .641       | .325       | .289       | .445       | .085       | .485       | .030 |
| 5745-7      | 1           | .450       | .690       | .395       | .173       | .420       | .155       | .530       | .036 |
| 5745-8      | 2           | .255       | .445       | .255       | .113       | .270       | .105       | .355       | .030 |

# INTERNAL TAB FORMED KEY WASHERS – STEEL

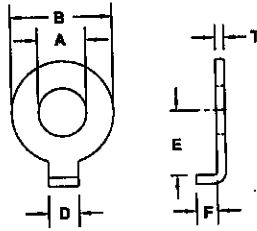
Custom Sizes Available . . . See Last Page of This Section



| PART NUMBER | A<br>±.005 | B<br>±.015 | C<br>±.007 | D<br>±.010 | E<br>±.010 | F<br>±.015 | G<br>±.007 | T    |
|-------------|------------|------------|------------|------------|------------|------------|------------|------|
| 5739-4      | .257       | .340       | .230       | .062       | .203       | .094       | .042       | .030 |
| 5739-3      | .257       | .406       | .221       | .062       | .264       | .050       | .046       | .030 |
| 5739-5      | .378       | .520       | .351       | .110       | .351       | .060       | .057       | .030 |
| 5739-1      | .475       | .719       | .437       | .115       | .392       | .050       | .062       | .042 |
| 5739-2      | .652       | .875       | .598       | .110       | .470       | .050       | .062       | .042 |

# FORMED KEY WASHERS

Custom Sizes Available . . . See Last Page of This Section



**NOTE:** Unless stated, all catalog parts are supplied without finish. See page 545 for specifying finishes.

| PART NUMBER | SCREW SIZE | A<br>± .005 | B<br>± .010 | T    | D<br>± .005 | E<br>± .010 | F<br>± .010 | MATERIAL        |
|-------------|------------|-------------|-------------|------|-------------|-------------|-------------|-----------------|
| 5740-2      | 2          | .098        | .162        | .030 | .040        | .120        | .060        | Stainless Steel |
| 5740-4      | 4          | .128        | .187        | .030 | .040        | .120        | .060        | Stainless Steel |
| 5740-11     | 6          | .150        | .242        | .020 | .120        | .148        | .145        | Steel           |
| 5740-8      | 6          | .161        | .240        | .030 | .070        | .140        | .060        | Stainless Steel |
| 5740-12     | 8          | .177        | .260        | .030 | .090        | .160        | .060        | Stainless Steel |
| 5740-14     | 10         | .198        | .500        | .060 | .200        | .318        | .060        | Stainless Steel |
| 5740-13     | 10         | .200        | .612        | .020 | .060        | .305        | .390        | Steel           |
| 5740-16     | 10         | .208        | .320        | .030 | .090        | .180        | .060        | Stainless Steel |
| 5740-1      | 12         | .230        | .349        | .030 | .110        | .265        | .093        | Stainless Steel |
| 5740-3      |            | .252        | .380        | .020 | .062        | .224        | .024        | Stainless Steel |
| 5740-5      |            | .252        | .500        | .040 | .090        | .296        | .050        | Stainless Steel |
| 5740-20     |            | .254        | .530        | .060 | .067        | .293        | .050        | Steel           |
| 5740-6      |            | .255        | .410        | .024 | .080        | .240        | .260        | Steel           |
| 5740-7      |            | .255        | .560        | .048 | .130        | .453        | .041        | Steel           |
| 5740-24     |            | .271        | .450        | .060 | .120        | .220        | .090        | Stainless Steel |
| 5740-26     |            | .330        | .562        | .062 | .165        | .298        | .125        | Stainless Steel |
| 5740-28     |            | .395        | .640        | .060 | .200        | .340        | .125        | Stainless Steel |
| 5740-9      |            | .475        | .720        | .040 | .111        | .352        | .050        | Stainless Steel |
| 5740-10     |            | .505        | .750        | .060 | .120        | .321        | .055        | Steel           |

Solder Lugs

Spring Clips

Spring Washers

Shoulder Washers

Stand Off Spacers

Flat Round Washers - Metallic

Flat Round Washers - Non-Metallic

O-Rings

Retaining Rings

Lockwashers, Retention Washers & Push-on Nuts

Clamps & Brackets

Expansion Plugs

Ground Straps, Bus Bars & Term. Blocks

Tab & Notch Washers

Misc. Washers & Tags

Solid State Insulators

Military Standards

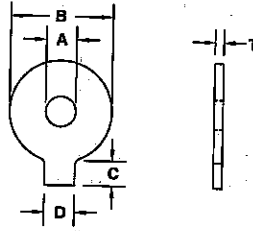
Custom Parts

Engineering Tables

Num. & Alpha. Inde of Parts

# SINGLE EXTERNAL TAB WASHERS STEEL

Custom Sizes Available . . . See Last Page of This Section

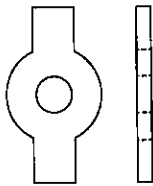


**NOTE:** Unless stated, all catalog parts are supplied without finish. See page 545 for specifying finishes.

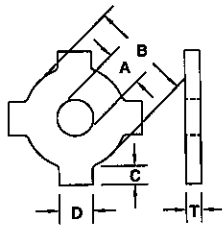
| PART NUMBER | A<br>±.005 | B<br>±.010 | C<br>±.010 | D<br>±.005 | T    |
|-------------|------------|------------|------------|------------|------|
| 5741-1      | .195       | 1.135      | .152       | .270       | .060 |
| 5741-2      | .250       | .500       | .180       | .250       | .030 |
| 5741-3      | .251       | .437       | .124       | .092       | .030 |
| 5741-4      | .251       | .613       | .166       | .182       | .060 |
| 5741-5      | .252       | .380       | .067       | .062       | .020 |
| 5741-6      | .255       | .410       | .268       | .080       | .024 |
| 5741-7      | .256       | .561       | .245       | .127       | .048 |
| 5741-9      | .325       | .635       | .055       | .128       | .060 |
| 5741-19     | .378       | .620       | .300       | .360       | .032 |
| 5741-8      | .380       | .464       | .280       | .030       | .005 |
| 5741-21     | .390       | .910       | .165       | .156       | .030 |
| 5741-10     | .400       | .625       | .282       | .183       | .060 |
| 5741-12     | .420       | .667       | .110       | .168       | .030 |
| 5741-11     | .438       | .625       | .282       | .183       | .060 |
| 5741-22     | .438       | .625       | .343       | .186       | .060 |
| 5741-16     | .469       | .719       | .072       | .110       | .036 |
| 5741-20     | .518       | .911       | .150       | .156       | .024 |
| 5741-24     | .518       | 1.250      | .153       | .156       | .024 |
| 5741-13     | .575       | .720       | .053       | .111       | .030 |
| 5741-14     | .640       | 1.000      | .074       | .188       | .060 |
| 5741-15     | .765       | 1.140      | .140       | .280       | .060 |
| 5741-26     | .865       | 1.115      | .025       | .054       | .015 |
| 5741-28     | 1.020      | 1.450      | .250       | .180       | .015 |
| 5741-17     | 1.150      | 1.500      | .062       | .125       | .060 |
| 5741-40     | 2.474      | 2.975      | .033       | .055       | .020 |
| 5741-18     | 2.724      | 2.976      | .034       | .055       | .020 |

# MULTIPLE EXTERNAL TAB WASHERS STEEL

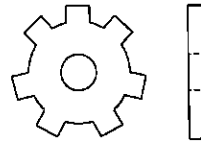
Custom Sizes Available . . . See Last Page of This Section



STYLE 1



STYLE 2 (Equally Spaced)



STYLE 3 (Not Equally Spaced)

**NOTE:** Unless stated, all catalog parts are supplied without finish. See page 545 for specifying finishes.

| PART NUMBER | STYLE | A<br>± .005 | B<br>± .010 | C<br>± .016 | D<br>± .005 | NO. OF TABS | T    |
|-------------|-------|-------------|-------------|-------------|-------------|-------------|------|
| 5742-4      | 1     | .070        | .180        | .035        | .031        | 2           | .030 |
| 5742-1      | 1     | .140        | .375        | .112        | .047        | 2           | .030 |
| 5742-2      | 1     | .170        | .375        | .112        | .047        | 2           | .030 |
| 5742-5      | 1     | .200        | .375        | .112        | .047        | 2           | .030 |
| 5742-12     | 1     | .255        | .375        | .112        | .047        | 2           | .030 |
| 5742-13     | 1     | .260        | .385        | .107        | .098        | 2           | .030 |
| 5742-17     | 1     | .328        | .690        | .156 & .238 | .187        | 2           | .030 |
| 5742-11     | 1     | .393        | .690        | .156 & .238 | .187        | 2           | .060 |
| 5742-20     | 1     | .515        | 1.145       | .080        | .151        | 2           | .048 |
| 5742-28     | 1     | .751        | 1.000       | .093 & .219 | .375        | 2           | .060 |
| 5742-18     | 1     | .830        | 1.125       | .213 & .525 | .635        | 2           | .010 |
| 5742-19     | 1     | .885        | 1.300       | .168        | .150        | 2           | .030 |
| 5742-21     | 1     | 1.020       | 1.385       | .150        | .125        | 2           | .030 |
| 5742-27     | 1     | 1.453       | 1.668       | .065        | .210        | 2           | .042 |
| 5742-29     | 1     | 1.763       | 1.980       | .065        | .210        | 2           | .042 |
| 5742-30     | 1     | 2.013       | 2.230       | .165        | .210        | 2           | .042 |
| 5742-22     | 1     | 2.030       | 2.247       | .077        | .124        | 2           | .015 |
| 5742-24     | 2     | .126        | .338        | .108        | .055        | 4           | .015 |
| 5742-8      | 2     | .135        | .185        | .032        | .050        | 4           | .010 |
| 5742-6      | 2     | .167        | .340        | .110        | .070        | 4           | .024 |
| 5742-10     | 2     | .190        | .440        | .280        | .125        | 8           | .030 |
| 5742-3      | 2     | .192        | .344        | .140        | .092        | 5           | .036 |
| 5742-16     | 2     | .320        | .528        | .109        | .086        | 12          | .060 |
| 5742-7      | 2     | .359        | .440        | .061        | .050        | 8           | .010 |
| 5742-9      | 2     | .385        | .468        | .078        | .093        | 8           | .030 |
| 5742-15     | 2     | .515        | .592        | .094        | .093        | 8           | .010 |
| 5742-26     | 2     | .520        | 1.170       | .415        | .400        | 8           | .010 |
| 5742-25     | 2     | .636        | 1.000       | .187        | .250        | 8           | .048 |
| 5742-23     | 2     | 3.100       | 4.050       | .140        | .150        | 23          | .024 |
| 5742-14     | 3     | .445        | .620        | .125        | .175        | 7           | .030 |

Solder Lugs

Spring Clips

Spring Washers

Shoulder Washers

Stand Off Spacers

Flat Round Washers - Metallic

Flat Round Washers - Non-Metallic

O-Rings

Retaining Rings

Lockwashers, Retention Washers & Push-on Nuts

Clamps & Brackets

Expansion Plugs

Ground Straps, Bus Bars & Term. Blocks

Tab & Notch Washers

Misc. Washers & Tags

Solid State Insulators

Military Standards

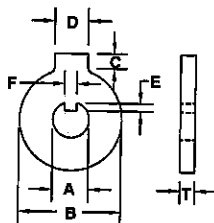
Custom Parts

Engineering Tables

Num. & Alpha. Index of Parts

# SINGLE INTERNAL – SINGLE EXTERNAL TAB WASHERS STEEL

Custom Sizes Available . . . See Last Page of This Section

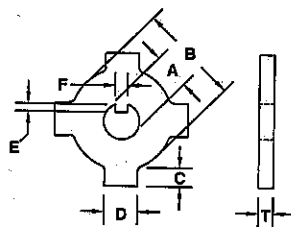


**NOTE:** Unless stated, all catalog parts are supplied without finish. See page 545 for specifying finishes.

| PART NUMBER | A ± .005 | B ± .010 | C ± .010 | D ± .005 | E ± .010 | F ± .005 | T    |
|-------------|----------|----------|----------|----------|----------|----------|------|
| 5744-1      | .190     | .437     | .124     | .092     | .023     | .058     | .018 |
| 5744-4      | .257     | .340     | .075     | .062     | .027     | .042     | .030 |
| 5744-2      | .312     | .635     | .055     | .128     | .054     | .080     | .020 |
| 5744-12     | .378     | .520     | .132     | .110     | .027     | .057     | .030 |
| 5744-3      | .448     | .720     | .053     | .111     | .068     | .115     | .030 |
| 5744-8      | .469     | .719     | .092     | .110     | .030     | .063     | .030 |
| 5744-10     | .475     | .719     | .431     | .280     | .034     | .062     | .042 |
| 5744-5      | .476     | .690     | .055     | .090     | .030     | .062     | .030 |
| 5744-6      | .571     | .911     | .150     | .156     | .062     | .082     | .030 |
| 5744-7      | .949     | 1.450    | .250     | .180     | .082     | .250     | .093 |
| 5744-9      | 1.000    | 1.500    | .062     | .125     | .110     | .235     | .030 |
| 5744-24     | 1.261    | 2.975    | .033     | .055     | .100     | .113     | .030 |
| 5744-11     | 1.317    | 2.976    | .034     | .055     | .048     | .078     | .060 |

# MULTIPLE EXTERNAL – INTERNAL TAB WASHER STEEL

Custom Sizes Available . . . See Last Page of This Section



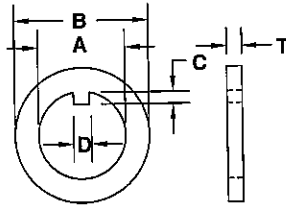
Check with factory for actual tab configuration.

| PART NUMBER | A ± .005 | B ± .010 | C ± .010    | D ± .005 | E ± .010 | F ± .005 | NO. INT. TABS | NO. EXT. TABS | T    |
|-------------|----------|----------|-------------|----------|----------|----------|---------------|---------------|------|
| 5743-4      | .190     | .423     | .200        | .187     | .023     | .058     | 1             | 4             | .030 |
| 5743-1      | .256     | .437     | .093        | .094     | .049     | .059     | 2             | 7             | .020 |
| 5743-8      | .256     | .622     | .093        | .094     | .049     | .059     | 2             | 7             | .020 |
| 5743-11     | .318     | .438     | .142        | .118     | .032     | .050     | 1             | 7             | .030 |
| 5743-13     | .395     | .700     | .302        | .253     | .065     | .065     | 1             | 4             | .030 |
| 5743-2      | .448     | .620     | .125        | .175     | .057     | .110     | 1             | 7             | .030 |
| 5743-12     | .475     | 1.145    | .080        | .151     | .040     | .063     | 1             | 2             | .048 |
| 5743-3      | .562     | .875     | .163        | .187     | .071     | .125     | 2             | 1             | .048 |
| 5743-5      | .571     | 1.000    | .093 & .219 | .375     | .062     | .082     | 1             | 2             | .030 |
| 5743-6      | .632     | .893     | .257        | .231     | .080     | .148     | 1             | 7             | .048 |
| 5743-7      | .638     | 1.000    | .187        | .250     | .045     | .156     | 1             | 8             | .047 |
| 5743-9      | .755     | 1.125    | .238        | .250     | .060     | .187     | 2             | 1             | .048 |
| 5743-20     | 1.521    | 2.110    | .253        | .185     | .175     | .174     | 1             | 5             | .048 |
| 5743-10     | 3.730    | 4.050    | .140        | .150     | .200     | .215     | 2             | 23            | .020 |



# SINGLE INTERNAL TAB WASHERS STEEL

Custom Sizes Available . . . See Last Page of This Section

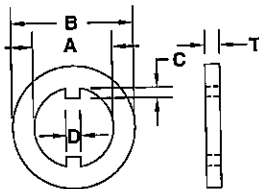


**NOTE:** Unless stated, all catalog parts are supplied without finish. See page 545 for specifying finishes.

| PART NUMBER | A ± .005 | B ± .010 | C ± .010 | D ± .005 | T    |
|-------------|----------|----------|----------|----------|------|
| 5746-8      | .189     | .360     | .023     | .058     | .024 |
| 5746-1      | .319     | .510     | .054     | .080     | .030 |
| 5746-11     | .323     | .690     | .125     | .054     | .024 |
| 5746-12     | .437     | .625     | .030     | .063     | .030 |
| 5746-13     | .444     | .626     | .032     | .093     | .030 |
| 5746-2      | .448     | .688     | .068     | .115     | .030 |
| 5746-14     | .503     | .810     | .045     | .085     | .030 |
| 5746-15     | .530     | .812     | .140     | .094     | .060 |
| 5746-3      | .571     | .800     | .062     | .082     | .030 |
| 5746-16     | .630     | 1.000    | .104     | .184     | .060 |
| 5746-17     | .752     | 1.248    | .080     | .090     | .030 |
| 5746-18     | .807     | 1.125    | .250     | .312     | .020 |
| 5746-4      | .906     | 1.156    | .128     | .187     | .060 |
| 5746-5      | 1.003    | 1.250    | .052     | .105     | .048 |
| 5746-24     | 1.005    | 1.937    | .110     | .235     | .030 |
| 5746-19     | 1.012    | 2.060    | .110     | .235     | .042 |
| 5746-6      | 1.016    | 2.006    | .125     | .281     | .060 |
| 5746-30     | 1.266    | 1.750    | .100     | .113     | .060 |
| 5746-7      | 1.317    | 1.600    | .048     | .078     | .060 |
| 5746-9      | 1.950    | 2.300    | .125     | .219     | .060 |
| 5746-10     | 2.812    | 3.125    | .093     | .218     | .030 |
| 5746-40     | 3.750    | 4.625    | .500     | .250     | .060 |

# DOUBLE INTERNAL TAB WASHER STEEL

Custom Sizes Available . . . See Last Page of This Section

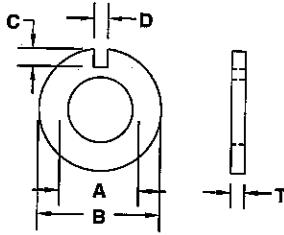


| PART NUMBER | A ± .005 | B ± .010 | C ± .016 | D ± .005 | T    |
|-------------|----------|----------|----------|----------|------|
| 5747-11     | .252     | .350     | .032     | .047     | .024 |
| 5747-1      | .437     | .650     | .187     | .062     | .060 |
| 5747-12     | .445     | 1.000    | .053     | .083     | .060 |
| 5747-2      | .530     | .688     | .057     | .055     | .048 |
| 5747-19     | .631     | .812     | .180     | .089     | .042 |
| 5747-20     | .745     | 1.000    | .125     | .110     | .030 |
| 5747-3      | .906     | 1.765    | .125     | .187     | .060 |
| 5747-5      | 1.032    | 1.500    | .107     | .136     | .030 |
| 5747-4      | 3.730    | 4.125    | .150     | .210     | .060 |

- Solder Lugs
- Spring Clips
- Spring Washers
- Shoulder Washers
- Stand Off Spacers
- Flat Round Washers - Metallic
- Flat Round Washers - Non-Metallic
- O-Rings
- Retaining Rings
- Lockwashers, Retention Washers & Push-on Nuts
- Clamps & Brackets
- Expansion Plugs
- Ground Straps, Bus Bars & Term. Blocks
- Tab & Notch Washers
- Misc. Washers & Tags
- Solid State Insulators
- Military Standards
- Custom Parts
- Engineering Tables
- Num. & Alpha. Index of Parts

# SINGLE EXTERNAL NOTCH WASHERS STEEL

Custom Sizes Available . . . See Last Page of This Section

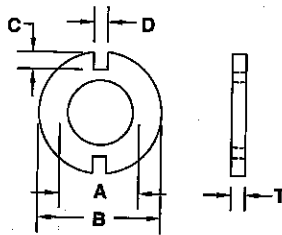


**NOTE:** Unless stated, all catalog parts are supplied without finish. See page 545 for specifying finishes.

| PART NUMBER | A ± .005 | B ± .010 | C ± .010 | D ± .005 | T    |
|-------------|----------|----------|----------|----------|------|
| 5753-1      | .067     | .171     | .039     | .032     | .030 |
| 5753-4      | .095     | .190     | .023     | .058     | .018 |
| 5753-2      | .100     | .312     | .054     | .080     | .020 |
| 5753-5      | .130     | .807     | .250     | .312     | .020 |
| 5753-3      | .140     | .807     | .247     | .312     | .024 |
| 5753-7      | .156     | .448     | .068     | .115     | .030 |
| 5753-6      | .187     | .475     | .040     | .063     | .042 |
| 5753-8      | .255     | .470     | .030     | .063     | .030 |
| 5753-9      | .265     | .571     | .062     | .082     | .030 |
| 5753-11     | .344     | .578     | .078     | .094     | .010 |
| 5753-10     | .375     | 1.266    | .100     | .113     | .060 |
| 5753-13     | .400     | .906     | .128     | .187     | .060 |
| 5753-12     | .457     | .975     | .129     | .187     | .060 |
| 5753-16     | .505     | 1.000    | .110     | .235     | .030 |
| 5753-20     | .625     | 1.093    | .090     | .180     | .010 |
| 5753-14     | .640     | 1.266    | .100     | .113     | .060 |
| 5753-15     | .765     | 1.266    | .100     | .113     | .060 |
| 5753-17     | .890     | 1.317    | .048     | .078     | .060 |
| 5753-18     | 1.020    | 1.317    | .048     | .078     | .060 |
| 5753-19     | 1.520    | 2.812    | .094     | .218     | .030 |

# DOUBLE EXTERNAL NOTCH WASHERS STEEL

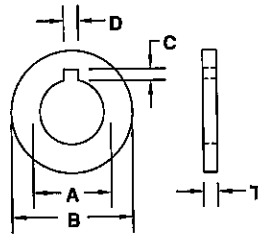
Custom Sizes Available . . . See Last Page of This Section



| PART NUMBER | A ± .005 | B ± .010 | C ± .010 | D ± .005 | T    |
|-------------|----------|----------|----------|----------|------|
| 5754-1      | .066     | .290     | .067     | .064     | .024 |
| 5754-4      | .180     | .560     | .124     | .160     | .060 |
| 5754-8      | .255     | .747     | .125     | .110     | .030 |
| 5754-9      | .260     | .800     | .160     | .225     | .030 |
| 5754-16     | .875     | 1.530    | .205     | .075     | .060 |
| 5754-15     | .990     | 1.950    | .070     | .140     | .042 |

# SINGLE INTERNAL NOTCH WASHERS STEEL

Custom Sizes Available . . . See Last Page of This Section

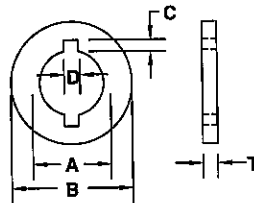


**NOTE:** Unless stated, all catalog parts are supplied without finish. See page 545 for specifying finishes.

| PART NUMBER | A ± .005 | B ± .010 | C ± .016 | D ± .005 | T    |
|-------------|----------|----------|----------|----------|------|
| 5750-4      | .265     | .625     | .110     | .093     | .010 |
| 5750-1      | .635     | 1.000    | .055     | .128     | .060 |
| 5750-12     | .667     | 1.125    | .168     | .110     | .030 |
| 5750-16     | .720     | 1.125    | .092     | .110     | .030 |
| 5750-20     | .911     | 1.437    | .150     | .156     | .024 |
| 5750-2      | 1.140    | 1.880    | .140     | .280     | .060 |
| 5750-24     | 1.250    | 1.750    | .153     | .156     | .024 |
| 5750-28     | 1.448    | 2.250    | .250     | .180     | .015 |
| 5750-29     | 1.460    | 1.675    | .020     | .070     | .030 |
| 5750-3      | 1.500    | 2.000    | .062     | .125     | .060 |
| 5750-32     | 1.762    | 2.376    | .125     | .222     | .015 |

# DOUBLE INTERNAL NOTCH WASHERS STEEL

Custom Sizes Available . . . See Last Page of This Section



| PART NUMBER | A ± .005 | B ± .010 | C ± .010 | D ± .005 | T    |
|-------------|----------|----------|----------|----------|------|
| 5751-4      | .180     | .375     | .035     | .031     | .030 |
| 5751-8      | .310     | .812     | .146     | .095     | .060 |
| 5751-12     | .375     | 1.425    | .112     | .048     | .060 |
| 5751-14     | .385     | .625     | .107     | .098     | .030 |
| 5751-24     | 1.145    | 1.375    | .080     | .151     | .048 |
| 5751-1      | 1.300    | 1.875    | .178     | .150     | .048 |
| 5751-2      | 1.300    | 2.000    | .225     | .150     | .060 |
| 5751-3      | 1.385    | 1.990    | .125     | .147     | .060 |

Solder Lugs

Spring Clips

Spring Washers

Shoulder Washers

Stand Off Spacers

Flat Round Washers - Metallic

Flat Round Washers - Non-Metallic

O-Rings

Retaining Rings

Lockwashers, Retention Washers & Push-on Nuts

Clamps & Brackets

Expansion Plugs

Ground Straps, Bus Bars & Term. Blocks

Tab & Notch Washers

Misc. Washers & Tags

Solid State Insulators

Military Standards

Custom Parts

Engineering Tables

Num. & Alpha. Index of Parts

## HOW TO REQUEST A FAX QUOTE:

### CUSTOM TAB OR NOTCH WASHERS

**If your application requires a custom tab or notch washer with dimensions not listed in this catalog, simply photocopy the adjoining page, fill in all necessary dimensions, and fax it to us at 208-734-7222. It's that simple!**

Seastrom Manufacturing can manufacture virtually any custom tab or notch washer you require.

Locate the part number configuration to best suit your application. (See the illustrated table of contents in the front of this section.) Fill in the configuration part number on the photocopy of the Fax Quote page, as well as all necessary dimensions.\*

#### EXAMPLE

|  |                |                                  |
|--|----------------|----------------------------------|
| TAB OR NOTCH WASHER CONFIGURATION: <u>5750</u> |                |                                  |
| A: <u>.265</u>                                 | E: _____       | No. of Tabs<br>(Internal): _____ |
| B: <u>.625</u>                                 | F: _____       |                                  |
| C: <u>.110</u>                                 | G: _____       | No. of Tabs<br>(External): _____ |
| D: <u>.093</u>                                 | T: <u>.010</u> |                                  |

\*If the configuration you require does not match the configuration in the front of this section, please refer to the Custom Parts section for a fax quote cover sheet and a blank print to sketch your own design.

If we can answer any questions concerning your custom tab and/or notch washer needs, please feel free to call us today at 1-800-634-2356.

# FAX QUOTE

## CUSTOM TAB OR NOTCH WASHERS

**PLEASE FAX TO:**

**SEASTROM MANUFACTURING COMPANY, INC. 208•734•7222**  
**ATTENTION: Inside Sales**

DATE \_\_\_\_\_

|   |          |                                  |
|---|----------|----------------------------------|
| <b>TAB OR NOTCH WASHER CONFIGURATION:</b> _____ |          |                                  |
| A: _____  | E: _____ | No. of Tabs<br>(Internal): _____ |
| B: _____  | F: _____ |                                  |
| C: _____  | G: _____ | No. of Tabs<br>(External): _____ |
| D: _____  | T: _____ |                                  |

UNLESS OTHERWISE SPECIFIED ALL DIMENSIONS WILL BE TO CATALOG TOLERANCES.\*

Material: \_\_\_\_\_ Deburring Required?  Yes  No

Plating: \_\_\_\_\_

Other Requirements: \_\_\_\_\_

From: \_\_\_\_\_ Title: \_\_\_\_\_

Company: \_\_\_\_\_

Address: \_\_\_\_\_ City: \_\_\_\_\_ State: \_\_\_\_\_ Zip: \_\_\_\_\_

Phone: \_\_\_\_\_ Fax: \_\_\_\_\_

**\*See Pages 551  
and 552 for  
commercial  
thickness,  
tolerances.**

|                                |                         |                 |
|--------------------------------|-------------------------|-----------------|
| Please Quote the following:    | <i>For Seastrom Use</i> |                 |
| <b>QUANTITY</b>                | <b>PRICE</b>            | <b>DELIVERY</b> |
|                                |                         |                 |
|                                |                         |                 |
|                                |                         |                 |
|                                |                         |                 |
|                                |                         |                 |
| <b>Estimated Yearly Usage:</b> |                         |                 |

- Solder Lugs
- Spring Clips
- Spring Washers
- Shoulder Washers
- Stand Off Spacers
- Flat Round Washers – Metallic
- Flat Round Washers – Non-Metallic
- O-Rings
- Retaining Rings
- Lockwashers, Retention Washers & Push-on Nuts
- Clamps & Brackets
- Expansion Plugs
- Ground Straps, Bus Bars & Term. Blocks
- Tab & Notch Washers
- Misc. Washers & Tags
- Solid State Insulators
- Military Standards
- Custom Parts
- Engineering Tables
- Num. & Alpha. Index of Parts

DO NOT TEAR OUT ... PLEASE PHOTOCOPY