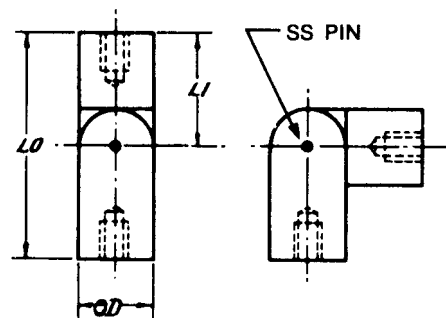


HINGED STANDOFFS FEMALE - FEMALE 3/16" & 1/4"

HINGED STANDOFFS

CHART A STANDARD INTERNAL THREAD	
THREAD	DEPTH
2-56	3/16
4-40	1/4
6-32	3/8
8-32	7/16
10-32	1/2

CHART B INTERNAL THREAD		
PART NO.	THREAD	DEPTH MIN
17300	4-40	.152
17301	4-40	.214
17315	4-40	.121
17315	6-32	.099
17315	8-32	.090
17316	4-40	.183
17316	6-32,8-32	.152
17317	6-32,8-32	.215
17318	6-32,8-32	.280
17319	6-32,8-32	.340



Tolerance on LO $\pm 1/64$

Typical Applications:
Allow circuit boards to fold up providing access for testing and servicing without disconnecting wires or components.

Special Sizes and Finishes Available.

3/16 O.D. Female - Female		
LO	Part No.	Chart Reference Depth of Female Thread (Dim. B)
3/4	17300	Chart A 2-56; Chart B 4-40
7/8	17301	Chart A
1"	17302	Chart A
1-1/8	17303	Chart A
1-1/4	17304	Chart A
1-3/8	17305	Chart A
1-1/2	17306	Chart A
1-5/8	17307	Chart A
1-3/4	17308	Chart A
1-7/8	17309	Chart A
2"	17310	Chart A

1/4 O.D. Female - Female		
LO	Part No.	Chart Reference Depth of Female Thread (Dim. B)
3/4	17315	Chart B
7/8	17316	Chart B
1"	17317	Chart A 4-40; Chart B All Others
1-1/8	17318	Chart A 4-40; Chart B All Others
1-1/4	17319	Chart A 4-40; Chart B All Others
1-3/8	17320	Chart A
1-1/2	17321	Chart A
1-5/8	17322	Chart A
1-3/4	17323	Chart A
1-7/8	17324	Chart A
2"	17325	Chart A

Stock Materials And Finishes:
 • Brass-Zinc Plate (-28 code)
 • Aluminum-Plain (-0 code)
 • Stainless Steel-Passivated (-7 code)
 Refer To Page 8 For Other Finish Codes.

PART NUMBER ORDERING SYSTEM			
XXXXX - X - XXXX - XX			
PART NO.	THREAD	MATERIAL	FINISH

THREAD CODE	
THREAD	CODE
2-56	0256
4-40	0440
6-32	0632
8-32	0832
3/16" OD 2-56, 4-40 1/4" OD 4-40, 6-32, 8-32	

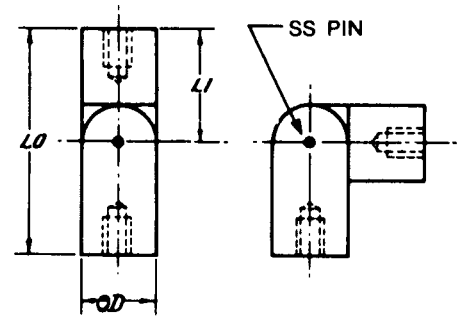
MATERIAL	CODE
Aluminum	A
Brass	B
Steel	S
Stainless Steel	SS

5 Pasco Hill Road • Cromwell, CT 06416-1093
 Phone: 860-828-0847 • Call Toll Free: 800-243-6032 • Fax: 860-828-0381
 Web Address: <http://www.amatom.com> • E-Mail: sales@amatom.com

HINGED STANDOFFS FEMALE - FEMALE 5/16" & 3/8"

CHART A STANDARD INTERNAL THREAD	
THREAD	DEPTH
2-56	3/16
4-40	1/4
6-32	3/8
8-32	7/16
10-32	1/2

CHART B INTERNAL THREAD		
PART NO.	THREAD	DEPTH MIN
17330	6,8,10-32	.122
17331	6,8,10-32	.117
17332	6,8,10-32	.178
17333	6,8,10-32	.242
17334	6,8,10-32	.302
17335	8,10-32	.367
17336	10-32	.432
17346	6,8,10-32	.084
17347	6,8,10-32	.149
17348	6,8,10-32	.209
17349	6,8,10-32	.274
17350	8,10-32	.334
17351	8,10-32	.399
17352	10-32	.459



Tolerance on LO $\pm 1/64$

Typical Applications:

Allow circuit boards to fold up providing access for testing and servicing without disconnecting wires or components.

Special Sizes and Finishes Available.

5/16 O.D. Female - Female		
LO	Part No.	Chart Reference Depth of Female Thread (Dim. B)
3/4	17330	Chart B
7/8	17331	Chart B
1"	17332	Chart B
1-1/8	17333	Chart B
1-1/4	17334	Chart B
1-3/8	17335	Chart B
1-1/2	17336	Chart B
1-5/8	17337	Chart A
1-3/4	17338	Chart A
1-7/8	17339	Chart A
2"	17340	Chart A

3/8 O.D. Female - Female		
LO	Part No.	Chart Reference Depth of Female Thread (Dim. B)
3/4	17345	Chart B
7/8	17346	Chart B
1"	17347	Chart B
1-1/8	17348	Chart B
1-1/4	17349	Chart B
1-3/8	17350	Chart B
1-1/2	17351	Chart B
1-5/8	17352	Chart A
1-3/4	17353	Chart A
1-7/8	17354	Chart A
2"	17355	Chart A

Stock Materials And Finishes:

- Brass-Zinc Plate (-28 code)
- Aluminum-Plain (-0 code)
- Stainless Steel-Passivated (-7 code)

Refer To Page 8 For Other Finish Codes.

PART NUMBER ORDERING SYSTEM			
XXXXX - X - XXXX - XX			
PART NO.	THREAD	MATERIAL	FINISH

THREAD CODE	
THREAD	CODE
6-32	0632
8-32	0832
10-32	1032

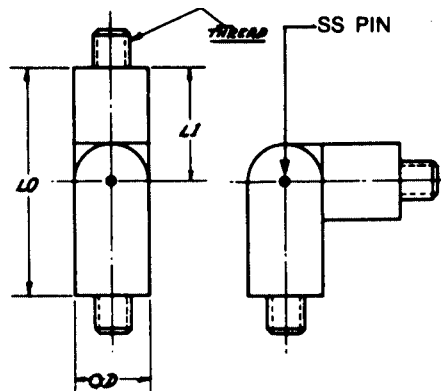
5/16" OD 6-32, 8-32, 10-32
3/8" OD 6-32, 8-32, 10-32

MATERIAL	CODE
Aluminum	A
Brass	B
Steel	S
Stainless Steel	SS

5 Pasco Hill Road • Cromwell, CT 06416-1093
 Phone: 860-828-0847 • Call Toll Free: 800-243-6032 • Fax: 860-828-0381
 Web Address: <http://www.amatom.com> • E-Mail: sales@amatom.com

HINGED STANDOFFS MALE - MALE 3/16", 1/4", 5/16" & 3/8"

EXTERNAL THREAD	
THREAD	DEPTH
2-56	5/32
4-40	3/16
6-32	1/4
8-32	3/8
10-32	3/8



Typical Applications:

Allow circuit boards to fold up providing access for testing and servicing without disconnecting wires or components.

Special Sizes and Finishes Available.

TOLERANCE ON LD $\pm 1/64$

LO	MALE - MALE			
	Part No.			
	3/16 OD	1/4 OD	5/16 OD	3/8 OD
1/2	17360	17375	17390	17405
5/8	17361	17376	17391	17406
3/4	17362	17377	17392	17407
7/8	17363	17378	17393	17408
1"	17364	17379	17394	17409
1-1/8	17365	17380	17395	17410
1-1/4	17366	17381	17396	17411
1-3/8	17367	17382	17397	17412
1-1/2	17368	17383	17398	17413
1-5/8	17369	17384	17399	17414
1-3/4	17370	17385	17400	17415
1-7/8	17371	17386	17401	17416
2"	17372	17387	17402	17417

PART NUMBER ORDERING SYSTEM			
XXXXX	- X -	XXXX	- XX
PART NO.		THREAD	
		MATERIAL	FINISH

THREAD CODE	
THREAD	CODE
2-56	0256
4-40	0440
6-32	0632
8-32	0832
10-32	1032

3/16 Thread: 2-56, 4-40
1/4 Thread: 4-40, 6-32, 8-32
5/16 Thread: 6-32, 8-32, 10-32
3/8 Thread: 6-32, 8-32, 10-32

Stock Materials And Finishes:

- Brass-Zinc Plate (-28 code)
- Aluminum-Plain (-0 code)
- Stainless Steel-Passivated (-7 code)

Refer To Page 8 For Other Finish Codes.

MATERIAL	CODE
Aluminum	A
Brass	B
Steel	S
Stainless Steel	SS

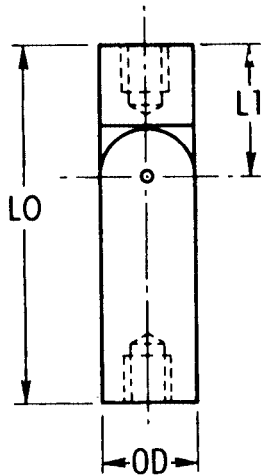
5 Pasco Hill Road • Cromwell, CT 06416-1093
 Phone: 860-828-0847 • Call Toll Free: 800-243-6032 • Fax: 860-828-0381
 Web Address: <http://www.amatom.com> • E-Mail: sales@amatom.com

HINGED STANDOFFS

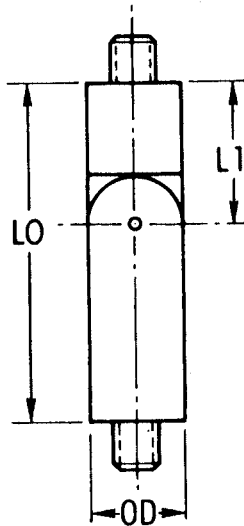
The Following Have Been Made On Special Order
When One Leg Is Longer Than The Other.

SPECIFY ALL DIMENSIONS
REQUIRED

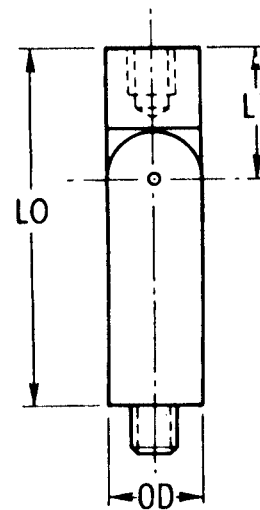
DIAMETER — O.D.
LENGTH OVERALL — L.O. $\pm 1/64$
LENGTH TO PIVOT — L1



FEMALE - FEMALE
TYPE 1

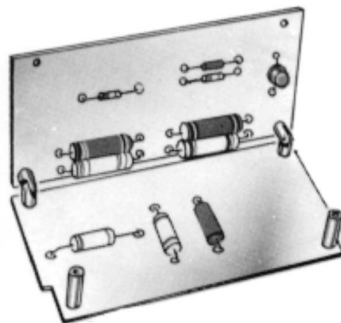


MALE - MALE
TYPE 2



FEMALE - MALE
TYPE 3

- Send Print For Special Size Quotes.
- Any Finish From Page 8 Is Available.
- Contact Sales Office For Any Questions.



5 Pasco Hill Road • Cromwell, CT 06416-1093
Phone: 860-828-0847 • Call Toll Free: 800-243-6032 • Fax: 860-828-0381
Web Address: <http://www.amatom.com> • E-Mail: sales@amatom.com