

RULAND

Celebrating over 60 Years of Excellence



Carefully Made
CLAMPING DEVICES

INTRODUCTION AND WARRANTY



Ruland Manufacturing Co., Inc. has been supplying carefully made products since 1937. We have manufactured everything from bicycle pumps to high pressure valves, including the valve that pressurized the space suit of the first American to walk in space. In recent years, all of our expertise has been devoted to making the best performing shaft collars and couplings available. We are pleased to now add Hublok™ clamping devices to our product line.

Ruland Hublok™ clamping devices are an ideal way to attach components such as gears, sprockets and pulleys to shafts when high amounts of torque will be transmitted and a keyway is not desired. Hublok™ clamping devices are made of components supplied to Ruland by overseas manufacturers that meet our rigorous standards for product quality. We then add our own black oxide finish and the same high performing socket headed cap screws that we use in our collars and couplings. The result is a superior product with smooth torquing, surface protection, excellent holding power, a fine appearance and zero backlash operation that we are proud to sell under the Ruland name.



Ruland Manufacturing Co., Inc.

6 Hayes Memorial Drive
Marlborough, MA 01752

508-485-1000 • fax 508-485-9000

800-225-4234 • fax 800-929-9205

www.ruland.com • sales@ruland.com

WARRANTY/DISCLAIMER OF UNSTATED WARRANTIES/LIMITATION OF LIABILITY

Warranty. Ruland warrants that the products sold hereunder meet Ruland's size and materials specifications as set forth in this catalog. Products not meeting Ruland's size and material specifications will, at Ruland's option, be replaced or the purchase price refunded.

Disclaimer of unstated warranties. THE WARRANTY PRINTED ABOVE IS THE ONLY WARRANTY APPLICABLE TO THESE PRODUCTS. ALL OTHER WARRANTIES, EXPRESS OR IMPLIED, INCLUDING BUT NOT LIMITED TO THE IMPLIED WARRANTIES OF MERCHANTABILITY AND FITNESS FOR A PARTICULAR PURPOSE ARE DISCLAIMED. It is the responsibility of the user to determine the suitability of Ruland products for a specific application. No person, including employees of Ruland or agents in the company's channels of distribution is authorized to represent on Ruland's behalf, the suitability of Ruland's products for a specific purpose.

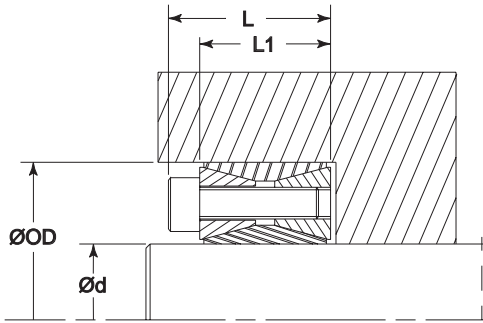
Limitation of Liability. IT IS UNDERSTOOD AND AGREED THAT SELLER'S LIABILITY SHALL NOT EXCEED THE AMOUNT OF THE PURCHASE PRICE. SELLER SHALL NOT BE LIABLE FOR SPECIAL, INDIRECT OR CONSEQUENTIAL DAMAGES. THE PRICE STATED FOR THE PRODUCT IS A CONSIDERATION IN LIMITING RULAND'S LIABILITY.



RULAND HUBLOK™ DUAL TAPER STYLE CLAMPING DEVICE

INCH DIMENSION SERIES

CDA



CLAMPING DEVICES

PART NO.	d in	SHAFT TOLERANCE in	OD in	HUB TOLERANCE in	L1 in	L in	TORQUE	AXIAL	PRESSURE		CAP SCREW SIZE	SEATING TORQUE in-lb
							RATING ft-lb	LOAD lb	SHAFT psi	HUB psi		
CDA-12-F	0.750	+0.000/-0.0020	1.850	+0.0020/-0.0000	.787	1.083	202	6525	32010	13520	M6	132
CDA-16-F	1.000	+0.000/-0.0020	1.969	+0.0020/-0.0000	.787	1.083	258	6295	28450	12618	M6	132
CDA-18-F	1.125	+0.000/-0.0025	2.165	+0.0025/-0.0000	.787	1.083	361	8100	28450	14230	M6	132
CDA-19-F	1.188	+0.000/-0.0025	2.159	+0.0025/-0.0000	.787	1.083	383	8100	26320	14230	M6	132
CDA-20-F	1.250	+0.000/-0.0025	2.362	+0.0025/-0.0000	.787	1.083	492	9450	29170	15650	M6	132
CDA-22-F	1.375	+0.000/-0.0025	2.365	+0.0025/-0.0000	.787	1.083	538	9442	27030	15954	M6	132
CDA-23-F	1.438	+0.000/-0.0025	2.559	+0.0025/-0.0000	.787	1.083	672	11025	28450	16360	M6	132
CDA-24-F	1.500	+0.000/-0.0025	2.559	+0.0025/-0.0000	.787	1.083	709	11025	27030	16360	M6	132
CDA-26-F	1.625	+0.000/-0.0025	2.953	+0.0025/-0.0000	.945	1.319	1143	16875	33430	18500	M8	324
CDA-28-F	1.750	+0.000/-0.0025	2.953	+0.0025/-0.0000	.945	1.319	1230	17100	31300	18500	M8	324
CDA-30-F	1.875	+0.000/-0.0025	3.150	+0.0025/-0.0000	.945	1.319	1295	16650	29880	17070	M8	324
CDA-31-F	1.938	+0.000/-0.0025	3.150	+0.0025/-0.0000	.945	1.319	1353	16875	28450	17070	M8	324
CDA-32-F	2.000	+0.000/-0.0025	3.346	+0.0025/-0.0000	.945	1.319	1597	16875	32300	19210	M8	324
CDA-34-F	2.125	+0.000/-0.0030	3.346	+0.0030/-0.0000	.945	1.319	1729	19800	29880	19210	M8	324
CDA-35-F	2.188	+0.000/-0.0030	3.543	+0.0030/-0.0000	.945	1.319	1748	19800	29170	17790	M8	324
CDA-36-F	2.250	+0.000/-0.0030	3.543	+0.0030/-0.0000	.945	1.319	1798	19800	28450	17790	M8	324
CDA-38-F	2.375	+0.000/-0.0030	3.531	+0.0030/-0.0000	.945	1.319	1888	19800	27030	17790	M8	324
CDA-39-F	2.438	+0.000/-0.0030	3.740	+0.0030/-0.0000	.945	1.319	2212	19800	29880	19210	M8	324
CDA-40-F	2.500	+0.000/-0.0030	3.740	+0.0030/-0.0000	.945	1.319	2269	19800	29170	19210	M8	324
CDA-42-F	2.625	+0.000/-0.0030	4.331	+0.0030/-0.0000	1.102	1.555	3169	22050	31300	18500	M10	612
CDA-44-F	2.750	+0.000/-0.0030	4.337	+0.0030/-0.0000	1.102	1.555	3328	29700	29880	18500	M10	612
CDA-46-F	2.875	+0.000/-0.0030	4.528	+0.0030/-0.0000	1.102	1.555	3451	29700	28450	17790	M10	612
CDA-47-F	2.938	+0.000/-0.0030	4.528	+0.0030/-0.0000	1.102	1.555	3545	29475	27740	17790	M10	612
CDA-48-F	3.000	+0.000/-0.0030	4.724	+0.0030/-0.0000	1.102	1.555	3581	29475	27030	17070	M10	612
CDA-50-F	3.125	+0.000/-0.0030	4.724	+0.0030/-0.0000	1.102	1.555	3762	29475	25610	17070	M10	612
CDA-52-F	3.250	+0.000/-0.0035	4.921	+0.0035/-0.0000	1.102	1.555	4421	29475	29170	18500	M10	612
CDA-54-F	3.375	+0.000/-0.0035	4.921	+0.0035/-0.0000	1.102	1.555	4558	33300	27740	18500	M10	612
CDA-55-F	3.438	+0.000/-0.0035	5.118	+0.0035/-0.0000	1.102	1.555	4630	33300	26320	17790	M10	612
CDA-56-F	3.500	+0.000/-0.0035	5.118	+0.0035/-0.0000	1.102	1.555	4775	33075	25610	17790	M10	612
CDA-60-F	3.750	+0.000/-0.0035	5.305	+0.0035/-0.0000	1.102	1.555	5716	37575	27740	19210	M10	612
CDA-63-F	3.938	+0.000/-0.0035	5.709	+0.0035/-0.0000	1.299	1.850	7054	43875	27740	19210	M12	1104
CDA-64-F	4.000	+0.000/-0.0035	5.843	+0.0035/-0.0000	1.299	1.850	7112	43875	27740	18500	M12	1104

For warranty/disclaimer information see pg. 2

- Not self-centering.
- Easy assembly/disassembly.
- High torque capacity.
- Black oxide finish for smooth torquing, holding power and surface protection.
- Accommodates large shaft and hub tolerances.

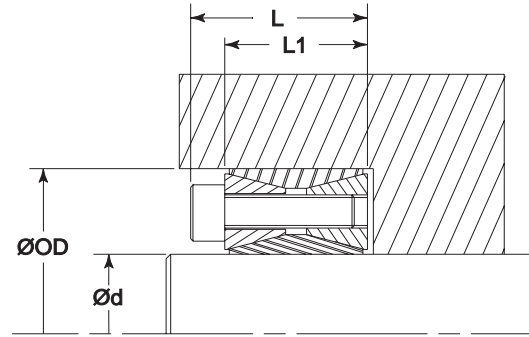
Note 1 Hardware is alloy steel with black oxide finish.

Note 2 For engineering information and installation/removal instructions see pg. 7.

Note 3 Performance ratings are for guidance only. The user must determine suitability for a particular application.



RULAND MANUFACTURING CO., INC.
 800-225-4234 fax 800-929-9205
 www.ruland.com



PART NO.	d mm	SHAFT TOLERANCE mm	OD mm	HUB TOLERANCE mm	L1 mm	L mm	TORQUE RATING Nm	AXIAL LOAD kN	PRESSURE		CAP SCREW	
									SHAFT N/mm ²	HUB N/mm ²	SIZE	SEATING TORQUE Nm
MCDA-20-F	20	+0.0/-0.05	47	+0.05/-0.00	20	27.5	280	29	225	95	M6	15
MCDA-22-F	22	+0.0/-0.05	47	+0.05/-0.00	20	27.5	310	29	210	95	M6	15
MCDA-24-F	24	+0.0/-0.05	50	+0.05/-0.00	20	27.5	330	28	210	87	M6	15
MCDA-25-F	25	+0.0/-0.05	50	+0.05/-0.00	20	27.5	350	28	200	87	M6	15
MCDA-28-F	28	+0.0/-0.06	55	+0.06/-0.00	20	27.5	500	36	200	100	M6	15
MCDA-30-F	30	+0.0/-0.06	55	+0.06/-0.00	20	27.5	530	36	185	100	M6	15
MCDA-32-F	32	+0.0/-0.06	60	+0.06/-0.00	20	27.5	670	42	205	110	M6	15
MCDA-35-F	35	+0.0/-0.06	60	+0.06/-0.00	20	27.5	730	42	190	110	M6	15
MCDA-38-F	38	+0.0/-0.06	65	+0.06/-0.00	20	27.5	930	49	200	115	M6	15
MCDA-40-F	40	+0.0/-0.06	65	+0.06/-0.00	20	27.5	980	49	190	115	M6	15
MCDA-42-F	42	+0.0/-0.06	75	+0.06/-0.00	24	33.5	1580	75	235	130	M8	37
MCDA-45-F	45	+0.0/-0.06	75	+0.06/-0.00	24	33.5	1700	76	220	130	M8	37
MCDA-48-F	48	+0.0/-0.06	80	+0.06/-0.00	24	33.5	1790	74	210	120	M8	37
MCDA-50-F	50	+0.0/-0.06	80	+0.06/-0.00	24	33.5	1870	75	200	120	M8	37
MCDA-55-F	55	+0.0/-0.08	85	+0.08/-0.00	24	33.5	2390	88	210	135	M8	37
MCDA-60-F	60	+0.0/-0.08	90	+0.08/-0.00	24	33.5	2610	88	190	125	M8	37
MCDA-65-F	65	+0.0/-0.08	95	+0.08/-0.00	24	33.5	3100	95	200	130	M8	37
MCDA-70-F	70	+0.0/-0.08	110	+0.08/-0.00	28	39.5	4600	132	210	130	M10	70
MCDA-75-F	75	+0.0/-0.08	115	+0.08/-0.00	28	39.5	4900	131	195	125	M10	70
MCDA-80-F	80	+0.0/-0.08	120	+0.08/-0.00	28	39.5	5200	131	180	120	M10	70
MCDA-85-F	85	+0.0/-0.09	125	+0.09/-0.00	28	39.5	6300	148	195	130	M10	70
MCDA-90-F	90	+0.0/-0.09	130	+0.09/-0.00	28	39.5	6600	147	180	125	M10	70
MCDA-95-F	95	+0.0/-0.09	135	+0.09/-0.00	28	39.5	7900	167	195	135	M10	70
MCDA-100-F	100	+0.0/-0.09	145	+0.09/-0.00	33	47.0	9750	195	195	135	M12	127

For warranty/disclaimer information see pg. 2

- Not self-centering.
- Easily assembly/disassembly.
- High torque capacity.
- Black oxide finish for smooth torquing, holding power and surface protection.
- Accommodates large shaft and hub tolerances.

Note 1 Hardware is alloy steel with black oxide finish.
Note 2 For engineering information and installation/removal instructions see pg. 7.
Note 3 Performance ratings are for guidance only. The user must determine suitability for a particular application.

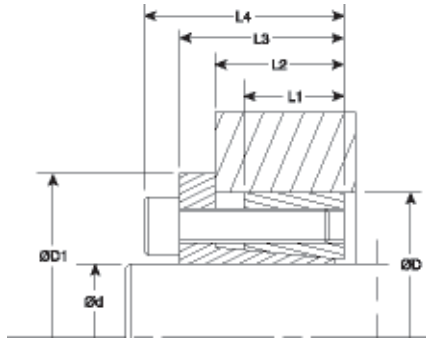


RULAND HUBLOK™ SINGLE TAPER STYLE CLAMPING DEVICE

INCH DIMENSION SERIES - WITH FLANGE

CDF

CLAMPING DEVICES



PART NO.	INCH SERIES			TOLERANCE		L1 in	L2 in	L3 in	L4 in	TORQUE RATING ft-lb	AXIAL LOAD lb	PRESSURE		CAP SCREW	
	d in	OD in	D1 in	SHAFT in	HUB in							SHAFT psi	HUB psi	SIZE	SEATING TORQUE in-lb
CDF-12-F	0.750	1.850	2.205	+0.000/-0.0013	+0.0016/-0.0000	.669	.866	1.102	1.339	202	6300	31300	13520	M6	156
CDF-14-F	0.875	1.850	2.205	+0.000/-0.0013	+0.0016/-0.0000	.669	.866	1.102	1.339	217	6300	28450	13520	M6	156
CDF-16-F	1.000	1.969	2.323	+0.000/-0.0013	+0.0016/-0.0000	.669	.866	1.102	1.339	295	7194	29880	14504	M6	156
CDF-18-F	1.125	2.165	2.520	+0.000/-0.0013	+0.0018/-0.0000	.669	.866	1.102	1.339	332	7194	27030	13053	M6	156
CDF-19-F	1.188	2.165	2.520	+0.000/-0.0013	+0.0018/-0.0000	.669	.866	1.102	1.339	361	7650	24900	13520	M6	156
CDF-20-F	1.250	2.362	2.717	+0.000/-0.0016	+0.0018/-0.0000	.669	.866	1.102	1.339	513	10125	32010	16360	M6	156
CDF-22-F	1.375	2.362	2.717	+0.000/-0.0016	+0.0018/-0.0000	.669	.866	1.102	1.339	561	9667	28450	15954	M6	156
CDF-24-F	1.500	2.559	2.913	+0.000/-0.0016	+0.0018/-0.0000	.669	.866	1.102	1.339	642	9667	24900	14504	M6	156
CDF-26-F	1.625	2.953	3.307	+0.000/-0.0016	+0.0018/-0.0000	.787	.984	1.299	1.614	1092	16425	33430	17790	M8	360
CDF-28-F	1.750	2.953	3.307	+0.000/-0.0016	+0.0018/-0.0000	.787	.984	1.299	1.614	1193	16425	30590	17790	M8	360
CDF-30-F	1.875	3.150	3.504	+0.000/-0.0016	+0.0018/-0.0000	.787	.984	1.299	1.614	1259	16425	29170	17070	M8	360
CDF-31-F	1.938	3.150	3.504	+0.000/-0.0016	+0.0018/-0.0000	.787	.984	1.299	1.614	1324	16425	27740	17070	M8	360
CDF-32-F	2.000	3.150	3.504	+0.000/-0.0018	+0.0018/-0.0000	.787	.984	1.299	1.614	1345	16425	27320	17070	M8	360
CDF-34-F	2.125	3.346	3.700	+0.000/-0.0018	+0.0022/-0.0000	.787	.984	1.299	1.614	1623	17895	28450	17405	M8	360
CDF-35-F	2.188	3.346	3.700	+0.000/-0.0018	+0.0022/-0.0000	.787	.984	1.299	1.614	1678	18675	28170	18500	M8	360
CDF-36-F	2.250	3.543	3.898	+0.000/-0.0018	+0.0022/-0.0000	.787	.984	1.299	1.614	1729	18675	27740	17790	M8	360
CDF-38-F	2.375	3.543	3.898	+0.000/-0.0018	+0.0022/-0.0000	.787	.984	1.299	1.614	1770	17895	26320	17405	M8	360
CDF-39-F	2.438	3.740	4.094	+0.000/-0.0018	+0.0022/-0.0000	.787	.984	1.299	1.614	2109	21150	28450	18500	M8	360
CDF-40-F	2.500	3.740	4.094	+0.000/-0.0018	+0.0022/-0.0000	.787	.984	1.299	1.614	2156	21150	27740	18500	M8	360
CDF-44-F	2.750	4.331	4.685	+0.000/-0.0018	+0.0022/-0.0000	.945	1.181	1.575	1.969	3379	29225	29880	19210	M10	732
CDF-46-F	2.875	4.528	4.882	+0.000/-0.0018	+0.0022/-0.0000	.945	1.181	1.575	1.969	3516	29225	29170	17790	M10	732
CDF-47-F	2.938	4.528	4.882	+0.000/-0.0018	+0.0022/-0.0000	.945	1.181	1.575	1.969	3617	29225	27740	17790	M10	732
CDF-48-F	3.000	4.724	5.079	+0.000/-0.0018	+0.0022/-0.0000	.945	1.181	1.575	1.969	3646	29225	27740	17790	M10	732
CDF-52-F	3.250	4.921	5.276	+0.000/-0.0018	+0.0022/-0.0000	.945	1.181	1.575	1.969	3835	29225	26320	17790	M10	732
CDF-54-F	3.375	4.921	5.276	+0.000/-0.0022	+0.0025/-0.0000	.945	1.181	1.575	1.969	4558	33300	27740	19210	M10	732
CDF-55-F	3.438	5.118	5.472	+0.000/-0.0022	+0.0025/-0.0000	.945	1.181	1.575	1.969	4732	33300	27740	18500	M10	732
CDF-56-F	3.500	5.118	5.472	+0.000/-0.0022	+0.0025/-0.0000	.945	1.181	1.575	1.969	4884	33300	26320	18500	M10	732
CDF-60-F	3.750	5.315	5.669	+0.000/-0.0022	+0.0025/-0.0000	.945	1.181	1.575	1.969	5716	37350	27740	19210	M10	732
CDF-63-F	3.938	5.709	6.063	+0.000/-0.0022	+0.0025/-0.0000	1.024	1.260	1.732	2.205	7018	43650	28450	19920	M12	1284
CDF-64-F	4.000	5.709	6.063	+0.000/-0.0022	+0.0025/-0.0000	1.024	1.260	1.732	2.205	7130	43650	28030	19920	M12	1284

For warranty/disclaimer information see pg. 2

- Medium-high torque.
- Self-centering.
- Limited installation time.
- Interchangeable with the CDA series.

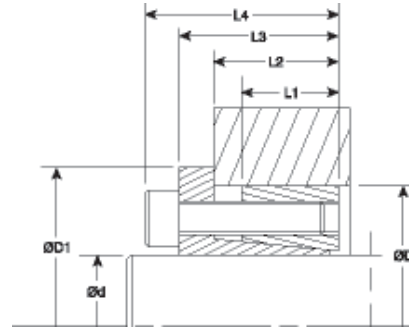
Note 1 Hardware is alloy steel with black oxide finish.

Note 2 For engineering information and installation/removal instructions see pg. 7.

Note 3 Performance ratings are for guidance only. The user must determine suitability for a particular application.



RULAND MANUFACTURING CO., INC.
800-225-4234 fax 800-929-9205
www.ruland.com



CLAMPING DEVICES

PART NO.	METRIC SERIES			TOLERANCE		L1 mm	L2 mm	L3 mm	L4 mm	TORQUE RATING Nm	AXIAL LOAD kN	PRESSURE		CAP SCREW SEATING TORQUE Nm	
	d mm	OD mm	D1 mm	SHAFT mm	HUB mm							SHAFT N/mm ²	HUB N/mm ²	SIZE	TORQUE Nm
MCDF-20-F	20	47	56	+0.00/-0.03	+0.04/-0.00	17	22	28	34	280	28	220	95	M6	17
MCDF-22-F	22	47	56	+0.00/-0.03	+0.04/-0.00	17	22	28	34	300	28	200	95	M6	17
MCDF-24-F	24	50	59	+0.00/-0.03	+0.04/-0.00	17	22	28	34	330	28	180	90	M6	17
MCDF-25-F	25	50	59	+0.00/-0.03	+0.04/-0.00	17	22	28	34	400	32	210	100	M6	17
MCDF-28-F	28	55	64	+0.00/-0.03	+0.05/-0.00	17	22	28	34	450	32	190	90	M6	17
MCDF-30-F	30	55	64	+0.00/-0.03	+0.05/-0.00	17	22	28	34	490	32	175	90	M6	17
MCDF-32-F	32	60	69	+0.00/-0.04	+0.05/-0.00	17	22	28	34	700	43	220	110	M6	17
MCDF-35-F	35	60	69	+0.00/-0.04	+0.05/-0.00	17	22	28	34	760	43	200	110	M6	17
MCDF-38-F	38	65	74	+0.00/-0.04	+0.05/-0.00	17	22	28	34	820	43	185	100	M6	17
MCDF-40-F	40	65	74	+0.00/-0.04	+0.05/-0.00	17	22	28	34	870	43	175	100	M6	17
MCDF-42-F	42	75	84	+0.00/-0.04	+0.05/-0.00	20	25	33	41	1530	73	225	125	M8	41
MCDF-45-F	45	75	84	+0.00/-0.04	+0.05/-0.00	20	25	33	41	1650	73	215	125	M8	41
MCDF-48-F	48	80	89	+0.00/-0.04	+0.05/-0.00	20	25	33	41	1760	73	200	120	M8	41
MCDF-50-F	50	80	89	+0.00/-0.04	+0.05/-0.00	20	25	33	41	1830	73	195	120	M8	41
MCDF-55-F	55	85	94	+0.00/-0.05	+0.06/-0.00	20	25	33	41	2200	80	200	120	M8	41
MCDF-60-F	60	90	99	+0.00/-0.05	+0.06/-0.00	20	25	33	41	2400	80	185	120	M8	41
MCDF-65-F	65	95	104	+0.00/-0.05	+0.06/-0.00	20	25	33	41	2600	80	190	110	M8	41
MCDF-70-F	70	110	119	+0.00/-0.05	+0.06/-0.00	24	30	40	50	4600	130	210	130	M10	83
MCDF-75-F	75	115	124	+0.00/-0.05	+0.06/-0.00	24	30	40	50	5000	133	195	125	M10	83
MCDF-80-F	80	120	129	+0.00/-0.05	+0.06/-0.00	24	30	40	50	5300	133	185	125	M10	83
MCDF-85-F	85	125	134	+0.00/-0.06	+0.06/-0.00	24	30	40	50	6300	148	195	135	M10	83
MCDF-90-F	90	130	139	+0.00/-0.06	+0.06/-0.00	24	30	40	50	6750	148	185	130	M10	83
MCDF-95-F	95	135	144	+0.00/-0.06	+0.06/-0.00	24	30	40	50	7900	166	195	135	M10	83
MCDF-100-F	100	145	154	+0.00/-0.06	+0.06/-0.00	26	32	44	56	9700	194	200	140	M12	145

For warranty/disclaimer information see pg. 2

- Medium-high torque.
- Self-centering.
- Limited installation time.
- Interchangeable with the MCDA series.

Note 1 Hardware is alloy steel with black oxide finish.
Note 2 For engineering information and installation/removal instructions see pg. 7.
Note 3 Performance ratings are for guidance only. The user must determine suitability for a particular application.



Material
1045 Steel.

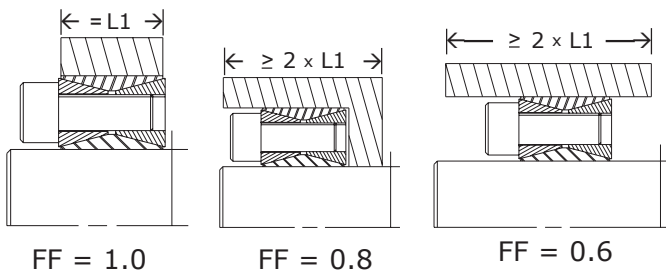
Hardware

Alloy Steel Socket Cap Screws, heat treated, meet or exceed ASTM specification B18.3.1M and ASTM A574M Property class 12.9.

Black Oxide

Hot Process Black Oxide surface preparation, impregnated with naphthenic oil, centrifugally dried. The black oxide on our clamping devices is formulated as part of the total performance of the product. It enhances the holding ability of the clamping device, has anti-stick-slip characteristics and helps to keep the torque rating of the screw within its designed parameters. It also provides corrosion protection, although it is not intended to be used as an outside weather protective finish.

Minimum Hub Diameter Calculations



$$D_{H_{MIN}} = D_{CD} \sqrt{\frac{Y_{HUB} + (FF \times P_{HUB})}{Y_{HUB} - (FF \times P_{HUB})}}$$

$D_{H_{MIN}}$ = Minimum Required Hub Diameter (in)

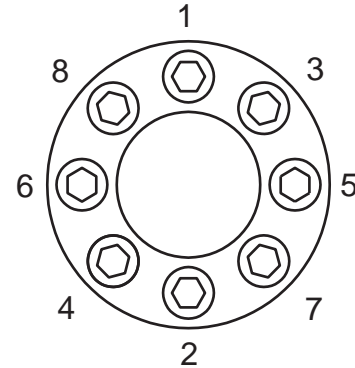
D_{CD} = Outside Diameter of Clamping Device (in) - see tables on pgs. 3, 4, 5, 6.

Y_{HUB} = Yield Point of Hub Material (psi)

FF = Form Factor (see above illustrations)

P_{HUB} = Hub Surface Pressure (psi) - see tables on pgs. 3, 4, 5, 6.

Installation Instructions



1. Thoroughly clean the shaft and hub surfaces.
2. Apply a thin coat of light oil on the shaft and hub surfaces.
3. Slide the clamping device onto the shaft and into the hub.
4. Use a torque wrench with an unplated drive key to gradually tighten all screws in several stages in the pattern shown in the above diagram (# of screws may vary). Repeat the pattern until reaching the recommended seating torque shown in the specification tables.
5. Never use an oil with molybdenum disulfide or other substances that dramatically reduce friction coefficient.

Removal Instructions

CDA/MCDA

1. Loosening the screws allows the clamping elements to release naturally for easy removal in most circumstances.
2. If the elements do not release easily, there are release holes that have threads for the next larger screw size.
3. Remove screws marking the release holes and insert larger screws (not supplied).
4. Lightly hammer to release the clamping elements.

CDF/MCDF

1. Loosen all clamping screws.
2. Insert screws into the threaded release holes.
3. Tighten release screws gradually in the pattern shown in the above diagram (# of screws may vary) until the clamping elements are released.



AVAILABLE FROM RULAND

We are committed to have the largest variety of sizes and styles in the industry. In addition to the items listed below, we can manufacture an extensive variety of special designs. Please contact us with your custom needs.

OLDHAM COUPLINGS

Paradrive™ oldham coupling. Clamp and set screw styles



BELLOWS COUPLINGS

Belflex™ bellows coupling. Clamp and set screw styles.



BEAM COUPLINGS

Flexbeam™ flexible coupling. Clamp and set screw styles.



JAW COUPLINGS

Jawflex™ jaw coupling. Clamp and set screw styles.



CLAMPING DEVICES

Hublok™ clamping device. Single and dual taper styles.



SHAFT COLLARS

Nomar® shaft collar. One- and two-piece styles.



DISC COUPLINGS

Discflex™ disc coupling. Clamp and set screw styles.



RIGID COUPLINGS

Nomar® rigid coupling. One- and two-piece styles.



RULAND MANUFACTURING CO., INC.
800-225-4234 fax 800-929-9205
www.ruland.com

