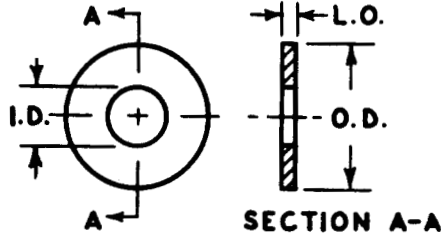


## FLAT INSULATING WASHERS SCREW CLEARANCE NOS. 00, 0, 1, 2, 3



TOLERANCES	
I.D.	+ .010, - .000
O.D.	+ .015, - .005
L.O.	± .003 for .016 - .032 Thick.
	± .005 for .040 - .047 Thick
	± .006 for .062 Thick.
	± .009 for .093 Thick.
	± .010 for .094 Thick. & over

SCREW SIZE	I. D.	L. O.	O. D.	MATERIAL		
				NYLON (N)	TEFLON (T)	PHENOLIC†
00 (.047)	.055	.016	.125	2199-N055	2199-T055	2199-PH055
0 (.060)	.063	.016	.187	2201-N063	2201-T063	2201-PH063
		.016	.218	2202-N063	2202-T063	2202-PH063
		.016	.250	2203-N063	2203-T063	2203-PH063
		.016	.281	2204-N063	2204-T063	2204-PH063
		.031	.187	2252-N063	2252-T063	2252-PH063
		.031	.218	2253-N063	2253-T063	2253-PH063
		.031	.250	2254-N063	2254-T063	2254-PH063
		.031	.281	2255-N063	2255-T063	2255-PH063
		.062	.187	2314-N063	2314-T063	2314-PH063
		.062	.218	2315-N063	2315-T063	2315-PH063
		.062	.250	2316-N063	2316-T063	2316-PH063
		.062	.281	2317-N063	2317-T063	2317-PH063
		.093	.250	2338-N063	2338-T063	2338-PH063
		.093	.281	2339-N063	2339-T063	2339-PH063
		.067	.016	.125	2199-N067	2199-T067
1 (.073)	.078	.031	.187	2252-N078	2252-T078	2252-PH078

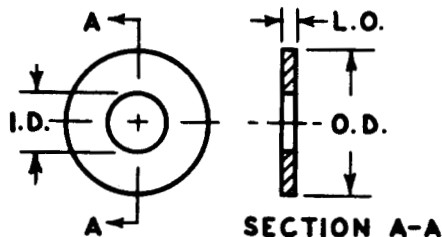
Continued

SCREW SIZE	I. D.	L. O.	O. D.	MATERIAL		
				NYLON (N)	TEFLON (T)	PHENOLIC†
2 (.086)	.089	.016	.187	2201-N089	2201-T089	2201-PH089
		.016	.218	2202-N089	2202-T089	2202-PH089
		.016	.250	2203-N089	2203-T089	2203-PH089
		.016	.281	2204-N089	2204-T089	2204-PH089
		.016	.312	2205-N089	2205-T089	2205-PH089
		.031	.187	2252-N089	2252-T089	2252-PH089
		.031	.218	2253-N089	2253-T089	2253-PH089
		.031	.250	2254-N089	2254-T089	2254-PH089
		.031	.281	2255-N089	2255-T089	2255-PH089
		.031	.312	2256-N089	2256-T089	2256-PH089
		.031	.343	2257-N089	2257-T089	2257-PH089
		.031	.375	2258-N089	2258-T089	2258-PH089
		.031	.437	2259-N089	2259-T089	2259-PH089
		.031	.500	2260-N089	2260-T089	2260-PH089
		.031	.562	2261-N089	2261-T089	2261-PH089
3 (.099)	.104	.016	.180	2200-N104	2200-T104	2200-PH104
		.016	.187	2201-N104	2201-T104	2201-PH104
		.016	.218	2202-N104	2202-T104	2202-PH104
		.016	.250	2203-N104	2203-T104	2203-PH104
		.016	.281	2204-N104	2204-T104	2204-PH104
		.016	.312	2205-N104	2205-T104	2205-PH104

†PHENOLIC (PH)

Continued next page

## FLAT INSULATING WASHERS SCREW CLEARANCE NOS. 3, 4



TOLERANCES	
I.D.	+ .010, - .000
O.D.	+ .015, - .005
L.O.	± .003 for .016 - .032 Thick.
	± .005 for .040 - .047 Thick
	± .006 for .062 Thick.
	± .009 for .093 Thick.
	± .010 for .094 Thick. & over

Continued from previous page

SCREW SIZE	I. D.	L. O.	O. D.	MATERIAL		
				NYLON (N)	TEFLON (T)	PHENOLIC†
3 (.099)	.104	.025	.180	2234-N104	2234-T104	2234-PH104
	↓	.031	.180	2251-N104	2251-T104	2251-PH104
	↓	.031	.187	2252-N104	2252-T104	2252-PH104
	↓	.031	.218	2253-N104	2253-T104	2253-PH104
	↓	.109	.031	2254-N109	2254-T109	2254-PH109
	↓	.104	.031	2255-N104	2255-T104	2255-PH104
	↓	.031	.312	2256-N104	2256-T104	2256-PH104
	↓	.031	.343	2257-N104	2257-T104	2257-PH104
	↓	.031	.375	2258-N104	2258-T104	2258-PH104
	↓	.031	.437	2259-N104	2259-T104	2259-PH104
	↓	.031	.500	2260-N104	2260-T104	2260-PH104
	↓	.031	.562	2261-N104	2261-T104	2261-PH104
	↓	.031	.625	2264-N104	2264-T104	2264-PH104
	↓	.062	.250	2316-N104	2316-T104	2316-PH104
	↓	.062	.281	2317-N104	2317-T104	2317-PH104
	↓	.062	.312	2318-N104	2318-T104	2318-PH104
	↓	.062	.343	2319-N104	2319-T104	2319-PH104
	↓	.062	.375	2320-N104	2320-T104	2320-PH104
	↓	.062	.437	2321-N104	2321-T104	2321-PH104
	↓	.062	.500	2322-N104	2322-T104	2322-PH104
	↓	.062	.562	2323-N104	2323-T104	2323-PH104
	↓	.062	.625	2326-N104	2326-T104	2326-PH104

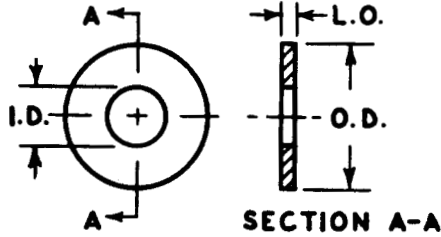
Continued

SCREW SIZE	I. D.	L. O.	O. D.	MATERIAL		
				NYLON (N)	TEFLON (T)	PHENOLIC†
4 (.112)	.116	.016	.187	2201-N116	2201-T116	2201-PH116
	↓	.016	.218	2202-N116	2202-T116	2202-PH116
	↓	.120	.016	2203-N120	2203-T120	2203-PH120
	↓	.116	.016	2204-N116	2204-T116	2204-PH116
	↓	.016	.312	2205-N116	2205-T116	2205-PH116
	↓	.120	.020	2221-N120	2221-T120	2221-PH120
	↓	.116	.031	2252-N116	2252-T116	2252-PH116
	↓	.031	.218	2253-N116	2253-T116	2253-PH116
	↓	.031	.250	2254-N116	2254-T116	2254-PH116
	↓	.120	.031	2255-N120	2255-T120	2255-PH120
	↓	.116	.031	2256-N116	2256-T116	2256-PH116
	↓	.031	.343	2257-N116	2257-T116	2257-PH116
	↓	.031	.375	2258-N116	2258-T116	2258-PH116
	↓	.031	.437	2259-N116	2259-T116	2259-PH116
	↓	.031	.500	2260-N116	2260-T116	2260-PH116
	↓	.031	.562	2261-N116	2261-T116	2261-PH116
	↓	.031	.625	2264-N116	2264-T116	2264-PH116
	↓	.120	.040	2275-N120	2275-T120	2275-PH120
	↓	.116	.047	2288-N116	2288-T116	2288-PH116
	↓	.062	.250	2316-N116	2316-T116	2316-PH116
	↓	.120	.062	2317-N120	2317-T120	2317-PH120
	↓	.116	.062	2318-N116	2318-T116	2318-PH116
	↓	.062	.343	2319-N116	2319-T116	2319-PH116
	↓	.125	.062	2320-N125	2320-T125	2320-PH125
↓	.116	.062	2321-N116	2321-T116	2321-PH116	
↓	.062	.500	2322-N116	2322-T116	2322-PH116	
↓	.062	.562	2323-N116	2323-T116	2323-PH116	
↓	.062	.625	2326-N116	2326-T116	2326-PH116	

†PHENOLIC (PH)

5 Pasco Hill Road • Cromwell, CT 06416-1093  
 Phone: 860-828-0847 • Call Toll Free: 800-243-6032 • Fax: 860-828-0381  
 Web Address: <http://www.amatom.com> • E-Mail: [sales@amatom.com](mailto:sales@amatom.com)

## FLAT INSULATING WASHERS SCREW CLEARANCE NOS. 5, 6



TOLERANCES	
I.D.	+ .010, - .000
O.D.	+ .015, - .005
L.O.	± .003 for .016 - .032 Thick.
	± .005 for .040 - .047 Thick
	± .006 for .062 Thick.
	± .009 for .093 Thick.
	± .010 for .094 Thick. & over

SCREW SIZE	I. D.	L. O.	O. D.	MATERIAL		
				NYLON (N)	TEFLON (T)	PHENOLIC†
5 (.125)	.129	.016	.187	2201-N129	2201-T129	2201-PH129
		.016	.218	2202-N129	2202-T129	2202-PH129
		.016	.250	2203-N129	2203-T129	2203-PH129
		.016	.281	2204-N129	2204-T129	2204-PH129
		.016	.312	2205-N129	2205-T129	2205-PH129
		.031	.187	2252-N129	2252-T129	2252-PH129
		.031	.218	2253-N129	2253-T129	2253-PH129
		.031	.250	2254-N129	2254-T129	2254-PH129
		.031	.281	2255-N129	2255-T129	2255-PH129
		.031	.312	2256-N129	2256-T129	2256-PH129
		.031	.343	2257-N129	2257-T129	2257-PH129
		.031	.375	2258-N129	2258-T129	2258-PH129
		.031	.437	2259-N129	2259-T129	2259-PH129
		.031	.500	2260-N129	2260-T129	2260-PH129
		.031	.562	2261-N129	2261-T129	2261-PH129
		.031	.625	2264-N129	2264-T129	2264-PH129
		.040	.218	2273-N129	2273-T129	2273-PH129
		.047	.312	2289-N129	2289-T129	2289-PH129
		.062	.250	2316-N129	2316-T129	2316-PH129
		.062	.281	2317-N129	2317-T129	2317-PH129
		.062	.312	2318-N129	2318-T129	2318-PH129
		.062	.343	2319-N129	2319-T129	2319-PH129
		.062	.375	2320-N129	2320-T129	2320-PH129
		.062	.437	2321-N129	2321-T129	2321-PH129
		.062	.500	2322-N129	2322-T129	2322-PH129
		.062	.562	2323-N129	2323-T129	2323-PH129
		.062	.625	2326-N129	2326-T129	2326-PH129
		6 (.138)	.141	.016	.187	2201-N141
.016	.218			2202-N141	2202-T141	2202-PH141
.016	.250			2203-N141	2203-T141	2203-PH141
.016	.281			2204-N141	2204-T141	2204-PH141
.016	.312			2205-N141	2205-T141	2205-PH141
.031	.218			2253-N141	2253-T141	2253-PH141
.031	.250			2254-N141	2254-T141	2254-PH141
.031	.281			2255-N141	2255-T141	2255-PH141
.031	.312			2256-N141	2256-T141	2256-PH141

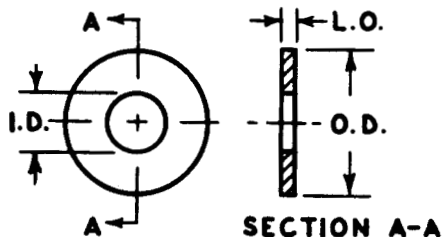
SCREW SIZE	I. D.	L. O.	O. D.	MATERIAL		
				NYLON (N)	TEFLON (T)	PHENOLIC†
6 (.138)	.141	.031	.343	2257-N141	2257-T141	2257-PH141
		.031	.375	2258-N141	2258-T141	2258-PH141
		.031	.437	2259-N141	2259-T141	2259-PH141
		.031	.500	2260-N141	2260-T141	2260-PH141
		.031	.562	2261-N141	2261-T141	2261-PH141
		.031	.625	2264-N141	2264-T141	2264-PH141
		.047	.312	2289-N141	2289-T141	2289-PH141
		.062	.250	2316-N141	2316-T141	2316-PH141
		.062	.281	2317-N141	2317-T141	2317-PH141
		.062	.312	2318-N141	2318-T141	2318-PH141
		.062	.343	2319-N141	2319-T141	2319-PH141
		.062	.375	2320-N141	2320-T141	2320-PH141
		.062	.437	2321-N141	2321-T141	2321-PH141
		.062	.500	2322-N141	2322-T141	2322-PH141
		.062	.562	2323-N141	2323-T141	2323-PH141
		.062	.625	2326-N141	2326-T141	2326-PH141
		.093	.312	2340-N141	2340-T141	2340-PH141
		.093	.343	2341-N141	2341-T141	2341-PH141
		.093	.375	2342-N141	2342-T141	2342-PH141
		.093	.437	2344-N141	2344-T141	2344-PH141
		.093	.500	2345-N141	2345-T141	2345-PH141
		.093	.562	2346-N141	2346-T141	2346-PH141
		.093	.625	2349-N141	2349-T141	2349-PH141
		.150	.312	2222-N150	2222-T150	2222-PH150
		.031	.312	2256-N150	2256-T150	2256-PH150
		.040	.312	2276-N150	2276-T150	2276-PH150
		.050	.312	2301-N150	2301-T150	2301-PH150
		.062	.312	2318-N150	2318-T150	2318-PH150
.156	.031	.312	2256-N156	2256-T156	2256-PH156	
.063	.500	2260-N156	2260-T156	2260-PH156		
.063	.375	2320-N156	2320-T156	2320-PH156		
.158	.135	.375	2376-N158	2376-T158	2376-PH158	
.163	.125	.377	2361-N163	2361-T163	2361-PH163	
.163	.125	.500	2363-N163	2363-T163	2363-PH163	

†PHENOLIC (PH)

Continued

5 Pasco Hill Road • Cromwell, CT 06416-1093  
 Phone: 860-828-0847 • Call Toll Free: 800-243-6032 • Fax: 860-828-0381  
 Web Address: <http://www.amatom.com> • E-Mail: [sales@amatom.com](mailto:sales@amatom.com)

## FLAT INSULATING WASHERS SCREW CLEARANCE NOS. 8, 10, 12



TOLERANCES	
I.D.	+ .010, - .000
O.D.	+ .015, - .005
L.O.	± .003 for .016 - .032 Thick. ± .005 for .040 - .047 Thick ± .006 for .062 Thick. ± .009 for .093 Thick. ± .010 for .094 Thick. & over

SCREW SIZE	I. D.	L. O.	O. D.	MATERIAL		
				NYLON (N)	TEFLON (T)	PHENOLIC†
8 (.164)	.165	.125	.625	2367-N165	2367-T165	2367-PH165
	.171	.020	.375	2224-N171	2224-T171	2224-PH171
		.031	.250	2254-N171	2254-T171	2254-PH171
		.031	.281	2255-N171	2255-T171	2255-PH171
		.031	.312	2256-N171	2256-T171	2256-PH171
		.031	.343	2257-N171	2257-T171	2257-PH171
		.031	.375	2258-N171	2258-T171	2258-PH171
		.031	.437	2259-N171	2259-T171	2259-PH171
		.031	.500	2260-N171	2260-T171	2260-PH171
		.031	.562	2261-N171	2261-T171	2261-PH171
		.031	.625	2264-N171	2264-T171	2264-PH171
		.040	.375	2278-N171	2278-T171	2278-PH171
		.050	.375	2303-N171	2303-T171	2303-PH171
		.062	.312	2318-N171	2318-T171	2318-PH171
		.062	.343	2319-N171	2319-T171	2319-PH171
		.062	.375	2320-N171	2320-T171	2320-PH171
		.062	.437	2321-N171	2321-T171	2321-PH171
		.062	.500	2322-N171	2322-T171	2322-PH171
		.062	.562	2323-N171	2323-T171	2323-PH171
		.062	.625	2326-N171	2326-T171	2326-PH171
	.187	.016	.625	2213-N187	2213-T187	2213-PH187
		.031	.375	2258-N187	2258-T187	2258-PH187
		.062	.312	2318-N187	2318-T187	2318-PH187
		.062	.437	2321-N187	2321-T187	2321-PH187
		.093	.375	2342-N187	2342-T187	2342-PH187
		.093	.437	2344-N187	2344-T187	2344-PH187
		.093	.500	2345-N187	2345-T187	2345-PH187
		.093	.562	2346-N187	2346-T187	2346-PH187
		.093	.625	2349-N187	2349-T187	2349-PH187
10 (.190)	.190	.125	.318	2359-N190	2359-T190	2359-PH190
	.194	.020	.437	2225-N194	2225-T194	2225-PH194
		.031	.312	2256-N194	2256-T194	2256-PH194
		.031	.343	2257-N194	2257-T194	2257-PH194
		.031	.375	2258-N194	2258-T194	2258-PH194
		.031	.437	2259-N194	2259-T194	2259-PH194

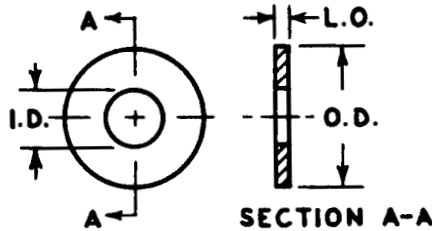
SCREW SIZE	I. D.	L. O.	O. D.	MATERIAL		
				NYLON (N)	TEFLON (T)	PHENOLIC
10 (.190)	.190	.031	.500	2260-N194	2260-T194	2260-PH194
	.194	.031	.562	2261-N194	2261-T194	2261-PH194
		.031	.625	2264-N194	2264-T194	2264-PH194
		.031	.687	2265-N194	2265-T194	2265-PH194
		.031	.750	2267-N194	2267-T194	2267-PH194
		.040	.437	2279-N194	2279-T194	2279-PH194
		.050	.437	2304-N194	2304-T194	2304-PH194
		.062	.312	2318-N194	2318-T194	2318-PH194
		.062	.343	2319-N194	2319-T194	2319-PH194
		.062	.375	2320-N194	2320-T194	2320-PH194
		.062	.437	2321-N194	2321-T194	2321-PH194
		.062	.500	2322-N194	2322-T194	2322-PH194
		.062	.562	2323-N194	2323-T194	2323-PH194
		.062	.625	2326-N194	2326-T194	2326-PH194
		.062	.687	2327-N194	2327-T194	2327-PH194
		.062	.750	2329-N194	2329-T194	2329-PH194
		.093	.375	2342-N194	2342-T194	2342-PH194
		.093	.437	2344-N194	2344-T194	2344-PH194
		.093	.500	2345-N194	2345-T194	2345-PH194
		.093	.562	2346-N194	2346-T194	2346-PH194
	.093	.625	2349-N194	2349-T194	2349-PH194	
	.093	.687	2350-N194	2350-T194	2350-PH194	
	.093	.750	2352-N194	2352-T194	2352-PH194	
	.200	.062	.437	2321-N200	2321-T200	2321-PH200
12 (.216)	.219	.031	.312	2256-N219	2256-T219	2256-PH219
		.031	.375	2258-N219	2258-T219	2258-PH219
		.031	.437	2259-N219	2259-T219	2259-PH219
		.031	.500	2260-N219	2260-T219	2260-PH219
		.062	.375	2320-N219	2320-T219	2320-PH219
		.062	.437	2321-N219	2321-T219	2321-PH219
		.062	.500	2322-N219	2322-T219	2322-PH219
		.093	.437	2344-N219	2344-T219	2344-PH219
		.093	.500	2345-N219	2345-T219	2345-PH219
		.125	.278	2358-N219	2358-T219	2358-PH219

†PHENOLIC (PH)

Continued

5 Pasco Hill Road • Cromwell, CT 06416-1093  
 Phone: 860-828-0847 • Call Toll Free: 800-243-6032 • Fax: 860-828-0381  
 Web Address: <http://www.amatom.com> • E-Mail: [sales@amatom.com](mailto:sales@amatom.com)

## FLAT INSULATING WASHERS SCREW CLEARANCE NOS. 1/4, 5/16, 3/8



TOLERANCES	
I. D.	+ .010, - .000
O. D.	+ .015, - .005
L. O.	± .003 for .016 - .032 Thick.
	± .005 for .040 - .047 Thick
	± .006 for .062 Thick.
	± .009 for .093 Thick.
	± .010 for .094 Thick. & over

INSULATING WASHERS

SCREW SIZE	I. D.	L. O.	O. D.	MATERIAL		
				NYLON (N)	TEFLON (T)	PHENOLIC†
1/4 (.250)	.253	.031	.437	2259-N253	2259-T253	2259-PH253
		.031	.500	2260-N253	2260-T253	2260-PH253
		.031	.562	2261-N253	2261-T253	2261-PH253
		.031	.625	2264-N253	2264-T253	2264-PH253
		.031	.687	2265-N253	2265-T253	2265-PH253
		.031	.750	2267-N253	2267-T253	2267-PH253
		.031	.812	2268-N253	2268-T253	2268-PH253
		.031	.875	2269-N253	2269-T253	2269-PH253
		.047	.500	2293-N253	2293-T253	2293-PH253
		.062	.437	2321-N253	2321-T253	2321-PH253
		.062	.500	2322-N253	2322-T253	2322-PH253
		.062	.562	2323-N253	2323-T253	2323-PH253
		.062	.625	2326-N253	2326-T253	2326-PH253
		.062	.687	2327-N253	2327-T253	2327-PH253
		.062	.750	2329-N253	2329-T253	2329-PH253
		.062	.812	2330-N253	2330-T253	2330-PH253
		.062	.875	2331-N253	2331-T253	2331-PH253
		.093	.437	2344-N253	2344-T253	2344-PH253
		.093	.500	2345-N253	2345-T253	2345-PH253
		.093	.562	2346-N253	2346-T253	2346-PH253
		.093	.625	2349-N253	2349-T253	2349-PH253
		.093	.687	2350-N253	2350-T253	2350-PH253
		.125	.312	2359-N253	2359-T253	2359-PH253
		.260	.020	2231-N260	2231-T260	2231-PH260
		.031	.687	2265-N260	2265-T260	2265-PH260
		.031	.875	2269-N260	2269-T260	2269-PH260
		.040	.687	2285-N260	2285-T260	2285-PH260
		.050	.687	2310-N260	2310-T260	2310-PH260
		.062	.562	2323-N260	2323-T260	2323-PH260
		.062	.687	2327-N260	2327-T260	2327-PH260
.281	.062	2326-N281	2326-T281	2326-PH281		
.307	.125	2365-N307	2365-T307	2365-PH307		

Continued

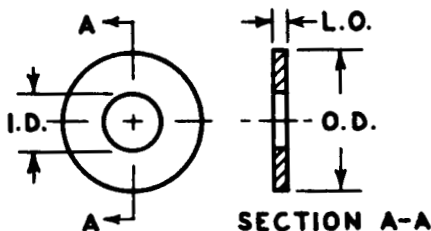
SCREW SIZE	I. D.	L. O.	O. D.	MATERIAL				
				NYLON (N)	TEFLON (T)	PHENOLIC†		
5/16 (.312)	.317	.020	.500	2226-N317	2226-T317	2226-PH317		
		.031	.500	2260-N317	2260-T317	2260-PH317		
		.031	.562	2261-N317	2261-T317	2261-PH317		
		.031	.625	2264-N317	2264-T317	2264-PH317		
		.031	.687	2265-N317	2265-T317	2265-PH317		
		.031	.750	2267-N317	2267-T317	2267-PH317		
		.062	.500	2322-N317	2322-T317	2322-PH317		
		.062	.562	2323-N317	2323-T317	2323-PH317		
		.062	.625	2326-N317	2326-T317	2326-PH317		
		.062	.687	2327-N317	2327-T317	2327-PH317		
		.062	.750	2329-N317	2329-T317	2329-PH317		
		.093	.500	2345-N317	2345-T317	2345-PH317		
		.093	.562	2346-N317	2346-T317	2346-PH317		
		.093	.625	2349-N317	2349-T317	2349-PH317		
		.093	.687	2350-N317	2350-T317	2350-PH317		
		.093	.750	2352-N317	2352-T317	2352-PH317		
		3/8 (.375)	.385	.031	.625	2264-N385	2264-T385	2264-PH385
				.031	.687	2265-N385	2265-T385	2265-PH385
				.031	.750	2267-N385	2267-T385	2267-PH385
				.031	1.000	2270-N385	2270-T385	2270-PH385
.047	.625			2297-N385	2297-T385	2297-PH385		
.062	.625			2326-N385	2326-T385	2326-PH385		

†PHENOLIC (PH)

Continued next page

## FLAT INSULATING WASHERS

### SCREW CLEARANCE NOS. 3/8, 7/16, 1/2, 9/16



TOLERANCES	
I. D.	+ .010, - .000
O. D.	+ .015, - .005
L. O.	± .003 for .016 - .032 Thick.
	± .005 for .040 - .047 Thick
	± .006 for .062 Thick.
	± .009 for .093 Thick.
	± .010 for .094 Thick. & over

Continued from previous page

SCREW SIZE	I. D.	L. O.	O. D.	MATERIAL					
				NYLON (N)	TEFLON (T)	PHENOLIC†			
3/8 (.375)	.385	.062	.687	2327-N385	2327-T385	2327-PH385			
			.750	2329-N385	2329-T385	2329-PH385			
			1.000	2332-N385	2332-T385	2332-PH385			
			.625	2349-N385	2349-T385	2349-PH385			
			.687	2350-N385	2350-T385	2350-PH385			
			.750	2352-N385	2352-T385	2352-PH385			
			1.000	2355-N385	2355-T385	2355-PH385			
			.609	2296-N391	2296-T391	2296-PH391			
			.437	2242-N395	2242-T395	2242-PH395			
			.812	2330-N406	2330-T406	2330-PH406			
			7/16 (.437)	.443	.031	.687	2265-N443	2265-T443	2265-PH443
						.750	2267-N443	2267-T443	2267-PH443
.812	2268-N443	2268-T443				2268-PH443			
.875	2269-N443	2269-T443				2269-PH443			
.687	2327-N443	2327-T443				2327-PH443			
.750	2329-N443	2329-T443				2329-PH443			
.812	2330-N443	2330-T443				2330-PH443			
.875	2331-N443	2331-T443				2331-PH443			
.687	2350-N443	2350-T443				2350-PH443			
.750	2352-N443	2352-T443				2352-PH443			
.812	2353-N443	2353-T443				2353-PH443			
.875	2354-N443	2354-T443				2354-PH443			
.750	2267-N473	2267-T473	2267-PH473						

Continued

SCREW SIZE	I. D.	L. O.	O. D.	MATERIAL					
				NYLON (N)	TEFLON (T)	PHENOLIC†			
1/2 (.500)	.515	.031	.750	2267-N515	2267-T515	2267-PH515			
			.875	2269-N515	2269-T515	2269-PH515			
			1.000	2270-N515	2270-T515	2270-PH515			
			.750	2329-N515	2329-T515	2329-PH515			
			.875	2331-N515	2331-T515	2331-PH515			
			1.000	2332-N515	2332-T515	2332-PH515			
			.750	2352-N515	2352-T515	2352-PH515			
			.875	2354-N515	2354-T515	2354-PH515			
			1.000	2355-N515	2355-T515	2355-PH515			
			.730	2369-N525	2369-T525	2369-PH525			
			9/16 (.562)	.569	.031	.750	2267-N569	2267-T569	2267-PH569
						.875	2269-N569	2269-T569	2269-PH569
1.000	2270-N569	2270-T569				2270-PH569			
1.125	2271-N569	2271-T569				2271-PH569			
1.250	2272-N569	2272-T569				2272-PH569			
.750	2329-N569	2329-T569				2329-PH569			
.875	2331-N569	2331-T569				2331-PH569			
1.000	2332-N569	2332-T569				2332-PH569			
1.125	2333-N569	2333-T569				2333-PH569			
1.250	2334-N569	2334-T569				2334-PH569			
.750	2352-N569	2352-T569				2352-PH569			
.875	2354-N569	2354-T569				2354-PH569			
1.000	2355-N569	2355-T569	2355-PH569						
1.125	2356-N569	2356-T569	2356-PH569						
1.250	2357-N569	2357-T569	2357-PH569						
.730	2369-N567	2369-T567	2369-PH567						
.875	2372-N569	2372-T569	2372-PH569						
1.000	2373-N569	2373-T569	2373-PH569						
1.125	2374-N569	2374-T569	2374-PH569						
1.250	2375-N569	2375-T569	2375-PH569						

†PHENOLIC (PH)

5 Pasco Hill Road • Cromwell, CT 06416-1093  
 Phone: 860-828-0847 • Call Toll Free: 800-243-6032 • Fax: 860-828-0381  
 Web Address: <http://www.amatom.com> • E-Mail: [sales@amatom.com](mailto:sales@amatom.com)