

HARDWARE AND FASTENERS

Table of Contents

MACHINE SCREWS	
Stainless Steel, Flat, Cheese,	
Socket and Button	MF 2 - MF 3
Long-Lok® and Nyloc® Flat, Cheese, Socket. . .	MF 4 - MF 6
INTEGRAL SEAL SCREWS	
Slotted Pan Head	MF 7
SET SCREWS	
Slotted and Hex Head, Stainless Steel	MF 8
Brass Soft Tip, Hex Socket	MF 9
Silver Solder Tip, Slotted Head and Hex Socket.	MF 10
Soft Tip, Slotted Head	MF 11 - MF 12
SHOULDER SCREWS	
Stainless Steel, Slotted Head	MF 13 - MF 14
Stainless Steel, Hex Socket Head.	MF 15 - MF 16
PRECISION CAPTIVE SCREWS	
Stainless Steel, Slotted and Hex Socket Head	MF 17
PRECISION JIG BUTTONS	
Stainless Steel.	MF 18
THUMB SCREWS	
Plastic Head, Knurled	MF 19 - MF 20
Stainless Steel, Knurled	MF 21 - MF 22
Stainless Steel, Knurled, Socket Head	MF 23
THUMB NUTS	
Stainless Steel, Knurled.	MF 24
THREADED STUDS	
Stainless Steel, Double Ended	MF 25 - MF 26
HEX NUTS	
Stainless Steel and Molded Nylon.	MF 27
WASHERS	
Nylon and Stainless Steel	MF 28
LOCK WASHERS	
Stainless Steel, External and Internal Tooth	MF 29
THRUST WASHERS	
Stainless Steel, Plastic, Bronze and Carbon Steel	MF 30
Belleville Washers	MF 31
Curved Washers	MF 31
THREAD INSERTS	
Stainless Steel, Free Running and Locking	MF 32
PINS	
Taper, Stainless Steel	MF 33
Roller or Spring Pins, Stainless Steel	MF 34
Cotter Pins, Stainless Steel.	MF 35
DOWEL PINS	
Soft Pins, Stainless Steel	MF 36
Hardened Pins, Stainless Steel.	MF 37
RETAINER RINGS	
External Lug Design, Spring Steel.	MF 38
Internal Lug Design, Spring Steel	MF 38
External Snap On Design	MF 39
External Power Grip Design	MF 39
External Bowed Snap On Design	MF 40
External, Carbon Steel Plated	MF 40
BEARING PRE-LOAD SPRINGS	MF 41
SPACERS	
Inner and Outer Race Shim.	MF 42
Shaft Spacers	MF 43
Assorted Inner Race Shaft Spacers Kit.	MF 43
BEARING SPACERS	MF 44
BALLS	
Hardened Steel	MF 45
SPRINGS	
Compression	MF 46 - MF 47
Extension	MF 47
Torsion	MF 48

F

For inch options, please see our inch catalog.

MACHINE SCREWS

THREAD	STYLE	MATERIAL
M1.6 X 0.35	FLAT, CHEESE, SOCKET AND BUTTON	STAINLESS STEEL DIN 1.4300

STOCK NUMBERS				THREAD Tol=6g	LENGTH A
STYLES					
FLAT	CHEESE	SOCKET	BUTTON		
Y6-M1-A4	Y8-M1-A4	Y9-M1-A4	Y19-M1-A4	M1.6 x 0.35	4.0
Y6-M1-A5	Y8-M1-A5	Y9-M1-A5	Y19-M1-A5		5.0
Y6-M1-A6	Y8-M1-A6	Y9-M1-A6	Y19-M1-A6		6.0
Y6-M1-A8	Y8-M1-A8	Y9-M1-A8	Y19-M1-A8		8.0
Y6-M1-A10	Y8-M1-A10	Y9-M1-A10	Y19-M1-A10		10.0

THREAD	STYLE	MATERIAL
M2 X 0.4	FLAT, CHEESE, SOCKET AND BUTTON	STAINLESS STEEL DIN 1.4300

STOCK NUMBERS				THREAD Tol=6g	LENGTH A
STYLES					
FLAT	CHEESE	SOCKET	BUTTON		
Y6-M2-A3	Y8-M2-A3	Y9-M2-A3	Y19-M2-A3	M2 x 0.4	3.0
Y6-M2-A4	Y8-M2-A4	Y9-M2-A4	Y19-M2-A4		4.0
Y6-M2-A5	Y8-M2-A5	Y9-M2-A5	Y19-M2-A5		5.0
Y6-M2-A6	Y8-M2-A6	Y9-M2-A6	Y19-M2-A6		6.0
Y6-M2-A8	Y8-M2-A8	Y9-M2-A8	Y19-M2-A8		8.0
Y6-M2-A10	Y8-M2-A10	Y9-M2-A10	Y19-M2-A10		10.0
Y6-M2-A13	Y8-M2-A13	Y9-M2-A13	Y19-M2-A13		12.0
Y6-M2-A16	Y8-M2-A16	Y9-M2-A16	Y19-M2-A16		16.0
Y6-M2-A20	Y8-M2-A20	Y9-M2-A20	Y19-M2-A20		20.0

THREAD	STYLE	MATERIAL
M3 X 0.5	FLAT, CHEESE, SOCKET AND BUTTON	STAINLESS STEEL DIN 1.4300

STOCK NUMBERS				THREAD Tol=6g	LENGTH A
STYLES					
FLAT	CHEESE	SOCKET	BUTTON		
Y6-M3-A5	Y8-M3-A5	Y9-M3-A5	Y19-M3-A5	M3 x 0.5	5.0
Y6-M3-A6	Y8-M3-A6	Y9-M3-A6	Y19-M3-A6		6.0
Y6-M3-A8	Y8-M3-A8	Y9-M3-A8	Y19-M3-A8		8.0
Y6-M3-A10	Y8-M3-A10	Y9-M3-A10	Y19-M3-A10		10.0
Y6-M3-A13	Y8-M3-A13	Y9-M3-A13	Y19-M3-A13		12.0
Y6-M3-A16	Y8-M3-A16	Y9-M3-A16	Y19-M3-A16		16.0
Y6-M3-A20	Y8-M3-A20	Y9-M3-A20	Y19-M3-A20		20.0
Y6-M3-A25	Y8-M3-A25	Y9-M3-A25	Y19-M3-A25		25.0
Y6-M3-A30	Y8-M3-A30	Y9-M3-A30	Y19-M3-A30		30.0

THREAD	STYLE	MATERIAL
M4 X 0.7	FLAT, CHEESE, SOCKET AND BUTTON	STAINLESS STEEL DIN 1.4300

STOCK NUMBERS				THREAD Tol=6g	LENGTH A
STYLES					
FLAT	CHEESE	SOCKET	BUTTON		
Y6-M4-A6	Y8-M4-A6	Y9-M4-A6	Y19-M4-A6	M4 x 0.7	6.0
Y6-M4-A8	Y8-M4-A8	Y9-M4-A8	Y19-M4-A8		8.0
Y6-M4-A10	Y8-M4-A10	Y9-M4-A10	Y19-M4-A10		10.0
Y6-M4-A13	Y8-M4-A13	Y9-M4-A13	Y19-M4-A13		12.0
Y6-M4-A16	Y8-M4-A16	Y9-M4-A16	Y19-M4-A16		16.0
Y6-M4-A20	Y8-M4-A20	Y9-M4-A20	Y19-M4-A20		20.0
Y6-M4-A25	Y8-M4-A25	Y9-M4-A25	Y19-M4-A25		25.0
Y6-M4-A30	Y8-M4-A30	Y9-M4-A30	Y19-M4-A30		30.0
Y6-M4-A35	Y8-M4-A35	Y9-M4-A35	Y19-M4-A35		35.0
Y6-M4-A40	Y8-M4-A40	Y9-M4-A40	Y19-M4-A40		40.0

MACHINE SCREWS

THREAD	STYLE	MATERIAL
M5 X 0.8	FLAT, CHEESE, SOCKET AND BUTTON	STAINLESS STEEL DIN 1.4300

STOCK NUMBERS				THREAD Tol=6g	LENGTH A
STYLES					
FLAT	CHEESE	SOCKET	BUTTON		
Y6-M5-A4	Y8-M5-A4	Y9-M5-A4	Y19-M5-A4	M5 x 0.8	4.0
Y6-M5-A8	Y8-M5-A8	Y9-M5-A8	Y19-M5-A8		8.0
Y6-M5-A10	Y8-M5-A10	Y9-M5-A10	Y19-M5-A10		10.0
Y6-M5-A13	Y8-M5-A13	Y9-M5-A13	Y19-M5-A13		12.0
Y6-M5-A16	Y8-M5-A16	Y9-M5-A16	Y19-M5-A16		16.0
Y6-M5-A20	Y8-M5-A20	Y9-M5-A20	Y19-M5-A20		20.0
Y6-M5-A25	Y8-M5-A25	Y9-M5-A25	Y19-M5-A25		25.0
Y6-M5-A30	Y8-M5-A30	Y9-M5-A30	Y19-M5-A30		30.0
Y6-M5-A35	Y8-M5-A35	Y9-M5-A35	Y19-M5-A35		35.0
Y6-M5-A40	Y8-M5-A40	Y9-M5-A40	Y19-M5-A40		40.0
Y6-M5-A45	Y8-M5-A45	Y9-M5-A45	Y19-M5-A45		45.0
Y6-M5-A50	Y8-M5-A50	Y9-M5-A50	Y19-M5-A50		50.0

THREAD	STYLE	MATERIAL
M6 X 1.0	FLAT, CHEESE, SOCKET AND BUTTON	STAINLESS STEEL DIN 1.4300

STOCK NUMBERS				THREAD Tol=6g	LENGTH A
STYLES					
FLAT	CHEESE	SOCKET	BUTTON		
Y6-M6-A8	Y8-M6-A8	Y9-M6-A8	Y19-M6-A8	M6 x 1.0	8.0
Y6-M6-A10	Y8-M6-A10	Y9-M6-A10	Y19-M6-A10		10.0
Y6-M6-A12	Y8-M6-A12	Y9-M6-A12	Y19-M6-A12		12.0
Y6-M6-A16	Y8-M6-A16	Y9-M6-A16	Y19-M6-A16		16.0
Y6-M6-A20	Y8-M6-A20	Y9-M6-A20	Y19-M6-A20		20.0
Y6-M6-A25	Y8-M6-A25	Y9-M6-A25	Y19-M6-A25		25.0
Y6-M6-A30	Y8-M6-A30	Y9-M6-A30	Y19-M6-A30		30.0

THREAD	STYLE	MATERIAL
M8 X 1.25	FLAT, CHEESE, SOCKET AND BUTTON	STAINLESS STEEL DIN 1.4300

STOCK NUMBERS				THREAD Tol=6g	LENGTH A
STYLES					
FLAT	CHEESE	SOCKET	BUTTON		
Y6-M8-A10	Y8-M8-A10	Y9-M8-A10	Y19-M8-A10	M8 X 1.25	10.0
Y6-M8-A13	Y8-M8-A13	Y9-M8-A13	Y19-M8-A13		12.0
Y6-M8-A16	Y8-M8-A16	Y9-M8-A16	Y19-M8-A16		16.0
Y6-M8-A25	Y8-M8-A25	Y9-M8-A25	Y19-M8-A25		25.0
Y6-M8-A30	Y8-M8-A30	Y9-M8-A30	Y19-M8-A30		30.0
Y6-M8-A35	Y8-M8-A35	Y9-M8-A35	Y19-M8-A35		35.0
Y6-M8-A40	Y8-M8-A40	Y9-M8-A40	Y19-M8-A40		40.0
Y6-M8-A45	Y8-M8-A45	Y9-M8-A45	Y19-M8-A45		45.0

THREAD	STYLE	MATERIAL
M10 X 1.5	FLAT, CHEESE, SOCKET AND BUTTON	STAINLESS STEEL DIN 1.4300

STOCK NUMBERS				THREAD Tol=6g	LENGTH A
STYLES					
FLAT	CHEESE	SOCKET	BUTTON		
Y6-M10-A13	Y8-M10-A13	Y9-M10-A13	Y19-M10-A13	M10 X 1.5	12.0
Y6-M10-A16	Y8-M10-A16	Y9-M10-A16	Y19-M10-A16		16.0
Y6-M10-A20	Y8-M10-A20	Y9-M10-A20	Y19-M10-A20		20.0
Y6-M10-A25	Y8-M10-A25	Y9-M10-A25	Y19-M10-A25		25.0
Y6-M10-A30	Y8-M10-A30	Y9-M10-A30	Y19-M10-A30		30.0
Y6-M10-A35	Y8-M10-A35	Y9-M10-A35	Y19-M10-A35		35.0
Y6-M10-A40	Y8-M10-A40	Y9-M10-A40	Y19-M10-A40		40.0

LONG-LOK® AND NYLOC® MACHINE SCREWS

THREAD	STYLE	MATERIAL
M1.6 x 0.35	SELF LOCKING - VIBRATION PROOF FLAT, CHEESE, AND SOCKET	STAINLESS STEEL DIN 1.4300 WITH NYLON STRIP/PELLET

LONG-LOCK®		NYLOC®	THREAD TOL=6g	LENGTH A
FLAT STYLE STOCK NO.	CHEESE STYLE STOCK NO.	SOCKET STYLE* STOCK NO.		
Y6-M1-A4-L	Y8-M1-A4-L	Y9-M1-A4-N	M1.6 x 0.35	4.0
Y6-M1-A5-L	Y8-M1-A5-L	Y9-M1-A5-N		5.0
Y6-M1-A6-L	Y8-M1-A6-L	Y9-M1-A6-N		6.0
Y6-M1-A8-L	Y8-M1-A8-L	Y9-M1-A8-N		8.0
Y6-M1-A10-L	Y8-M1-A10-L	Y9-M1-A10-N		10.0

THREAD	STYLE	MATERIAL
M2 x 0.4	SELF LOCKING - VIBRATION PROOF FLAT, CHEESE, AND SOCKET	STAINLESS STEEL DIN 1.4300 WITH NYLON STRIP/PELLET

LONG-LOCK®		NYLOC®	THREAD TOL=6g	LENGTH A
FLAT STYLE STOCK NO.	CHEESE STYLE STOCK NO.	SOCKET STYLE* STOCK NO.		
Y6-M2-A3-L	Y8-M2-A3-L	Y9-M2-A3-N	M2 x 0.4	3.0
Y6-M2-A4-L	Y8-M2-A4-L	Y9-M2-A4-N		4.0
Y6-M2-A5-L	Y8-M2-A5-L	Y9-M2-A5-N		5.0
Y6-M2-A6-L	Y8-M2-A6-L	Y9-M2-A6-N		6.0
Y6-M2-A8-L	Y8-M2-A8-L	Y9-M2-A8-N		8.0
Y6-M2-A10-L	Y8-M2-A10-L	Y9-M2-A10-N		10.0
Y6-M2-A13-L	Y8-M2-A13-L	Y9-M2-A13-N		12.0
Y6-M2-A16-L	Y8-M2-A16-L	Y9-M2-A16-N		16.0
Y6-M2-A20-L	Y8-M2-A20-L	Y9-M2-A20-N		20.0

THREAD	STYLE	MATERIAL
M3 x 0.5	SELF LOCKING - VIBRATION PROOF FLAT, CHEESE, AND SOCKET	STAINLESS STEEL DIN 1.4300 WITH NYLON STRIP/PELLET

LONG-LOCK®		NYLOC®	THREAD TOL=6g	LENGTH A
FLAT STYLE STOCK NO.	CHEESE STYLE STOCK NO.	SOCKET STYLE* STOCK NO.		
Y6-M3-A5-L	Y8-M3-A5-L	Y9-M3-A5-N	M3 x 0.5	5.0
Y6-M3-A6-L	Y8-M3-A6-L	Y9-M3-A6-N		6.0
Y6-M3-A8-L	Y8-M3-A8-L	Y9-M3-A8-N		8.0
Y6-M3-A10-L	Y8-M3-A10-L	Y9-M3-A10-N		10.0
Y6-M3-A13-L	Y8-M3-A13-L	Y9-M3-A13-N		12.0
Y6-M3-A16-L	Y8-M3-A16-L	Y9-M3-A16-N		16.0
Y6-M3-A20-L	Y8-M3-A20-L	Y9-M3-A20-N		20.0
Y6-M3-A25-L	Y8-M3-A25-L	Y9-M3-A25-N		25.0
Y6-M3-A30-L	Y8-M3-A30-L	Y9-M3-A30-N		30.0

*Y9 Series Socket Cap screws are available only with Nyloc® insert.
Long-Lok® registered Long Lok Corporation. Nyloc® registered Nyloc Corporation.

LONG-LOK® AND NYLOC® MACHINE SCREWS

THREAD	STYLE	MATERIAL
M4 x 0.7	SELF LOCKING - VIBRATION PROOF FLAT, CHEESE, AND SOCKET	STAINLESS STEEL DIN 1.4300 WITH NYLON STRIP/PELLET

LONG-LOCK®		NYLOC®	THREAD TOL=6g	LENGTH A
FLAT STYLE STOCK NO.	CHEESE STYLE STOCK NO.	SOCKET STYLE* STOCK NO.		
Y6-M4-A6-L	Y8-M4-A6-L	Y9-M4-A6-N	M4 X 0.7	6.0
Y6-M4-A8-L	Y8-M4-A8-L	Y9-M4-A8-N		8.0
Y6-M4-A10-L	Y8-M4-A10-L	Y9-M4-A10-N		10.0
Y6-M4-A13-L	Y8-M4-A13-L	Y9-M4-A13-N		12.0
Y6-M4-A16-L	Y8-M4-A16-L	Y9-M4-A16-N		16.0
Y6-M4-A20-L	Y8-M4-A20-L	Y9-M4-A20-N		20.0
Y6-M4-A25-L	Y8-M4-A25-L	Y9-M4-A25-N		25.0
Y6-M4-A30-L	Y8-M4-A30-L	Y9-M4-A30-N		30.0
Y6-M4-A35-L	Y8-M4-A35-L	Y9-M4-A35-N		35.0
Y6-M4-A40-L	Y8-M4-A40-L	Y9-M4-A40-N		40.0

THREAD	STYLE	MATERIAL
M5 X 0.8	SELF LOCKING - VIBRATION PROOF FLAT, CHEESE, AND SOCKET	STAINLESS STEEL DIN 1.4300 WITH NYLON STRIP/PELLET

LONG-LOCK®		NYLOC®	THREAD TOL=6g	LENGTH A
FLAT STYLE STOCK NO.	CHEESE STYLE STOCK NO.	SOCKET STYLE* STOCK NO.		
Y6-M5-A8-L	Y8-M5-A8-L	Y9-M5-A8-N	M5 X 0.8	8.0
Y6-M5-A10-L	Y8-M5-A10-L	Y9-M5-A10-N		10.0
Y6-M5-A13-L	Y8-M5-A13-L	Y9-M5-A13-N		12.0
Y6-M5-A16-L	Y8-M5-A16-L	Y9-M5-A16-N		16.0
Y6-M5-A20-L	Y8-M5-A20-L	Y9-M5-A20-N		20.0
Y6-M5-A25-L	Y8-M5-A25-L	Y9-M5-A25-N		25.0
Y6-M5-A30-L	Y8-M5-A30-L	Y9-M5-A30-N		30.0
Y6-M5-A35-L	Y8-M5-A35-L	Y9-M5-A35-N		35.0
Y6-M5-A40-L	Y8-M5-A40-L	Y9-M5-A40-N		40.0
Y6-M5-A50-L	Y8-M5-A50-L	Y9-M5-A50-N		50.0

THREAD	STYLE	MATERIAL
M6 x 1.0	SELF LOCKING - VIBRATION PROOF FLAT, CHEESE, AND SOCKET	STAINLESS STEEL DIN 1.4300 WITH NYLON STRIP/PELLET

LONG-LOCK®		NYLOC®	THREAD TOL=6g	LENGTH A
FLAT STYLE STOCK NO.	CHEESE STYLE STOCK NO.	SOCKET STYLE* STOCK NO.		
Y6-M6-A8-L	Y8-M6-A8-L	Y9-M6-A8-N	M6 X 1.0	8.0
Y6-M6-A10-L	Y8-M6-A10-L	Y9-M6-A10-N		10.0
Y6-M6-A12-L	Y8-M6-A12-L	Y9-M6-A12-N		12.0
Y6-M6-A16-L	Y8-M6-A16-L	Y9-M6-A16-N		16.0
Y6-M6-A20-L	Y8-M6-A20-L	Y9-M6-A20-N		20.0
Y6-M6-A25-L	Y8-M6-A25-L	Y9-M6-A25-N		25.0
Y6-M6-A30-L	Y8-M6-A30-L	Y9-M6-A30-N		30.0

*Y9 Series Socket Cap screws are available only with Nyloc® insert.

Long-Lok® registered Long Lok Corporation. Nyloc® registered Nyloc Corporation.

LONG-LOK® AND NYLOC® MACHINE SCREWS

THREAD	STYLE	MATERIAL
M8 X 1.25	SELF LOCKING - VIBRATION PROOF FLAT, CHEESE, AND SOCKET	STAINLESS STEEL DIN 1.4300 WITH NYLON STRIP/PELLET

LONG-LOCK®		NYLOC®	THREAD TOL=6g	LENGTH A
FLAT STYLE STOCK NO.	CHEESE STYLE STOCK NO.	SOCKET STYLE* STOCK NO.		
Y6-M8-A10-L	Y8-M8-A10-L	Y9-M8-A10-N	M8 x 1.25	10.0
Y6-M8-A13-L	Y8-M8-A13-L	Y9-M8-A13-N		12.0
Y6-M8-A16-L	Y8-M8-A16-L	Y9-M8-A16-N		16.0
Y6-M8-A20-L	Y8-M8-A20-L	Y9-M8-A20-N		20.0
Y6-M8-A25-L	Y8-M8-A25-L	Y9-M8-A25-N		25.0
Y6-M8-A30-L	Y8-M8-A30-L	Y9-M8-A30-N		30.0
Y6-M8-A35-L	Y8-M8-A35-L	Y9-M8-A35-N		35.0
Y6-M8-A40-L	Y8-M8-A40-L	Y9-M8-A40-N		40.0
Y6-M8-A45-L	Y8-M8-A45-L	Y9-M8-A45-N		45.0

THREAD	STYLE	MATERIAL
M10 X 1.5	SELF LOCKING - VIBRATION PROOF FLAT, CHEESE, AND SOCKET	STAINLESS STEEL DIN 1.4300 WITH NYLON STRIP/PELLET

LONG-LOCK®		NYLOC®	THREAD TOL=6g	LENGTH A
FLAT STYLE STOCK NO.	CHEESE STYLE STOCK NO.	SOCKET STYLE* STOCK NO.		
Y6-M10-A13-L	Y8-M10-A13-L	Y9-M10-A13-N	M10 x 1.5	12.0
Y6-M10-A16-L	Y8-M10-A16-L	Y9-M10-A16-N		16.0
Y6-M10-A20-L	Y8-M10-A20-L	Y9-M10-A20-N		20.0
Y6-M10-A25-L	Y8-M10-A25-L	Y9-M10-A25-N		25.0
Y6-M10-A30-L	Y8-M10-A30-L	Y9-M10-A30-N		30.0
Y6-M10-A35-L	Y8-M10-A35-L	Y9-M10-A35-N		35.0
Y6-M10-A40-L	Y8-M10-A40-L	Y9-M10-A40-N		40.0

*Y9 Series Socket Cap screws are available only with Nyloc® insert.
Long-Lok® registered Long Lok Corporation. Nyloc® registered Nyloc Corporation.

INTEGRAL SEAL SCREWS

THREAD	STYLE	MATERIAL
M2 x 0.4	SLOTTED PAN HEAD	STAINLESS STEEL DIN 1.4300 SCREW WITH SILICONE O RING

STOCK NO.	THREAD SIZE	LENGTH	A	B	CLEARANCE HOLE	
					MIN.	MAX.
Y18-M2-A4	M2 x 0.4	4.00	1.37	4.24	2.31	2.41
Y18-M2-A8		8.00				
Y18-M2-A12		12.00				

THREAD	STYLE	MATERIAL
M3 x 0.5	SLOTTED PAN HEAD	STAINLESS STEEL DIN 1.4300 SCREW WITH SILICONE O RING

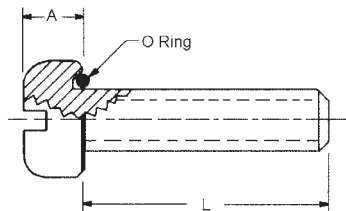
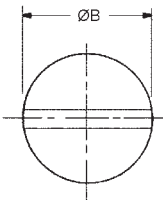
STOCK NO.	THREAD SIZE	LENGTH	A	B	CLEARANCE HOLE	
					MIN.	MAX.
Y18-M3-A6	M3 x 0.5	6.00	1.91	6.22	3.56	3.66
Y18-M3-A12		12.00				
Y18-M3-A20		20.00				

THREAD	STYLE	MATERIAL
M4 x 0.7	SLOTTED PAN HEAD	STAINLESS STEEL DIN 1.4300 SCREW WITH SILICONE O RING

STOCK NO.	THREAD SIZE	LENGTH	A	B	CLEARANCE HOLE	
					MIN.	MAX.
Y18-M4-A6	M4 x 0.7	6.00	2.44	8.18	4.39	4.55
Y18-M4-A12		12.00				
Y18-M4-A20		20.00				

THREAD	STYLE	MATERIAL
M6 x 1.0	SLOTTED PAN HEAD	STAINLESS STEEL DIN 1.4300 SCREW WITH SILICONE O RING

STOCK NO.	THREAD SIZE	LENGTH	A	B	CLEARANCE HOLE	
					MIN.	MAX.
Y18-M6-A12	M6 x 1.0	12.00	3.73	12.50	6.73	6.83
Y18-M6-A20		20.00				
Y18-M6-A25		25.00				

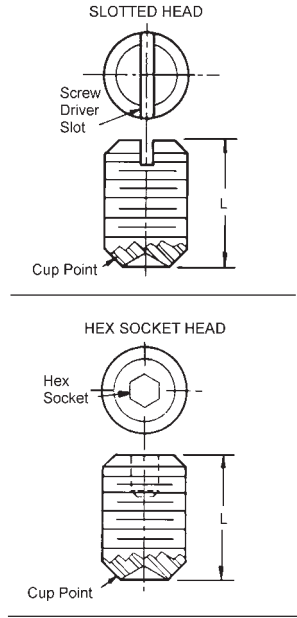


- Reusable
- Clearance holes recommended for maximum sealing
- Maximum temperature range -106°C to +260°C
- Pressure range - up to 4124 N/CM²

SET SCREWS

THREAD	STYLE	MATERIAL
M1.6 x 0.35 to M10 X 1.5	SLOTTED HEAD AND HEX SOCKET	STAINLESS STEEL

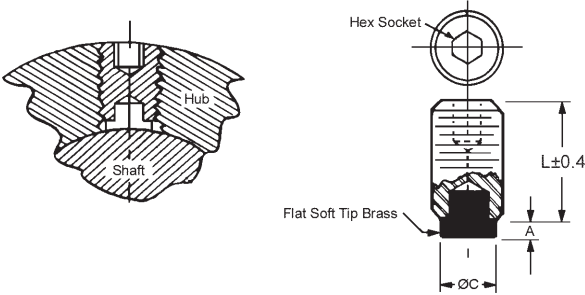
SLOTTED HEAD	HEX SOCKET HEAD	THREAD	L
STAINLESS STEEL	STAINLESS STEEL		
STOCK NO.	STOCK NO.		
SC1M-1	SC2M-1	M1.6 x 0.35	3.0
SC1M-2	SC2M-2		4.0
SC1M-3	SC2M-3		5.0
SC1M-4	SC2M-4	M2 x 0.4	3.0
SC1M-5	SC2M-5		4.0
SC1M-6	SC2M-6		5.0
SC1M-7	SC2M-7		6.0
SC1M-8	SC2M-8	M3 x 0.5	3.0
SC1M-9	SC2M-9		4.0
SC1M-10	SC2M-10		5.0
SC1M-11	SC2M-11		6.0
SC1M-12	SC2M-12	M4 x 0.7	4.0
SC1M-13	SC2M-13		6.0
SC1M-14	SC2M-14		10.0
SC1M-15	SC2M-15		14.0
SC1M-16	SC2M-16	M5 x 0.8	6.0
SC1M-17	SC2M-17		10.0
SC1M-18	SC2M-18		14.0
SC1M-19	SC2M-19		20.0
SC1M-20	SC2M-20	M6 x 1.0	6.0
SC1M-21	SC2M-21		10.0
SC1M-22	SC2M-22		16.0
SC1M-23	SC2M-23		25.0
SC1M-28	SC2M-28	M8 x 1.25	10.0
SC1M-29	SC2M-29		16.0
SC1M-30	SC2M-30		25.0
SC1M-24	SC2M-24	M10 x 1.5	12.0
SC1M-25	SC2M-25		20.0
SC1M-26	SC2M-26		30.0



These parts are sold in packages of 10.

SET SCREWS

THREAD	STYLE	MATERIAL
M3 X 0.5 TO M10 X 1.5	BRASS SOFT TIP HEX SOCKET	STAINLESS STEEL DIN 1.4300 AND HEAT TREATED ALLOY STEEL



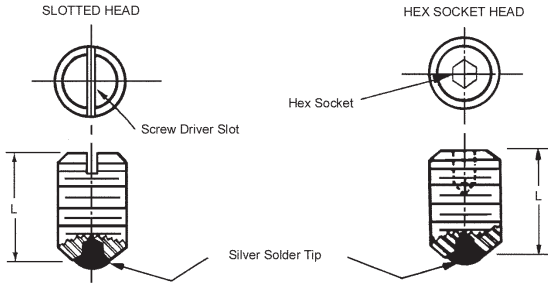
STOCK NO.	THREAD	L	C	A	MATERIAL
SC10M-3 SC10M-4 SC10M-5	M3 x 0.5	3.0 6.0 9.0	1.6	.8	STAINLESS STEEL DIN 1.4300
SC10M-6 SC10M-7 SC10M-8	M4 x 0.7	4.0 6.0 10.0	2.4	1.2	
SC10M-9 SC10M-10 SC10M-11	M5 x 0.8	6.0 10.0 16.0	2.4	1.2	
SC10M-12 SC10M-14 SC10M-15	M6 x 1.0	6.0 10.0 25.0	3.2	1.6	ALLOY STEEL BLACK OXIDE FINISH
SC10M-16 SC10M-17 SC10M-18 SC10M-19	M8 x 1.25	6.0 10.0 16.0 25.0	3.2	1.6	
SC10M-20 SC10M-21 SC10M-22	M10 x 1.5	10.0 16.0 25.0	4.8	2.4	

- Non marring
- Self locking
- Also used as position adjustment screw
- Screws may be used over and over
- Conforms to shaft surface for positive grip

Length is exclusive of brass tip.

SET SCREWS

THREAD	STYLE	MATERIAL
M2 X 0.4 TO M10 X 1.5	SILVER SOLDER TIP SLOTTED HEAD AND HEX SOCKET	STAINLESS STEEL DIN 1.4300



SLOTTED HEAD STOCK NO.	HEX SOCKET HEAD STOCK NO.	THREAD	L
SC5M-4	SC6M-4	M2 x 0.4	3.0
SC5M-5	SC6M-5		4.0
SC5M-6	SC6M-6		5.0
SC5M-7	SC6M-7		6.0
SC5M-8	SC6M-8	M3 x 0.5	3.0
SC5M-9	SC6M-9		4.0
SC5M-10	SC6M-10		5.0
SC5M-11	SC6M-11		6.0
SC5M-12	SC6M-12	M4 x 0.7	4.0
-	SC6M-13		6.0
-	SC6M-14		10.0
-	SC6M-15		14.0
SC5M-16	SC6M-16	M5 x 0.8	6.0
SC5M-17	SC6M-17		10.0
SC5M-18	SC6M-18		14.0
SC5M-19	SC6M-19		20.0
SC5M-20	SC6M-20	M6 x 1.0	6.0
SC5M-21	SC6M-21		10.0
SC5M-22	SC6M-22		16.0
SC5M-23	SC6M-23		25.0
SC5M-28	SC6M-28	M8 x 1.25	10.0
SC5M-29	SC6M-29		16.0
SC5M-30	SC6M-30		25.0
SC5M-24	SC6M-24	M10 x 1.5	12.0
SC5M-25	SC6M-25		20.0
SC5M-26	SC6M-26		30.0

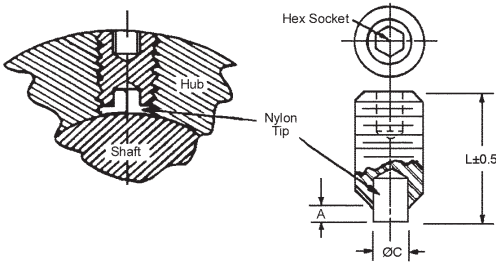
- Also used as position adjustment screw
- Conforms to shaft surface for positive grip
- Non marring
- Self locking

Special sizes are available on request.

Length is exclusive of silver tip.

SET SCREWS

THREAD	STYLE	MATERIAL
M2 X 0.4 TO M10 X 1.5	SOFT TIP SOCKET HEAD	STAINLESS STEEL DIN 1.4300 WITH NYLON TIP

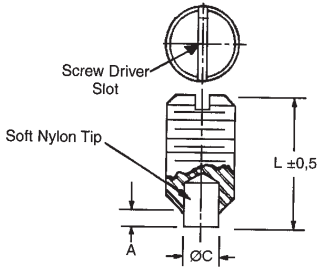


STOCK NO.	THREAD	L	C	A
SC8M-1 SC8M-2 SC8M-3 SC8M-4	M2 X 0.4	3.8 4.8 5.8 6.8	.8	.8
SC8M-5 SC8M-6 SC8M-7 SC8M-8	M3 X 0.5	3.8 4.8 5.8 6.8	1.6	.8
SC8M-9 SC8M-10 SC8M-11 SC8M-12	M4 x 0.7	5.2 7.2 11.2 15.2	2.4	1.2
SC8M-13 SC8M-14 SC8M-15 SC8M-16	M5 x 0.8	7.2 11.2 15.2 21.2	2.4	1.2
SC8M-17 SC8M-18 SC8M-19 SC8M-20	M6 x 1.0	7.6 11.6 17.6 26.6	3.2	1.6
SC8M-24 SC8M-25 SC8M-26 SC8M-27	M8 x 1.25	8.4 12.4 18.4 27.4	4.8	2.4
SC8M-21 SC8M-22 SC8M-23	M10 x 1.5	14.4 22.4 32.4	6.5	3.5

- Self locking
- Extra holding power from full face control
- Will not mar or damage shaft
- Nylon "soft tip" conforms to shape of shaft

SET SCREWS

THREAD	STYLE	MATERIAL
M3 X 0.5 TO M6 X 1.0	SOFT TIP SLOTTED HEAD	STAINLESS STEEL DIN 1.4300 WITH NYLON TIP



STOCK NO.	THREAD	L	C	A
SC7M-1	M3 x 0.5	4.8	1.6	.8
SC7M-2	M4 x 0.7	7.2	2.4	1.2
SC7M-3	M5 x 0.8	11.2	2.4	1.2
SC7M-4 SC7M-6	M6 x 1.0	7.6 20.6	3.2	1.6

- Self locking
- Non marring
- Also used as position adjustment screw
- Screw may be used over and over
- Conforms to shaft surface for positive grip

SHOULDER SCREWS

THREAD	STYLE	MATERIAL
M3 X 0.5	SLOTTED HEAD	STAINLESS STEEL DIN 1.4005 AND STAINLESS STEEL DIN 1.4305

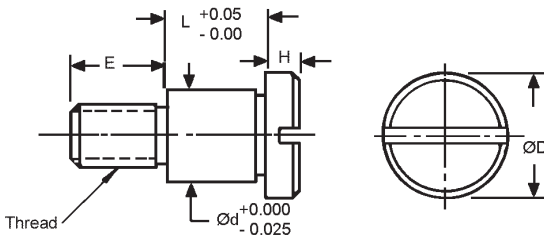
DIN 1.4005 STOCK NO.	DIN 1.4305 STOCK NO.	THREAD	Ød	L	ØD	H	E
PLM-1 PLM-2 PLM-3 PLM-4 PLM-5	PLM-1-3 PLM-2-3 PLM-3-3 PLM-4-3 PLM-5-3	M3 x 0.5	3.987 (4)	4.01 5.01 6.01 8.01 10.01	6	3	4

THREAD	STYLE	MATERIAL
M4 X 0.7	SLOTTED HEAD	STAINLESS STEEL DIN 1.4005 AND STAINLESS STEEL DIN 1.4305

DIN 1.4005 STOCK NO.	DIN 1.4305 STOCK NO.	THREAD	Ød	L	ØD	H	E
PLM-6 PLM-7 PLM-8 PLM-9 PLM-10 PLM-11 PLM-12 PLM-13 PLM-14 PLM-15 PLM-16	PLM-6-3 PLM-7-3 PLM-8-3 PLM-9-3 PLM-10-3 PLM-11-3 PLM-12-3 PLM-13-3 PLM-14-3 PLM-15-3 PLM-16-3	M4 x 0.7	4.987 (5)	4.01 5.01 6.01 8.01 10.01 12.01 14.01 16.01 20.01 25.01 30.01	8	4	5

THREAD	STYLE	MATERIAL
M5 X 0.8	SLOTTED HEAD	STAINLESS STEEL DIN 1.4005 AND STAINLESS STEEL DIN 1.4305

DIN 1.4005 STOCK NO.	DIN 1.4305 STOCK NO.	THREAD	Ød	L	ØD	H	E
PLM-17 PLM-18 PLM-19 PLM-20 PLM-21 PLM-22 PLM-23 PLM-24 PLM-25 PLM-26 PLM-27	PLM-17-3 PLM-18-3 PLM-19-3 PLM-20-3 PLM-21-3 PLM-22-3 PLM-23-3 PLM-24-3 PLM-25-3 PLM-26-3 PLM-27-3	M5 x 0.8	5.987 (6)	4.01 5.01 6.01 8.01 10.01 12.01 14.01 16.01 20.01 25.01 30.01	10	5	6



SHOULDER SCREWS

THREAD	STYLE	MATERIAL
M6 X 1.0	SLOTTED HEAD	STAINLESS STEEL DIN 1.4005 AND STAINLESS STEEL DIN 1.4305

DIN 1.4005 STOCK NO.	DIN 1.4305 STOCK NO.	THREAD	Ød	L	ØD	H	E
PLM-28 PLM-29 PLM-30 PLM-31 PLM-32 PLM-33	PLM-28-3 PLM-29-3 PLM-30-3 PLM-31-3 PLM-32-3 PLM-33-3	M6 x 1.0	7.987 (8)	6.01 8.01 10.01 12.01 16.01 20.01	12	6	11

THREAD	STYLE	MATERIAL
M6 X 1.0	SLOTTED HEAD	STAINLESS STEEL DIN 1.4005 AND STAINLESS STEEL DIN 1.4305

DIN 1.4005 STOCK NO.	DIN 1.4305 STOCK NO.	THREAD	Ød	L	ØD	H	E
PLM-34 PLM-35 PLM-36 PLM-37	PLM-34-3 PLM-35-3 PLM-36-3 PLM-37-3	M6 x 1.0	9.987 (10)	8.01 10.01 12.01 16.01	12	6	11

THREAD	STYLE	MATERIAL
M8 X 1.25	SLOTTED HEAD	STAINLESS STEEL DIN 1.4005 AND STAINLESS STEEL DIN 1.4305

DIN 1.4005 STOCK NO.	DIN 1.4305 STOCK NO.	THREAD	Ød	L	ØD	H	E
PLM-38 PLM-39 PLM-40 PLM-41	PLM-38-3 PLM-39-3 PLM-40-3 PLM-41-3	M8 x 1.25	9.987 (10)	8.01 10.01 12.01 16.01	14	7	12

THREAD	STYLE	MATERIAL
M10 X 1.5	SLOTTED HEAD	STAINLESS STEEL DIN 1.4005 AND STAINLESS STEEL DIN 1.4305

DIN 1.4005 STOCK NO.	DIN 1.4305 STOCK NO.	THREAD	Ød	L	ØD	H	E
PLM-42 PLM-43 PLM-44 PLM-45	PLM-42-3 PLM-43-3 PLM-44-3 PLM-45-3	M10 x 1.5	11.987 (12)	12.01 16.01 20.01 25.01	20	8	16

Drawing on previous page.

SHOULDER SCREWS

THREAD	STYLE	MATERIAL
M3 X 0.5	HEX SOCKET HEAD	STAINLESS STEEL DIN 1.4005 AND STAINLESS STEEL DIN 1.4305

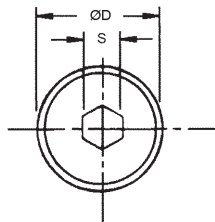
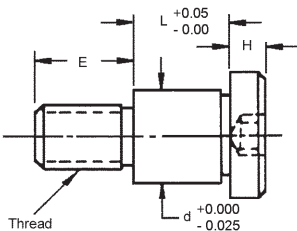
DIN 1.4005 STOCK NO.	DIN 1.4305 STOCK NO.	THREAD	Ød	L	ØD	H	E	S
PZM-1 PZM-2 PZM-3 PZM-4 PZM-5	PZM-1-3 PZM-2-3 PZM-3-3 PZM-4-3 PZM-5-3	M3 x 0.5	3.987 (4)	4.01 5.01 6.01 8.01 10.01	6	3	4	2

THREAD	STYLE	MATERIAL
M4 X 0.7	HEX SOCKET HEAD	STAINLESS STEEL DIN 1.4005 AND STAINLESS STEEL DIN 1.4305

DIN 1.4005 STOCK NO.	DIN 1.4305 STOCK NO.	THREAD	Ød	L	ØD	H	E	S
PZM-6 PZM-7 PZM-8 PZM-9 PZM-10 PZM-11 PZM-12 PZM-13 PZM-14 PZM-15 PZM-16	PZM-6-3 PZM-7-3 PZM-8-3 PZM-9-3 PZM-10-3 PZM-11-3 PZM-12-3 PZM-13-3 PZM-14-3 PZM-15-3 PZM-16-3	M4 x 0.7	4.987 (5)	4.01 5.01 6.01 8.01 10.01 12.01 14.01 16.01 20.01 25.01 30.01	8	4	5	2.5

THREAD	STYLE	MATERIAL
M5 X 0.8	HEX SOCKET HEAD	STAINLESS STEEL DIN 1.4005 AND STAINLESS STEEL DIN 1.4305

DIN 1.4005 STOCK NO.	DIN 1.4305 STOCK NO.	THREAD	Ød	L	ØD	H	E	S
PZM-17 PZM-18 PZM-19 PZM-20 PZM-21 PZM-22 PZM-23 PZM-24 PZM-25 PZM-26 PZM-27	PZM-17-3 PZM-18-3 PZM-19-3 PZM-20-3 PZM-21-3 PZM-22-3 PZM-23-3 PZM-24-3 PZM-25-3 PZM-26-3 PZM-27-3	M5 x 0.8	5.987 (6)	4.01 5.01 6.01 8.01 10.01 12.01 14.01 16.01 20.01 25.01 30.01	10	5	6	3



SHOULDER SCREWS

THREAD	STYLE	MATERIAL
M6 X 1.0	HEX SOCKET HEAD	STAINLESS STEEL DIN 1.4005 AND STAINLESS STEEL DIN 1.4305

DIN 1.4005 STOCK NO.	DIN 1.4305 STOCK NO.	THREAD	Ød	L	ØD	H	E	S
PZM-28 PZM-29 PZM-30 PZM-32 PZM-33	PZM-28-3 PZM-29-3 PZM-31-3 PZM-32-3 PZM-33-3	M6 x 1.0	7.987 (8)	6.01 8.01 12.01 16.01 20.01	12	6	11	4

THREAD	STYLE	MATERIAL
M6 X 1.0	HEX SOCKET HEAD	STAINLESS STEEL DIN 1.4005 AND STAINLESS STEEL DIN 1.4305

DIN 1.4005 STOCK NO.	DIN 1.4305 STOCK NO.	THREAD	Ød	L	ØD	H	E	S
PZM-34 PZM-35 PZM-36 PZM-37	PZM-34-3 PZM-35-3 PZM-36-3 PZM-37-3	M6 x 1.0	9.987 (10)	8.01 10.01 12.01 16.01	12	6	11	4

THREAD	STYLE	MATERIAL
M8 X 1.25	HEX SOCKET HEAD	STAINLESS STEEL DIN 1.4005 AND STAINLESS STEEL DIN 1.4305

DIN 1.4005 STOCK NO.	DIN 1.4305 STOCK NO.	THREAD	Ød	L	ØD	H	E	S
PZM-38 PZM-39 PZM-40 PZM-41	PZM-38-3 PZM-39-3 PZM-40-3 PZM-41-3	M8 x 1.25	9.987 (10)	8.01 10.01 12.01 16.01	14	7	12	5

THREAD	STYLE	MATERIAL
M10 X 1.5	HEX SOCKET HEAD	STAINLESS STEEL DIN 1.4005 AND STAINLESS STEEL DIN 1.4305

DIN 1.4005 STOCK NO.	DIN 1.4305 STOCK NO.	THREAD	Ød	L	ØD	H	E	S
PZM-42 PZM-43 PZM-44 PZM-45	PZM-42-3 PZM-43-3 PZM-44-3 PZM-45-3	M10 x1.5	11.987 (12)	12.01 16.01 20.01 25.01	20	8	16	6

Drawing on previous page.

PRECISION CAPTIVE SCREWS

THREAD	STYLE	MATERIAL
M3 x 0.5 to M5 x 0.8	SLOTTED HEAD	DIN 1.4305 STAINLESS STEEL

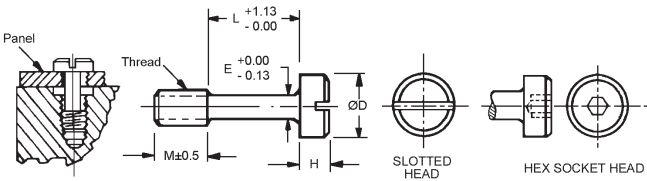
SLOTTED HEAD STOCK NO.	L	M	H	ØE	ØD	THREAD TOL=6g
Z12M-1	6.75	4.5	2.0	2.14	5.2	M3 x 0.5
Z12M-2	8.25	4.5	2.0	2.14	5.2	M3 x 0.5
Z12M-3	9.75	6.0	2.8	2.89	7.0	M4 x 0.7
Z12M-4	11.75	6.0	2.8	2.89	7.0	M4 x 0.7
Z12M-5	12.75	6.0	2.8	2.89	7.0	M4 x 0.7
Z12M-6	13.25	7.5	3.5	3.77	9.0	M5 x 0.8
Z12M-7	14.25	7.5	3.5	3.77	9.0	M5 x 0.8

Specials Upon request.

THREAD	STYLE	MATERIAL
M3 x 0.5 to M5 x 0.8	HEX SOCKET HEAD	DIN 1.4305 STAINLESS STEEL

HEX SOCKET STOCK NO.	L	M	H	ØE	ØD	THREAD TOL=6g
Z12M-1-H	6.75	4.5	2.0	2.14	5.2	M3 x 0.5
Z12M-2-H	8.25	4.5	2.0	2.14	5.2	M3 x 0.5
Z12M-3-H	9.75	6.0	2.8	2.89	7.0	M4 x 0.7
Z12M-4-H	11.75	6.0	2.8	2.89	7.0	M4 x 0.7
Z12M-5-H	12.75	6.0	2.8	2.89	7.0	M4 x 0.7
Z12M-6-H	13.25	7.5	3.5	3.77	9.0	M5 x 0.8
Z12M-7-H	14.25	7.5	3.5	3.77	9.0	M5 x 0.8

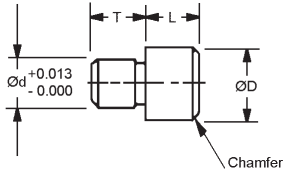
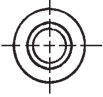
Specials Upon request.



PRECISION JIG BUTTONS

MATERIAL

STAINLESS STEEL DIN 1.4300



STOCK NO.	L	T	$\varnothing D$	$\varnothing d$
PMM-1	6	6	10	5.000
PMM-2	10	6	10	5.000
PMM-3	12	6	10	5.000
PMM-4	6	8	12	6.000
PMM-5	10	8	12	6.000
PMM-6	12	8	12	8.000
PMM-7	19	8	12	8.000
PMM-8	25	8	12	8.000

THUMB SCREWS

THREAD	STYLE	MATERIAL
M3 X 0.5	PLASTIC HEAD, KNURLED	STAINLESS STEEL WITH BLACK PLASTIC HEAD

STOCK NO.	THREAD TOL=6g	ØA	B	ØC	L
PQCM-1	M3 X 0.5	9.6	4.4	8.3	5
PQCM-2					8
PQCM-3					12
PQCM-4					20
PQCM-5					25

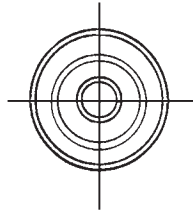
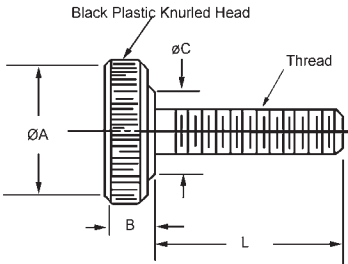
THREAD	STYLE	MATERIAL
M4 X 0.7	PLASTIC HEAD, KNURLED	STAINLESS STEEL WITH BLACK PLASTIC HEAD

STOCK NO.	THREAD TOL=6g	ØA	B	ØC	L
PQCM-6	M4 X 0.7	13.0	5.5	9.8	6
PQCM-7					10
PQCM-8					12
PQCM-9					20
PQCM-10					25

THREAD	STYLE	MATERIAL
M5 X 0.8	PLASTIC HEAD, KNURLED	STAINLESS STEEL WITH BLACK PLASTIC HEAD

STOCK NO.	THREAD TOL=6g	ØA	B	ØC	L
PQCM-11	M5 X 0.8	16.0	6.5	11.5	8
PQCM-12					10
PQCM-13					12
PQCM-14					20
PQCM-15					25

Other sizes, special lengths and non-stainless screws available on request.



THUMB SCREWS

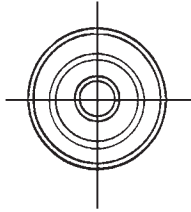
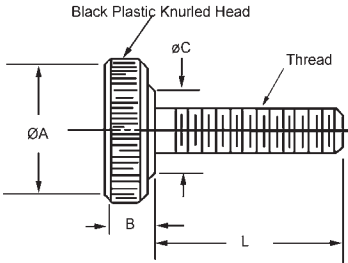
THREAD	STYLE	MATERIAL
M6 X 1.0	PLASTIC HEAD, KNURLED	STAINLESS STEEL DIN 1.4005 WITH BLACK PLASTIC HEAD

STOCK NO.	THREAD	ØA	B	ØC	L
PQCM-16	M6 X 1.0	19.0	7.6	13.0	10
PQCM-17					12
PQCM-18					16
PQCM-18					20
PQCM-20					25

THREAD	STYLE	MATERIAL
M8 X 1.25	PLASTIC HEAD, KNURLED	STAINLESS STEEL DIN 1.4005 WITH BLACK PLASTIC HEAD

STOCK NO.	THREAD	ØA	B	ØC	L
PQCM-21	M8 X 1.25	26.0	9.8	16.0	10
PQCM-22					12
PQCM-23					16
PQCM-24					20
PQCM-25					25

Other sizes, special lengths and non-stainless screws available on request.



THUMB SCREWS

THREAD	STYLE	MATERIAL
M3 X 0.5	STRAIGHT KNURLED	STAINLESS STEEL DIN 1.4005 AND STAINLESS STEEL DIN 1.4305

DIN 1.4005 STOCK NO.	DIN 1.4305 STOCK NO.	THREAD	ØD	L	F	E
PQM-1	PQM-1-3	M3 X 0.5	7	12	8	3
PQM-2	PQM-2-3			25	11	12
PQM-3	PQM-3-3			32	16	12

THREAD	STYLE	MATERIAL
M3 X 0.5	STRAIGHT KNURLED	STAINLESS STEEL DIN 1.4005 AND STAINLESS STEEL DIN 1.4305

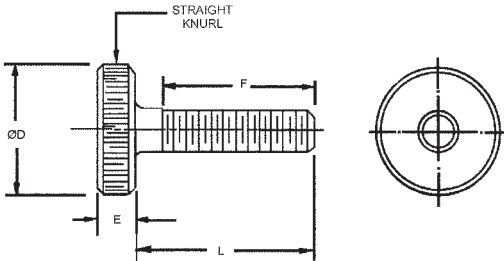
DIN 1.4005 STOCK NO.	DIN 1.4305 STOCK NO.	THREAD	ØD	L	F	E
PQM-4	PQM-4-3	M3 X 0.5	10	12	8	3
PQM-5	PQM-5-3			16	11	

THREAD	STYLE	MATERIAL
M4 X 0.7	STRAIGHT KNURLED	STAINLESS STEEL DIN 1.4005 AND STAINLESS STEEL DIN 1.4305

DIN 1.4005 STOCK NO.	DIN 1.4305 STOCK NO.	THREAD	ØD	L	F	E
PQM-11	PQM-11-3	M4 X 0.7	7	25	11	12
PQM-12	PQM-12-3			32	16	
PQM-13	PQM-13-3			38	24	

THREAD	STYLE	MATERIAL
M4 X 0.7	STRAIGHT KNURLED	STAINLESS STEEL DIN 1.4005 AND STAINLESS STEEL DIN 1.4305

DIN 1.4005 STOCK NO.	DIN 1.4305 STOCK NO.	THREAD	ØD	L	F	E
PQM-14	PQM-14-3	M4 X 0.7	10	12	8	3
PQM-15	PQM-15-3			16	10	



THUMB SCREWS

THREAD	STYLE	MATERIAL
M5 X 0.8	STRAIGHT KNURLED	STAINLESS STEEL DIN 1.4005 AND STAINLESS STEEL DIN 1.4305

DIN 1.4005 STOCK NO.	DIN 1.4305 STOCK NO.	THREAD	ØD	L	F	E
PQM-16 PQM-17 PQM-18 PQM-19	PQM-16-3 PQM-17-3 PQM-18-3 PQM-19-3	M5 X 0.8	10	18 25 30 36	11 16 20 25	5

THREAD	STYLE	MATERIAL
M5 X 0.8	STRAIGHT KNURLED	STAINLESS STEEL DIN 1.4005 AND STAINLESS STEEL DIN 1.4305

DIN 1.4005 STOCK NO.	DIN 1.4305 STOCK NO.	THREAD	ØD	L	F	E
PQM-20 PQM-21 PQM-22 PQM-23	PQM-20-3 PQM-21-3 PQM-22-3 PQM-23-3	M5 X 0.8	12	25 36 25 42	16 20 25 32	5

THREAD	STYLE	MATERIAL
M5 X 0.8	STRAIGHT KNURLED	STAINLESS STEEL DIN 1.4005 AND STAINLESS STEEL DIN 1.4305

DIN 1.4005 STOCK NO.	DIN 1.4305 STOCK NO.	THREAD	ØD	L	F	E
PQM-24 PQM-25 PQM-26 PQM-27	PQM-24-3 PQM-25-3 PQM-26-3 PQM-27-3	M5 X 0.8	19	25 30 36 42	16 20 25 32	5

THREAD	STYLE	MATERIAL
M6 X 1.0	STRAIGHT KNURLED	STAINLESS STEEL DIN 1.4005 AND STAINLESS STEEL DIN 1.4305

DIN 1.4005 STOCK NO.	DIN 1.4305 STOCK NO.	THREAD	ØD	L	F	E
PQM-28 PQM-29 PQM-30 PQM-31	PQM-28-3 PQM-29-3 PQM-30-3 PQM-31-3	M6 X 1.0	19.0	25.0 30.0 36.5 42.5	16 20 25 32	5

THREAD	STYLE	MATERIAL
M6 X 1.0	STRAIGHT KNURLED	STAINLESS STEEL DIN 1.4005 AND STAINLESS STEEL DIN 1.4305

DIN 1.4005 STOCK NO.	DIN 1.4305 STOCK NO.	THREAD	ØD	L	F	E
PQM-32 PQM-33 PQM-34 PQM-35	PQM-32-3 PQM-33-3 PQM-34-3 PQM-35-3	M6 X 1.0	25.5	25.0 30.0 36.5 42.0	16 20 25 32	5

Drawing on previous page.

THUMB SCREWS

THREAD	STYLE	MATERIAL
M3 X 0.5	KNURLED SOCKET HEAD	STAINLESS STEEL DIN 1.4305

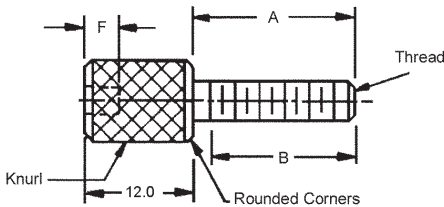
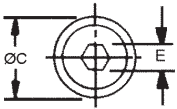
STOCK NO.	THREAD	A	ØC	B	E	F (MIN.)
PQHM-1 PQHM-2	M3 X 0.5	12 19	6	11 16	2	2
PQHM-3 PQHM-4	M3 X 0.5	12 19	8	11 16	2	2
PQHM-5 PQHM-6	M3 X 0.5	10 12	10	8 11	3	3

THREAD	STYLE	MATERIAL
M4 X 0.7	KNURLED SOCKET HEAD	STAINLESS STEEL DIN 1.4305

STOCK NO.	THREAD	A	ØC	B	E	F (MIN.)
PQHM-15 PQHM-16 PQHM-17	M4 X 0.7	12 19 25	6	11 16 20	2	2
PQHM-18 PQHM-19 PQHM-20	M4 X 0.7	19 10 25	8	11 16 20	2	2
PQHM-21 PQHM-22	M4 X 0.7	10 12	10	8 12	3	3

THREAD	STYLE	MATERIAL
M5 X 0.8	KNURLED SOCKET HEAD	STAINLESS STEEL DIN 1.4305

STOCK NO.	THREAD	A	ØC	B	E	F (MIN.)
PQHM-23 PQHM-24 PQHM-25 PQHM-26	M5 X 0.8	12 19 25 32	8	11 16 20 25	2	2
PQHM-27 PQHM-28 PQHM-27 PQHM-29	M5 X 0.8	12 19 25 32	10	11 16 20 25	3	3



THUMB NUTS

THREAD	STYLE	MATERIAL
M3 X 0.5	KNURLED	STAINLESS STEEL DIN 1.4305

STOCK NO.	THREAD	ØA	B	ØC	D	COUNTERBORE	
						DIA.	DEEP
PD1M-1	M3 X 0.5	12.0	6.0	3.0	6.0	-	-
PD1M-2		12.0			12.0	3.2	6.0
PD1M-3		19.0			6.0	-	-
PD1M-4		19.0			12.0	3.2	6.0

THREAD	STYLE	MATERIAL
M4 X 0.7	KNURLED	STAINLESS STEEL DIN 1.4305

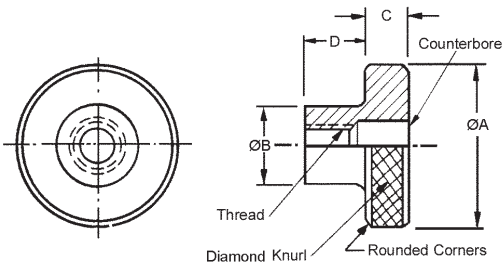
STOCK NO.	THREAD	ØA	B	ØC	D	COUNTERBORE	
						DIA.	DEEP
PD1M-9	M4 X 0.7	12.0	8.0	3.0	6.0	-	-
PD1M-10		12.0			12.0	4.2	6.0
PD1M-11		19.0			6.0	-	-
PD1M-12		19.0			12.0	4.2	6.0

THREAD	STYLE	MATERIAL
M5 X 0.8	KNURLED	STAINLESS STEEL DIN 1.4305

STOCK NO.	THREAD	ØA	B	ØC	D	COUNTERBORE	
						DIA.	DEEP
PD1M-13	M5 X 0.8	12.0	10.0	5.0	6.0	-	-
PD1M-14		12.0			12.0	5.3	7.5
PD1M-15		25.5			6.0	-	-
PD1M-16		25.5			12.0	5.3	7.5

THREAD	STYLE	MATERIAL
M6 X 1.0	KNURLED	STAINLESS STEEL DIN 1.4305

STOCK NO.	THREAD	ØA	B	ØC	D	COUNTERBORE	
						DIA.	DEEP
PD1M-17	M6 X 1.0	19.0	12.5	6.5	6.0	-	-
PD1M-18		19.0			12.0	6.4	9.0
PD1M-19		25.5			6.0	-	-
PD1M-20		25.5			12.0	6.4	9.0
PD1M-21		25.5			19.0	6.4	15.0



THREADED STUDS

THREAD	STYLE	MATERIAL
M3.5 X 0.6	DOUBLE ENDED	STAINLESS STEEL DIN 1.4305

STOCK NO.	L	THREAD SIZE BOTH ENDS	D	d
PVM-1	25.5	M3.5 X 0.6	6.0	12.0
PVM-2	32.0			15.0
PVM-3	38.0			19.0
PVM-4	44.5			19.0
PVM-5	50.0			19.0

THREAD	STYLE	MATERIAL
M4 X 0.7	DOUBLE ENDED	STAINLESS STEEL DIN 1.4305

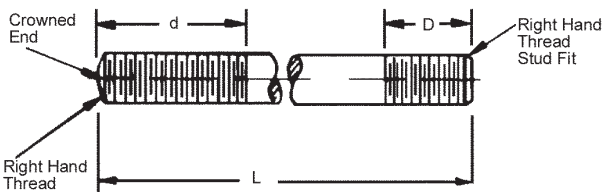
STOCK NO.	L	THREAD SIZE BOTH ENDS	D	d
PVM-6	25.5	M4 X 0.7	6.0	12.0
PVM-7	32.0			15.0
PVM-8	38.0			19.0
PVM-9	44.5			19.0
PVM-10	50.0			19.0

THREAD	STYLE	MATERIAL
M5 X 0.8	DOUBLE ENDED	STAINLESS STEEL DIN 1.4305

STOCK NO.	L	THREAD SIZE BOTH ENDS	D	d
PVM-11	25.5	M5 X 0.8	6.0	12.0
PVM-12	32.0			15.0
PVM-13	38.0			19.0
PVM-14	44.5			19.0
PVM-15	50.0			19.0

THREAD	STYLE	MATERIAL
M6 X 1.0	DOUBLE ENDED	STAINLESS STEEL DIN 1.4305

STOCK NO.	L	THREAD SIZE BOTH ENDS	D	d
PVM-16	37.0	M6 X 1.0	7.0	15.0
PVM-17	38.0			15.0
PVM-18	44.5			19.0
PVM-19	50.0			19.0
PVM-20	63.5			19.0
PVM-21	76.0			25.0



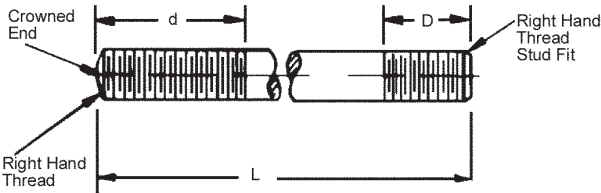
THREADED STUDS

THREAD	STYLE	MATERIAL
M8 X 1.25	DOUBLE ENDED	STAINLESS STEEL DIN 1.4305

STOCK NO.	L	THREAD SIZE BOTH ENDS	D	d
PVM-22	38.0	M8 X 1.25	8.0	15.0
PVM-23	50.0			25.5
PVM-24	63.5			32.0
PVM-25	76.0			35.0
PVM-26	88.0			38.0
PVM-27	100.0			38.0

THREAD	STYLE	MATERIAL
M10 X 1.5	DOUBLE ENDED	STAINLESS STEEL DIN 1.4305

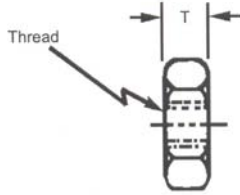
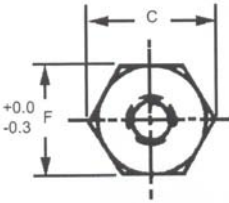
STOCK NO.	L	THREAD SIZE BOTH ENDS	D	d
PVM-28	42.0	M10 X 1.5	8.0	19.0
PVM-29	50.0			25.4
PVM-30	63.5			32.0
PVM-31	76.0			35.0
PVM-32	89.0			38.0
PVM-33	102.0			38.0



HEX NUTS

MATERIAL

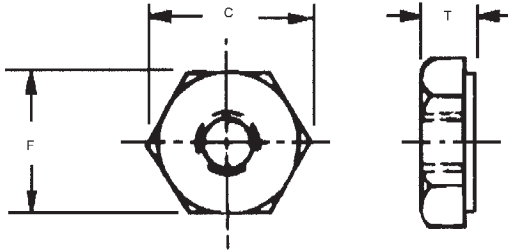
STAINLESS STEEL DIN 1.4305



STOCK NO.	THREAD SIZE	T (MAX.)	C (Ref.)	F
Y5-M1	M1.6 X 0.35	1.3	3.5	3.2
Y5-M2	M2 X 0.4	1.6	4.4	4.0
Y5-M3	M3 X 0.5	2.4	6.0	5.5
Y5-M4	M4 X 0.7	3.2	7.7	7.0
Y5-M5	M5 X 0.8	4.0	8.8	8.0
Y5-M6	M6 X 1.0	5.0	11.1	10.0
Y5-M8	M8 X 1.25	6.5	14.4	13.0
Y5-M10	M10 X 1.5	8.0	18.9	17.0

MATERIAL

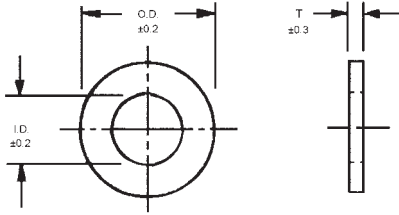
MOLDED NYLON



STOCK NO.	THREAD SIZE	T (MAX.)	C (Ref.)	F
Z5-N-M2	M2 X 0.4	1.2	3.9	3.9
Z5-N-M3	M3 X 0.5	2.2	5.4	5.4
Z5-N-M4	M4 X 0.7	3.0	6.9	6.9
Z5-N-M5	M5 X 0.8	4.3	7.9	7.9
Z5-N-M6	M6 X 1.0	5.4	9.9	9.9
Z5-N-M8	M8 X 1.25	6.4	12.9	12.9
Z5-N-M10	M10 X 1.5	9.8	14.8	16.9

WASHERS

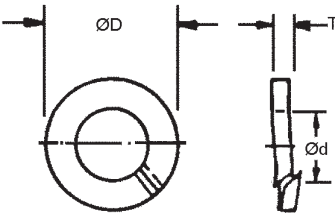
SCREW SIZE	TYPE	MATERIAL
M2 TO M10	PLAIN	MOLDED NYLON



STOCK NO.	SCREW SIZE	O.D.	I.D.	T
Z4-N-M2	M2	5.0	2.2	0.8
Z4-N-M3	M3	8.0	3.2	0.8
Z4-N-M4	M4	9.0	4.3	0.8
Z4-N-M5	M5	11.0	5.3	1.0
Z4-N-M6	M6	12.0	6.4	1.5
Z4-N-M8	M8	18.0	8.4	2.0
Z4-N-M10	M10	20.0	10.5	2.5

SOLD IN PACKAGES OF 10.

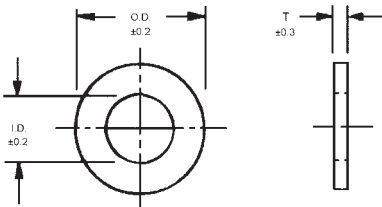
SCREW SIZE	TYPE	MATERIAL
M2 TO M10	SPLIT LOCK	STAINLESS STEEL DIN 1.4300



STOCK NO.	THREAD	ØD Max	Ød	TOL	T	TOL
Z3-M2	M2	4.4	2.1	+0.3	0.5	±0.1
Z3-M3	M3	6.2	3.1	+0.3	0.8	±0.1
Z3-M4	M4	7.6	4.1	+0.3	0.9	±0.1
Z3-M5	M5	9.2	5.1	+0.3	1.2	±0.1
Z3-M6	M6	11.8	6.1	+0.4	1.6	±0.1
Z3-M8	M8	14.8	8.1	+0.4	2.0	±0.1
Z3-M10	M10	18.1	10.2	+0.5	2.2	±0.15

SOLD IN PACKAGES OF 10.

SCREW SIZE	TYPE	MATERIAL
M2 TO M10	PLAIN	STAINLESS STEEL DIN 1.4300

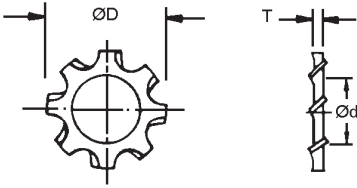


STOCK NO.	THREAD	ØD Max	Ød	TOL	T	TOL
Z4-M2	M2	5	2.2	+0.14	0.30	±0.05
Z4-M3	M3	7	3.2	+0.18	0.50	±0.05
Z4-M4	M4	9	4.3	+0.18	0.8	±0.1
Z4-M5	M5	10	5.3	+0.18	1.0	±0.1
Z4-M6	M6	12.5	6.4	+0.22	1.6	±0.2
Z4-M8	M8	17	8.4	+0.22	1.6	±0.2
Z4-M10	M10	21	10.5	+0.22	2.0	±0.2

SOLD IN PACKAGES OF 10.

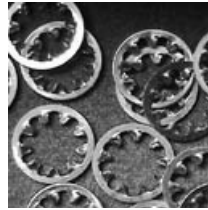
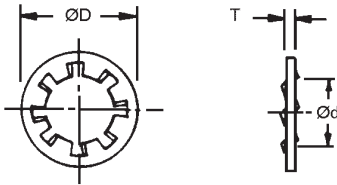
LOCK WASHERS

SCREW SIZE	STYLE	MATERIAL
M2 TO M10	EXTERNAL TOOTH	STAINLESS STEEL DIN 1.4006



STOCK NO.	THREAD	ØD	Ød	TOL	T	TOL
Z1-M2	M2	4.4	2.1	+0.3	0.5	±0.1
Z1-M3	M3	6.2	3.1	+0.3	0.8	±0.1
Z1-M4	M4	7.6	4.1	+0.3	0.9	±0.1
Z1-M5	M5	9.2	5.1	+0.3	1.2	±0.1
Z1-M6	M6	11.8	6.1	+0.4	1.6	±0.1
Z1-M8	M8	14.8	8.1	+0.4	2.0	±0.1
Z1-M10	M10	18.1	10.2	+0.5	2.2	±0.15

SCREW SIZE	STYLE	MATERIAL
M2 TO M10	INTERNAL TOOTH	STAINLESS STEEL DIN 1.4006



STOCK NO.	SCREW SIZE	ØD h14	Ød h13	F
Z2-M2	M2	4.5	2.2	0.3
Z2-M3	M3	6.0	3.2	0.4
Z2-M4	M4	8.0	4.3	0.5
Z2-M5	M5	10.0	5.3	0.6
Z2-M6	M6	11.0	6.4	0.7
Z2-M8	M8	15.0	8.4	0.8
Z2-M10	M10	18.0	10.5	0.9

THRUST WASHERS

SHAFT SIZE	TYPE	MATERIAL
5 TO 25	HARDENED GROUND	STAINLESS STEEL DIN 1.4006 OR CARBON STEEL

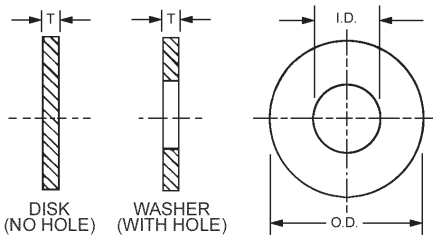
STAINLESS STEEL STOCK NO.	CARBON STEEL STOCK NO.	INSIDE DIA. +0.30 -0.00	OUTSIDE DIA. +0.00 -0.31	T	Tolerance	SHAFT SIZE
CD1M-2-SS	CD1M-2	5.00	12.00	1.27	±0.05	5
CD1M-3-SS	CD1M-3	6.00	14.00			6
CD1M-4-SS	CD1M-4	7.00	17.00			7
CD1M-5-SS	CD1M-5	8.00	16.00			8
CD1M-6-SS	CD1M-6	10.00	21.00	1.57	+0.06 / -0.05	10
CD1M-7-SS	CD1M-7	12.00	24.00			12
CD1M-8-SS	CD1M-8	16.00	28.00	2.36	±0.08	16
CD1M-9-SS	CD1M-9	19.00	32.00			19
CD1M-10-SS	CD1M-10	25.00	41.00	3.18	+0.12 / -0.13	25

SHAFT SIZE	TYPE	MATERIAL
3 TO 25	PLASTIC	NYLON AND TEFLON

NYLON STOCK NO.	TEFLON® STOCK NO.	I.D. +0.13 -0.00	O.D. +0.00 -0.13	T ±.05	SHAFT SIZE
CD7M-1	CD8M-1	3.00	9	2.5	3
CD7M-2	CD8M-2	4.00	12	2.5	4
CD7M-3	CD8M-3	5.00	13	2.5	5
CD7M-4	CD8M-4	6.00	15	2.5	6
CD7M-5	CD8M-5	8.00	19	2.5	8
CD7M-6	CD8M-6	10.00	24	2.5	10
CD7M-7	CD8M-7	12.00	30	2.5	12
CD7M-8	CD8M-8	20.00	40	2.5	20
CD7M-9	CD8M-9	25.00	40	2.5	25

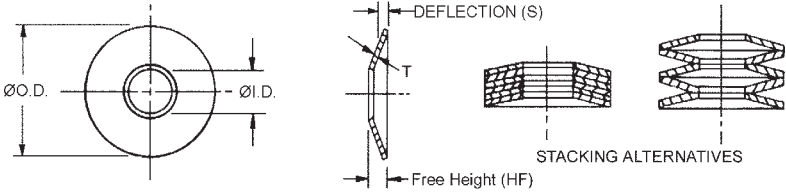
SHAFT SIZE	TYPE	MATERIAL
3 TO 11	LUBRICATING	BRONZE OIL-IMPREGNATED

STOCK NO.	I.D. +0.1 -0.0	O.D. +0.00 -0.1	T ±0.05	SHAFT SIZE
CD3M-1	3.1	8.9	1.5	3
CD3M-2	4.1	11.9	1.5	4
CD3M-3	6.1	14.9	1.5	6
CD3M-4	8.1	18.9	2.2	8
CD3M-5	10.1	23.9	3.0	10
CD3M-6	11.1	28.9	4.7	11



WASHERS

STYLE	SHAFT SIZE	OUTSIDE DIAMETER	MATERIALS
BELLEVILLE	4 TO 12	8 TO 25	1095 CARBON STEEL

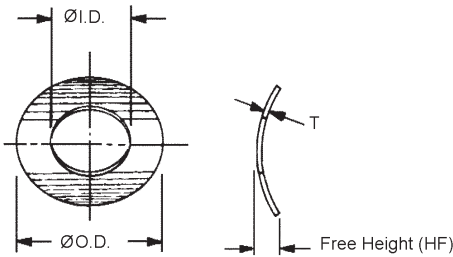


STOCK NO.	Ø.O.D.	Ø.I.D.	T	HF (Ref.)	SPRING LOAD (N) AT S=0.25HF
STM-1	8	4.2	0.2	0.45	21
STM-2			0.3	0.55	52
STM-3			0.4	0.6	78
STM-4	10	5.2	0.25	0.55	30
STM-5			0.4	0.7	88
STM-6			0.5	0.75	122
STM-7	12.5	6.2	0.35	0.8	84
STM-8			0.50	0.85	120
STM-9			0.7	1.0	239
STM-10	16	8.2	0.4	0.9	84
STM-11			0.6	1.05	172
STM-12			0.9	1.25	363
STM-13	20	10.2	0.5	1.15	141
STM-14			0.8	1.35	304
STM-15			1.1	1.55	548
STM-16	25	12.2	0.7	1.6	331
STM-17			0.9	1.6	367
STM-18			1.5	2.05	1040



Sold in packages of 10.

STYLE	SHAFT SIZE	OUTSIDE DIAMETER	MATERIALS
CURVED	3 TO 10	6 TO 18	1095 CARBON STEEL

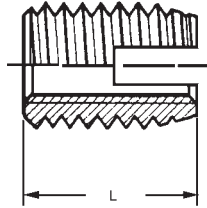
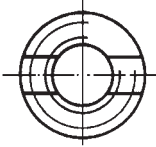


STOCK NO.	Ø.I.D. (H14)	Ø.O.D. (js16)	HF (MIN.)	T
SUM-1	3.2	6.0	0.65	0.4
SUM-2	4.3	8.0	0.8	0.5
SUM-3	5.3	10.0	0.9	0.5
SUM-4	6.4	11.0	1.1	0.5
SUM-5	8.4	15.0	1.7	0.5
SUM-6	10.5	18.0	2.0	0.8

I.D. Based in long axis providing free fit on normal screw.
Sold in packages of 10.

THREAD INSERTS

THREAD SIZE	TYPE	MATERIAL
M3 X 0.5 TO M8 X 1.25	SELF TAPING	STAINLESS STEEL DIN 1.4305

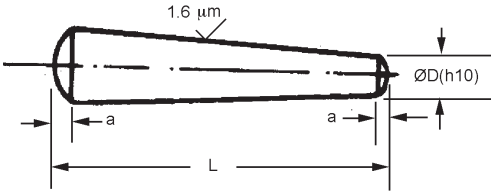


LOCKING			INSTALLATION DATA			
STOCK NUMBER	THREAD SIZE	LENGTH L ±0.3	RETAINING HOLE DIAMETER		MIN. HOLE DEPTH	INSTAL. TOOL PART NO
			SOFT PLASTICS HARD WOOD	ALUMINUM HARD BRITTLE PLASTICS		
Y23-M3-4	M3 x 0.5	6	4.5 To 4.6	4.6 To 4.7	8	Y15-PM3
Y23-M4-5	M4 x 0.7	8	5.8 To 5.9	6.0 To 6.1	10	Y15-PM4
Y23-M5-8	M5 x 0.8	10	7.1 To 7.2	7.3 To 7.5	13	Y15-PM5
Y23-M6-10	M6 x 1.0	14	8.1 To 8.2	8.3 To 8.5	15	Y15-PM6
Y23-M8-12	M8 x 1.25	15	10.6 To 10.8	10.9 To 11.2	18	Y15-PM8

- Increase holding power
- Positive locking power
- Eliminates stripping, seizing and corrosion
- Long life without thread wear
- Save space, weight and material
- No more lock nuts

PINS

TYPE	MATERIALS
TAPER	STAINLESS STEEL DIN 1.4305



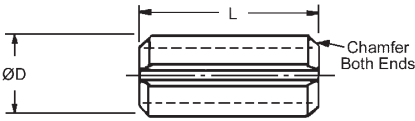
STOCK NO.	ØO.D.	L	a	Ref. SHAFT SIZE
CP3M-1	1.00	8.00	0.12	3.00 TO 4.00
CP3M-2		10.00		
CP3M-3		12.00		
CP3M-4	1.50	10.00	0.20	5.00
CP3M-5		12.00		
CP3M-6		14.00		
CP3M-7		16.00		
CP3M-8	20.00			
CP3M-9	2.00	12.00	0.25	6.00 TO 8.00
CP3M-10		14.00		
CP3M-11		16.00		
CP3M-13		20.00		
CP3M-14	3.00	14.00	0.40	10.00
CP3M-16		20.00		
CP3M-17		25.00		
CP3M-18	4.00	16.00	0.50	12.00
CP3M-19		20.00		
CP3M-20		25.00		
CP3M-21		30.00		

Sold in packages of 10.

Taper 1:50

PINS

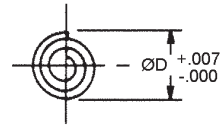
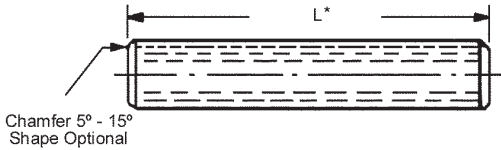
TYPE	MATERIALS
ROLL OR SPRING	STAINLESS STEEL DIN 1.4305



STOCK NO.	O.D. MIN.	L	DRILL SIZE	REF. SHAFT DIA.
CP5M-1	1.7	6	1.5	4.00 TO 5.00
CP5M-2		8		
CP5M-3		10		
CP5M-4		12		
CP5M-5		14		
CP5M-6		16		
CP5M-7	2.3	10	2.0	6.00
CP5M-8		12		
CP5M-9		14		
CP5M-10		16		
CP5M-11	18			
CP5M-12	3.3	10	3.0	8.00 TO 10.00
CP5M-13		12		
CP5M-14		14		
CP5M-15		16		
CP5M-16		18		
CP5M-17	20			

Sold in packages of 10.

TYPE	MATERIALS
ROLL OR SPRING STANDARD DUTY	STAINLESS STEEL DIN 1.4305



STOCK NO.	O.D. MIN.	L*	DRILL SIZE	(REF.) SHAFT
CP6M-6	1.0	4	1.0	3.00
CP6M-7		6		
CP6M-8		8		
CP6M-9		10		
CP6M-10		14		
CP6M-18	1.5	6	1.5	3.00 AND 4.00
CP6M-19		10		
CP6M-24	2.0	4	2.0	5.00 AND 6.00
CP6M-25		10		
CP6M-26		14		
CP6M-27		20		
CP6M-31	2.5	6	2.5	7.00
CP6M-32		12		
CP6M-33		18		
CP6M-38	3.0	12	3.0	8.00 THROUGH 10.00
CP6M-39		20		
CP6M-40		30		
CP6M-43	4.0	8	4.0	11.00 AND 12.00
CP6M-44		12		
CP6M-45		20		
CP6M-46		30		
CP6M-47		40		
CP6M-48*		50		

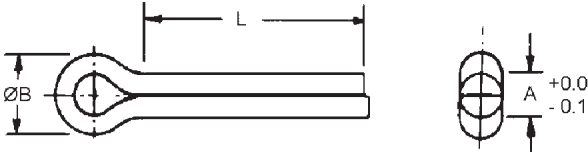


* Length tolerance of plus 0.5 for all lengths through 10mm Plus 1.0 for all lengths over 10mm through 50mm.

Sold in packages of 10.

PINS

TYPE	MATERIALS
COTTER	STAINLESS STEEL DIN 1.4310

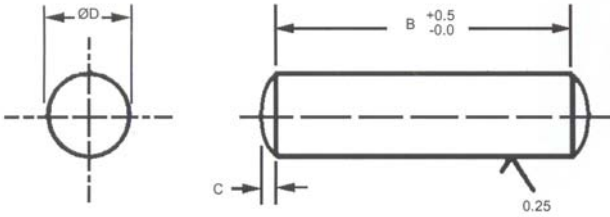


SOLD IN PACKAGES OF 10.

STOCK NO.	A	ØB MIN.	L	HOLE SIZE
CP1-31 CP1-32 CP1-1 CP1-34	0.8	2	10 13 19 25	1.2
CP1-2	1.2	2	25	1.6
CP1-35 CP1-36 CP1-37 CP1-3 CP1-9	1.5	3	10 13 19 25 38	2.0
CP1-4	1.9	4	32	2.4
CP1-10 CP1-11 CP1-12 CP1-5	2.3	5	13 19 25 38	2.8
CP1-14 CP1-15 CP1-16 CP1-17 CP1-7	3.0	6	13 19 25 38 51	3.6
CP1-19 CP1-20 CP1-21 CP1-22	3.8	6	19 25 38 51	4.4
CP1-23 CP1-24 CP1-25 CP1-26	4.5	10	25 38 51 64	5.2
CP1-27 CP1-28 CP1-29	5.7	13	38 51 64	6.8

PINS

TYPE	DIAMETER SIZE	MATERIALS
DOWEL SOFT PINS	1 TO 12	STAINLESS STEEL DIN 1.4305 ROCKWELL B75-95

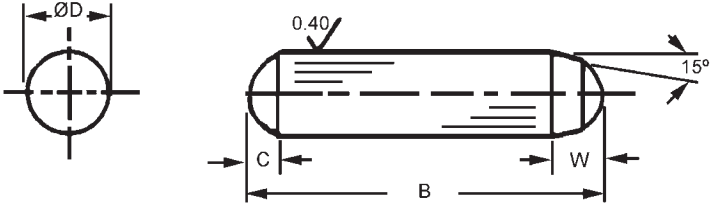


B	$\text{ØD}=1$ $\begin{matrix} +0.009 \\ +0.002 \end{matrix}$	$\text{ØD}=1.5$ $\begin{matrix} +0.009 \\ +0.002 \end{matrix}$	$\text{ØD}=2$ $\begin{matrix} +0.009 \\ +0.002 \end{matrix}$	$\text{ØD}=2.5$ $\begin{matrix} +0.009 \\ +0.002 \end{matrix}$
	C=0.15	C=0.23	C=0.30	C=0.40
	STOCK NO.	STOCK NO.	STOCK NO.	STOCK NO.
3	D10M-1	—	—	—
4	D10M-2	D15M-2	D20M-2	D25M-2
5	D10M-3	D15M-3	D20M-3	D25M-3
6	D10M-4	D15M-4	D20M-4	D25M-4
8	D10M-5	D15M-5	D20M-5	D25M-5
10	D10M-6	D15M-6	D20M-6	D25M-6
12	D10M-7	D15M-7	D20M-7	D25M-7
14	D10M-8	D15M-8	D20M-8	D25M-8
16	D10M-9	D15M-9	D20M-9	D25M-9
18	D10M-10	D15M-10	D20M-10	D25M-10
20	D10M-11	D15M-11	D20M-11	D25M-11
24	D10M-12	D15M-12	D20M-12	D25M-12
B	$\text{ØD}=3$ $\begin{matrix} +0.012 \\ +0.004 \end{matrix}$	$\text{ØD}=4$ $\begin{matrix} +0.012 \\ +0.004 \end{matrix}$	$\text{ØD}=5$ $\begin{matrix} +0.012 \\ +0.004 \end{matrix}$	$\text{ØD}=6$ $\begin{matrix} +0.015 \\ +0.006 \end{matrix}$
	C=0.45	C=0.63	C=0.75	C=0.90
	STOCK NO.	STOCK NO.	STOCK NO.	STOCK NO.
4	D30M-1	—	—	—
5	D30M-2	D40M-2	D50M-2	—
6	D30M-3	D40M-3	D50M-3	D60M-3
8	D30M-4	D40M-4	D50M-4	D60M-4
10	D30M-5	D40M-5	D50M-5	D60M-5
12	D30M-6	D40M-6	D50M-6	D60M-6
14	D30M-7	D40M-7	D50M-7	D60M-7
16	D30M-8	D40M-8	D50M-8	D60M-8
18	D30M-9	D40M-9	D50M-9	D60M-9
20	D30M-10	D40M-10	D50M-10	D60M-10
24	D30M-11	D40M-11	D50M-11	D60M-11
28	D30M-12	D40M-12	D50M-12	D60M-12
B	$\text{ØD}=8$ $\begin{matrix} +0.015 \\ +0.006 \end{matrix}$	$\text{ØD}=10$ $\begin{matrix} +0.015 \\ +0.006 \end{matrix}$	$\text{ØD}=12$ $\begin{matrix} +0.018 \\ +0.007 \end{matrix}$	
	C=1.20	C=1.50	C=1.80	
	STOCK NO.	STOCK NO.	STOCK NO.	
12	D80M-1	—	—	
14	D80M-2	D100M-2	—	
16	D80M-3	D100M-3	—	
18	D80M-4	D100M-4	D120M-4	
20	D80M-5	D100M-5	D120M-5	
24	D80M-6	D100M-6	D120M-6	
28	D80M-7	D100M-7	D120M-7	
32	D80M-8	D100M-8	D120M-8	
36	—	D100M-9	D120M-9	
40	—	D100M-10	D120M-10	
50	—	—	D120M-11	

SOLD IN PACKAGES OF 10.

PINS

TYPE	DIAMETER SIZE	MATERIALS
HARDENED DOWEL	2 TO 10	STAINLESS STEEL DIN 1.4005 ROCKWELL B36-42

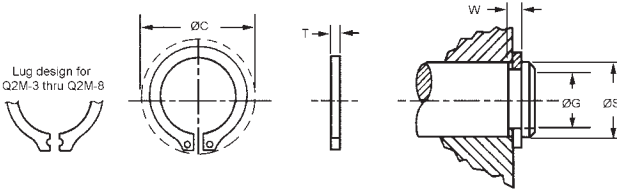


B	$\text{ØD} = 2.009 - .007$	$\text{ØD} = 2.509 - .007$	$\text{ØD} = 3.012 - .007$	$\text{ØD} = 4.012 - .008$
	W = 0.78 C = 0.30	W = 0.95 C = 0.40	W = 1.10 C = 0.45	W = 1.40 C = 0.60
	STOCK NO.	STOCK NO.	STOCK NO.	STOCK NO.
5	D40-1	D41-1	-	-
6	D40-2	D41-2	D42-2	-
8	D40-3	D41-3	D42-3	-
10	D40-4	D41-4	D42-4	D43-4
12	D40-5	D41-5	D42-5	D43-5
14	D40-6	D41-6	D42-6	D43-6
16	D40-7	D41-7	D42-7	D43-7
20	D40-8	D41-8	D42-8	D43-8
24	D40-9	D41-9	D42-9	D43-9
B	$\text{ØD} = 5.012 - .008$	$\text{ØD} = 6.015 - .009$	$\text{ØD} = 8.015 - .009$	$\text{ØD} = 10.018 - .011$
	W = 1.70 C = 0.75	W = 2.10 C = 0.90	W = 2.50 C = 1.20	W = 3.00 C = 1.50
	STOCK NO.	STOCK NO.	STOCK NO.	STOCK NO.
10	D44-4	-	-	-
12	D44-5	D45-5	-	-
16	D44-7	D45-7	D46-7	-
20	D44-8	D45-8	D46-8	D47-8
24	D44-9	D45-9	D46-9	D47-9
30	D44-10	D45-10	D46-10	D47-10
40	-	D45-11	D46-11	D47-11

SOLD IN PACKAGES OF 10.

RETAINER RINGS

TYPE	MATERIALS
EXTERNAL LUG DESIGN	SPRING STEEL



Lug design for Q2M-3 thru Q2M-8



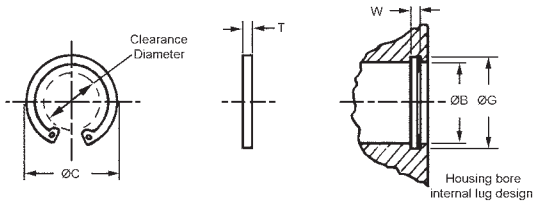
Retainer Ring Pliers. Order separately.

STOCK NO.	ØG GROOVE DIA.	ØS SHAFT SIZE	GROOVE WIDTH W (H13)	T	ØC CLEARANCE DIAMETER	PLIERS STOCK NO.
Q2M-3	2.80 - 0.04	3.00	0.50	0.40	7.0	S11-12P
Q2M-4	3.80 - 0.04	4.00	0.50	0.40	8.6	S11-12P
Q2M-5	4.80 - 0.04	5.00	0.70	0.60	10.3	S11-18P
Q2M-6	5.70 - 0.04	6.00	0.80	0.70	11.7	S11-18P
Q2M-8	7.60 - 0.06	8.00	0.90	0.80	14.7	S11-25P
Q2M-10	9.60 - 0.11	10.00	1.10	1.00	17.0	S11-25P
Q2M-12	11.50 - 0.11	12.00	1.10	1.00	18.0	S11-25P



SOLD IN PACKAGES OF 10.

TYPE	MATERIALS
INTERNAL LUG DESIGN	SPRING STEEL



Retainer Ring Pliers. Order separately.

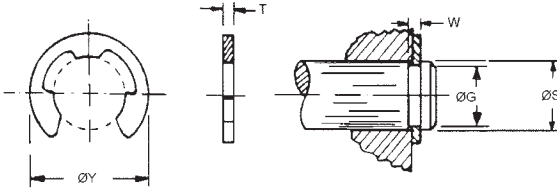
STOCK NO.	HOUSING BORE ØB	GROOVE DIA. ØG	RING THICKNESS T	PLIERS STOCK NO.	MAX. (ØC) CLEARANCE DIAMETER	GROOVE WIDTH W (MIN.)
Q4M-9	9.00	9.40 + 0.11	0.8	S13-37P	3.7	0.90
Q4M-10	10.00	10.40 + 0.11	1.0	S13-37P	3.3	1.10
Q4M-11	11.00	11.40 + 0.11	1.0	S13-37P	4.1	1.10
Q4M-13	13.00	13.60 + 0.11	1.0	S13-37P	5.4	1.10
Q4M-15	15.00	15.70 + 0.11	1.0	S13-37P	7.2	1.10
Q4M-16	16.00	16.80 + 0.11	1.0	S13-37P	8.0	1.10
Q4M-19	19.00	20.00 + 0.15	1.0	S13-37P	10.4	1.10
Q4M-22	22.00	23.00 + 0.15	1.0	S13-37P	13.2	1.10
Q4M-26	26.00	27.20 + 0.21	1.2	S13-37P	16.7	1.30



SOLD IN PACKAGES OF 10.

RETAINER RINGS

TYPE	MATERIALS
EXTERNAL SNAP ON DESIGN	SPRING STEEL



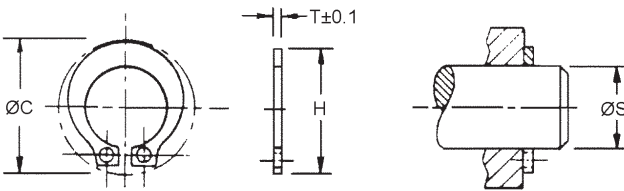
Retainer Ring Pliers. Order separately.

STOCK NO.	SHAFT SIZE $\varnothing S$	GROOVE $\varnothing G$ (h11)	GROOVE WIDTH W (MIN)	T RING THICKNESS MAX.	O.D. RING Y MAX.	APPLICATOR TOOL NO.
Q1M-2	2	1.2	0.34	0.32	3.3	S10-6T
Q1M-3	3	1.9	0.54	0.52	4.8	S10-9T
Q1M-4	4	2.3	0.64	0.62	6.3	S10-12T
Q1M-5	5	3.2	0.64	0.62	7.3	S10-18T
Q1M-6	6	4.0	0.74	0.72	9.3	S10-18T
Q1M-8	8	5.0	0.74	0.72	11.3	S10-25T
Q1M-10	10	7.0	0.94	0.92	14.3	S10-31T
Q1M-11	11	8.0	1.05	1.03	16.3	S10-50T
Q1M-12	12	8.0	1.05	1.03	16.3	S10-50T
Q1M-16	16	12.0	1.35	1.33	23.4	S10-62T
Q1M-19	19	15.0	1.55	1.53	29.4	S10-75T



SOLD IN PACKAGES OF 10.

TYPE	MATERIALS
EXTERNAL POWER GRIP DESIGN	SPRING STEEL



Retainer Ring Pliers. Order separately.

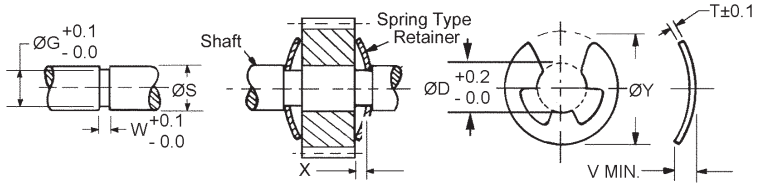
STOCK NO.	SHAFT SIZE $\varnothing S$	T RING THICKNESS	CLEARANCE $\varnothing C$	ASSEMBLY PLIER STOCK NO.
Q7M-2	2	0.6	6.4	S14-12P
Q7M-3	3	0.6	7.4	S14-12P
Q7M-4	4	0.6	9.1	S14-12P
Q7M-5	5	0.8	11.2	S14-25P
Q7M-6	6	1.0	12.7	S14-25P
Q7M-8	8	1.1	17.0	S14-37P
Q7M-10	10	1.2	19.3	S14-37P
Q7M-11	11	1.3	20.3	S14-87P
Q7M-14	14	1.5	25.1	S14-37P
Q7M-19	19	1.6	33.0	S14-37P



SOLD IN PACKAGES OF 10.

RETAINER RINGS

TYPE	MATERIALS
EXTERNAL BOWED SNAP ON DESIGN	SPRING STEEL

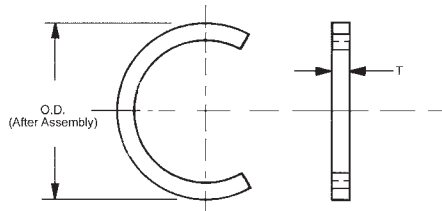


STOCK NO.	ØS SHAFT SIZE	FLAT ØY	T	V	X MAX. TAKE UP	FREE I.D. ØD	W	ØG
Q3M-3	3	5.8	0.3	0.6	0.3	2.3	0.6	2.4
Q3M-4	4	7.2	0.4	0.8	0.3	2.8	0.7	2.9
Q3M-8	8	12.7	0.6	1.3	0.6	6.1	1.2	6.3
Q3M-11	11	17.4	0.9	1.5	0.6	8.5	1.5	8.7
Q3M-16	16	23.9	1.1	2.0	0.9	12.1	2.0	12.3
Q3M-19	19	25.4	1.3	2.2	0.9	15.5	2.2	15.9
Q3M-25	25	38.1	1.3	2.2	0.9	20.8	2.2	21.2



Applicator tools are available on request.
Sold in packages of 10.

TYPE	MATERIALS
EXTERNAL DESIGN	CARBON STEEL PLATED



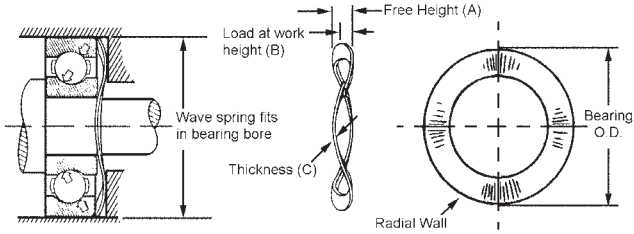
STOCK NO.	SHAFT SIZE	FREE O.D. (MAX.)	T	GROOVE DIMENSIONS	
				WIDTH (MIN.)	DIAMETER (MIN.)
Q5M-4	4	3.7	0.5	0.6	3.7
Q5M-8	8	7.4	0.8	0.9	7.5
Q5M-13	13	12.0	1.2	1.3	12.1
Q5M-16	16	15.0	1.4	1.6	15.2
Q5M-19	19	18.1	1.6	1.8	18.2
Q5M-23	23	21.8	1.2	1.3	22.0
Q5M-24	24	22.7	1.8	2.0	23.2
Q5M-32	32	130.2	1.5	1.6	30.5
Q5M-40	40	137.7	1.6	1.8	38.0
Q5M-45	45	142.7	1.6	1.8	43.0



Sold in packages of 10.

BEARING PRE-LOAD SPRINGS

TYPE	MATERIALS
FOR OUTER RACE BALL BEARIN PRE-LOAD	STAINLESS STEEL DIN 1.4300



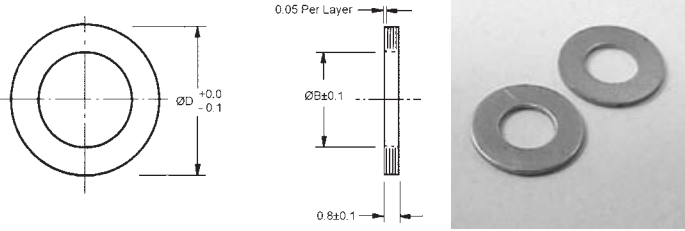
STOCK NO.	BEARING O.D. (Ref.)	A	B	C	FORCE TO DEFLECT TO B	RADIAL WALL
SVM-1	16	2.3	1.6	0.25	45N	1.98
SVM-2	19	3.0		0.25	50N	
SVM-3	22	2.8		0.30	60N	2.39
SVM-4	24	3.6		0.30	70N	

Sold in packages of 10.



SPACERS

TYPE	SHAFT SIZE	MATERIALS
INNER RACE SHIM	3 TO 10	BRASS

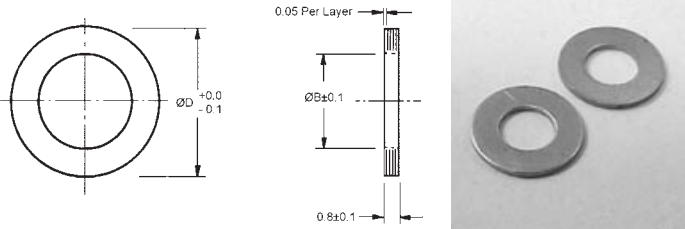


STOCK NO.	SHAFT SIZE	$\varnothing D$	$\varnothing B$
SS8-1M	3	5.9	3.2
SS8-2M	5	9.5	5.2
SS8-3M	6	12.7	6.2
SS8-4M	10	15.9	10.2

Sold in packages of 10.

The inner race spacer fits on shaft and pre-loads inner race of ball bearing.

TYPE	SHAFT SIZE	MATERIALS
OUTER RACE SHIM	8.0 TO 11.0	BRASS



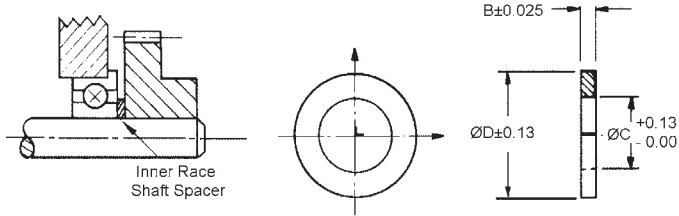
STOCK NO.	D	B
SS7-1M	10.0	7.9
SS7-2M	13.0	9.5
SS7-3M	16.0	11.1

Sold in packages of 10.

The outer race spacer fits in housing and pre-loads outer race of ball bearing.

SHAFT SPACERS

TYPE	SHAFT SIZE	MATERIALS
INNER RACE	3.00 TO 10.00	STAINLESS STEEL DIN 1.4310



STOCK NO.	SHAFT SIZE OR BEARING I.D.	ØC	ØD	B
SS1-117 SS1-118	3.00	3.05	3.73	0.10 0.15
SS1-101 SS1-102 SS1-103 SS1-104	4.00	4.05	5.30	0.10 0.15 0.25 0.40
SS1-121 SS1-122 SS1-123 SS1-124	5.00	5.05	5.93	0.10 0.15 0.25 0.40
SS1-105 SS1-106 SS1-107 SS1-108	6.00	6.05	7.90	0.10 0.15 0.25 0.40
SS1-109 SS1-110 SS1-111 SS1-112	8.00	8.05	10.20	0.10 0.15 0.25 0.40
SS1-113 SS1-114 SS1-115 SS1-116	10.00	10.05	12.30	0.10 0.15 0.25 0.40



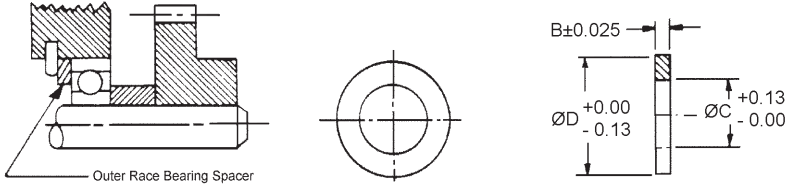
Sold in packages of 10.

Also available

STOCK NUMBER	DESCRIPTION
KIT-SS1M	STAINLESS STEEL SHAFT SPACERS, INNER RACE, 3mm THRU 10mm SHAFT SIZE (300 PIECES)

BEARING SPACERS

TYPE	SHAFT SIZE	MATERIALS
OUTER RACE	7.00 TO 19.00	STAINLESS STEEL DIN 1.4300



STOCK NO.	BEARING OUTSIDE DIA. (ØD)	ØC	B
SS3-113 SS3-114	7.00	6.25	0.15 0.25
SS3-115 SS3-116	8.00	6.75	0.15 0.25
SS3-101 SS3-102 SS3-103	9.00	7.85	0.15 0.25 0.40
SS3-117 SS3-118	10.00	8.25	0.15 0.25
SS3-119 SS3-120	11.00	10.00	0.15 0.25
SS3-104 SS3-105 SS3-106	13.00	11.15	0.15 0.25 0.40
SS3-121 SS3-122	15.00	13.00	0.15 0.25
SS3-107 SS3-108 SS3-109	16.00	13.85	0.15 0.25 0.40
SS3-110 SS3-111 SS3-112	19.00	16.65	0.15 0.25 0.40

BALLS

TYPE	DIAMETER	MATERIALS
HARDENED STEEL	2 TO 11	STAINLESS STEEL DIN 1.4112 OR CHROME STEEL DIN 1.3505



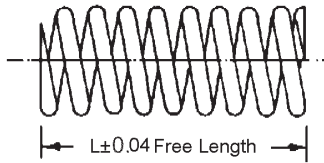
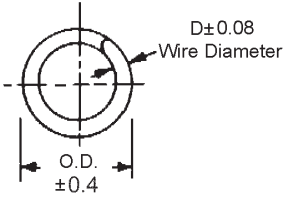
ØD	STAINLESS STEEL DIN 1.4112	CHROME STEEL DIN 1.3505
	±.0012 HARDNESS C55-60	±.0006 HARDNESS C60-67
	STOCK NUMBER	STOCK NUMBER
2	PT4M-2	PT5M-2
3	PT4M-3	PT5M-3
4	PT4M-4	PT5M-4
5	PT4M-5	PT5M-5
6	PT4M-6	PT5M-6
7	PT4M-7	PT5M-7
8	PT4M-8	PT5M-8
9	PT4M-9	PT5M-9
10	PT4M-10	PT5M-10
11	PT4M-11	PT5M-11

Sold in packages of 10.

F

SPRINGS

TYPE	STYLE	MATERIALS
COMPRESSION	RIGHT HAND - OPEN WOUND ENDS SQUARED	STAINLESS STEEL DIN 1.4305



STOCK NO.	ØO.D.	ØD	L	COILS	K ±10%	
SPR1-1	1.45	0.18	9.5	18	276.5	
SPR9-1		0.20	6.3	13	771.7	
SPR9-2		0.20	12.7	24	364.0	
SPR9-3	2.24	0.25	6.3	9	728.0	
SPR1-2		0.25	12.7	17	334.3	
SPR9-5		0.30	9.5	14	946.7	
SPR9-6		0.30	19.0	24	465.5	
SPR9-7	3.05	0.41	6.3	7	2549.7	
SPR9-8		0.41	12.7	13	1209.2	
SPR9-9		0.46	9.5	10	2609.2	
SPR1-3		0.46	15.9	16	1543.5	
SPR9-10		0.46	19.0	19	1239.0	
SPR9-11		0.51	9.5	11	4037.2	
SPR9-12		0.51	19.0	20	1923.2	
SPR9-13		0.56	12.7	14	4532.5	
SPR9-14		0.56	25.4	27	2142.0	
SPR9-15		4.57	0.46	12.7	8	976.5
SPR9-16			0.46	25.4	14	465.5
SPR9-17			0.51	12.7	8	1414.0
SPR9-18			0.51	25.7	15	670.2
SPR1-4			0.56	12.7	8	2068.5
SPR9-20	0.56		25.4	16	946.7	
SPR9-21	0.61		12.7	9	2754.5	
SPR9-22	0.56		25.4	17	1610.7	
SPR9-23	0.66		12.7	9	3906.7	
SPR9-24	0.66		25.4	17	1778.0	
SPR9-25	0.74		19.0	14	3760.7	
SPR9-26	0.74		38.1	26	1806.0	
SPR9-27	0.81		19.0	14	6020.0	
SPR9-28	0.81		38.1	27	2740.5	
SPR9-29	6.10	0.66	12.7	6	3045.0	
SPR1-5		0.66	15.9	8	1849.7	
SPR9-30		0.66	25.4	12	1078.0	
SPR9-31		0.89	12.7	8	7070.0	
SPR9-32		0.89	25.4	14	3263.7	
SPR9-33		0.97	19.0	10	6720.0	
SPR9-34		0.97	38.1	20	3118.5	
SPR9-35		1.02	25.4	14	5684.0	
SPR9-36		1.02	50.8	27	2724.7	
SPR1-6	7.62	0.81	15.9	6	903.0	
SPR1-7	9.14	1.07	22.2	8	3717.0	
SPR1-8	10.67	1.14	25.4	7	2915.5	
SPR1-9	12.19	1.40	31.7	8	3935.7	
SPR1-10	15.24	1.60	38.1	8	3498.2	
SPR1-11	18.29	1.83	50.8	9	2915.5	

K = Average Spring Rate N/m.

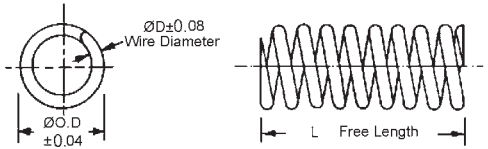
Specials on request.

Sold in packages of 10.

SPRINGS

TYPE	LENGTHS	MATERIALS
COMPRESSION	38 TO 63	STAINLESS STEEL DIN 1.4305

STOCK NO.	ØO.D.	ØD	L	APPROX. NO. COILS
SPR7-1	2.36	0.41	38.1	32
SPR7-2	3.18	0.46	50.8	37
SPR7-7	3.56	0.41	25.4	17
SPR7-8	4.37	0.46	31.7	19
SPR7-3	4.75	0.58	63.5	37
SPR7-4	6.35	0.64	76.2	29
SPR7-9	6.35	0.58	38.1	22
SPR7-10	8.33	0.64	44.4	19
SPR7-11	9.91	0.81	50.8	16
SPR7-12	11.89	1.02	57.1	12
SPR7-13	15.47	1.19	63.5	15

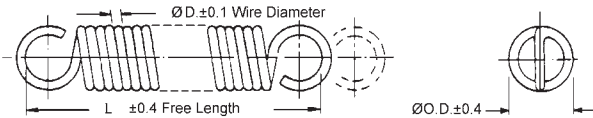


- Cut your own length
- Ends can be ground or looped

Special springs available on request (send drawing).

Sold in packages of 10.

TYPE	LENGTHS	MATERIALS
EXTENSION - FULL TWIST LOOPS CLOSE WOUND	6 TO 127	SPRING TEMPERED STAINLESS STEEL

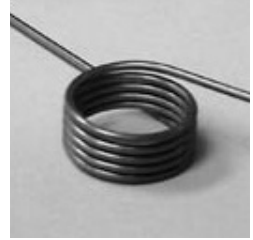
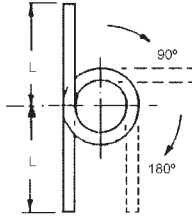
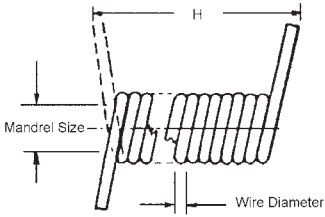


K = Spring rate in N/m
Sold in packages of 10.

STOCK NO.	ØO.D.	ØD	L	K ±10%
SPR10-1	1.6	0.2	6.4	297
SPR2-1		0.2	9.5	157
SPR10-2		0.2	12.7	105
SPR10-3	2.4	0.3	9.5	175
SPR2-2		0.3	12.7	297
SPR10-4		0.3	19.1	52
SPR2-3	3.1	0.5	25.4	472
SPR10-5	3.1	0.4	19.1	437
SPR10-6		0.4	31.8	192
SPR10-7		0.5	19.1	1207
SPR10-8		0.5	31.8	647
SPR2-4		4.6	0.7	31.8
SPR10-9	4.6	0.6	19.1	630
SPR10-10		0.6	31.8	297
SPR10-11		0.7	19.1	1540
SPR10-13		0.8	19.1	3953
SPR10-4		0.8	31.8	1907
SPR2-5	6.1	0.8	31.8	612
SPR10-15	6.1	0.7	19.1	822
SPR10-16		0.7	31.8	297
SPR10-17		0.7	19.1	1435
SPR10-18		0.7	31.8	560
SPR10-19		0.8	19.1	2012
SPR10-20		0.8	31.8	770
SPR10-21		0.9	19.1	3220
SPR10-22		0.9	31.8	1295
SPR2-6	9.1	1.4	50.8	2660
SPR10-27	9.1	0.8	25.4	472
SPR10-28		0.8	31.8	210
SPR10-29		0.9	25.4	1155
SPR10-30		0.9	38.1	490
SPR10-31		1.1	31.8	1977
SPR10-32		1.1	50.8	910
SPR10-33		1.4	31.8	5635
SPR10-35	12.7	0.9	31.8	402
SPR10-36		0.9	50.8	140
SPR2-7		1.4	63.5	735
SPR2-8	16.5	1.4	76.2	280
SPR2-9	19.1	1.6	101.6	245
SPR2-10	21.6	1.9	38.1	367
SPR2-11	25.4	1.9	127.0	210

SPRINGS

TYPE	LENGTHS	MATERIALS
TORSION LEFT HAND WOUND	12 TO 50	STAINLESS STEEL



STOCK NUMBER	WIRE DIA.	OUTSIDE DIA.	L	MANDREL SIZE (MAX.)	H	TORQUE N*cm @ 180°
SPR3-1	0.3	4.2	12.7	2.8	1.5	0.5
SPR3-2	0.4	4.7	19.1	2.8	1.9	1.1
SPR3-3	0.5	5.5	19.1	3.6	2.8	1.6
SPR3-4	0.5	6.3	25.4	4.0	3.2	2.5
SPR3-5	0.6	7.7	25.4	5.2	3.8	4.2
SPR3-6	0.8	10.0	25.4	6.3	4.6	7.1
SPR3-7	0.9	11.4	31.8	7.1	3.1	11.3
SPR3-8	1.0	13.2	50.8	8.7	6.2	15.5
SPR3-9	1.2	15.6	50.8	10.3	7.4	28.3

Special springs on request, send sketch.

Right hand wound on request.

Sold in packages of 10.